

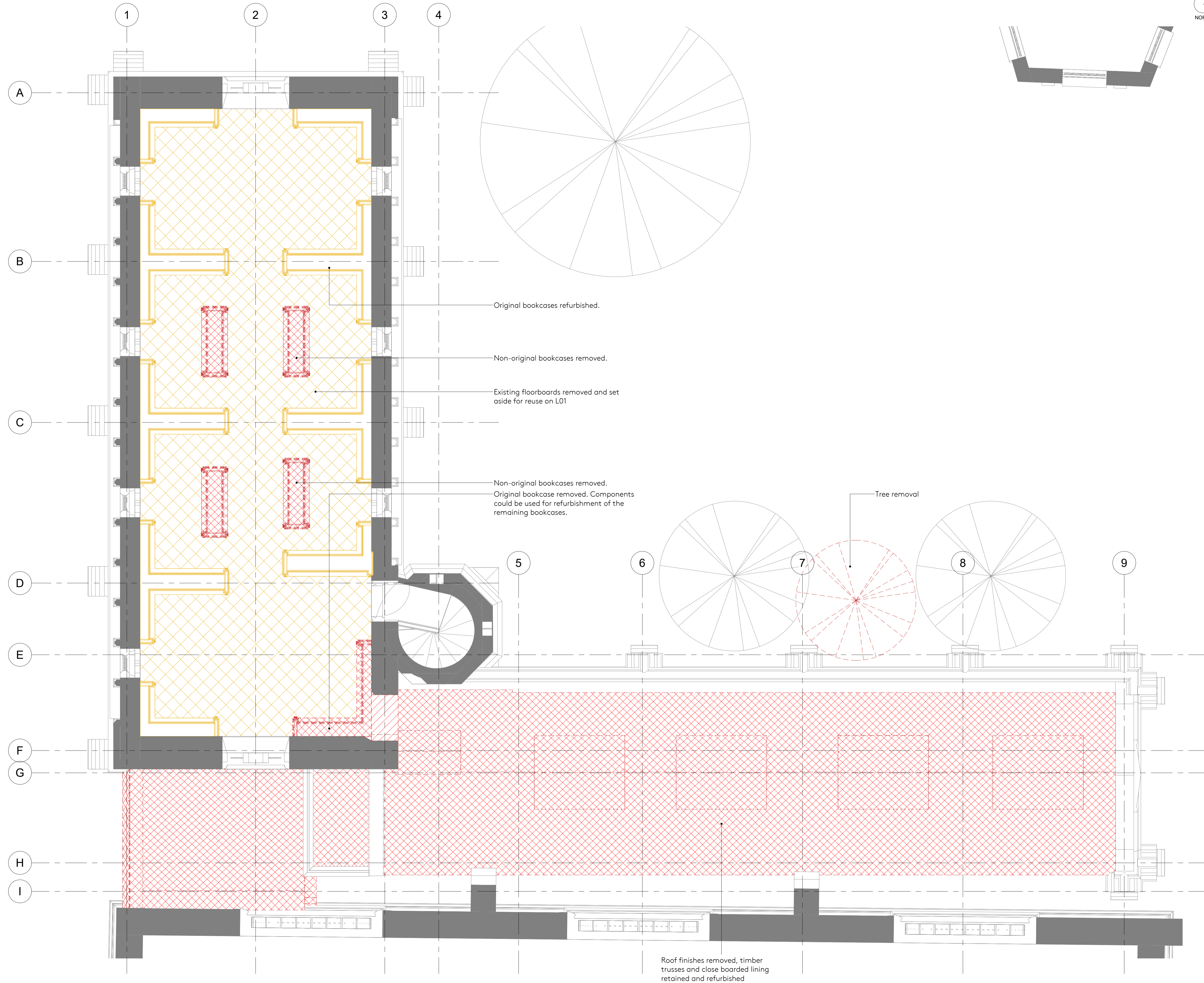


GENERAL NOTES

DIMENSIONED DRAWINGS ONLY. DO NOT SCALE.  
ALL DIMENSIONS TO BE CHECKED PRIOR TO COMMENCEMENT OF ANY WORKS, AND / OR PREPARATION OF ANY SHOP DRAWINGS.  
ALL DISCREPANCIES TO BE REPORTED TO THE ARCHITECT.  
THIS DRAWING TO BE READ IN CONJUNCTION WITH ALL OTHER ARCHITECTS DRAWINGS AND SPECIFICATIONS AND OTHER CONSULTANTS INFORMATION.  
ALL STRUCTURAL ELEMENTS TO BE CROSS CHECKED WITH ENGINEERS DOCUMENTS

NOTES

-  Removed
-  Refurbished



Original bookcases refurbished.

Non-original bookcases removed.

Existing floorboards removed and set aside for reuse on L01

Non-original bookcases removed.  
Original bookcase removed. Components could be used for refurbishment of the remaining bookcases.

Tree removal

Roof finishes removed, timber trusses and close boarded lining retained and refurbished

REVISION SCHEDULE

REVISION	DATE	DESCRIPTION	ISSUED BY
P1	29/01/21	Planning Application	AA

**Nex** —  
90-93 Cowcross St, Clerkenwell,  
London EC1M 6BF  
e: office@nex-architecture.com  
t: +44 20 7183 0900

— Exeter College Oxford  
Turf Street, Oxford, OX1 3DP

PROJECT:  
Exeter College - The Library Renewed

DRAWING:  
Plan - First - DEMOLITION

STATUS: <b>Planning</b>	DATE: 29/01/21	DRAWN: AA	CHECKED: JF
SCALE: As indicated @ A1	DRAWING NO: 098-Nex-PP-	REVISION: 2703	P1