

NEW 600x600 ACCESS CHAMBER FOR PULLING NEW ELECTRICAL MAIN SERVING BUILDING. THE NEW MAIN IS ALREADY IN PLACE, COILED UP IN THE CHAMBER MARKED "REDUNDANT" - IT IS TO BE BROUGHT BACK TO THIS NEW CHAMBER, AND JOINTED

POWER FOR BOOK ALARM SYSTEM

ELECTRICAL DUCT CARRYING NEW MAIN RUNS IN THE GROUND IN A NEW TRENCH, 800MM DEEP

DETECTORS ON UNDERSIDE OF JOIST MOULDINGS

POWER FOR BOOK ALARM SYSTEM, FAP AND REFUGE

DISABLED REFUGE EMERGENCY VOICE COMMUNICATION (ECV) MASTER CONTROLLER - 4 LINE WITH HANDSET IN RECESSED GLASS FRONTED STAINLESS STEEL ENCLOSURE (APPROX Measures 725 W x 448 H x 193 D mm deep.)

REPLACE EXISTING CAMERA

NEW 600x600 ACCESS CHAMBER WITH CAST IRON COVER, FOR PULLING MAINS ELECTRICAL CABLE

FCUS FOR: - SENSOR TAP - WC ALARM - EXTRACT FAN

ELECTRICAL DUCT CARRYING NEW MAIN ENTERS THE BUILDING VIA THE REVISED THRESHOLD AND RUNS CAST IN UNDER THE FLOOR

FCU FOR POWERED DOOR

ACCESSIBLE WC ALARM PULL-CORD AND RESET BUTTON, LINKED TO AUDIBLE AND VISUAL ALARM OVER DOOR (AS HARK+ STAINLESS)

RIGID DUCTING RUNS UNDER THE STAIR AND CABLES PASS THROUGH NEW CORE PENETRATIONS IN WALL TO SERVE L/L GROUND FLOOR MAIN LIBRARY VIA FLOOR VOID. THE SAME AT HIGH LEVEL IN CORRIDOR CEILING VOID TO SERVE H/L GROUND FLOOR AND L/L FIRST FLOOR OF THE MAIN LIBRARY VIA NEW PENETRATIONS IN THE WALL

BELOW GROUND DUCT FOR ELECTRICAL MAIN RISES IN PLANTROOM - NEW INTAKE IN THIS POSITION

WALL MOUNTED 12U RACK FOR DATA - ALL DATA CABLING TO BE TERMINATED HERE

SPACE AND FCUS FOR LIGHTING CONTROL TO LINK BLOCK AND MAIN LIBRARY (APPROX. 800X1000X200MM WXHXD)

TRUNKING DROPS INTO SCREED TO TRAVERSE THRESHOLD. ACCESS TO BE PROVIDED IN THE BOOKCASES (150X150) AS SHOWN

FCU FOR OFFICE EXTRACT FAN

3-COMPARTMENT TRUNKING RUNNING UNDER BOOKCASES

2-COMPARTMENT TRUNKING CAST INTO SCREED

SPACE FOR LIGHTING CONTROL TO ANNEXE (APPROX. 800X1000X200MM WXHXD)

REDUNDANT

LIGHTING BY OTHERS - REFER TO LIGHTING CONSULTANTS' INFORMATION

CABLES TO BOOKCASE LIGHTS, DATA POINTS ETC. TO RISE IN HOLLOW CORNERS OF BOOKCASES

CABLES TO LOW LEVEL POWER ETC. IN MAIN LIBRARY DISTRIBUTE VIA FLOOR VOID, IN BASKET/TRUNKING FIXED TO THE UNDERSIDE OF THE JOISTS

HIGH LEVEL DATA POINTS ON THE TOP OF BOOKCASES FOR: - WIRELESS ACCESS POINTS - OCCUPANCY SENSING RECEIVER

CABLING TO LIGHTING IN NEW MICC IN TURRET

DISABLED REFUGE EMERGENCY VOICE COMMUNICATION (ECV) REFUGE OUTSTATION (APPROX 160 W x 240 H x 53 D mm. Designed for surface mounting only. Stainless Steel)

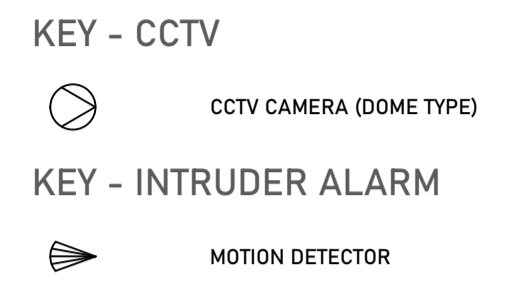
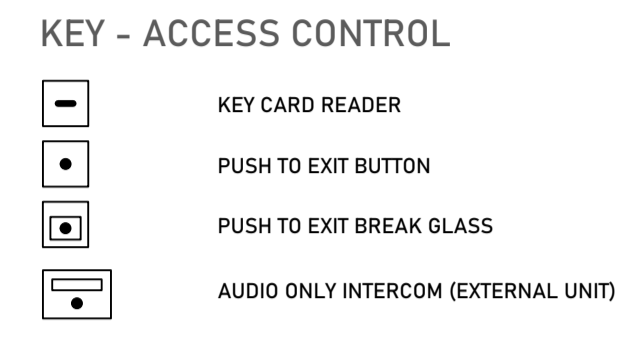
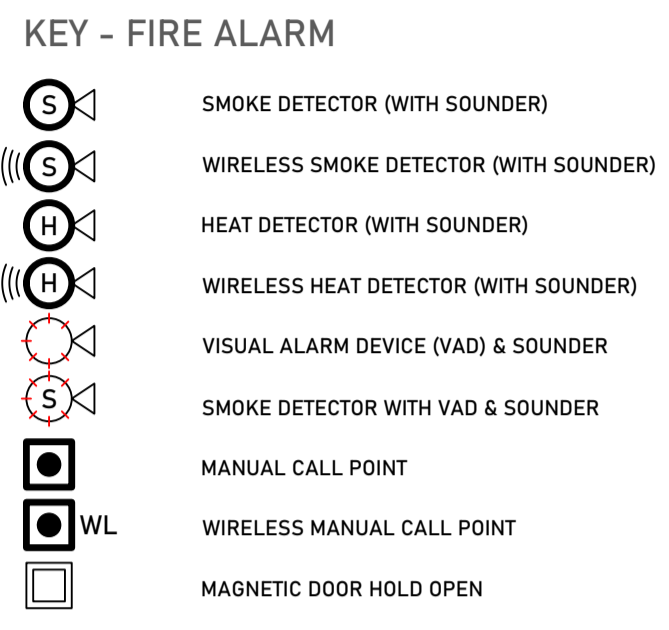
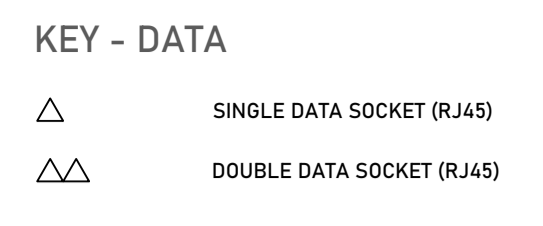
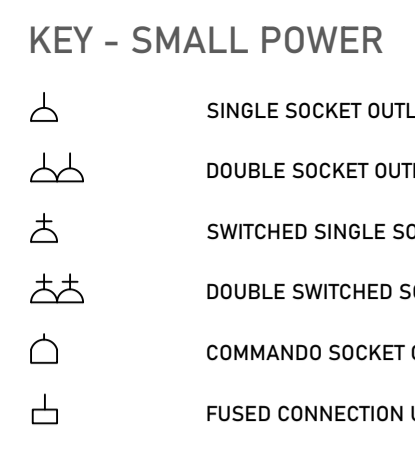
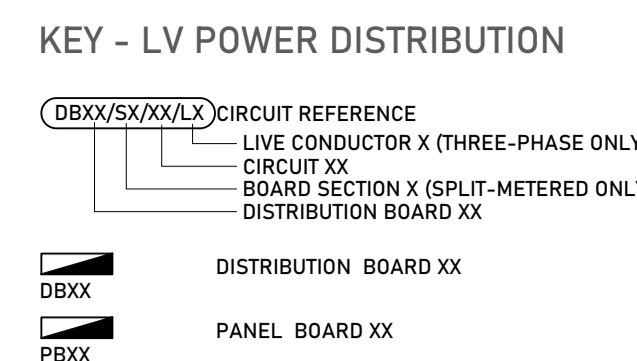
3-COMPARTMENT TRUNKING CAST INTO NEW SCREED, INSPECTION HATCH (FLOOR BOX 150MM SQUARE) AT CHANGE OF DIRECTION

3-COMPARTMENT TRUNKING UNDER NEW BOOKCASES

DATA POINTS ON TOP OF BOOKCASE FOR: - WIRELESS ACCESS POINTS - OCCUPANCY SENSING RECEIVERS

DETECTOR UNDER STAIR

NEW CAMERA



EMERGENCY EXIT SIGNAGE

REF	MAKE	MODEL	MANUFACTURERS REF. / CODE	MOUNTING	ARROW DIRECTION	FINISH	NOTES/ACCESSORIES
L-EX-1	VIABIZZUNO	TRASPARENZE	VARIES	VARIES	VARIES - REFER TO ARCHITECTS SPECIFICATION	TBC	ALL FIXINGS

- NOTES**
- DO NOT SCALE
 - TO BE READ IN CONJUNCTION WITH ALL OTHER LAURENCE OWEN LTD AND DESIGN TEAM PROJECT DOCUMENTS ISSUED
 - FINAL SETTING OUT BY ARCHITECT
 - IF IN DOUBT ASK
 - DESIGN OF FIRE ALARM SYSTEM BY SPECIALIST INSTALLER - EQUIPMENT SHOWN INDICATIVE ONLY
 - WHERE EMERGENCY LIGHTS OR EMERGENCY ESCAPE SIGNS ARE PRESENT, CIRCUITS MUST BE RUN WITH AN UNSWITCHED LIVE IN ADDITION TO THE SWITCHED LIVE, LIKEWISE PHASE-PULSE CONTROLLED LIGHTS

EMERGENCY EXIT SIGNAGE SHOWN INDICATIVELY FOR MEP COORDINATION AND DESIGN REFER TO ARCHITECTS INFORMATION FOR SETTING OUT, MOUNTING AND ARROW DIRECTION ETC.

ABBREVIATIONS

H/L, L/L HIGH LEVEL, LOW LEVEL
 F/A, F/B FROM ABOVE, FROM BELOW
 T/A, T/B TO ABOVE, TO BELOW
 FA/TB FROM ABOVE TO BELOW
 FB/TA FROM BELOW TO ABOVE

REV. DATE ISSUE

P1	2020-11-09	STAGE 3 FOR COSTING
P2	2020-11-15	STAGE 3
.	.	.
.	.	.
.	.	.
.	.	.
.	.	.
.	.	.

FOR INFORMATION

CLIENT
EXETER COLLEGE, OXFORD

ARCHITECT
NEX ARCHITECTURE

PROJECT NAME
THE LIBRARY RENEWED

DRAWING TITLE
COMBINED ELECTRICAL LAYOUT GROUND FLOOR

PROJECT	DRAWING NAME	REV	FIRST DRAWN	SCALE AT A1
P111	V[90]100	P2	2020-11	1:50

Building Services Engineering & Environmental Design
LAURENCE OWEN

Laurence Owen Ltd is a private limited company registered in England and Wales, No. 11308905
 Registered Office: C/O Rayner Essex LLP, Tavistock House South, Tavistock Square, London, WC9H 9LG
 © Copyright 2019 Laurence Owen Ltd