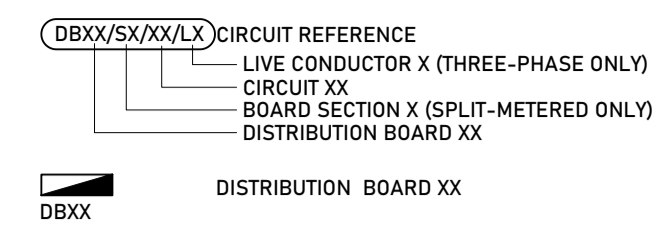
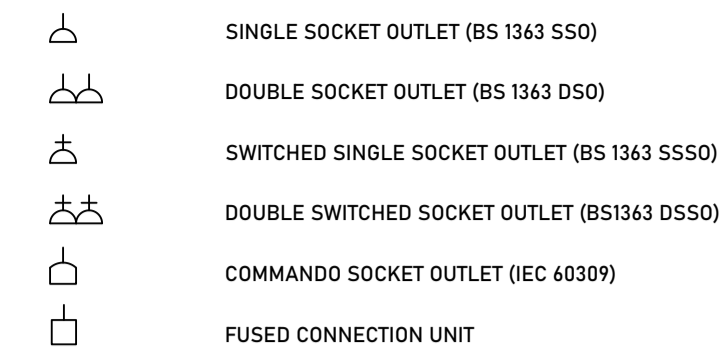


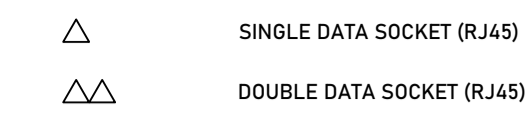
KEY - LV POWER DISTRIBUTION



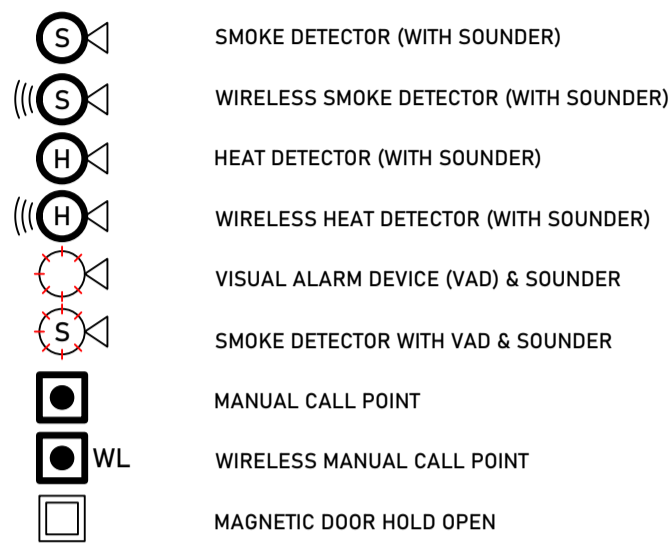
KEY - SMALL POWER



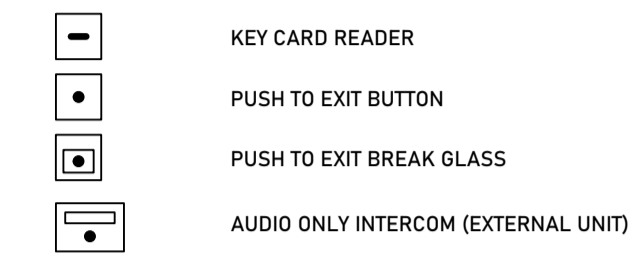
KEY - DATA



KEY - FIRE ALARM



KEY - ACCESS CONTROL



KEY - CCTV



KEY - INTRUDER ALARM



NOTES

- DO NOT SCALE
- TO BE READ IN CONJUNCTION WITH ALL OTHER LAURENCE OWEN LTD AND DESIGN TEAM PROJECT DOCUMENTS ISSUED
- FINAL SETTING OUT BY ARCHITECT
- IF IN DOUBT ASK
- DESIGN OF FIRE ALARM SYSTEM BY SPECIALIST INSTALLER - EQUIPMENT SHOWN INDICATIVE ONLY
- WHERE EMERGENCY LIGHTS OR EMERGENCY ESCAPE SIGNS ARE PRESENT, CIRCUITS MUST BE RUN WITH AN UNSWITCHED LIVE IN ADDITION TO THE SWITCHED LIVE, LIKEWISE PHASE-PULSE CONTROLLED LIGHTS

EMERGENCY EXIT SIGNAGE SHOWN INDICATIVELY FOR MEP COORDINATION AND DESIGN REFER TO ARCHITECT'S INFORMATION FOR SETTING OUT, MOUNTING AND ARROW DIRECTION ETC.

ABBREVIATIONS

- H/L, L/L HIGH LEVEL, LOW LEVEL  
 F/A, F/B FROM ABOVE, FROM BELOW  
 T/A, T/B TO ABOVE, TO BELOW  
 FA/TB FROM ABOVE TO BELOW  
 FB/TA FROM BELOW TO ABOVE

REV.	DATE	ISSUE
P1	2020-11-09	STAGE 3 FOR COSTING
P2	2020-11-15	STAGE 3
.	.	.
.	.	.
.	.	.
.	.	.
.	.	.
.	.	.

FOR INFORMATION

CLIENT  
**EXETER COLLEGE, OXFORD**

ARCHITECT  
**NEX ARCHITECTURE**

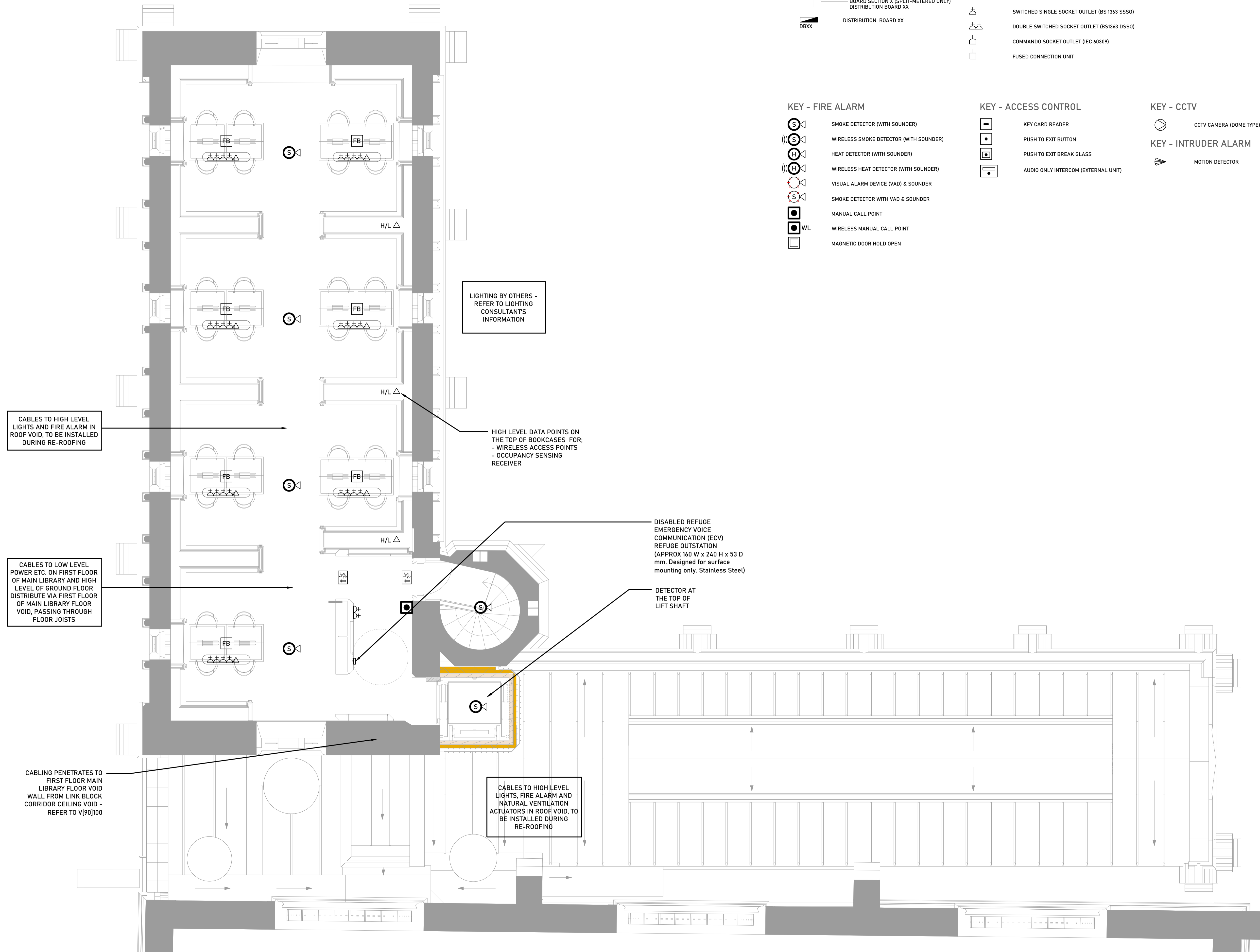
PROJECT NAME  
**THE LIBRARY RENEWED**

DRAWING TITLE  
**COMBINED ELECTRICAL LAYOUT  
 MEZZANINE**

PROJECT DRAWING NAME REV FIRST DRAWN SCALE AT A1  
**P111 V[90]102 P2 2020-11 1:50**

Building Services Engineering & Environmental Design  
**LAURENCE OWEN**

Laurence Owen Ltd is a private limited company registered in England and Wales, No. 11308905  
 Registered Office: C/O Rayner Essex LLP, Tavistock House South, Tavistock Square, London, WC0H 7PL  
 © Copyright 2019 Laurence Owen Ltd



CABLES TO HIGH LEVEL LIGHTS AND FIRE ALARM IN ROOF VOID, TO BE INSTALLED DURING RE-ROOFING

CABLES TO LOW LEVEL POWER ETC. ON FIRST FLOOR OF MAIN LIBRARY AND HIGH LEVEL OF GROUND FLOOR DISTRIBUTE VIA FIRST FLOOR OF MAIN LIBRARY FLOOR VOID, PASSING THROUGH FLOOR JOISTS

LIGHTING BY OTHERS - REFER TO LIGHTING CONSULTANT'S INFORMATION

HIGH LEVEL DATA POINTS ON THE TOP OF BOOKCASES FOR:  
 - WIRELESS ACCESS POINTS  
 - OCCUPANCY SENSING RECEIVER

DISABLED REFUGE EMERGENCY VOICE COMMUNICATION (ECV) REFUGE OUTSTATION (APPROX 160 W x 240 H x 53 D mm. Designed for surface mounting only. Stainless Steel)

DETECTOR AT THE TOP OF LIFT SHAFT

CABLES TO HIGH LEVEL LIGHTS, FIRE ALARM AND NATURAL VENTILATION ACTUATORS IN ROOF VOID, TO BE INSTALLED DURING RE-ROOFING

CABLING PENETRATES TO FIRST FLOOR MAIN LIBRARY FLOOR VOID WALL FROM LINK BLOCK CORRIDOR CEILING VOID - REFER TO V[90]100