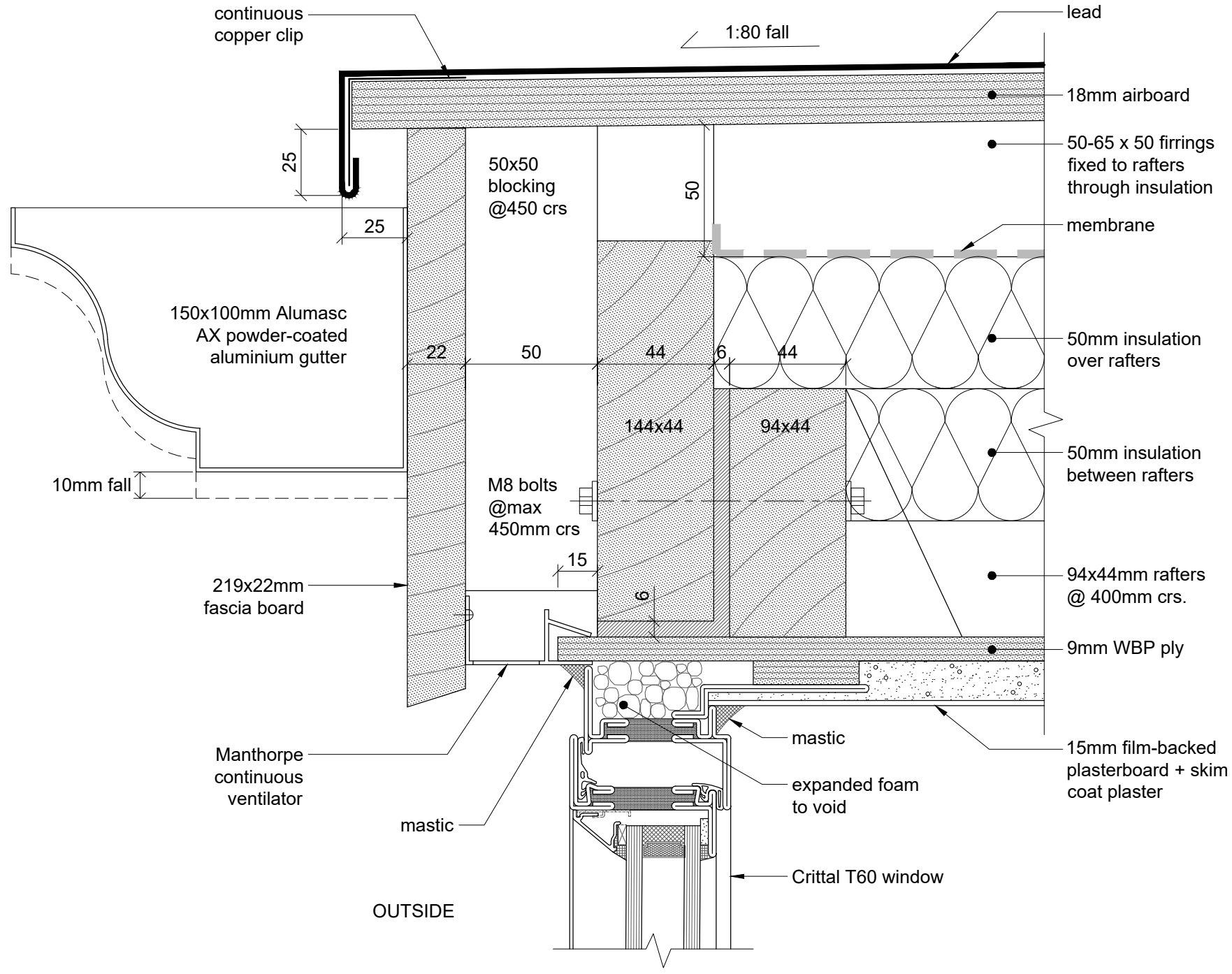


NOTES:

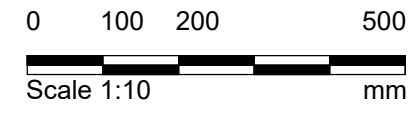
- Notes
- Any dwg format drawing is to be read in conjunction with and at the scale of the accompanying pdf.
 - Where colours other than black or grey are used, the drawing must be plotted in colour.
 - For status 'C' (Construction) drawings all dimensions are to be checked on site by the contractor, scaling is for Local Authority purposes only.
 - Unless otherwise indicated, all dimensions are in millimeters.
 - All information on this drawing is to be read in conjunction with the relevant Donald Insall Associates specification and trade contractors' drawings and information by specialists.
 - In the event of any discrepancy, please contact us immediately.
 - This drawing may contain survey information by others and is to be used solely for the purposes for which it was issued.
 - These are uncontrolled documents issued for information purposes only. If you have any queries regarding the drawings, please contact DIA immediately.
 - Please note DIA cannot be held responsible for any errors arising from changes made to an uncontrolled dwg file.

© 2019 DONALD INSALL ASSOCIATES LTD

| Drawing Status | | |
|-----------------|----------------------|----------------|
| F Feasibility | B Building Control | T Tender |
| S Sketch Design | D Design Development | C Construction |
| P Planning | M Measurement | R Record |



1 Eaves Detail
3301 1:2



| 0 | XX-XX-XX | SXD | LSB | Initial Issue |
|-----|----------|-----|------|---------------|
| Rev | Date | Dwn | Auth | Revision |

Exeter College Library
Oxford

Roof Details
Annexe Rooflight, Eaves Detail

| | | | |
|------------|---------|----------|------|
| Project | EXCO.01 | No | 3301 |
| Scale (A3) | 1:2 | Status | P |
| | | Revision | 0 |

Donald Insall Associates
Chartered Architects and Historic Building Consultants

2 Queen's Parade, Bath BA1 2NJ
(+44) 01225 469 898
bath@insall-architects.co.uk