

GENERAL NOTES

DIMENSIONED DRAWINGS ONLY. DO NOT SCALE.
 ALL DIMENSIONS TO BE CHECKED PRIOR TO COMMENCEMENT OF ANY WORKS, AND / OR PREPARATION OF ANY SHOP DRAWINGS.
 ALL DISCREPANCIES TO BE REPORTED TO THE ARCHITECT.
 THIS DRAWING TO BE READ IN CONJUNCTION WITH ALL OTHER ARCHITECTS DRAWINGS AND SPECIFICATIONS AND OTHER CONSULTANTS INFORMATION.
 ALL STRUCTURAL ELEMENTS TO BE CROSS CHECKED WITH ENGINEERS DOCUMENTS.

NOTES

Stage-3 Indicative Spec Notes	
Key Value	Indicative Specification
E10/106	Insulated Limecrete Floor System to Structural Engineer's Spec. Nominally 150 compacted fill, geotextile, 150 Glapor foamed glass insulation (to achieve U=0.2), geotextile, 150 Limecrete slab with recycled aggregate, 75 limecrete screed with UFH
G20/200	New load-bearing timber stud wall to SE spec. Nom 75x63 C24 studs @ 400c/c w/ 12thk OSB3 sheathing board to one face. Vapour barrier to library side, mineral wool insulation, breather membrane to Bodleian side. Ventilated cavity to Bodleian side vented upwards via ventilated roof deck.
H71/111	Rolled Lead roofing on warm roof deck with ventilated cavity to Insall spec
H71/131	Rolled Lead cladding over ventilated cavity to Insall spec
L10/461	Glazing Vision Walk-On Circular Rooflight on insulated upstand
L10/560	Steel Framed Glass Pivot door and screen with bespoke oak handle and floor sprung operation
M40/105	Bidwell Clipsham Limestone Interior Flooring. Honed finish nom. 40mm tk
N10/220	Purpose Made Oak Veneered Ply Lockers built into wall lining

REVISION SCHEDULE

REVISION	DATE	DESCRIPTION	ISSUED BY
P1	29/01/21	Planning Application	AA

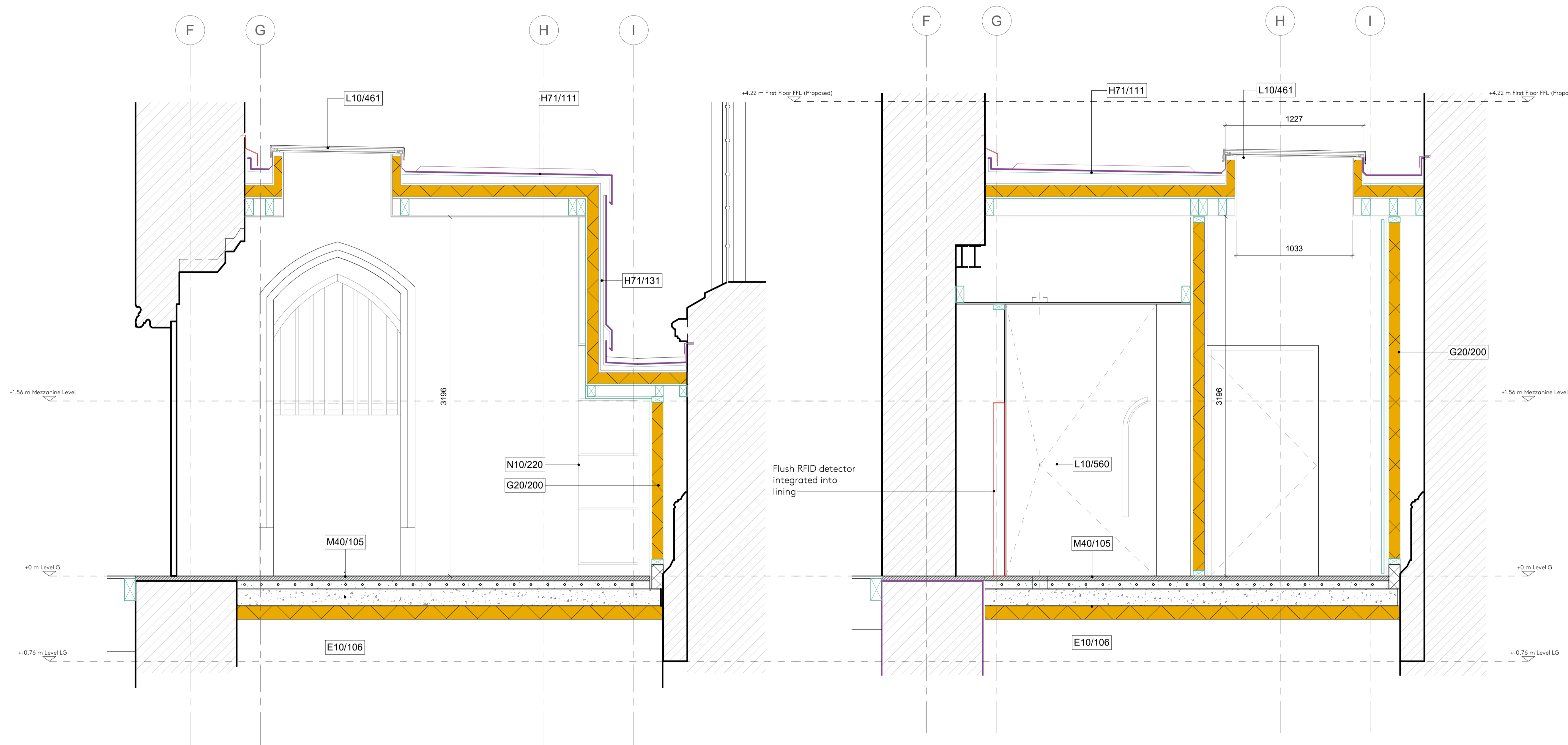
Nex —
 90-93 Cowcross St, Clerkenwell,
 London EC1M 6BF
 e: office@nex-architecture.com
 t: +44 20 7183 0900

— **Exeter College Oxford**
 Turf Street, Oxford, OX1 3DP

PROJECT:
 Exeter College - The Library Renewed

DRAWING:
 Link Cross Section EE at Lockers

STATUS:	DATE:	DRAWN:	CHECKED:
Planning	29/01/21	JF	JF
SCALE:	DRAWING NO:	REVISION:	
1 : 20 @ A1	098-Nex-PP-	3154	P1



1 Detail Section EE - Link Lockers
 1 : 20

2 Detail Section FF - WC
 1 : 20

