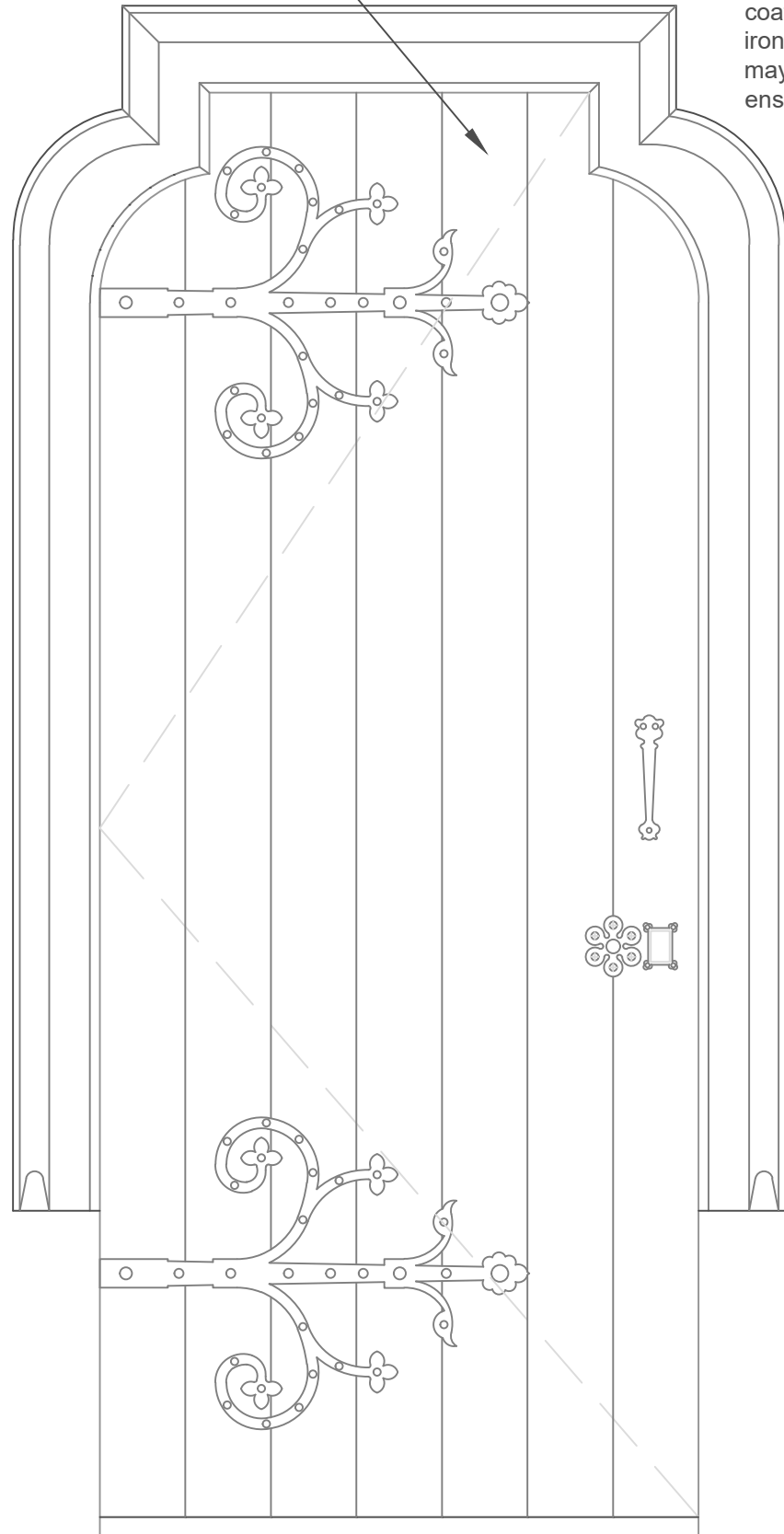
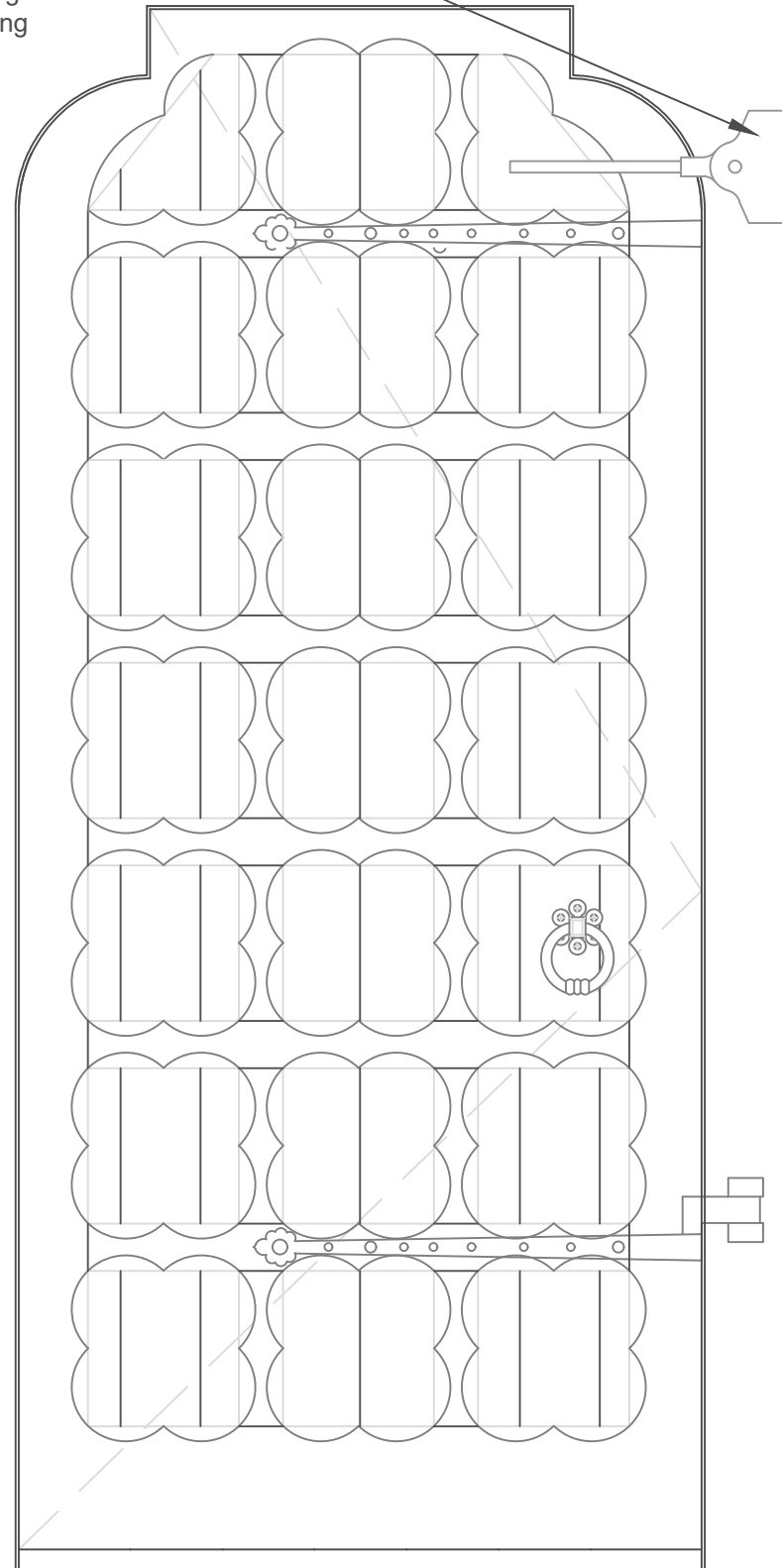


Door requires upgrading for fire. Allow for Envirograf Product 42 HW clear coating system, one coat HWAP primer, two coats HW02/N and one top coat of HW Excel



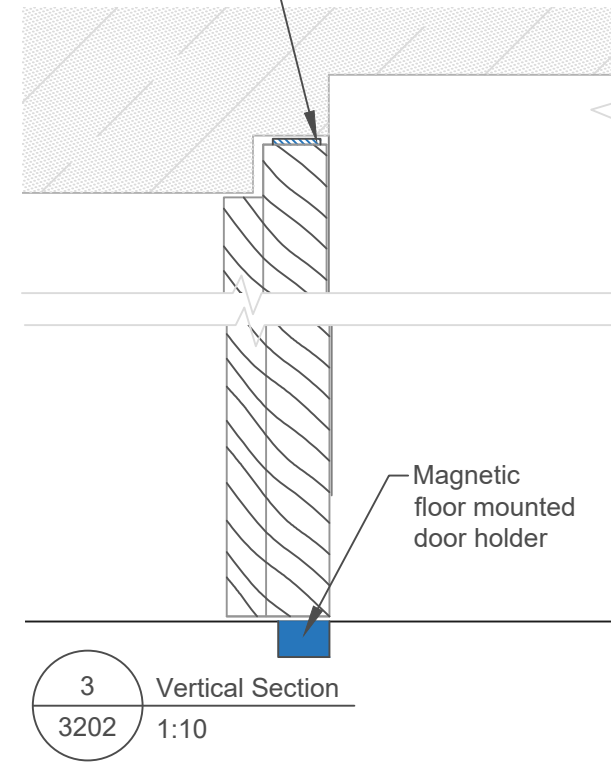
1 Elevation to Main Library
3202 1:10

Automatic closer will be required, linked to magnetic floor mounted door holder. Provisionally allow for D&E Tirez 2 Gate Closer, powder coated to match ironmongery. Single panel may require infilling to ensure a flush fixing



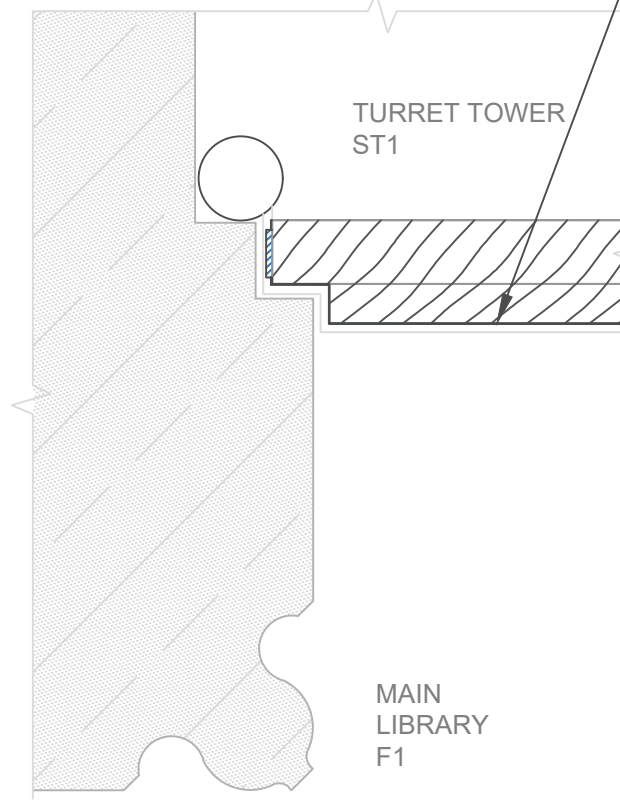
2 Elevation to Stair Turret
3202 1:10

Surface mounted Envirograf Product 69 fire/smoke seals to be fixed to door edges.

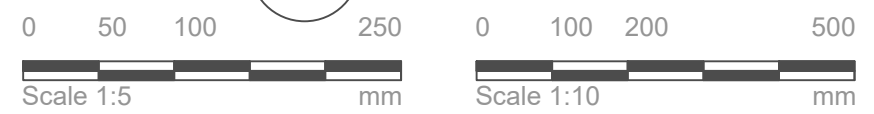


3 Vertical Section
3202 1:10

Existing lock and handles will require Envirograf Product 71 flexible intumescent sheet installed around/to rear of existing ironmongery and latch.



4 Plan Detail
3202 1:10



- Notes
- Any dwg format drawing is to be read in conjunction with and at the scale of the accompanying pdf.
 - Where colours other than black or grey are used, the drawing must be plotted in colour.
 - For status 'C' (Construction) drawings all dimensions are to be checked on site by the contractor, scaling is for Local Authority purposes only.
 - Unless otherwise indicated, all dimensions are in millimeters.
 - All information on this drawing is to be read in conjunction with the relevant Donald Insall Associates specification and trade contractors' drawings and information by specialists.
 - In the event of any discrepancy, please contact us immediately.
 - This drawing may contain survey information by others and is to be used solely for the purposes for which it was issued.
 - These are uncontrolled documents issued for information purposes only. If you have any queries regarding the drawings, please contact DIA immediately.
 - Please note DIA cannot be held responsible for any errors arising from changes made to an uncontrolled dwg file.

© 2019 DONALD INSALL ASSOCIATES LTD

Drawing Status		
F Feasibility	B Building Control	T Tender
S Sketch Design	D Design Development	C Construction
P Planning	M Measurement	R Record

Rev	Date	Dwn	Auth	Revision
0	29.01.2021	SXD	LSB	Initial Issue

Exeter College Library Oxford	
Existing Doors Tower DF1	
Project	No
EXCO.01	3202
Scale (A3)	Status
1:5, 1:10	P
	Revision
	0

Donald Insall Associates
Chartered Architects and Historic Building Consultants

2 Queen's Parade, Bath BA1 2NJ
(+44) 01225 469 898
bath@insall-architects.co.uk