

GENERAL NOTES

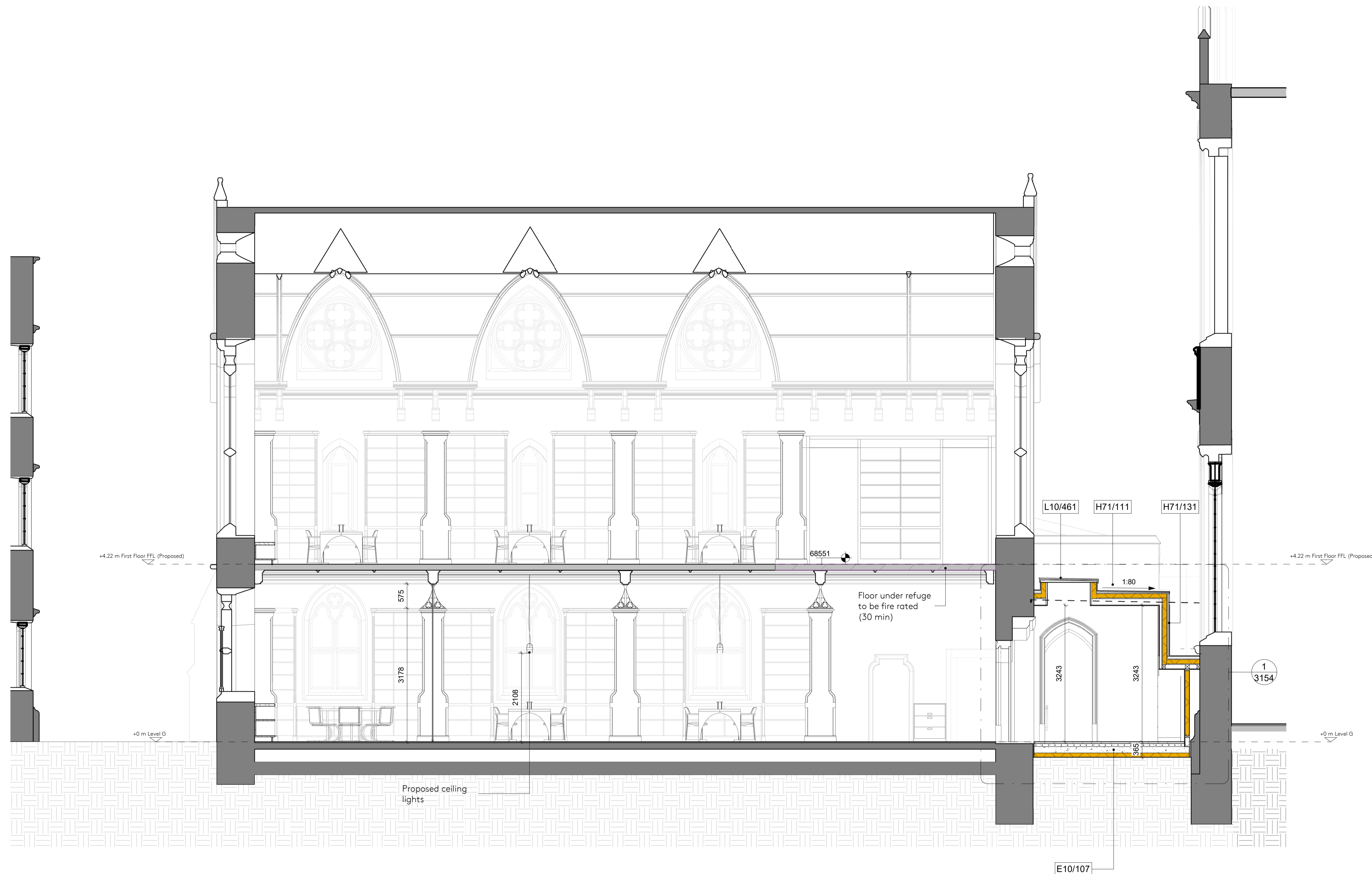
DIMENSIONED DRAWINGS ONLY. DO NOT SCALE.  
 ALL DIMENSIONS TO BE CHECKED PRIOR TO COMMENCEMENT OF ANY WORKS, AND / OR PREPARATION OF ANY SHOP DRAWINGS.  
 ALL DISCREPANCIES TO BE REPORTED TO THE ARCHITECT.  
 THIS DRAWING TO BE READ IN CONJUNCTION WITH ALL OTHER ARCHITECTS DRAWINGS AND SPECIFICATIONS AND OTHER CONSULTANTS INFORMATION.  
 ALL STRUCTURAL ELEMENTS TO BE CROSS CHECKED WITH ENGINEERS DOCUMENTS

NOTES

Stage-3 Indicative Spec Notes	
Key Value	Indicative Specification
E10/107	Insulated Limecrete Floor System to Structural Engineer's Spec. Nominally 120 compacted fill, geotextile, 150 Glapor foamed glass insulation (to achieve U=0.2), geotextile, 150 Limecrete slab with recycled aggregate, 75 limecrete screed with UFH
H71/111	Rolled Lead roofing on warm roof deck with ventilated cavity to Insall spec
H71/131	Rolled Lead cladding over ventilated cavity to Insall spec
L10/461	Glazing Vision Walk-On Circular Rooflight on insulated upstand

REVISION SCHEDULE

REVISION	DATE	DESCRIPTION	ISSUED BY
P1	29/01/21	Planning Application	AA



**Nex —**  
 90-93 Cowcross St, Clerkenwell,  
 London EC1M 6BF  
 e: office@nex-architecture.com  
 t: +44 20 7183 0900

**— Exeter College Oxford**  
 Turf Street, Oxford, OX1 3DP

PROJECT:  
 Exeter College - The Library Renewed

DRAWING:  
 GA Section EE - East / West

STATUS: Planning	DATE: 29/01/21	DRAWN: AA	CHECKED: JF
SCALE: 1 : 50 @ A1	DRAWING NO: 098-Nex- PP-	REVISION: 2503	P1

