







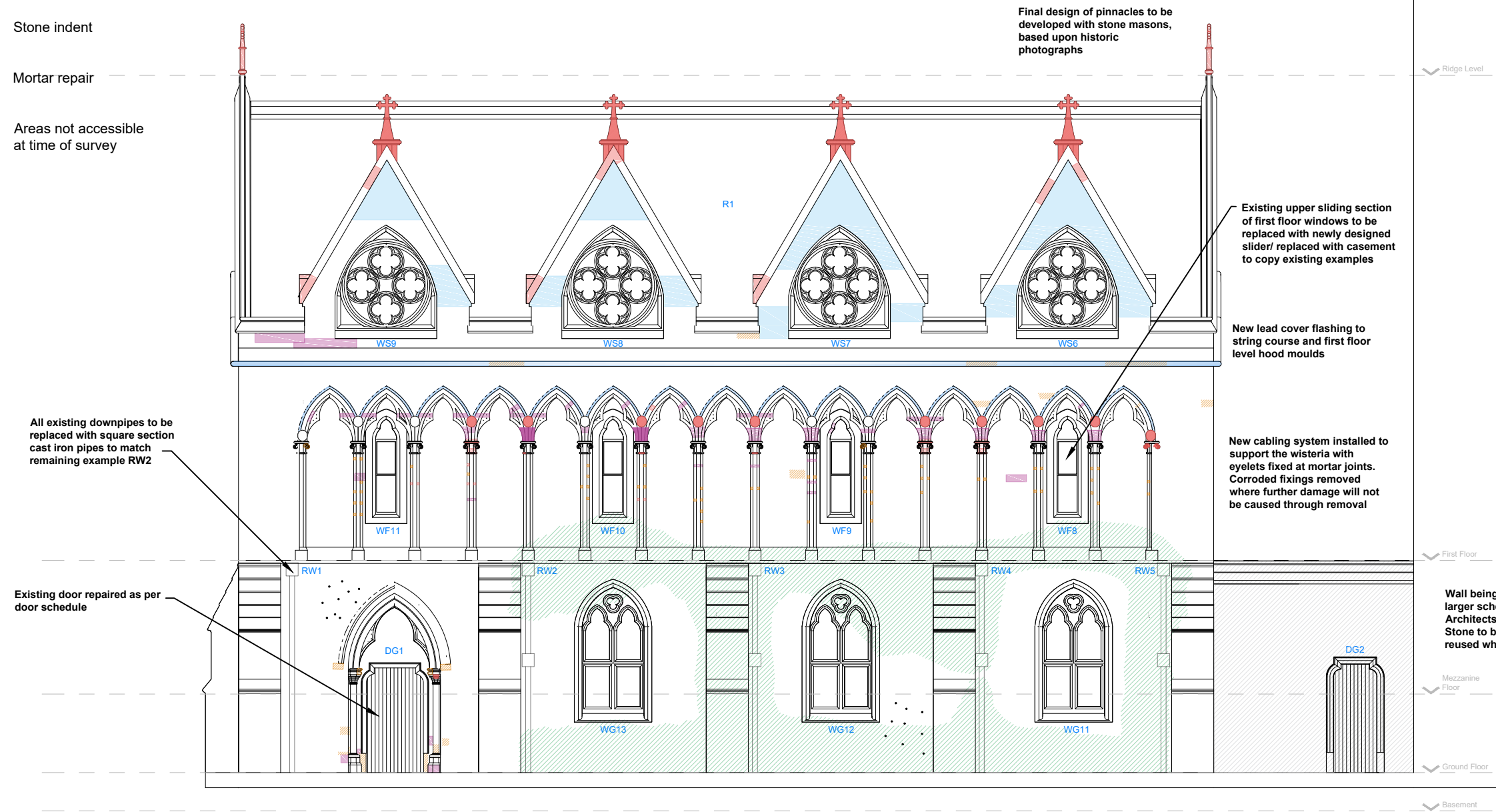


**KEY:**

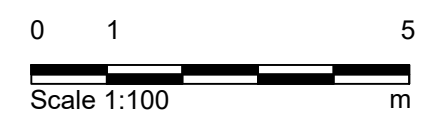
-  Remove trellis
-  Lead flashing
-  Clean stone
-  Repointing
-  Replace stone
-  Stone indent
-  Mortar repair
-  Areas not accessible at time of survey

**NOTES**

Refer to schedule for approximate quantities  
 Decorative stonework to be cleaned before final quantities can be assessed  
 Final repair schedule to be agreed on site once full access is available and vegetation removed where indicated



**01** Proposed repairs - South elevation of Main Library  
 2200 1:100



**Notes**

- Any dwg format drawing is to be read in conjunction with and at the scale of the accompanying pdf.
- Where colours other than black or grey are used, the drawing must be plotted in colour.
- For status 'C' (Construction) drawings all dimensions are to be checked on site by the contractor, scaling is for Local Authority purposes only.
- Unless otherwise indicated, all dimensions are in millimeters.
- All information on this drawing is to be read in conjunction with the relevant Donald Insall Associates specification and trade contractors' drawings and information by specialists.
- In the event of any discrepancy, please contact us immediately.
- This drawing may contain survey information by others and is to be used solely for the purposes for which it was issued.
- These are uncontrolled documents issued for information purposes only. If you have any queries regarding the drawings, please contact DIA immediately.
- Please note DIA cannot be held responsible for any errors arising from changes made to an uncontrolled dwg file.

Rev	Date	Dwn	Auth	Revision
A	22.01.2021	LSB	-	Additional notes added for planning application
0	27.10.2020	LSB	-	Initial Issue

**Donald Insall Associates**  
 Chartered Architects and Historic Building Consultants

1 Harington Place  
 Bath BA1 1HF  
 (+44) 01225 489 898  
 bath@insall-architects.co.uk

Exeter College Library, Oxford

Project	EXCO.01	No	2200
Scale (A3)	1:100	Status	P
		Revision	A

External Repairs  
 South Elevation - Main Library