







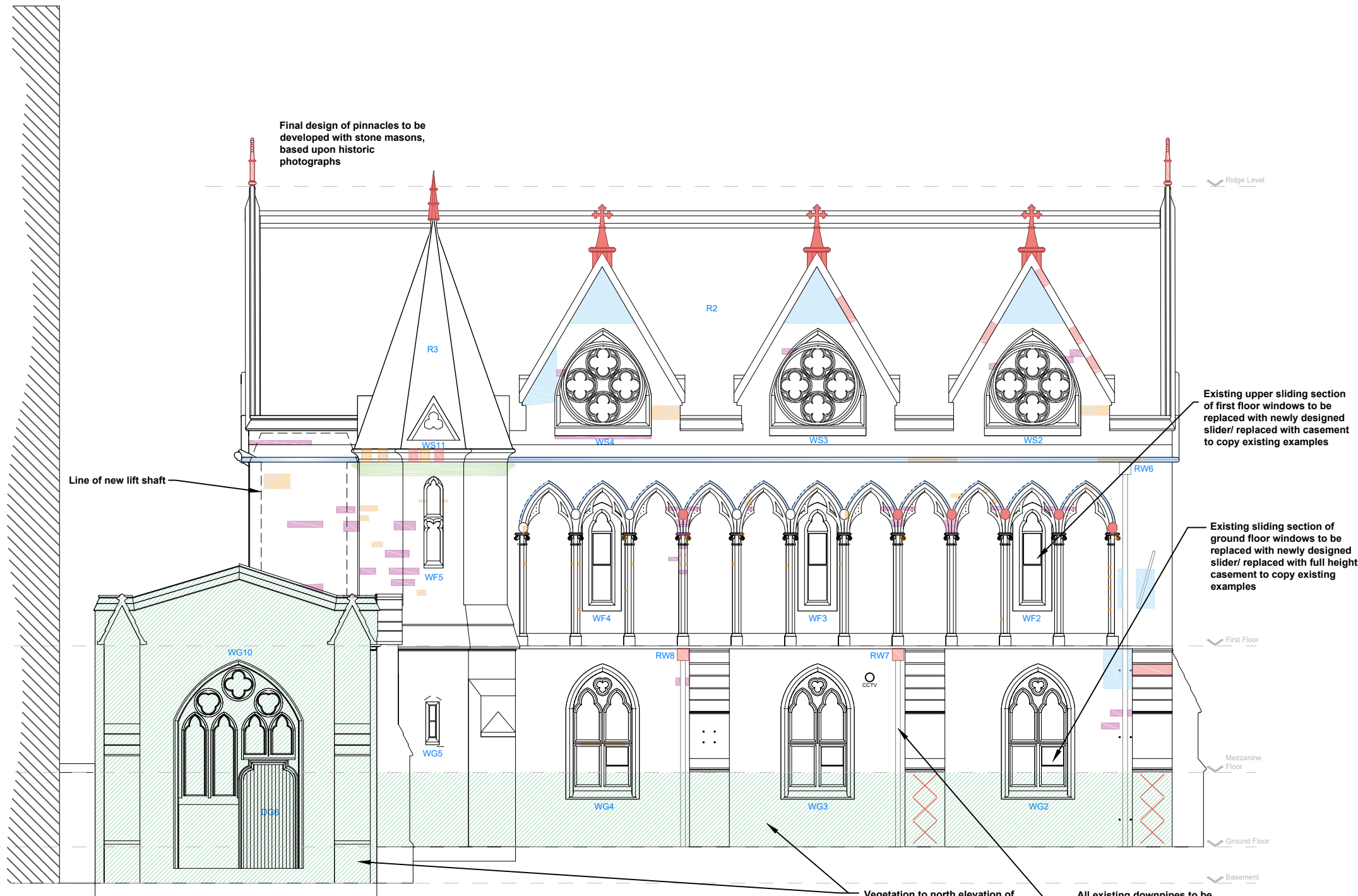


KEY:

-  Remove trellis
-  Lead flashing
-  Clean stone
-  Repointing
-  Replace stone
-  Stone indent
-  Mortar repair
-  Areas not accessible at time of survey

NOTES

Refer to schedule for approximate quantities
 Decorative stonework to be cleaned before final quantities can be assessed
 Final repair schedule to be agreed on site once full access is available and vegetation removed where indicated



01 Proposed repairs - North elevation of Main Library and Annexe
 2201 1:100



Notes

1. Any dwg format drawing is to be read in conjunction with and at the scale of the accompanying pdf.
2. Where colours other than black or grey are used, the drawing must be plotted in colour.
3. For status 'C' (Construction) drawings all dimensions are to be checked on site by the contractor, scaling is for Local Authority purposes only.
4. Unless otherwise indicated, all dimensions are in millimeters.
5. All information on this drawing is to be read in conjunction with the relevant Donald Insall Associates specification and trade contractors' drawings and information by specialists.
6. In the event of any discrepancy, please contact us immediately.
7. This drawing may contain survey information by others and is to be used solely for the purposes for which it was issued.
8. These are uncontrolled documents issued for information purposes only. If you have any queries regarding the drawings, please contact DIA immediately.
9. Please note DIA cannot be held responsible for any errors arising from changes made to an uncontrolled dwg file.

Drawing Status

- F Feasibility
- S Sketch Design
- P Planning
- B Building Control
- D Design Development
- M Measurement
- T Tender
- C Construction
- R Record

Rev	Date	Dwn	Auth	Revision
A	22.01.2021	LSB		Additional notes added for planning application
0	27.10.2020	LSB		Initial Issue

Donald Insall Associates
 Chartered Architects and Historic Building Consultants

1 Harington Place
 Bath BA1 1HF
 (+44) 01225 469 898
 bath@insall-architects.co.uk

Exeter College Library, Oxford

External Repairs North Elevation - Main Library & Annexe	Project EXCO.01	No 2201
Scale (A3) 1:100	Status P	Revision A