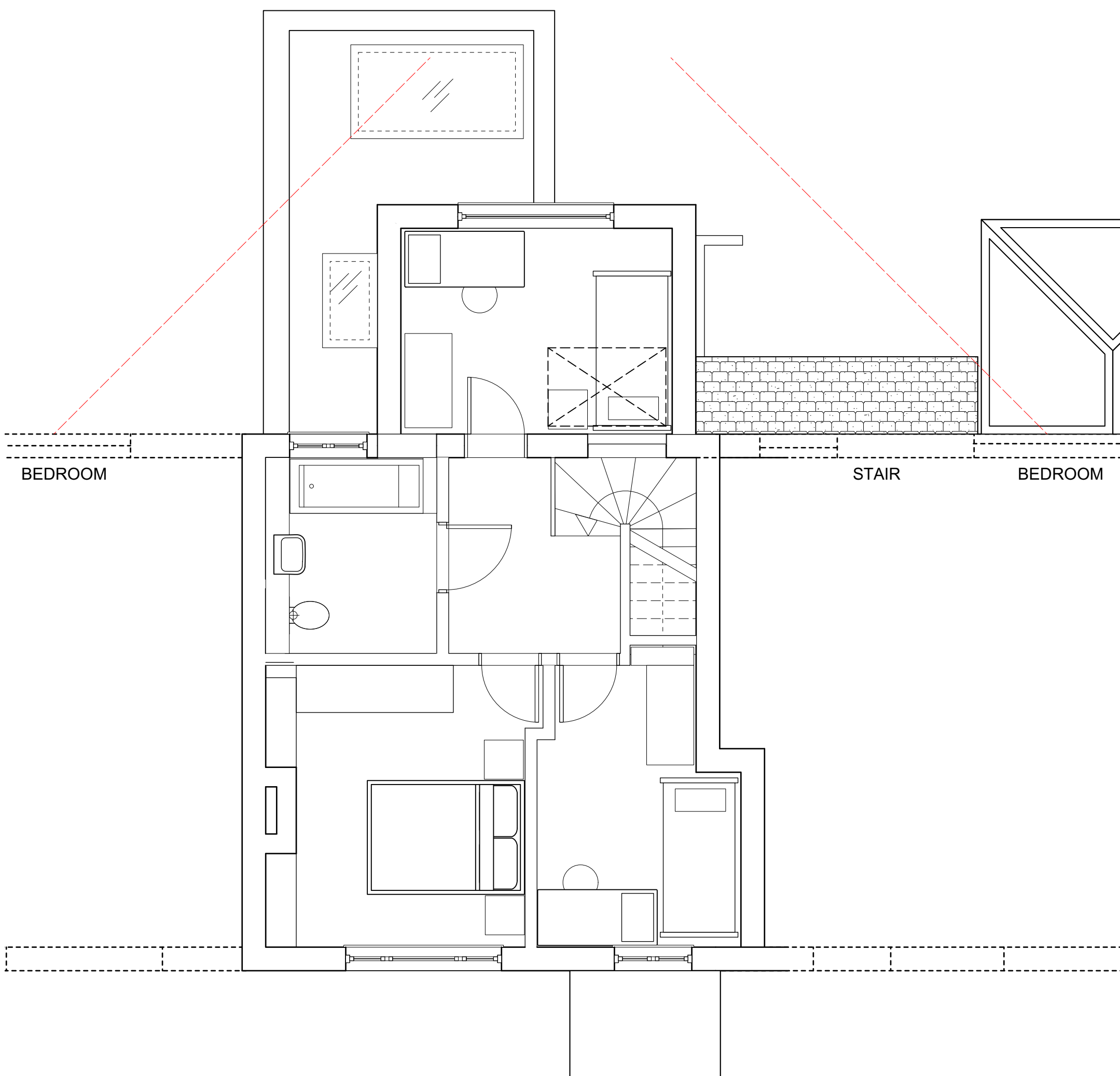
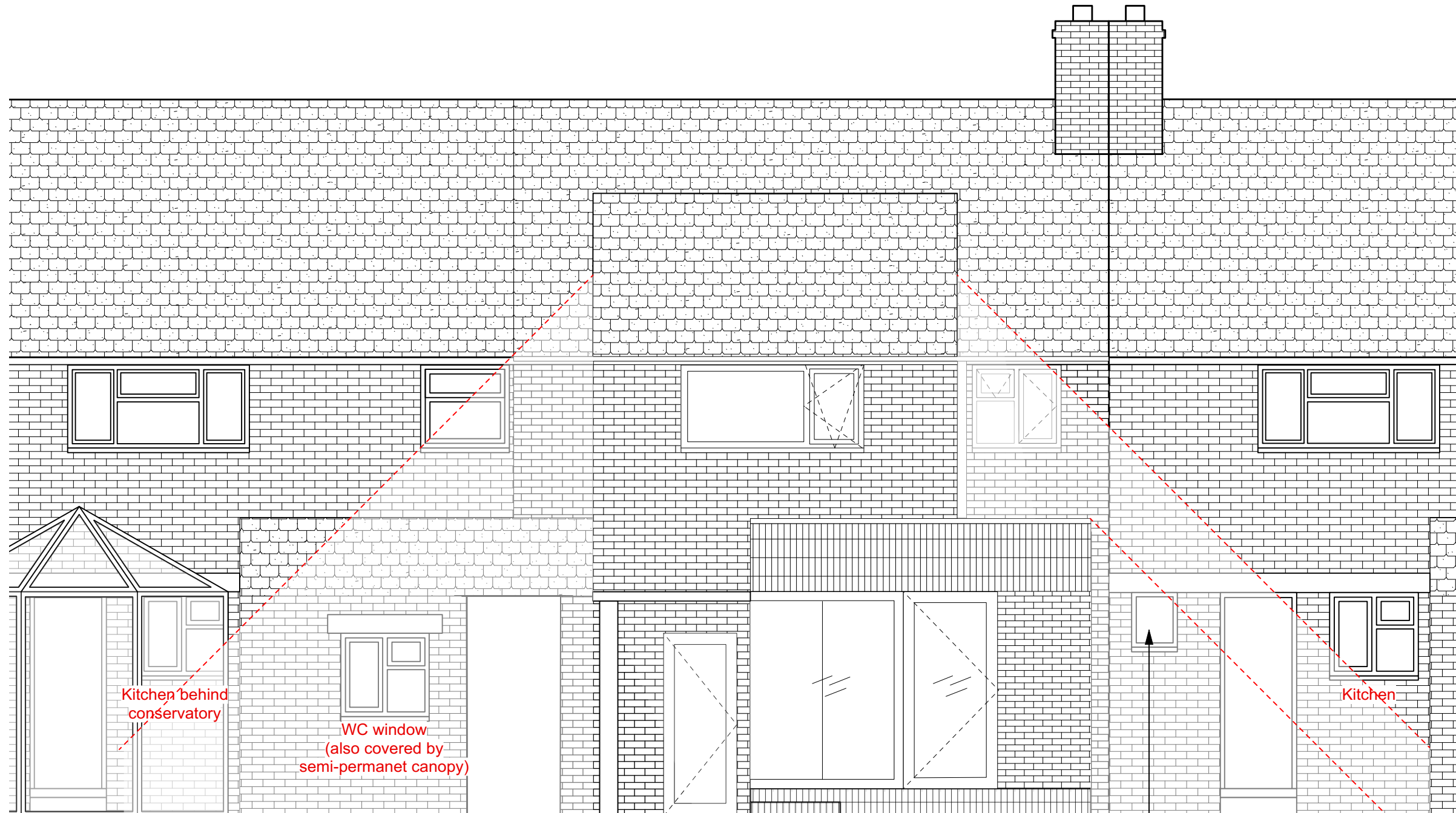


0 1 2 M





Window does not appear in any other houses of the same terrace type therefore is a new addition.

Approx 500 x 500 aperture with a sill height around 1600 from internal floor level. It has obscured glazing and a large ornament placed in the internal sill.

Its proximity to the boundary means that any rear extension to 64 including a proposal within permitted development rights would impact this window in terms of 45 degree line assessment. As the facade is directly north facing, there is limited additional impact on sunlight or overshadowing by the proposal