

NOTES

GENERAL NOTES :-

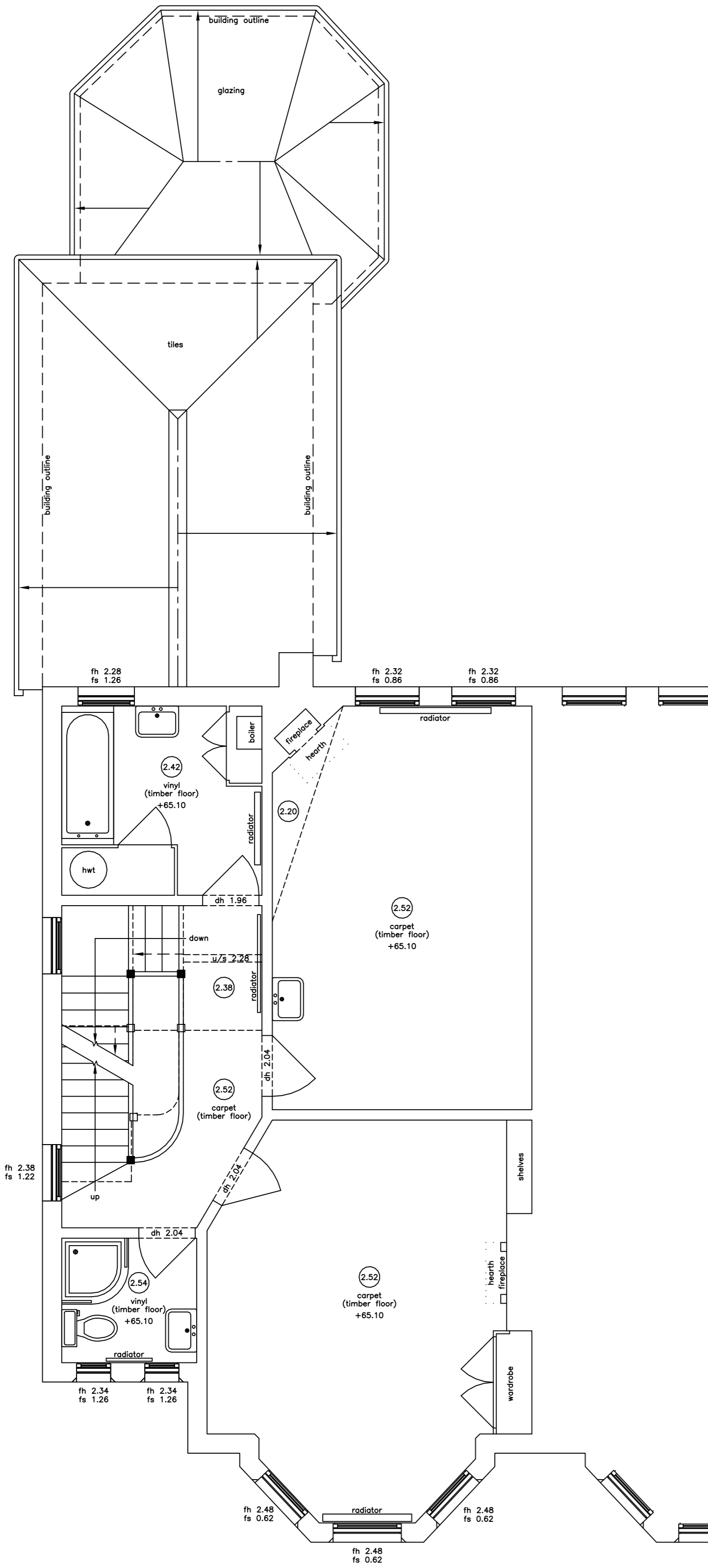
ALL LEVELS ARE IN METRES DERIVED FROM GPS TRANSFORMATION.
THIS DRAWING HAS BEEN PRODUCED WITH A PLOT SCALE ACCURACY OF 1:50

BUILDING SURVEY KEY :-

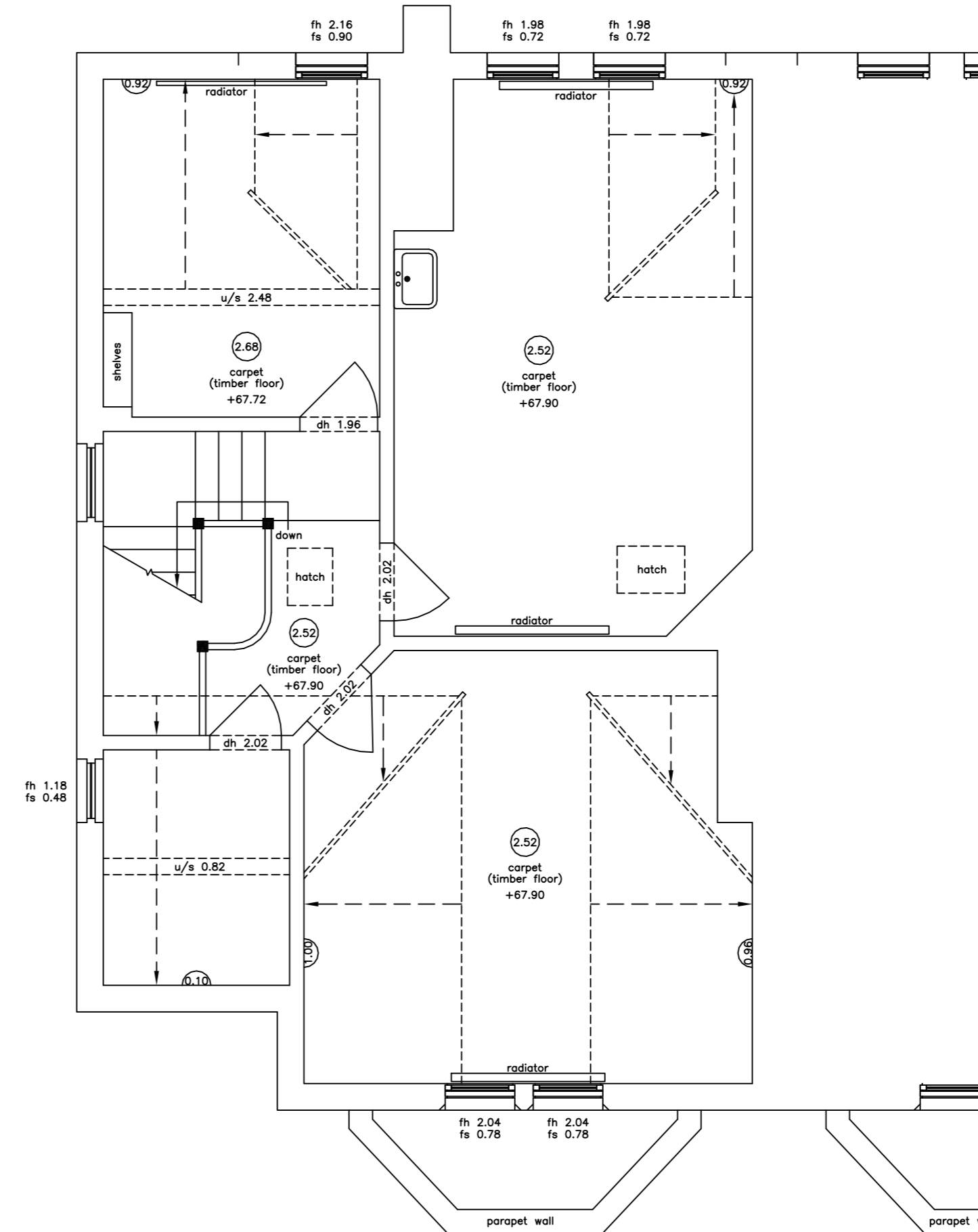
- | | |
|---------------------------|----------------------------------|
| 2.3 - room height | hw - hot water tank |
| 1/b - floor boards | ic - inspection cover |
| # - pipe diameter | OSM - Ordnance Survey bench mark |
| a/b - air brick | rad - radiator |
| ab - alarm box | rl - roof light |
| ah - arch head height | rwp - rain water pipe |
| bd - back drop | sfc - soil filled chamber |
| bk - brick | sh - floor to sill height |
| conc - concrete | sp - arch springing point |
| cr - cable riser | sp - soil pipe |
| db - fuse box | svsc - suspended ceiling |
| dh - door height | svp - soil vent pipe |
| dp - depth | Lrsl - headed level rail |
| e/mtr - electricity metre | TBM - temporary bench mark |
| elec - electricity | tl - threshold level |
| f/p - fire place | top - top of cap |
| fh - floor to head height | top - top of pipe |
| fl - floor level | u/s - underside height |
| fs - floor to sill height | top - top of tank |
| gr - gas riser | u/s - underside height |
| hd - hand dryer | U/L - unable to lift |
| hr - heater | vp - vent pipe |
| | wf - water fountain |
| | wfc - water filled chamber |
| | wp - waste pipe |

SERVICES KEY :-

- | | |
|-------------------------------|--------------------------|
| strip light | alarm keypad |
| light | intercom |
| wall light | alarm control panel |
| emergency light | speaker |
| spot light | projector |
| pull cord | closed circuit tv |
| ventilator | sensor |
| switch | network point |
| light switch | coaxial aerial |
| fused switch | smoke detector |
| isolator switch | heat detector |
| cooker switch | fire alarm siren |
| fuse | fire breakglass |
| blank socket | fire sprinkler |
| single socket | fire blanket |
| double socket | water fire extinguisher |
| ceiling socket/fuse/switch | co2 fire extinguisher |
| thermostat | powder fire extinguisher |
| card access point (wipe card) | fire extinguisher |
| emergency door release | fire alarm control panel |



FIRST FLOOR PLAN



SECOND FLOOR PLAN



MIDLAND SURVEY LTD

HEAD OFFICE
Cromwell House, Westfield Road, Southam, Warwickshire, CV47 0JH.
Tel: 01926 810811 Fax: 01926 810812
E-Mail: mail@midlandsurvey.co.uk
www.midlandsurvey.co.uk

Client	CHD ARCHITECTURE
Project	12 CHALFONT ROAD, OXFORD, OX2 6TH
Title	FIRST AND SECOND FLOOR PLANS
Date	JANUARY 2021
Scale	1:50BA1
Dwg No	37743/3
Surveyor	J.M.P
Checked	D.C.J

TOPOGRAPHICAL (LAND) SURVEYORS / UTILITY SURVEYORS
BUILDING MEASUREMENT SURVEYORS / 3D LASER SCANNING



© Copyright Midland Survey Ltd. Reproduction of this information is prohibited without written authorisation from Midland Survey Ltd.