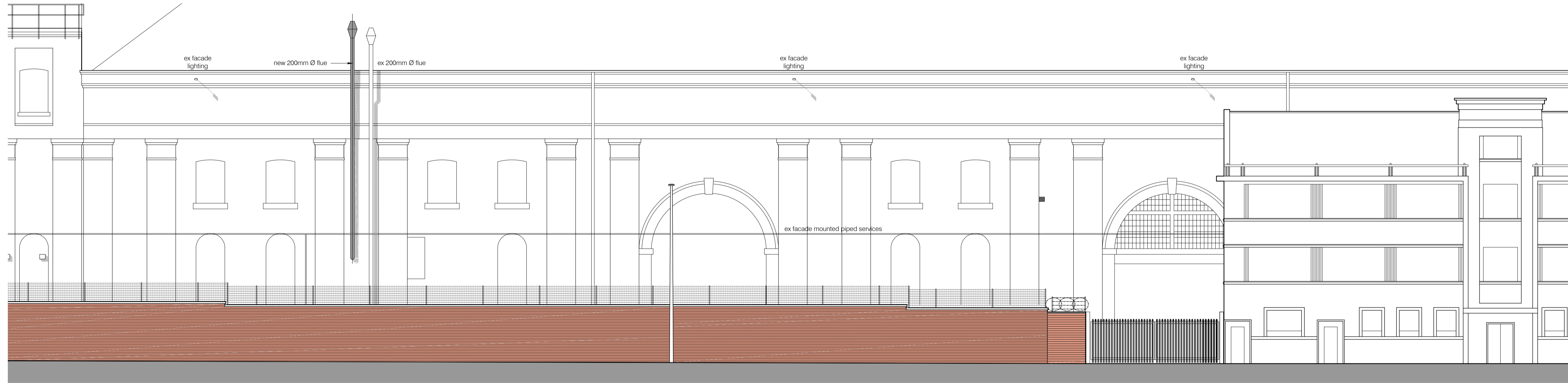
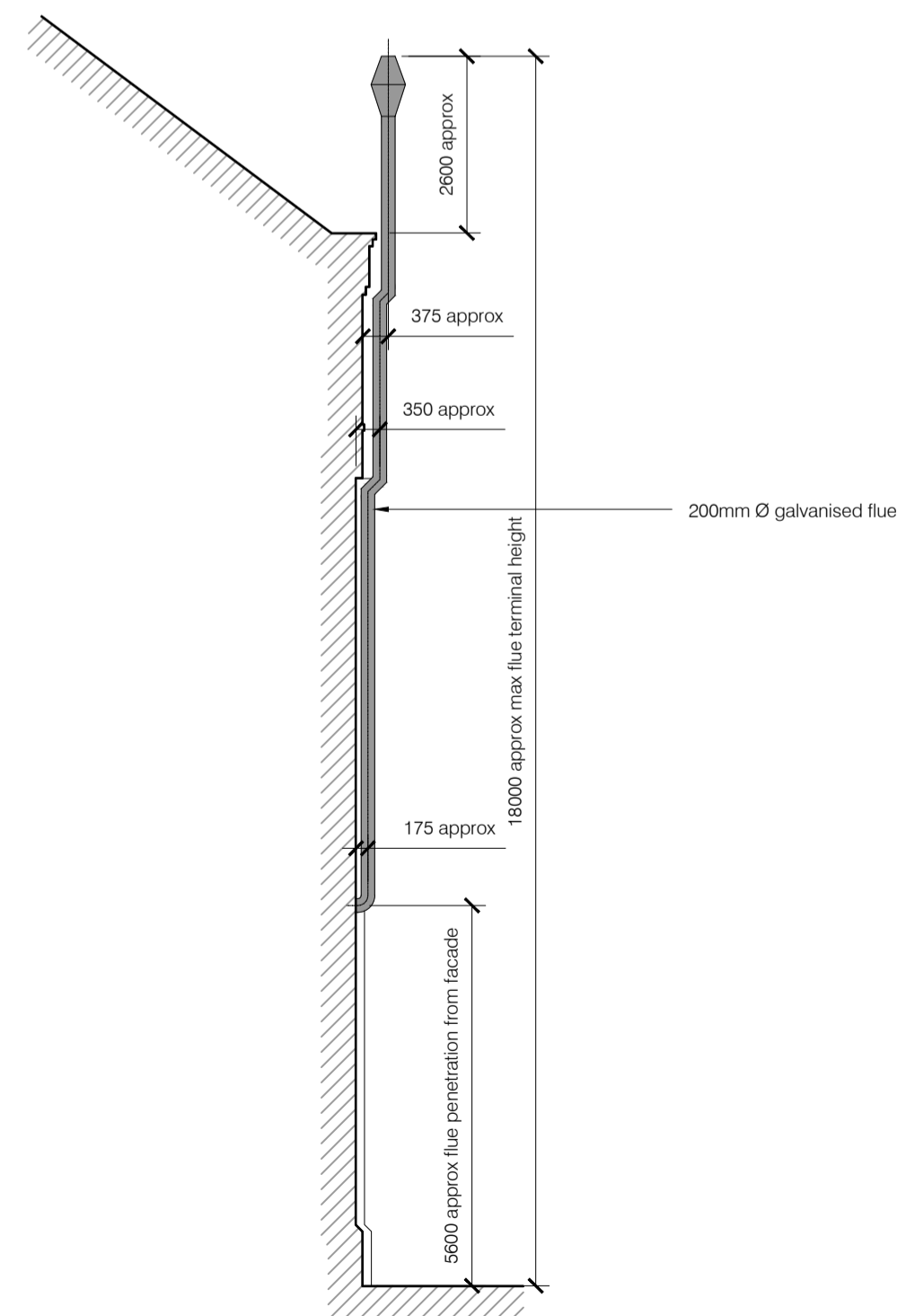


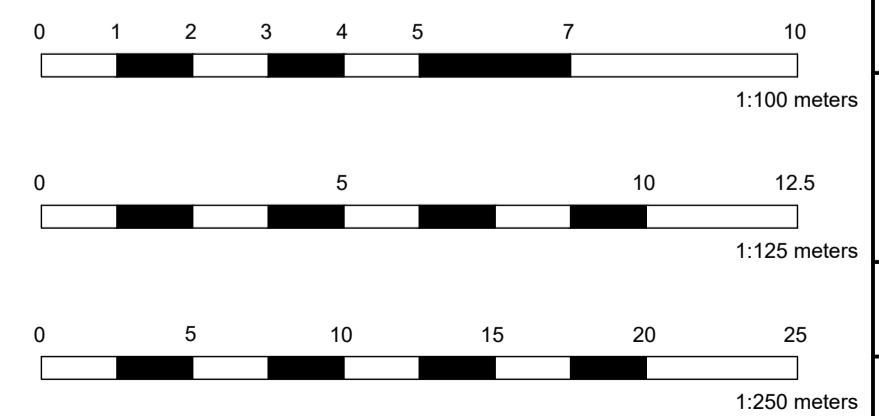
Overall South Elevation
1:250



South Elevation Part
1:125



Sectional Elevation
1:100



/	05.03.21	First Issue - FOR PLANNING	SM	AP
REV	DATE	REVISION DESCRIPTION	DRN	VER

THIS DRAWING IS COPYRIGHT © DO NOT SCALE FROM THIS DRAWING.

Arch Henderson
1919

Civil Engineers
Structural Engineers
Principal Designers
Architects
Geotechnical services
Environmental services

142 St. Vincent Street, Glasgow G2 5LA
Tel : 0141 227 3060 - Fax : 0141 248 9542
www.arch-henderson.co.uk - email : glasgow@arch-henderson.co.uk

Offices in: Aberdeen, Dundee, Falkland Islands, Glasgow, Inverness, Lewick, Southampton, Stromness and Thurso

PROJECT :
BAE SYSTEMS SURFACE SHIPS LIMITED
WARD COMPLEX GOVAN

TITLE :
PROPOSED ELEVATION ON GOVAN ROAD

DRAWN : SM	DATE : MAR 21	VERIFIED : --	APPROVED : AP
SCALE : (A1) AS SHOWN		DRAWING STATUS : PLANNING	

DRAWING No : 205051 - 005 REV : /

DO NOT SCALE