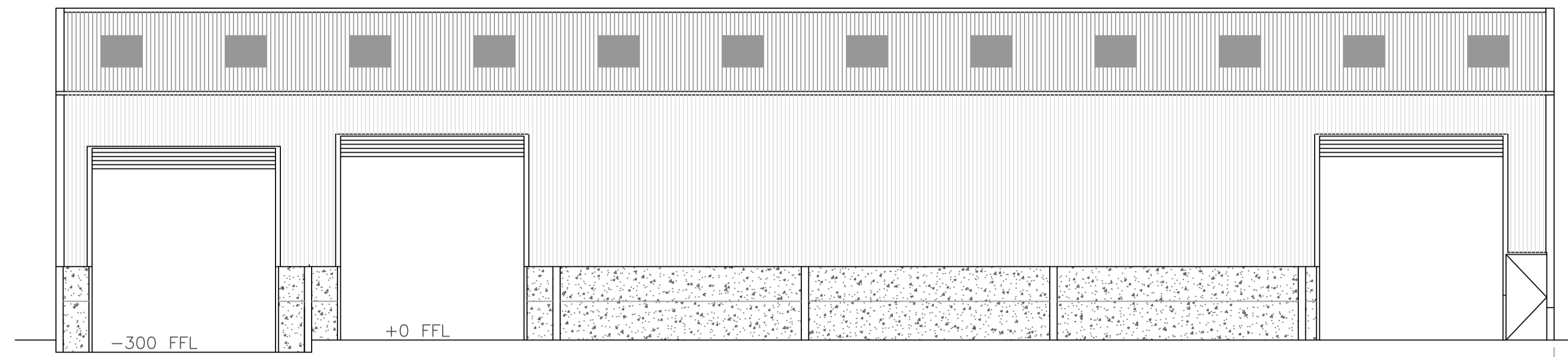
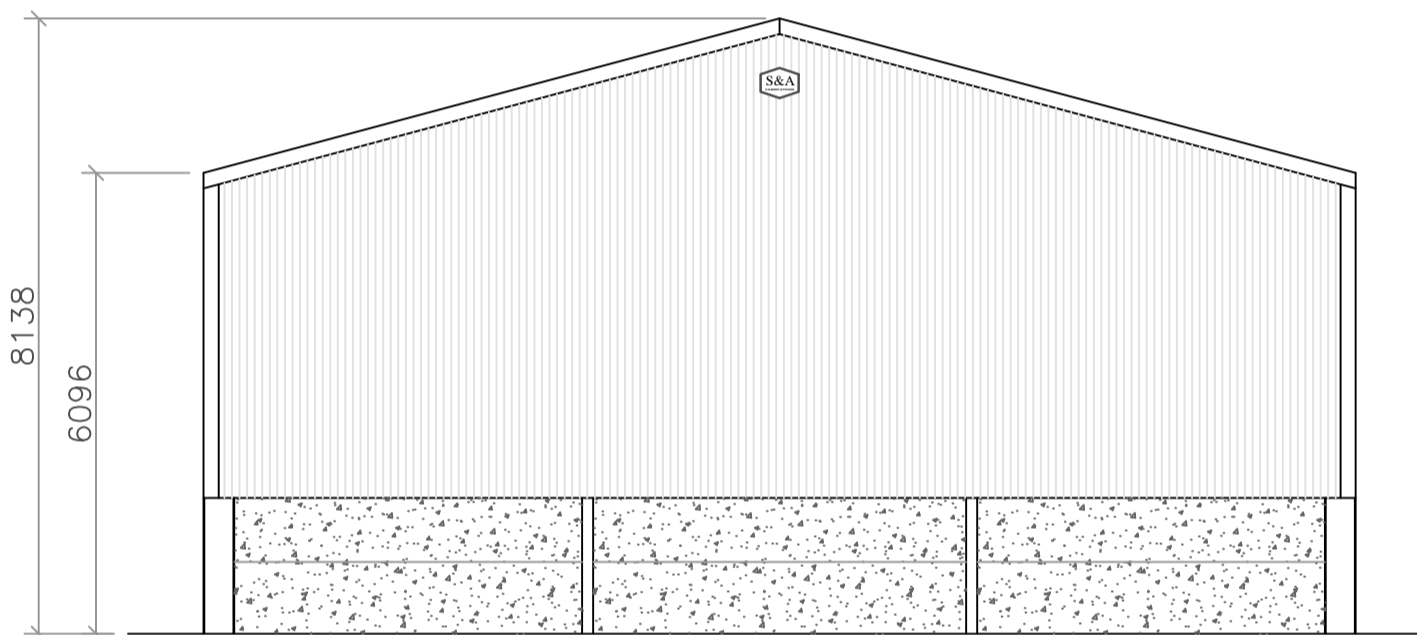


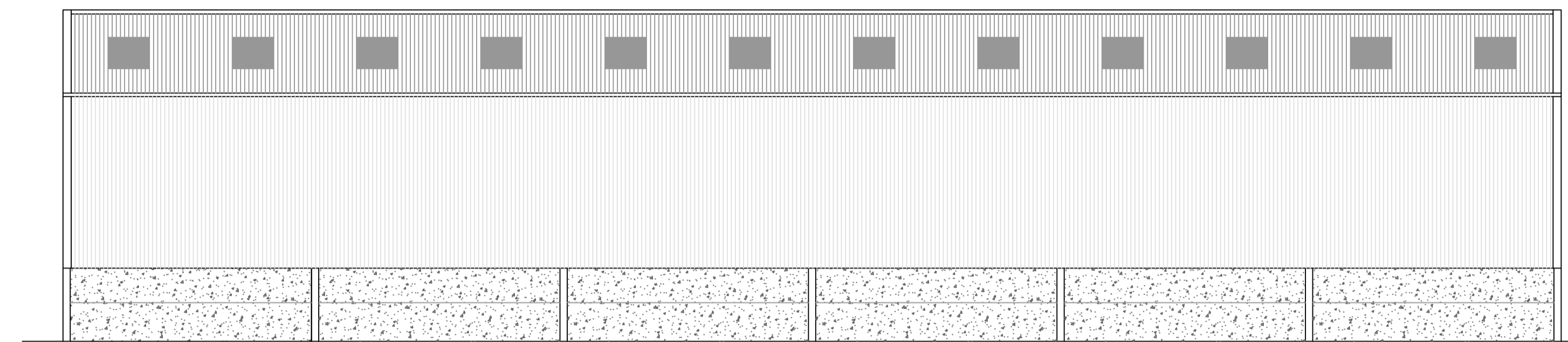
End 2



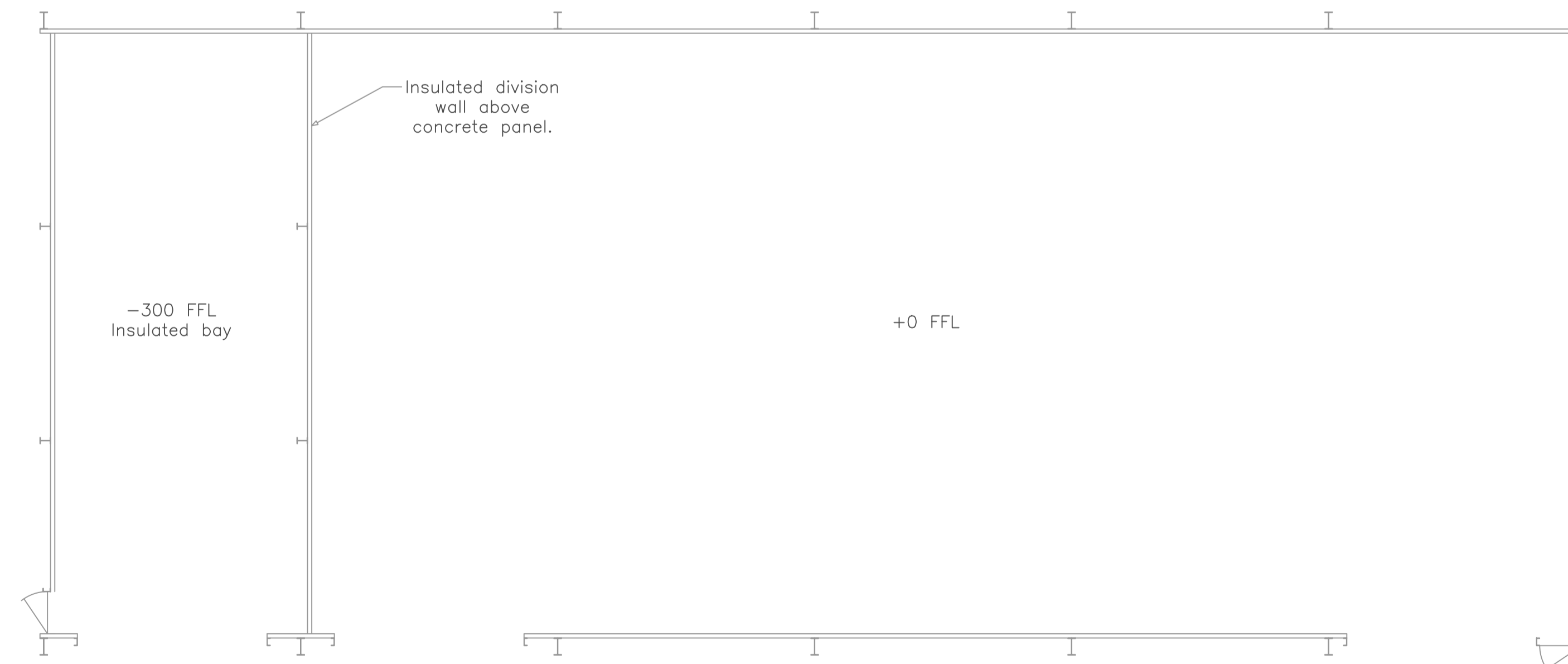
Side 1



End 1



Side 2



Notes:

Length – 36.576m (6No. 6.096m bays)
 Width – 15.240m
 Height – 6.096m eaves
 Roof pitch – 15 degrees

Roof cladding – Natural colour fibre cement sheeting with approx 10% rooflights.
 Vertical cladding – 0.5mm plastisol box profile sheeting 4.3m below eaves to all elevations excluding 3No 4.5m x 5.0m roller shutter doors to side 1 and 2No. personnel doors.
 Self coloured concrete panels to lower walls.
 Spray store bay to be insulated – lined internally with cavity insulated with rockwool insulation.

DO NOT SCALE – IF IN DOUBT ASK		
A	GENERAL UPDATE	04/03/21
REV	DESCRIPTION	DATE

CLIENT: Stovin
 PROJECT: Proposed machine store
 DRAWING TITLE: Elevations

DRG NO: 1867-EL	REVISION: A
DATE: 02/02/2021	SCALE: 1:100 @ A1
DRN: AL	CHK'D:



S & A FABRICATIONS
 HARMIRE ENTERPRISE PARK
 BARNARD CASTLE
 CO. DURHAM, DL12 8EH
 TEL: 01833 690379
 FAX: 01833 690040
 © 2021 S AND A FABRICATIONS LTD.