

## 8. Photographs



Photo 1

North West elevation

(after removal of the concrete path)



Photo 2

North West elevation

Crack in rendering



Photo 3

North West Elevation (corner)

(after removal of concrete path)

Showing damp and concrete over bricks



Photo 4

North West Elevation

Evidence of movement in bricks and soleplate, covered in concrete



Photo 5

North West Elevation

Evidence of movement in soleplate, cracking of concrete covering and bowing render



Photo 6

North West Elevation

Evidence of movement in soleplate, cracking of concrete covering



Photo 7

North West Elevation

Crack in concrete render tracking down to soleplate



Photo 8

South West Elevation

Evidence of movement/cracking in concrete covering over bricks



Photo 9

South West Elevation

Evidence of movement/cracking in concrete over bricks



Photo 10

South West Elevation

Cracking in concrete render

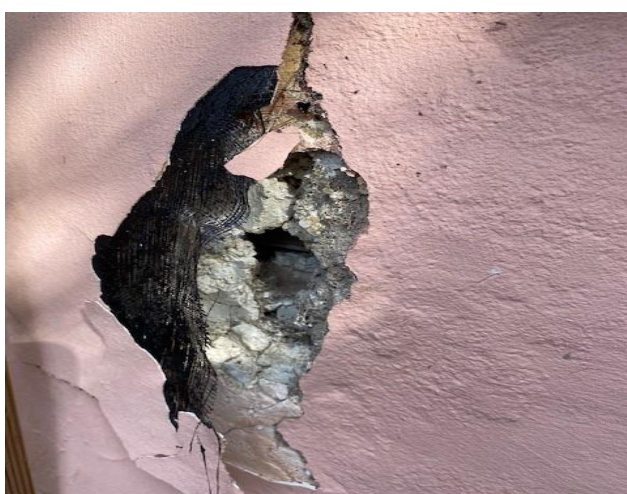


Photo 11

South West Elevation

Cracking in render giving sight to concrete

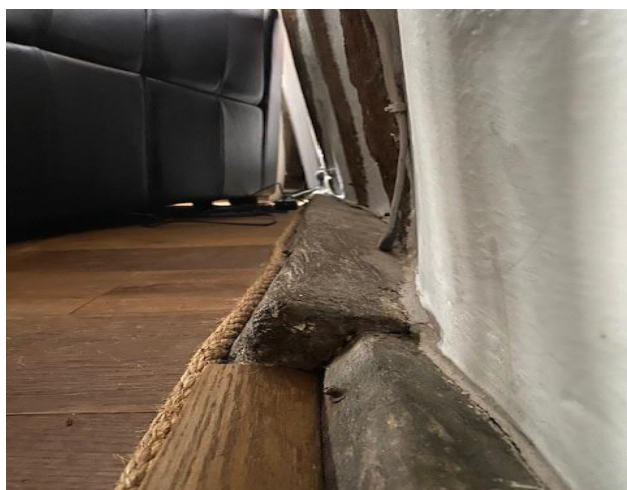


Photo 12

South West Elevation

Internal photograph showing rolled soleplate and vertical timbers not supported