

Pond Landscaping

The Pond, Bury Road, Great Thurlow, Haverhill, CB9 7LF

DESIGN AND ACCESS STATEMENT

Issue (1) dated 2 March 2021

1.00 DESIGN STATEMENT

1.01 Application Title

Vegetation clearance, landscaping including a retained pond and ditch, and planting to an existing pond area.

1.02 Existing Site Description

The proposed site is part of Hall Farm Great Thurlow, in turn within Thurlow Estate.

The site is adjacent to the Dovecote- a period Grade II Listed Building

The site is immediately to the South of Bury Road.

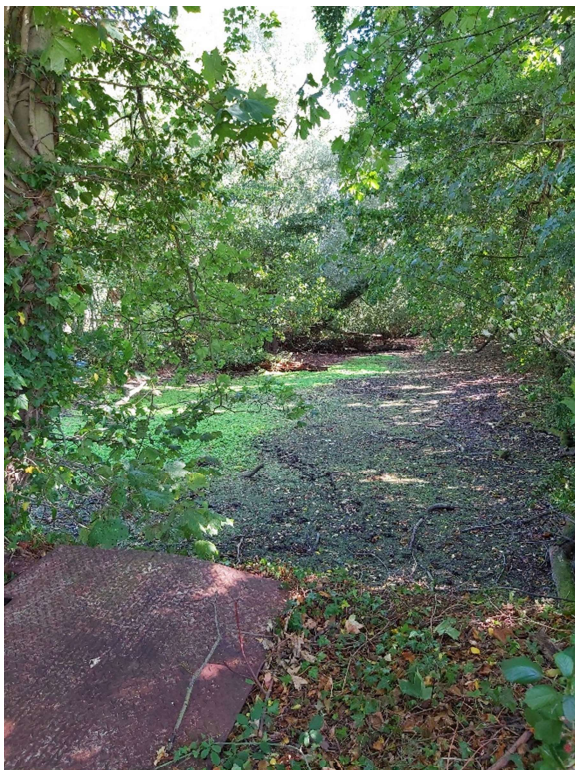
The site lies within the Great and Little Thurlow Conservation Area.

The pond contains only shallow water, around 300mm maximum during wet periods and is seasonal.

The pond is completely dry much of the year.

The margins of the pond are wooded. Over time many self- set trees and saplings have grown up crowding the trees which are in good health.

Some trees and branches have died and fallen into the pond area.



Picture 1

5 September 2020

Pond viewed from the West.



Picture 2

5 September 2020

Surface of pond area noting it is dry and showing debris from fallen trees and branches.

The pond receives surface water in wet weather from a ditch adjacent to Bury Road discharged from a 225mm open ended pipe.

An overflow culverted drain is located at the West end of the pond.

The pond therefore operates as a water course between the inlet point and overflow point.

Design Principles and Concepts.

1.02 The Proposed Works

Existing features and levels are indicated on the submitted EDM survey

Sunshine Surveys GY\4955 1\001

Vegetation Clearance is indicated on the submitted drawing

Land Sculpture Design Partnership 1408-011

Landscaping design is indicated on the submitted drawing

Land Sculpture Design Partnership 1408-02

A Site Access Plan showing temporary plant and vehicle routes.

The watercourse drainage is retained as indicated on Bullard Associates drawing.008-2020-02-P3

The adjustment to the drains requires approval of Suffolk County Drainage and Flood Control under a Section 23 Agreement.

A pond is retained at the Eastern end of the old pond area within the scheme designs.

The pond margins to be cleared of vegetation in accordance with the vegetation clearance plan.

The debris to be removed within the former pond.

Fill with imported inert subsoil materials to within 400mm of final surface contours.

Provide 400mm of topsoil cover to the complete restoration area.

Carry out the landscaping scheme as indicated on the Landscape plan.

1.03 Principles of Design and ongoing management

The works seek to retain and enhance the natural wooded area.

The site would be opened to allow daylight to assist with tree, plant and flower growth.

The site would be managed periodically by machine cutting. This would be infrequently carried out to encourage plants and wild flowers to grow.

1.04 Pre- Application Advice

Mr Dave Beighton advised in an email dated 25 July 2019 that an application would require

A Biodiversity survey and assessment

A tree survey and impact assessment

A soft landscaping plan.

A heritage statement will also be necessary to appraise the effects upon the Listed Dovecot (adjacent to) the site and the Conservation Area Generally.

End of Design Statement

ACCESS STATEMENT

Access to the site will be required to the site to carry out the vegetation clearance and filling operations.

Access will be via the existing hardcore surfaced farm road with a temporary access to the works area Indicated on the accompanying access plan.

Care will be taken to avoid transfer of mud onto the public highway from the site operations.

Temporary signs will be erected on Bury Road to warn traffic of Heavy Goods vehicle movements

During the period of site works.

End of Access Statement