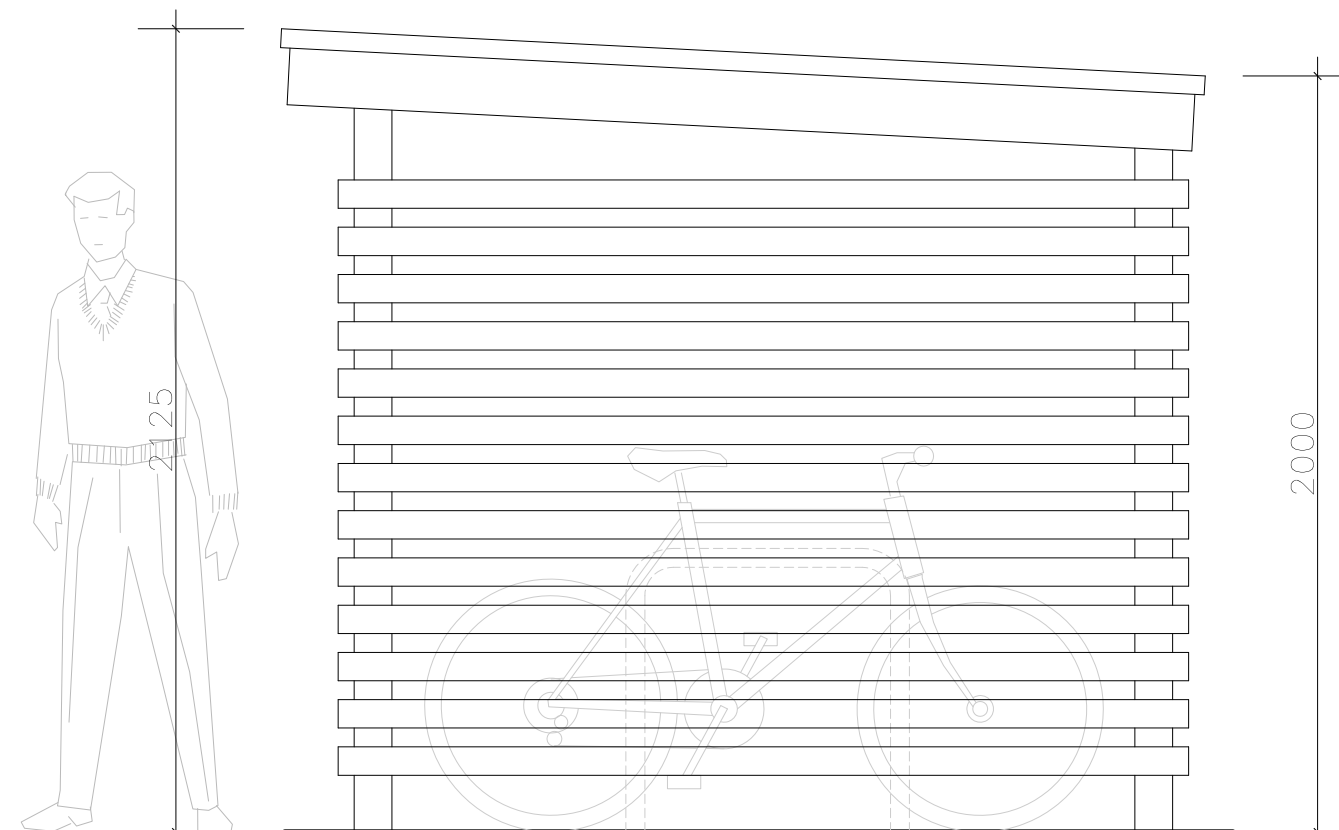


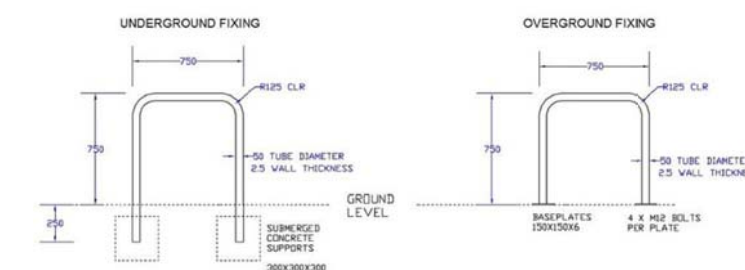
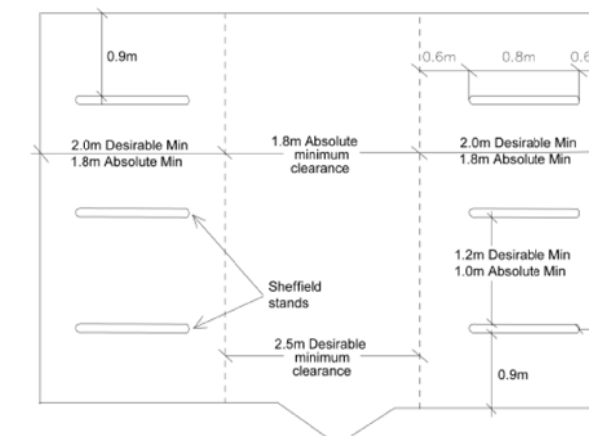
FRONT ELEVATION



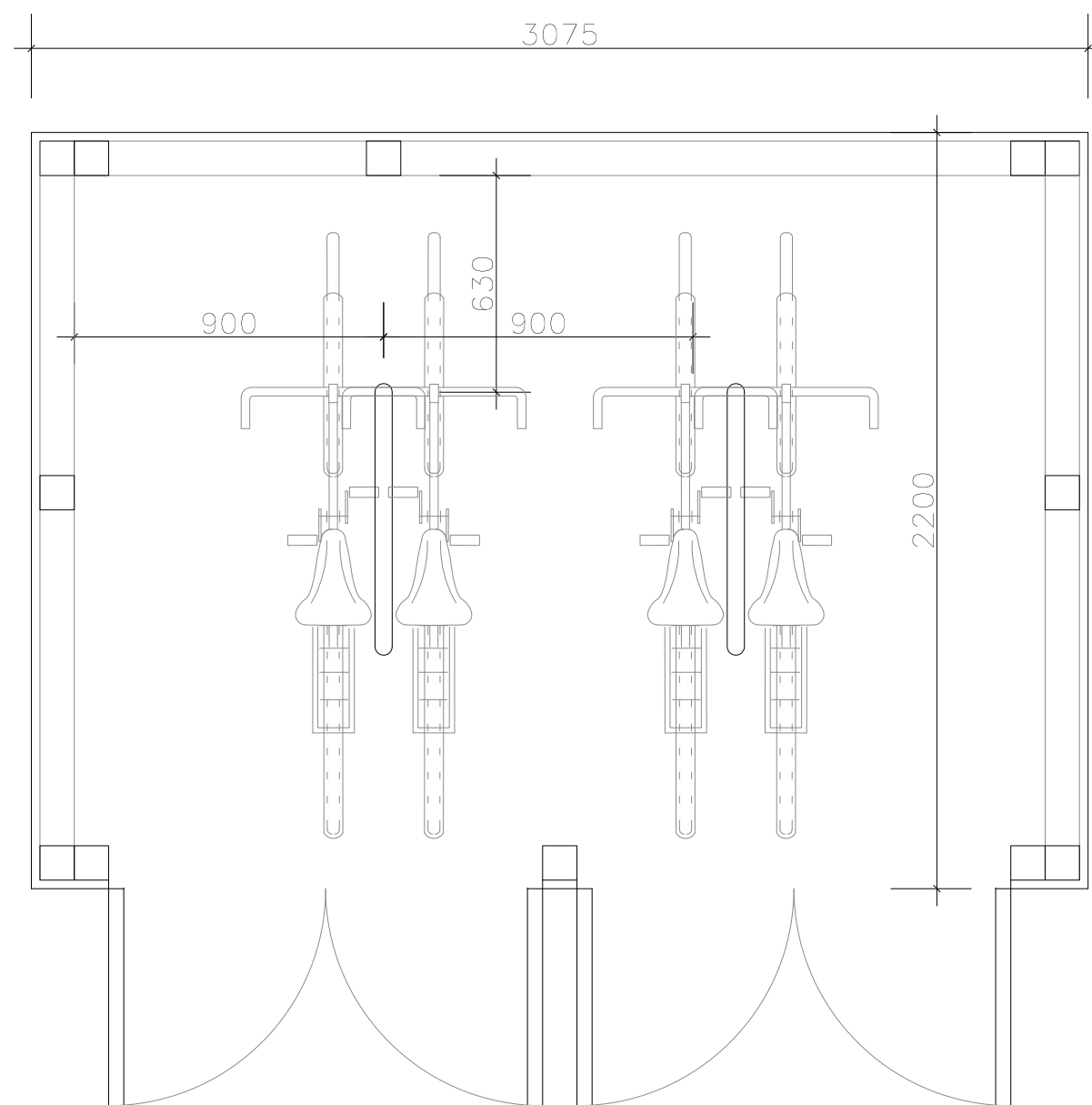
SIDE ELEVATION



TYPICAL IMAGE OF STYLE FOR CYCLE & BIN STORE



CYCLE STANDS in accordance with OCC HIGHWAYS recommendations



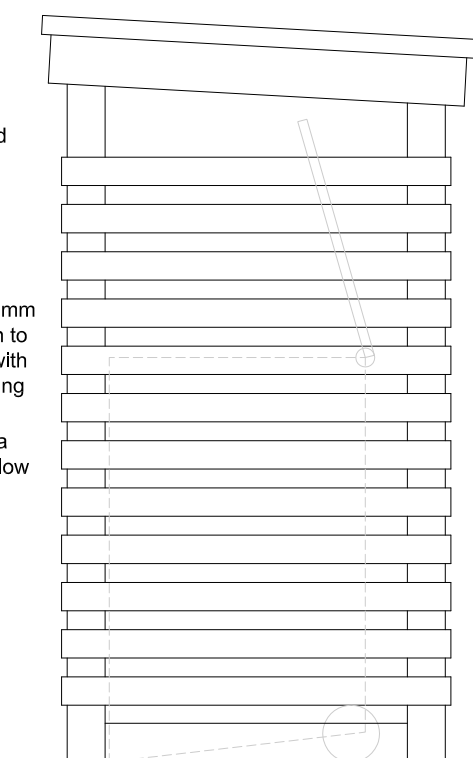
CYCLES STORE:
GROUND FLOOR PLAN

150mm concrete oversite slab and brushed finish laid on 25mm sand blinding on compacted 150mm hardcore sub base

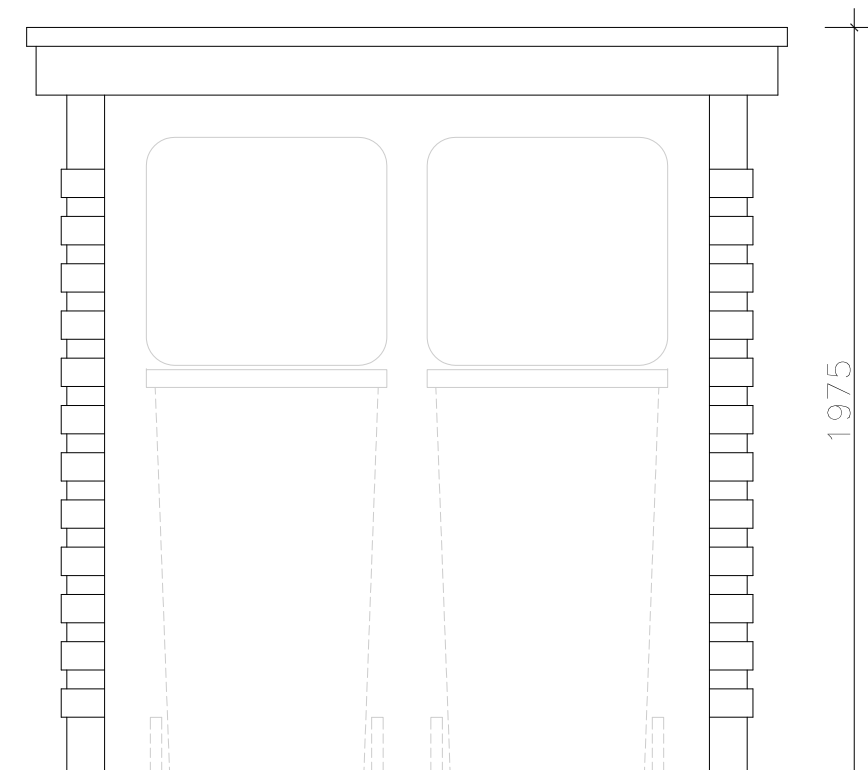
proprietary bicycle rack floor mounted off plates bolted down to floor slab

side wall constructed with treated 100 x 50mm SC3 studs @400mm ctrs, and bolted down to sw plate on thickened concrete slab and with 150 x 20mm stained timber weather boarding

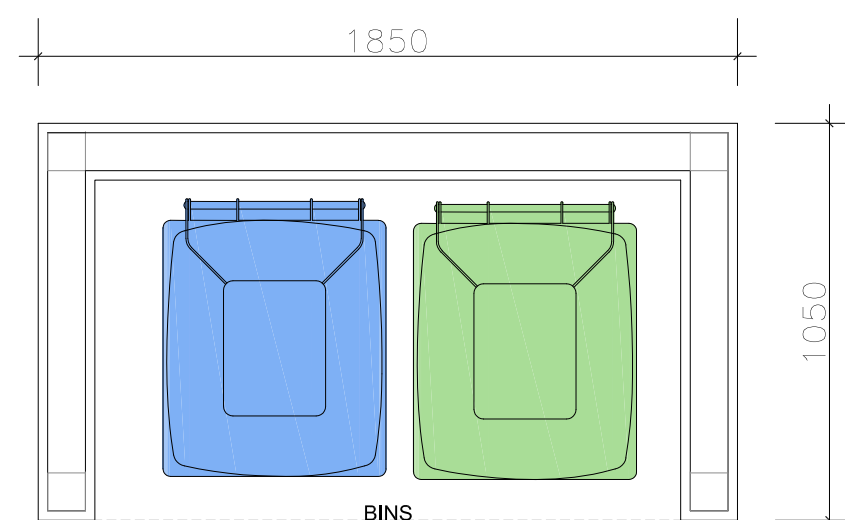
150mm wide perimeter gravel strip with pea shingle back fill and to level min. 50mm below slab level



SIDE ELEVATION

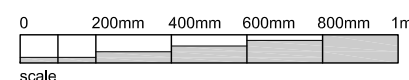


FRONT ELEVATION



FLOOR PLAN

side wall constructed with treated 100 x 50mm SC3 studs @400mm ctrs, and bolted down to sw plate on thickened concrete slab and with 75 x 25mm stained timber screen boarding with 50mm gaps between



THIS DRAWING IS THE COPYRIGHT OF NT:architect AND MAY NOT BE AMENDED, COPIED OR REPRODUCED WITHOUT WRITTEN PERMISSION; NO LIABILITY WILL BE ACCEPTED FOR AMENDMENTS MADE BY OTHER PERSONS.

DO NOT SCALE OFF THE DRAWINGS.

rev:

client:
RMA PROPERTIES LTD.

366 MARSTON ROAD
OXFORD
OXON. OX3 0JD

project:
PROPOSED EXTENSION TO CREATE
1 x 2 BED DWELLING

drawing:
PROPOSED:
BIN & CYCLE STORES

date:
MAR 21
scale:
1:20@A2
drawing no.:
20.79 - P2.03

drawn:
NT

rev:

NT:architect

t: 07855 978389
e: office@ntarchitect.uk