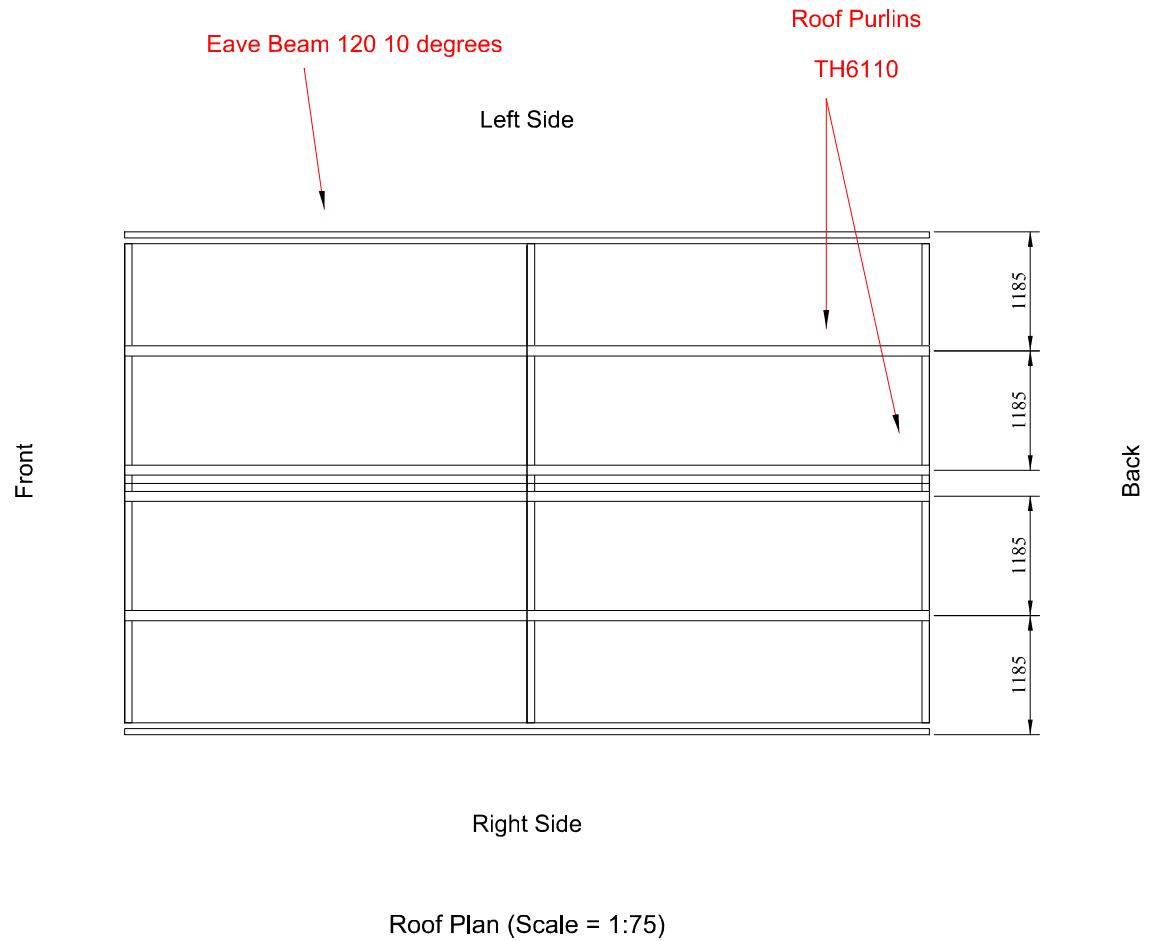


GENERAL NOTES

1. ALL CLADDING TO BE CE MARKED AND HOT-DIP GALVANISED TO BS EN 10346:2009.
2. ALL STEEL (INCLUDING PURLINS) TO BE CE MARKED AND TO EXECUTION CLASS 2 AS PER EN 1090 - 1:2009 AND HOT-DIP GALVANISED TO BS EN 10346:2009 Fe E390G-Z275.
3. DESIGN LOADS TO BS 6399-1:1997 AND BS 6399-3:1997. DEAD LOADS:
SW CONSIDERED INTERNALLY WITHIN PROGRAMME
-CEILINGS AND SERVICES = kN/m²
-RAFTER CLADDINGS AND PURLINS = kN/m²
-COLUMN CLADDINGS AND RAILS = kN/m²
-SNOW LOAD = kN/m²
-LIVE LOAD = kN/m²
4. WIND LOAD ACCORDING TO BS 6399-2:1997 WITH THE FOLLOWING PARAMETERS:
BASIC WIND SPEED = m/s
SITE ALTITUDE = m
SITE ALTITUDE FACTOR =
SEASONAL FACTOR =
DIRECTION FACTOR =
SITE DISTANCE FROM SEA = Coastal
5. ALL STEEL TO HAVE YIELD STRENGTH Py = 450 MPa.



Capital Steel Limited

Web: www.capitalsteelbuildings.co.uk
Email: info@capitalsteelbuildings.co.uk

Supplied By: Grampian Steel Buildings Ltd

Phone +44 1779 480 700
Email robert@grampiansteelbuildings.co.uk

Customer: ANDY WILKIE

Peterhead AB42 3JN