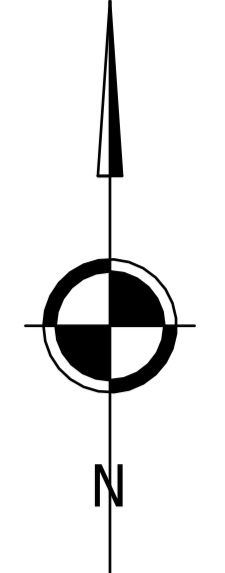


© Survey Operations Limited 2021
 Reproduction in whole or in part by any means is prohibited without the prior permission of Survey Operations Limited.

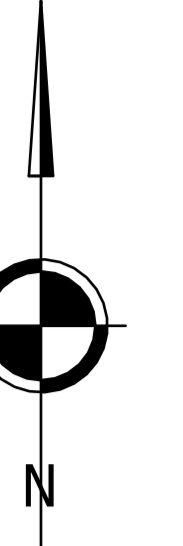


Note:
 The survey is plotted on a plane local Grid. Orientation to National Grid. All levels relate to Ordnance Datum, achieved using the OS National GPS Network. Survey Control Markers established for Mapping purposes only and should not be used for Construction without the written approval of Survey Operations Ltd.

| Point | Easting | Northing | Height |
|-------|-----------|-----------|--------|
| S01 | 338646.93 | 278207.68 | 10.03 |
| S02 | 338699.63 | 278206.00 | 9.20 |
| S03 | 338864.18 | 278423.71 | 15.27 |
| S04 | 338980.08 | 278423.71 | 15.38 |
| S05 | 339011.23 | 278271.57 | 15.46 |
| S07 | 339041.52 | 278423.00 | 15.45 |
| S08 | 339000.04 | 278515.28 | 15.33 |
| W01 | 339022.85 | 278270.33 | 15.64 |
| W02 | 339000.04 | 278430.30 | 15.41 |
| W03 | 339100.17 | 278430.80 | 15.43 |
| W04 | 339099.97 | 278430.80 | 15.39 |
| W05 | 339041.00 | 278650.08 | 14.81 |
| W06 | 339022.00 | 278710.24 | 14.63 |
| W07 | 338995.18 | 278707.08 | 14.37 |
| W08 | 338994.63 | 278650.00 | 14.62 |
| W09 | 338994.63 | 278650.00 | 14.25 |
| W10 | 338994.63 | 278650.00 | 14.24 |
| W11 | 338994.63 | 278650.00 | 14.23 |
| W12 | 338994.63 | 278650.00 | 14.22 |
| W13 | 338994.63 | 278650.00 | 14.21 |
| W14 | 338994.63 | 278650.00 | 14.20 |
| W15 | 338994.63 | 278650.00 | 14.19 |
| W16 | 338994.63 | 278650.00 | 14.18 |
| W17 | 338994.63 | 278650.00 | 14.17 |
| W18 | 338994.63 | 278650.00 | 14.16 |
| W19 | 338994.63 | 278650.00 | 14.15 |
| W20 | 338994.63 | 278650.00 | 14.14 |
| W21 | 338994.63 | 278650.00 | 14.13 |
| W22 | 338994.63 | 278650.00 | 14.12 |
| W23 | 338994.63 | 278650.00 | 14.11 |
| W24 | 338994.63 | 278650.00 | 14.10 |
| W25 | 338994.63 | 278650.00 | 14.09 |
| W26 | 338994.63 | 278650.00 | 14.08 |
| W27 | 338994.63 | 278650.00 | 14.07 |
| W28 | 338994.63 | 278650.00 | 14.06 |
| W29 | 338994.63 | 278650.00 | 14.05 |
| W30 | 338994.63 | 278650.00 | 14.04 |
| W31 | 338994.63 | 278650.00 | 14.03 |
| W32 | 338994.63 | 278650.00 | 14.02 |
| W33 | 338994.63 | 278650.00 | 14.01 |
| W34 | 338994.63 | 278650.00 | 14.00 |
| W35 | 338994.63 | 278650.00 | 13.99 |
| W36 | 338994.63 | 278650.00 | 13.98 |
| W37 | 338994.63 | 278650.00 | 13.97 |
| W38 | 338994.63 | 278650.00 | 13.96 |
| W39 | 338994.63 | 278650.00 | 13.95 |
| W40 | 338994.63 | 278650.00 | 13.94 |
| W41 | 338994.63 | 278650.00 | 13.93 |
| W42 | 338994.63 | 278650.00 | 13.92 |
| W43 | 338994.63 | 278650.00 | 13.91 |
| W44 | 338994.63 | 278650.00 | 13.90 |
| W45 | 338994.63 | 278650.00 | 13.89 |
| W46 | 338994.63 | 278650.00 | 13.88 |
| W47 | 338994.63 | 278650.00 | 13.87 |
| W48 | 338994.63 | 278650.00 | 13.86 |
| W49 | 338994.63 | 278650.00 | 13.85 |
| W50 | 338994.63 | 278650.00 | 13.84 |
| W51 | 338994.63 | 278650.00 | 13.83 |
| W52 | 338994.63 | 278650.00 | 13.82 |
| W53 | 338994.63 | 278650.00 | 13.81 |
| W54 | 338994.63 | 278650.00 | 13.80 |
| W55 | 338994.63 | 278650.00 | 13.79 |
| W56 | 338994.63 | 278650.00 | 13.78 |
| W57 | 338994.63 | 278650.00 | 13.77 |
| W58 | 338994.63 | 278650.00 | 13.76 |
| W59 | 338994.63 | 278650.00 | 13.75 |
| W60 | 338994.63 | 278650.00 | 13.74 |
| W61 | 338994.63 | 278650.00 | 13.73 |
| W62 | 338994.63 | 278650.00 | 13.72 |
| W63 | 338994.63 | 278650.00 | 13.71 |
| W64 | 338994.63 | 278650.00 | 13.70 |
| W65 | 338994.63 | 278650.00 | 13.69 |
| W66 | 338994.63 | 278650.00 | 13.68 |
| W67 | 338994.63 | 278650.00 | 13.67 |
| W68 | 338994.63 | 278650.00 | 13.66 |
| W69 | 338994.63 | 278650.00 | 13.65 |
| W70 | 338994.63 | 278650.00 | 13.64 |
| W71 | 338994.63 | 278650.00 | 13.63 |
| W72 | 338994.63 | 278650.00 | 13.62 |
| W73 | 338994.63 | 278650.00 | 13.61 |
| W74 | 338994.63 | 278650.00 | 13.60 |
| W75 | 338994.63 | 278650.00 | 13.59 |
| W76 | 338994.63 | 278650.00 | 13.58 |
| W77 | 338994.63 | 278650.00 | 13.57 |
| W78 | 338994.63 | 278650.00 | 13.56 |
| W79 | 338994.63 | 278650.00 | 13.55 |
| W80 | 338994.63 | 278650.00 | 13.54 |
| W81 | 338994.63 | 278650.00 | 13.53 |
| W82 | 338994.63 | 278650.00 | 13.52 |
| W83 | 338994.63 | 278650.00 | 13.51 |
| W84 | 338994.63 | 278650.00 | 13.50 |
| W85 | 338994.63 | 278650.00 | 13.49 |
| W86 | 338994.63 | 278650.00 | 13.48 |
| W87 | 338994.63 | 278650.00 | 13.47 |
| W88 | 338994.63 | 278650.00 | 13.46 |
| W89 | 338994.63 | 278650.00 | 13.45 |
| W90 | 338994.63 | 278650.00 | 13.44 |
| W91 | 338994.63 | 278650.00 | 13.43 |
| W92 | 338994.63 | 278650.00 | 13.42 |
| W93 | 338994.63 | 278650.00 | 13.41 |
| W94 | 338994.63 | 278650.00 | 13.40 |
| W95 | 338994.63 | 278650.00 | 13.39 |
| W96 | 338994.63 | 278650.00 | 13.38 |
| W97 | 338994.63 | 278650.00 | 13.37 |
| W98 | 338994.63 | 278650.00 | 13.36 |
| W99 | 338994.63 | 278650.00 | 13.35 |
| W100 | 338994.63 | 278650.00 | 13.34 |

STANDARD REFERENCE & ABBREVIATIONS

| | | | | | |
|----|-------|---------|----|-------|---------|
| AL | | Asphalt | AL | | Asphalt |
| AN | | Asphalt | AN | | Asphalt |
| AR | | Asphalt | AR | | Asphalt |
| AS | | Asphalt | AS | | Asphalt |
| AT | | Asphalt | AT | | Asphalt |
| AV | | Asphalt | AV | | Asphalt |
| AW | | Asphalt | AW | | Asphalt |
| AX | | Asphalt | AX | | Asphalt |
| AY | | Asphalt | AY | | Asphalt |
| AZ | | Asphalt | AZ | | Asphalt |
| BA | | Asphalt | BA | | Asphalt |
| BB | | Asphalt | BB | | Asphalt |
| BC | | Asphalt | BC | | Asphalt |
| BD | | Asphalt | BD | | Asphalt |
| BE | | Asphalt | BE | | Asphalt |
| BF | | Asphalt | BF | | Asphalt |
| BG | | Asphalt | BG | | Asphalt |
| BH | | Asphalt | BH | | Asphalt |
| BI | | Asphalt | BI | | Asphalt |
| BJ | | Asphalt | BJ | | Asphalt |
| BK | | Asphalt | BK | | Asphalt |
| BL | | Asphalt | BL | | Asphalt |
| BM | | Asphalt | BM | | Asphalt |
| BN | | Asphalt | BN | | Asphalt |
| BO | | Asphalt | BO | | Asphalt |
| BP | | Asphalt | BP | | Asphalt |
| BQ | | Asphalt | BQ | | Asphalt |
| BR | | Asphalt | BR | | Asphalt |
| BS | | Asphalt | BS | | Asphalt |
| BT | | Asphalt | BT | | Asphalt |
| BU | | Asphalt | BU | | Asphalt |
| BV | | Asphalt | BV | | Asphalt |
| BW | | Asphalt | BW | | Asphalt |
| BX | | Asphalt | BX | | Asphalt |
| BY | | Asphalt | BY | | Asphalt |
| BZ | | Asphalt | BZ | | Asphalt |
| CA | | Asphalt | CA | | Asphalt |
| CB | | Asphalt | CB | | Asphalt |
| CC | | Asphalt | CC | | Asphalt |
| CD | | Asphalt | CD | | Asphalt |
| CE | | Asphalt | CE | | Asphalt |
| CF | | Asphalt | CF | | Asphalt |
| CG | | Asphalt | CG | | Asphalt |
| CH | | Asphalt | CH | | Asphalt |
| CI | | Asphalt | CI | | Asphalt |
| CJ | | Asphalt | CJ | | Asphalt |
| CK | | Asphalt | CK | | Asphalt |
| CL | | Asphalt | CL | | Asphalt |
| CM | | Asphalt | CM | | Asphalt |
| CN | | Asphalt | CN | | Asphalt |
| CO | | Asphalt | CO | | Asphalt |
| CP | | Asphalt | CP | | Asphalt |
| CQ | | Asphalt | CQ | | Asphalt |
| CR | | Asphalt | CR | | Asphalt |
| CS | | Asphalt | CS | | Asphalt |
| CT | | Asphalt | CT | | Asphalt |
| CU | | Asphalt | CU | | Asphalt |
| CV | | Asphalt | CV | | Asphalt |
| CW | | Asphalt | CW | | Asphalt |
| CX | | Asphalt | CX | | Asphalt |
| CY | | Asphalt | CY | | Asphalt |
| CZ | | Asphalt | CZ | | Asphalt |
| DA | | Asphalt | DA | | Asphalt |
| DB | | Asphalt | DB | | Asphalt |
| DC | | Asphalt | DC | | Asphalt |
| DD | | Asphalt | DD | | Asphalt |
| DE | | Asphalt | DE | | Asphalt |
| DF | | Asphalt | DF | | Asphalt |
| DG | | Asphalt | DG | | Asphalt |
| DH | | Asphalt | DH | | Asphalt |
| DI | | Asphalt | DI | | Asphalt |
| DJ | | Asphalt | DJ | | Asphalt |
| DK | | Asphalt | DK | | Asphalt |
| DL | | Asphalt | DL | | Asphalt |
| DM | | Asphalt | DM | | Asphalt |
| DN | | Asphalt | DN | | Asphalt |
| DO | | Asphalt | DO | | Asphalt |
| DP | | Asphalt | DP | | Asphalt |
| DQ | | Asphalt | DQ | | Asphalt |
| DR | | Asphalt | DR | | Asphalt |
| DS | | Asphalt | DS | | Asphalt |
| DT | | Asphalt | DT | | Asphalt |
| DU | | Asphalt | DU | | Asphalt |
| DV | | Asphalt | DV | | Asphalt |
| DW | | Asphalt | DW | | Asphalt |
| DX | | Asphalt | DX | | Asphalt |
| DY | | Asphalt | DY | | Asphalt |
| DZ | | Asphalt | DZ | | Asphalt |
| EA | | Asphalt | EA | | Asphalt |
| EB | | Asphalt | EB | | Asphalt |
| EC | | Asphalt | EC | | Asphalt |
| ED | | Asphalt | ED | | Asphalt |
| EE | | Asphalt | EE | | Asphalt |
| EF | | Asphalt | EF | | Asphalt |
| EG | | Asphalt | EG | | Asphalt |
| EH | | Asphalt | EH | | Asphalt |
| EI | | Asphalt | EI | | Asphalt |
| EJ | | Asphalt | EJ | | Asphalt |
| EK | | Asphalt | EK | | Asphalt |
| EL | | Asphalt | EL | | Asphalt |
| EM | | Asphalt | EM | | Asphalt |
| EN | | Asphalt | EN | | Asphalt |
| EO | | Asphalt | EO | | Asphalt |
| EP | | Asphalt | EP | | Asphalt |
| EQ | | Asphalt | EQ | | Asphalt |
| ER | | Asphalt | ER | | Asphalt |
| ES | | Asphalt | ES | | Asphalt |
| ET | | Asphalt | ET | | Asphalt |
| EU | | Asphalt | EU | | Asphalt |
| EV | | Asphalt | EV | | Asphalt |
| EW | | Asphalt | EW | | Asphalt |
| EX | | Asphalt | EX | | Asphalt |
| EY | | Asphalt | EY | | Asphalt |
| EZ | | Asphalt | EZ | | Asphalt |
| FA | | Asphalt | FA | | Asphalt |
| FB | | Asphalt | FB | | Asphalt |
| FC | | Asphalt | FC | | Asphalt |
| FD | | Asphalt | FD | | Asphalt |
| FE | | Asphalt | FE | | Asphalt |
| FF | | Asphalt | FF | | Asphalt |
| FG | | Asphalt | FG | | Asphalt |
| FH | | Asphalt | FH | | Asphalt |
| FI | | Asphalt | FI | | Asphalt |
| FJ | | Asphalt | FJ | | Asphalt |
| FK | | Asphalt | FK | | Asphalt |
| FL | | Asphalt | FL | | Asphalt |
| FM | | Asphalt | FM | | Asphalt |
| FN | | Asphalt | FN | | Asphalt |
| FO | | Asphalt | FO | | Asphalt |
| FP | | Asphalt | FP | | Asphalt |
| FQ | | Asphalt | FQ | | Asphalt |
| FR | | Asphalt | FR | | Asphalt |
| FS | | Asphalt | FS | | Asphalt |
| FT | | Asphalt | FT | | Asphalt |
| FU | | Asphalt | FU | | Asphalt |
| FV | | Asphalt | FV | | Asphalt |
| FW | | Asphalt | FW | | Asphalt |
| FX | | Asphalt | FX | | Asphalt |
| FY | | Asphalt | FY | | Asphalt |
| FZ | | Asphalt | FZ | | Asphalt |
| GA | | Asphalt | GA | | Asphalt |
| GB | | Asphalt | GB | | Asphalt |
| GC | | Asphalt | GC | | Asphalt |
| GD | | Asphalt | GD | | Asphalt |
| GE | | Asphalt | GE | | Asphalt |
| GF | | Asphalt | GF | | Asphalt |
| GG | | Asphalt | GG | | Asphalt |
| GH | | Asphalt | GH | | Asphalt |
| GI | | Asphalt | GI | | Asphalt |
| GJ | | Asphalt | GJ | | |

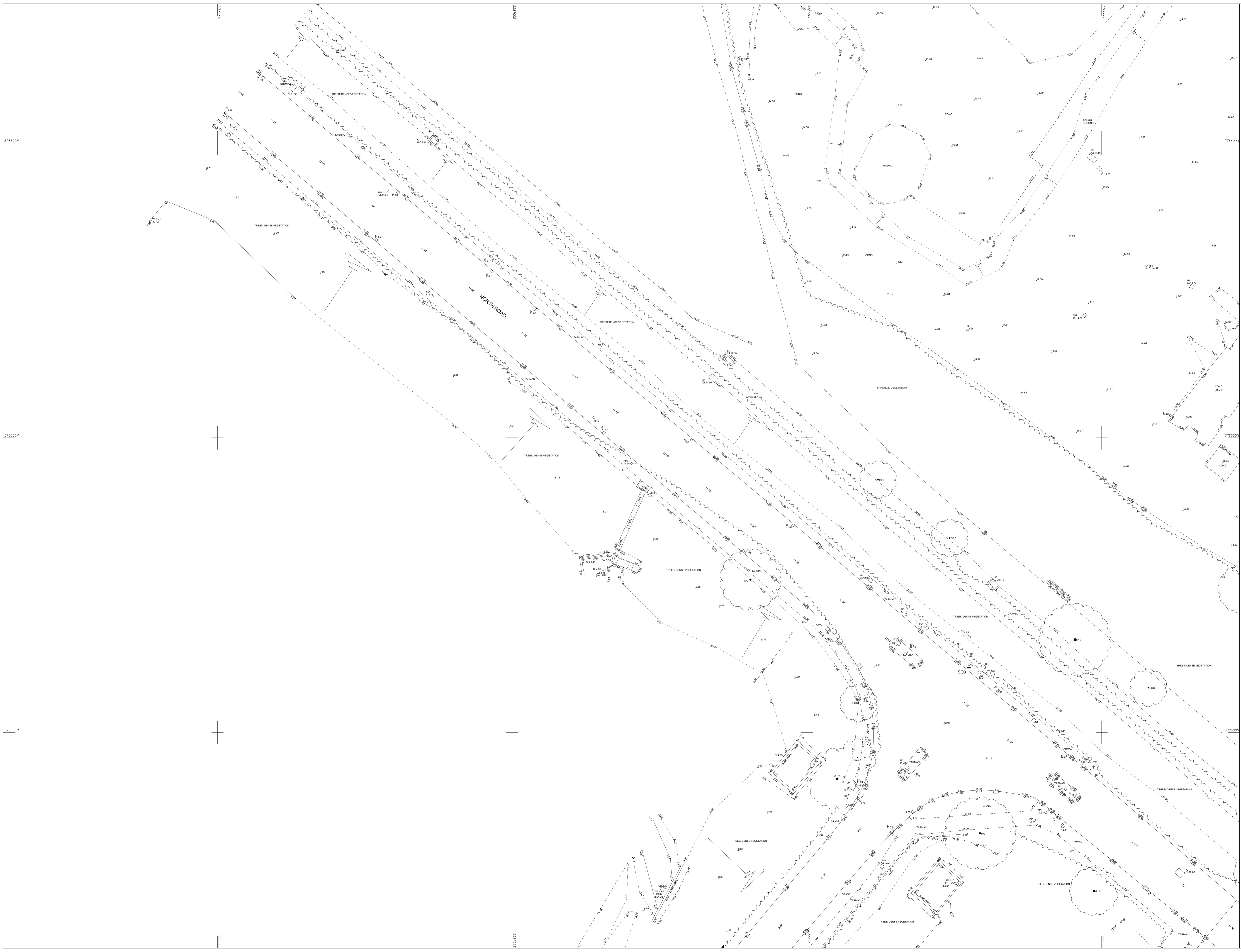


Note:
 The survey is plotted on a plane local
 Grid. Orientation to National Grid.
 All levels relate to Ordnance Datum,
 achieved using the
 OS National GPS Network.
 Survey Control Markers established for
 Mapping purposes only and should not be
 used for Construction without the written
 approval of Survey Operations Ltd.

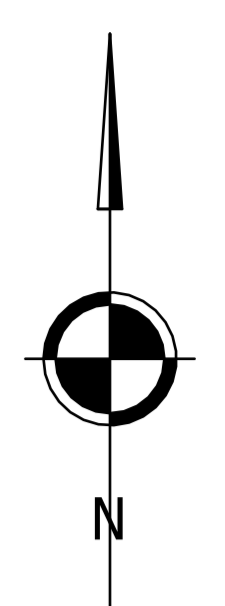
| Point | Easting | Northing | Height |
|-------|-----------|-----------|--------|
| S01 | 138646.93 | 278207.68 | 10.03 |
| S02 | 138699.43 | 278206.00 | 2.02 |
| S03 | 138864.18 | 278423.71 | 15.27 |
| S04 | 138864.18 | 278423.71 | 15.27 |
| S05 | 139011.23 | 278271.57 | 15.46 |
| S06 | 139011.23 | 278423.50 | 15.45 |
| S08 | 139000.04 | 278515.28 | 15.33 |
| W01 | 139002.05 | 278205.33 | 15.64 |
| W02 | 139000.04 | 278515.28 | 15.33 |
| W03 | 139100.17 | 278430.80 | 15.43 |
| W04 | 139002.05 | 278205.33 | 15.36 |
| W05 | 139014.00 | 278600.08 | 14.81 |
| W06 | 139002.05 | 278102.24 | 14.63 |
| W07 | 139000.04 | 278707.08 | 14.37 |
| W08 | 138999.08 | 278600.08 | 14.25 |
| W09 | 138854.63 | 278907.44 | 14.74 |
| W10 | 138854.63 | 278907.44 | 14.74 |
| W11 | 138812.62 | 278942.37 | 14.58 |
| W12 | 138712.62 | 278920.06 | 14.55 |
| W14 | 138742.25 | 278920.06 | 15.19 |
| W15 | 138712.62 | 278920.06 | 14.55 |
| W16 | 138740.31 | 278977.30 | 14.82 |

STANDARD REFERENCE & ABBREVIATIONS

| | | | |
|----|---------------------|----|------------------|
| AB | Abundant Bush | SL | Short Level |
| AD | Asphalt Drive | SP | Short Pipe |
| AE | Asphalt Fence | SR | Short Run |
| AF | Asphalt Footpath | SS | Short Street |
| AG | Asphalt Gutter | ST | Short Trench |
| AH | Asphalt Hinge | TA | Terrace |
| AI | Asphalt Inlet | TB | Terrace Boundary |
| AL | Asphalt Lane | TC | Terrace Concrete |
| AM | Asphalt Mound | TD | Terrace Drain |
| AN | Asphalt Niche | TE | Terrace Edge |
| AO | Asphalt Oval | TF | Terrace Filling |
| AP | Asphalt Path | TH | Thatch |
| AQ | Asphalt Pavement | TI | Terrace Iron |
| AR | Asphalt Ramp | TJ | Terrace Junction |
| AS | Asphalt Road | TK | Terrace Kerb |
| AT | Asphalt Tarmac | TL | Terrace Level |
| AV | Asphalt Tarmac Area | TM | Terrace Mound |
| AW | Asphalt Tarmac Area | TO | Terrace Overlap |
| AX | Asphalt Tarmac Area | TP | Terrace Paving |
| AY | Asphalt Tarmac Area | TR | Terrace Railing |
| AZ | Asphalt Tarmac Area | TS | Terrace Siding |
| BA | Asphalt Tarmac Area | TT | Terrace Tiling |
| BB | Asphalt Tarmac Area | TU | Terrace Trench |
| BC | Asphalt Tarmac Area | TV | Terrace Trench |
| BD | Asphalt Tarmac Area | TW | Terrace Wall |
| BE | Asphalt Tarmac Area | TX | Terrace Wall |
| BF | Asphalt Tarmac Area | TY | Terrace Wall |
| BG | Asphalt Tarmac Area | TZ | Terrace Wall |
| BH | Asphalt Tarmac Area | UA | Unfinished Area |
| BI | Asphalt Tarmac Area | UB | Unfinished Area |
| BJ | Asphalt Tarmac Area | UC | Unfinished Area |
| BK | Asphalt Tarmac Area | UD | Unfinished Area |
| BL | Asphalt Tarmac Area | UE | Unfinished Area |
| BM | Asphalt Tarmac Area | UF | Unfinished Area |
| BN | Asphalt Tarmac Area | UG | Unfinished Area |
| BO | Asphalt Tarmac Area | UH | Unfinished Area |
| BP | Asphalt Tarmac Area | UI | Unfinished Area |
| BQ | Asphalt Tarmac Area | UJ | Unfinished Area |
| BR | Asphalt Tarmac Area | UK | Unfinished Area |
| BS | Asphalt Tarmac Area | UL | Unfinished Area |
| BT | Asphalt Tarmac Area | UM | Unfinished Area |
| BU | Asphalt Tarmac Area | UN | Unfinished Area |
| BV | Asphalt Tarmac Area | UO | Unfinished Area |
| BW | Asphalt Tarmac Area | UP | Unfinished Area |
| BX | Asphalt Tarmac Area | UQ | Unfinished Area |
| BY | Asphalt Tarmac Area | UR | Unfinished Area |
| BZ | Asphalt Tarmac Area | US | Unfinished Area |
| CA | Asphalt Tarmac Area | UT | Unfinished Area |
| CB | Asphalt Tarmac Area | UU | Unfinished Area |
| CC | Asphalt Tarmac Area | UV | Unfinished Area |
| CD | Asphalt Tarmac Area | UW | Unfinished Area |
| CE | Asphalt Tarmac Area | UX | Unfinished Area |
| CF | Asphalt Tarmac Area | UY | Unfinished Area |
| CG | Asphalt Tarmac Area | UZ | Unfinished Area |
| CH | Asphalt Tarmac Area | VA | Unfinished Area |
| CI | Asphalt Tarmac Area | VB | Unfinished Area |
| CJ | Asphalt Tarmac Area | VC | Unfinished Area |
| CK | Asphalt Tarmac Area | VD | Unfinished Area |
| CL | Asphalt Tarmac Area | VE | Unfinished Area |
| CM | Asphalt Tarmac Area | VF | Unfinished Area |
| CN | Asphalt Tarmac Area | VG | Unfinished Area |
| CO | Asphalt Tarmac Area | VH | Unfinished Area |
| CP | Asphalt Tarmac Area | VI | Unfinished Area |
| CQ | Asphalt Tarmac Area | VJ | Unfinished Area |
| CR | Asphalt Tarmac Area | VK | Unfinished Area |
| CS | Asphalt Tarmac Area | VL | Unfinished Area |
| CT | Asphalt Tarmac Area | VM | Unfinished Area |
| CU | Asphalt Tarmac Area | VN | Unfinished Area |
| CV | Asphalt Tarmac Area | VO | Unfinished Area |
| CW | Asphalt Tarmac Area | VP | Unfinished Area |
| CX | Asphalt Tarmac Area | VQ | Unfinished Area |
| CY | Asphalt Tarmac Area | VR | Unfinished Area |
| CZ | Asphalt Tarmac Area | VS | Unfinished Area |
| DA | Asphalt Tarmac Area | VT | Unfinished Area |
| DB | Asphalt Tarmac Area | VO | Unfinished Area |
| DC | Asphalt Tarmac Area | VP | Unfinished Area |
| DD | Asphalt Tarmac Area | VQ | Unfinished Area |
| DE | Asphalt Tarmac Area | VR | Unfinished Area |
| DF | Asphalt Tarmac Area | VS | Unfinished Area |
| DG | Asphalt Tarmac Area | VT | Unfinished Area |
| DH | Asphalt Tarmac Area | VO | Unfinished Area |
| DI | Asphalt Tarmac Area | VP | Unfinished Area |
| DJ | Asphalt Tarmac Area | VQ | Unfinished Area |
| DK | Asphalt Tarmac Area | VR | Unfinished Area |
| DL | Asphalt Tarmac Area | VS | Unfinished Area |
| DM | Asphalt Tarmac Area | VT | Unfinished Area |
| DN | Asphalt Tarmac Area | VO | Unfinished Area |
| DO | Asphalt Tarmac Area | VP | Unfinished Area |
| DP | Asphalt Tarmac Area | VQ | Unfinished Area |
| DQ | Asphalt Tarmac Area | VR | Unfinished Area |
| DR | Asphalt Tarmac Area | VS | Unfinished Area |
| DS | Asphalt Tarmac Area | VT | Unfinished Area |
| DT | Asphalt Tarmac Area | VO | Unfinished Area |
| DU | Asphalt Tarmac Area | VP | Unfinished Area |
| DV | Asphalt Tarmac Area | VQ | Unfinished Area |
| DW | Asphalt Tarmac Area | VR | Unfinished Area |
| DX | Asphalt Tarmac Area | VS | Unfinished Area |
| DY | Asphalt Tarmac Area | VT | Unfinished Area |
| DZ | Asphalt Tarmac Area | VO | Unfinished Area |
| EA | Asphalt Tarmac Area | VP | Unfinished Area |
| EB | Asphalt Tarmac Area | VQ | Unfinished Area |
| EC | Asphalt Tarmac Area | VR | Unfinished Area |
| ED | Asphalt Tarmac Area | VS | Unfinished Area |
| EE | Asphalt Tarmac Area | VT | Unfinished Area |
| EF | Asphalt Tarmac Area | VO | Unfinished Area |
| EG | Asphalt Tarmac Area | VP | Unfinished Area |
| EH | Asphalt Tarmac Area | VQ | Unfinished Area |
| EI | Asphalt Tarmac Area | VR | Unfinished Area |
| EJ | Asphalt Tarmac Area | VS | Unfinished Area |
| EK | Asphalt Tarmac Area | VT | Unfinished Area |
| EL | Asphalt Tarmac Area | VO | Unfinished Area |
| EM | Asphalt Tarmac Area | VP | Unfinished Area |
| EN | Asphalt Tarmac Area | VQ | Unfinished Area |
| EO | Asphalt Tarmac Area | VR | Unfinished Area |
| EP | Asphalt Tarmac Area | VS | Unfinished Area |
| EQ | Asphalt Tarmac Area | VT | Unfinished Area |
| ER | Asphalt Tarmac Area | VO | Unfinished Area |
| ES | Asphalt Tarmac Area | VP | Unfinished Area |
| ET | Asphalt Tarmac Area | VQ | Unfinished Area |
| EU | Asphalt Tarmac Area | VR | Unfinished Area |
| EV | Asphalt Tarmac Area | VS | Unfinished Area |
| EW | Asphalt Tarmac Area | VT | Unfinished Area |
| EX | Asphalt Tarmac Area | VO | Unfinished Area |
| EY | Asphalt Tarmac Area | VP | Unfinished Area |
| EZ | Asphalt Tarmac Area | VQ | Unfinished Area |
| FA | Asphalt Tarmac Area | VR | Unfinished Area |
| FB | Asphalt Tarmac Area | VS | Unfinished Area |
| FC | Asphalt Tarmac Area | VT | Unfinished Area |
| FD | Asphalt Tarmac Area | VO | Unfinished Area |
| FE | Asphalt Tarmac Area | VP | Unfinished Area |
| FF | Asphalt Tarmac Area | VQ | Unfinished Area |
| FG | Asphalt Tarmac Area | VR | Unfinished Area |
| FH | Asphalt Tarmac Area | VS | Unfinished Area |
| FI | Asphalt Tarmac Area | VT | Unfinished Area |
| FJ | Asphalt Tarmac Area | VO | Unfinished Area |
| FK | Asphalt Tarmac Area | VP | Unfinished Area |
| FL | Asphalt Tarmac Area | VQ | Unfinished Area |
| FM | Asphalt Tarmac Area | VR | Unfinished Area |
| FN | Asphalt Tarmac Area | VS | Unfinished Area |
| FO | Asphalt Tarmac Area | VT | Unfinished Area |
| FP | Asphalt Tarmac Area | VO | Unfinished Area |
| FQ | Asphalt Tarmac Area | VP | Unfinished Area |
| FR | Asphalt Tarmac Area | VQ | Unfinished Area |
| FS | Asphalt Tarmac Area | VR | Unfinished Area |
| FT | Asphalt Tarmac Area | VS | Unfinished Area |
| FU | Asphalt Tarmac Area | VT | Unfinished Area |
| FV | Asphalt Tarmac Area | VO | Unfinished Area |
| FW | Asphalt Tarmac Area | VP | Unfinished Area |
| FX | Asphalt Tarmac Area | VQ | Unfinished Area |
| FY | Asphalt Tarmac Area | VR | Unfinished Area |
| FZ | Asphalt Tarmac Area | VS | Unfinished Area |
| GA | Asphalt Tarmac Area | VT | Unfinished Area |
| GB | Asphalt Tarmac Area | VO | Unfinished Area |
| GC | Asphalt Tarmac Area | VP | Unfinished Area |
| GD | Asphalt Tarmac Area | VQ | Unfinished Area |
| GE | Asphalt Tarmac Area | VR | Unfinished Area |
| GF | Asphalt Tarmac Area | VS | Unfinished Area |
| GG | Asphalt Tarmac Area | VT | Unfinished Area |
| GH | Asphalt Tarmac Area | VO | Unfinished Area |
| GI | Asphalt Tarmac Area | VP | Unfinished Area |
| GO | Asphalt Tarmac Area | VQ | Unfinished Area |
| GP | Asphalt Tarmac Area | VR | Unfinished Area |
| GQ | Asphalt Tarmac Area | VS | Unfinished Area |
| GR | Asphalt Tarmac Area | VT | Unfinished Area |
| GS | Asphalt Tarmac Area | VO | Unfinished Area |
| GT | Asphalt Tarmac Area | VP | Unfinished Area |
| GU | Asphalt Tarmac Area | VQ | Unfinished Area |
| GV | Asphalt Tarmac Area | VR | Unfinished Area |
| GW | Asphalt Tarmac Area | VS | Unfinished Area |
| GX | Asphalt Tarmac Area | VT | Unfinished Area |
| GY | Asphalt Tarmac Area | VO | Unfinished Area |
| GZ | Asphalt Tarmac Area | VP | Unfinished Area |
| HA | Asphalt Tarmac Area | VQ | Unfinished Area |
| HB | Asphalt Tarmac Area | VR | Unfinished Area |
| HC | Asphalt Tarmac Area | VS | Unfinished Area |
| HD | Asphalt Tarmac Area | VT | Unfinished Area |
| HE | Asphalt Tarmac Area | VO | Unfinished Area |
| HF | Asphalt Tarmac Area | VP | Unfinished Area |
| HG | Asphalt Tarmac Area | VQ | Unfinished Area |
| HH | Asphalt Tarmac Area | VR | Unfinished Area |
| HI | Asphalt Tarmac Area | VS | Unfinished Area |
| HJ | Asphalt Tarmac Area | VT | Unfinished Area |
| HK | Asphalt Tarmac Area | VO | Unfinished Area |
| HL | Asphalt Tarmac Area | VP | Unfinished Area |
| HM | Asphalt Tarmac Area | VQ | Unfinished Area |
| HN | Asphalt Tarmac Area | VR | Unfinished Area |
| HO | Asphalt Tarmac Area | VS | Unfinished Area |
| HP | Asphalt Tarmac Area | VT | Unfinished Area |
| HQ | Asphalt Tarmac Area | VO | Unfinished Area |
| HR | Asphalt Tarmac Area | VP | Unfinished Area |
| HS | Asphalt Tarmac Area | VQ | Unfinished Area |
| HT | Asphalt Tarmac Area | VR | Unfinished Area |
| HU | Asphalt Tarmac Area | VS | Unfinished Area |
| HV | Asphalt Tarmac Area | VT | Unfinished Area |
| HW | Asphalt Tarmac Area | VO | Unfinished Area |
| HX | Asphalt Tarmac Area | VP | Unfinished Area |
| HY | Asphalt Tarmac Area | VQ | Unfinished Area |
| HZ | Asphalt Tarmac Area | VR | Unfinished Area |
| IA | Asphalt Tarmac Area | VS | Unfinished Area |
| IB | Asphalt Tarmac Area | VT | Unfinished Area |
| IC | Asphalt Tarmac Area | VO | Unfinished Area |
| ID | Asphalt Tarmac Area | VP | Unfinished Area |
| IE | Asphalt Tarmac Area | VQ | Unfinished Area |
| IF | Asphalt Tarmac Area | VR | Unfinished Area |
| IG | Asphalt Tarmac Area | VS | Unfinished Area |
| IH | Asphalt Tarmac Area | VT | Unfinished Area |
| II | Asphalt Tarmac Area | VO | Unfinished Area |
| IJ | Asphalt Tarmac Area | VP | Unfinished Area |
| IK | Asphalt Tarmac Area | VQ | Unfinished Area |
| IL | Asphalt Tarmac Area | VR | Unfinished Area |
| IM | Asphalt Tarmac Area | VS | Unfinished Area |
| IN | Asphalt Tarmac Area | VT | Unfinished Area |
| IO | Asphalt Tarmac Area | VO | Unfinished Area |
| IP | Asphalt Tarmac Area | VP | Unfinished Area |
| IQ | Asphalt Tarmac Area | VQ | Unfinished Area |
| IR | Asphalt Tarmac Area | VR | Unfinished Area |
| IS | Asphalt Tarmac Area | VS | Unfinished Area |
| IT | Asphalt Tarmac Area | VT | Unfinished Area |
| IU | Asphalt Tarmac Area | VO | Unfinished Area |
| IV | Asphalt Tarmac Area | VP | Unfinished Area |
| IW | Asphalt Tarmac Area | VQ | Unfinished Area |
| IX | Asphalt Tarmac Area | VR | Unfinished Area |
| IY | Asphalt Tarmac Area | VS | Unfinished Area |
| IZ | Asphalt Tarmac Area | VT | Unfinished Area |
| JA | Asphalt Tarmac Area | VO | Unfinished Area |
| JB | Asphalt Tarmac Area | VP | Unfinished Area |
| JC | Asphalt Tarmac Area | VQ | Unfinished Area |
| JD | Asphalt Tarmac Area | VR | Unfinished Area |
| JE | Asphalt Tarmac Area | VS | Unfinished Area |
| JF | Asphalt Tarmac Area | VT | Unfinished Area |
| JG | Asphalt Tarmac Area | VO | Unfinished Area |
| JH | Asphalt Tarmac Area | VP | Unfinished Area |
| JI | Asphalt Tarmac Area | VQ | Unfinished Area |
| JJ | Asphalt Tarmac Area | VR | Unfinished Area |
| JK | Asphalt Tarmac Area | VS | Unfinished Area |
| JL | Asphalt Tarmac Area | VT | Unfinished Area |
| JM | Asphalt Tarmac Area | VO | Unfinished Area |
| JN | Asphalt Tarmac Area | VP | Unfinished Area |
| JO | Asphalt Tarmac Area | VQ | Unfinished Area |
| JP | Asphalt Tarmac Area | VR | Unfinished Area |
| JQ | Asphalt Tarmac Area | VS | Unfinished Area |
| JR | Asphalt Tarmac Area | VT | Unfinished Area |
| JS | Asphalt Tarmac Area | VO | Unfinished Area |
| JT | Asphalt Tarmac Area | VP | Unfinished Area |
| JU | Asphalt Tarmac Area | VQ | Unfinished Area |
| JV | Asphalt Tarmac Area | VR | Unfinished Area |
| JW | Asphalt Tarmac Area | VS | Unfinished Area |
| JX | Asphalt Tarmac Area | VT | Unfinished Area |
| JY | Asphalt Tarmac Area | VO | Unfinished Area |
| JZ | Asphalt Tarmac Area | VP | Unfinished Area |
| KA | Asphalt Tarmac Area | VQ | Unfinished Area |
| KB | Asphalt Tarmac Area | VR | Unfinished Area |
| KC | Asphalt Tarmac Area | VS | Unfinished Area |
| KD | Asphalt Tarmac Area | VT | Unfinished Area |
| KE | Asphalt Tarmac Area | VO | Unfinished Area |
| KF | Asphalt Tarmac Area | VP | Unfinished Area |
| KG | Asphalt Tarmac Area | VQ | Unfinished Area |
| KH | Asphalt Tarmac Area | VR | Unfinished Area |
| KI | Asphalt Tarmac Area | VS | Unfinished Area |
| KJ | Asphalt Tarmac Area | VT | Unfinished Area |
| KK | Asphalt Tarmac Area | VO | Unfinished Area |
| KL | Asphalt Tarmac Area | VP | Unfinished Area |
| KM | Asphalt Tarmac Area | VQ | Unfinished Area |
| KN | Asphalt Tarmac Area | VR | Unfinished Area |
| KO | Asphalt Tarmac Area | VS | Unfinished Area |
| KP | Asphalt Tarmac Area | VT | Unfinished Area |
| KQ | Asphalt Tarmac Area | VO | Unfinished Area |
| KR | Asphalt Tarmac Area | VP | Unfinished Area |
| KS | Asphalt Tarmac Area | VQ | Unfinished Area |
| KT | Asphalt Tarmac Area | VR | Unfinished Area |
| KU | Asphalt Tarmac Area | VS | Unfinished Area |
| KV | Asphalt Tarmac Area | VT | Unfinished Area |
| KW | Asphalt Tarmac Area | VO | Unfinished Area |
| KX | Asphalt Tarmac Area | VP | Unfinished Area |
| KY | Asphalt Tarmac Area | VQ | Unfinished Area |
| KZ | Asphalt Tarmac Area | VR | Unfinished Area |
| LA | Asphalt Tarmac Area | VS | Unfinished Area |
| LB | Asphalt Tarmac Area | VT | Unfinished Area |
| | | | |



© Survey Operations Limited 2021
 Reproduction in whole or in part by any means is prohibited without the prior permission of Survey Operations Limited.



Note:
 The survey is plotted on a plane local Grid. Orientation to National Grid.
 All levels relate to Ordnance Datum, achieved using the OS National GPS Network.
 Survey Control Markers established for Mapping purposes only and should not be used for Construction without the written approval of Survey Operations Ltd.

| Point | Easting | Northing | Height |
|-------|-----------|-----------|--------|
| S01 | 338646.93 | 278207.68 | 10.03 |
| S02 | 338699.63 | 278206.00 | 9.22 |
| S03 | 338664.18 | 278223.71 | 15.27 |
| S04 | 338664.18 | 278223.71 | 15.28 |
| S05 | 339011.23 | 278221.57 | 15.46 |
| S06 | 339011.23 | 278221.57 | 15.45 |
| S08 | 339000.04 | 278215.28 | 15.33 |
| M01 | 339022.85 | 278210.33 | 15.64 |
| M02 | 339100.17 | 278430.80 | 15.43 |
| M03 | 339022.85 | 278210.33 | 15.36 |
| M04 | 339014.00 | 278600.08 | 14.81 |
| M05 | 339022.85 | 278210.33 | 14.63 |
| M07 | 338995.18 | 278210.33 | 14.37 |
| M08 | 338995.18 | 278210.33 | 14.32 |
| M10 | 338854.63 | 278921.44 | 14.74 |
| M11 | 338854.63 | 278921.44 | 14.71 |
| M12 | 338812.62 | 278942.37 | 14.58 |
| M13 | 338782.25 | 278920.08 | 14.55 |
| M14 | 338782.25 | 278920.08 | 15.19 |
| M15 | 338782.25 | 278920.08 | 14.22 |
| M16 | 338740.31 | 278877.30 | 14.82 |

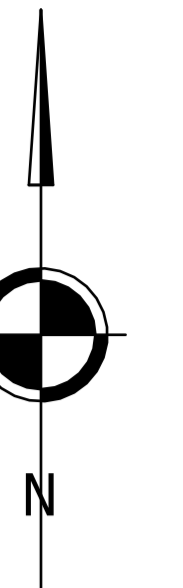
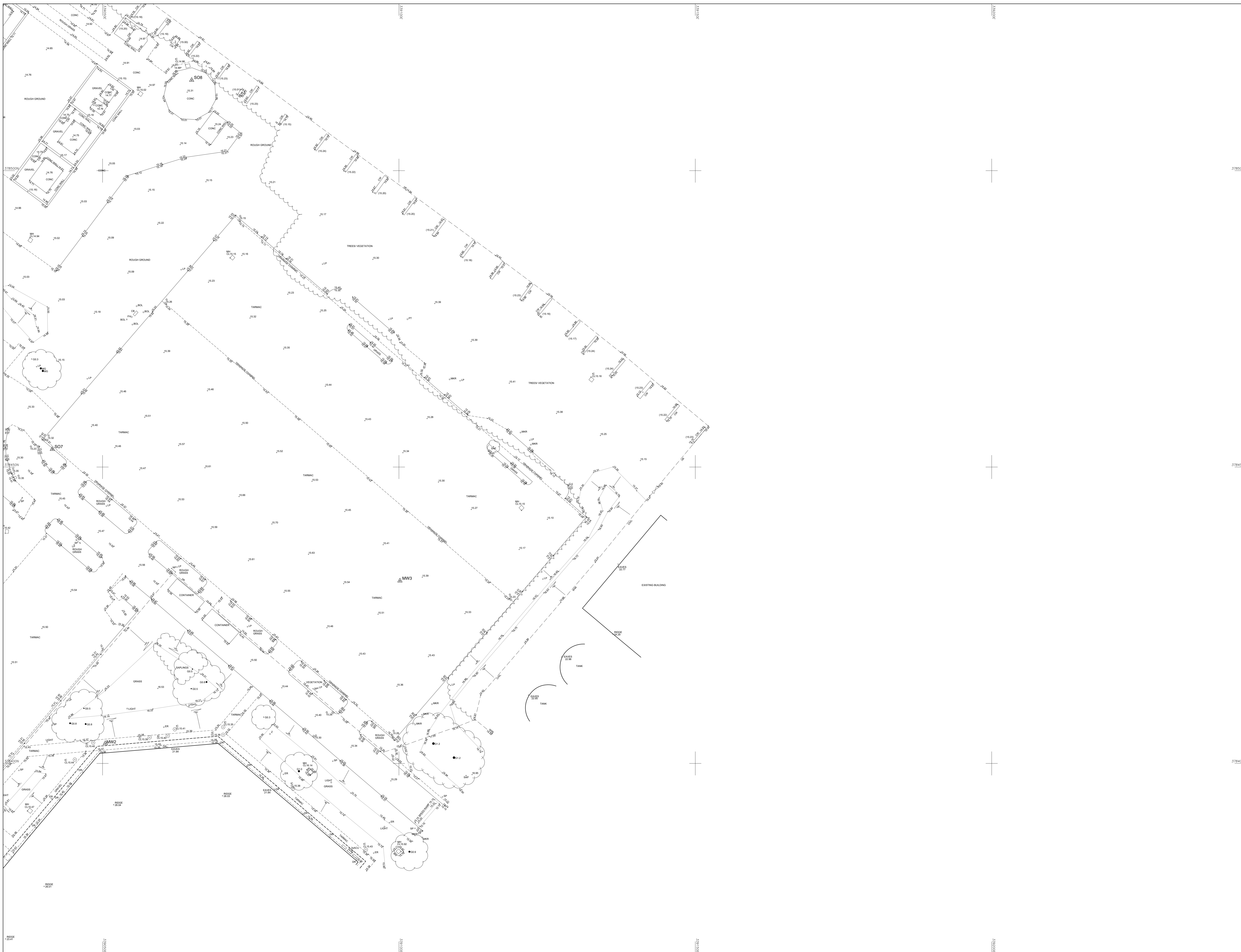
STANDARD REFERENCE & ABBREVIATIONS

| | | | |
|----|-----------------|----|-----------------|
| AD | Asphalt Drive | SL | Short Level |
| AL | Asphalt Lane | SP | Short Pipe |
| AR | Asphalt Road | SR | Short Run |
| AS | Asphalt Surface | SS | Short Street |
| AW | Asphalt Way | ST | Short Street |
| BA | Block Wall | TA | Tarmac |
| BC | Block Wall | TB | Tarmac Block |
| BD | Block Wall | TC | Tarmac Concrete |
| BE | Block Wall | TD | Tarmac Driveway |
| BF | Block Wall | TE | Tarmac Edge |
| BH | Block Wall | TF | Tarmac Finish |
| BI | Block Wall | TH | Tarmac Hole |
| BJ | Block Wall | TI | Tarmac Inlet |
| BK | Block Wall | TJ | Tarmac Junction |
| BL | Block Wall | TK | Tarmac Kerb |
| BM | Block Wall | TL | Tarmac Lane |
| BN | Block Wall | TM | Tarmac Mark |
| BO | Block Wall | TN | Tarmac Note |
| BP | Block Wall | TO | Tarmac Offset |
| BQ | Block Wall | TP | Tarmac Patch |
| BR | Block Wall | TR | Tarmac Ridge |
| BS | Block Wall | TS | Tarmac Slope |
| BT | Block Wall | TU | Tarmac Turn |
| BU | Block Wall | TV | Tarmac Valley |
| BV | Block Wall | TW | Tarmac Wall |
| BW | Block Wall | TX | Tarmac Width |
| BX | Block Wall | TY | Tarmac Yoke |
| BY | Block Wall | TZ | Tarmac Zone |
| BZ | Block Wall | U0 | Unknown |

| |
|----------|
| 1 |
| 2 3 |
| 5 6 4 |
| 8 9 7 |
| 11 12 10 |

Survey OPERATIONS
 Smith Street, Skelmersdale, Lancs. WN8 8LN
 Tel: 01695 725662 Fax: 01695 51816
 Email: mail@survops.co.uk - www.survops.co.uk

| | |
|------------------------------------|--|
| Client | Shepherd Gilmour |
| Drawing Title | Topographical Survey of Land at: Port Cheshire Ellesmere Port Sheet 8 of 12 |
| Scale(s) | 1:200 Survey CA/MW |
| Date | Jan 21 Drawn DIF |
| Job Number | 20K288 Checked SO |
| Sheet Size & Drg Number & Revision | A0 20K288/008 |



Note:
 The survey is plotted on a plane local Grid. Orientation to National Grid. All levels relate to Ordnance Datum, achieved using the OS National GPS Network. Survey Control Markers established for Mapping purposes only and should not be used for Construction without the written approval of Survey Operations Ltd.

| Point | Easting | Northing | Height |
|-------|-----------|-----------|--------|
| S01 | 138646.93 | 278207.68 | 10.03 |
| S02 | 138699.63 | 278206.00 | 9.20 |
| S03 | 138646.18 | 278223.71 | 15.27 |
| S04 | 138646.18 | 278223.71 | 15.27 |
| S05 | 138611.23 | 278211.57 | 15.46 |
| S06 | 138611.23 | 278211.57 | 15.46 |
| S07 | 138646.18 | 278206.00 | 9.20 |
| S08 | 138646.18 | 278206.00 | 9.20 |
| M01 | 138646.18 | 278206.00 | 9.20 |
| M02 | 138646.18 | 278206.00 | 9.20 |
| M03 | 138646.18 | 278206.00 | 9.20 |
| M04 | 138646.18 | 278206.00 | 9.20 |
| M05 | 138646.18 | 278206.00 | 9.20 |
| M06 | 138646.18 | 278206.00 | 9.20 |
| M07 | 138646.18 | 278206.00 | 9.20 |
| M08 | 138646.18 | 278206.00 | 9.20 |
| M09 | 138646.18 | 278206.00 | 9.20 |
| M10 | 138646.18 | 278206.00 | 9.20 |
| M11 | 138646.18 | 278206.00 | 9.20 |
| M12 | 138646.18 | 278206.00 | 9.20 |
| M13 | 138646.18 | 278206.00 | 9.20 |
| M14 | 138646.18 | 278206.00 | 9.20 |
| M15 | 138646.18 | 278206.00 | 9.20 |
| M16 | 138646.18 | 278206.00 | 9.20 |

STANDARD REFERENCE & ABBREVIATIONS

| | | | |
|----|------------------|------|--------------|
| AB | Abundant Bush | SL | Street Level |
| AD | Asphalt Drive | SP | Spot Height |
| AE | Asphalt Edge | SR | Survey Range |
| AF | Asphalt Foot | SS | Street Sign |
| AG | Asphalt Gravel | ST | Street |
| AH | Asphalt Hinge | SV | Street View |
| AI | Asphalt Inlet | SW | Street Wall |
| AJ | Asphalt Junction | SY | Street Yards |
| AK | Asphalt Kerb | SZ | Street Zone |
| AL | Asphalt Lane | T1 | Terrace 1 |
| AM | Asphalt Main | T2 | Terrace 2 |
| AN | Asphalt Nook | T3 | Terrace 3 |
| AO | Asphalt Oval | T4 | Terrace 4 |
| AP | Asphalt Path | T5 | Terrace 5 |
| AQ | Asphalt Quay | T6 | Terrace 6 |
| AR | Asphalt Ramp | T7 | Terrace 7 |
| AS | Asphalt Road | T8 | Terrace 8 |
| AT | Asphalt Tarmac | T9 | Terrace 9 |
| AU | Asphalt Upramp | T10 | Terrace 10 |
| AV | Asphalt Vane | T11 | Terrace 11 |
| AW | Asphalt Wall | T12 | Terrace 12 |
| AX | Asphalt Walk | T13 | Terrace 13 |
| AY | Asphalt Yard | T14 | Terrace 14 |
| AZ | Asphalt Zone | T15 | Terrace 15 |
| BA | Asphalt Bank | T16 | Terrace 16 |
| BB | Asphalt Bank | T17 | Terrace 17 |
| BC | Asphalt Bank | T18 | Terrace 18 |
| BD | Asphalt Bank | T19 | Terrace 19 |
| BE | Asphalt Bank | T20 | Terrace 20 |
| BF | Asphalt Bank | T21 | Terrace 21 |
| BG | Asphalt Bank | T22 | Terrace 22 |
| BH | Asphalt Bank | T23 | Terrace 23 |
| BI | Asphalt Bank | T24 | Terrace 24 |
| BJ | Asphalt Bank | T25 | Terrace 25 |
| BK | Asphalt Bank | T26 | Terrace 26 |
| BL | Asphalt Bank | T27 | Terrace 27 |
| BM | Asphalt Bank | T28 | Terrace 28 |
| BN | Asphalt Bank | T29 | Terrace 29 |
| BO | Asphalt Bank | T30 | Terrace 30 |
| BP | Asphalt Bank | T31 | Terrace 31 |
| BQ | Asphalt Bank | T32 | Terrace 32 |
| BR | Asphalt Bank | T33 | Terrace 33 |
| BS | Asphalt Bank | T34 | Terrace 34 |
| BT | Asphalt Bank | T35 | Terrace 35 |
| BU | Asphalt Bank | T36 | Terrace 36 |
| BV | Asphalt Bank | T37 | Terrace 37 |
| BW | Asphalt Bank | T38 | Terrace 38 |
| BX | Asphalt Bank | T39 | Terrace 39 |
| BY | Asphalt Bank | T40 | Terrace 40 |
| BZ | Asphalt Bank | T41 | Terrace 41 |
| CA | Asphalt Bank | T42 | Terrace 42 |
| CB | Asphalt Bank | T43 | Terrace 43 |
| CC | Asphalt Bank | T44 | Terrace 44 |
| CD | Asphalt Bank | T45 | Terrace 45 |
| CE | Asphalt Bank | T46 | Terrace 46 |
| CF | Asphalt Bank | T47 | Terrace 47 |
| CG | Asphalt Bank | T48 | Terrace 48 |
| CH | Asphalt Bank | T49 | Terrace 49 |
| CI | Asphalt Bank | T50 | Terrace 50 |
| CJ | Asphalt Bank | T51 | Terrace 51 |
| CK | Asphalt Bank | T52 | Terrace 52 |
| CL | Asphalt Bank | T53 | Terrace 53 |
| CM | Asphalt Bank | T54 | Terrace 54 |
| CN | Asphalt Bank | T55 | Terrace 55 |
| CO | Asphalt Bank | T56 | Terrace 56 |
| CP | Asphalt Bank | T57 | Terrace 57 |
| CQ | Asphalt Bank | T58 | Terrace 58 |
| CR | Asphalt Bank | T59 | Terrace 59 |
| CS | Asphalt Bank | T60 | Terrace 60 |
| CT | Asphalt Bank | T61 | Terrace 61 |
| CU | Asphalt Bank | T62 | Terrace 62 |
| CV | Asphalt Bank | T63 | Terrace 63 |
| CW | Asphalt Bank | T64 | Terrace 64 |
| CX | Asphalt Bank | T65 | Terrace 65 |
| CY | Asphalt Bank | T66 | Terrace 66 |
| CZ | Asphalt Bank | T67 | Terrace 67 |
| DA | Asphalt Bank | T68 | Terrace 68 |
| DB | Asphalt Bank | T69 | Terrace 69 |
| DC | Asphalt Bank | T70 | Terrace 70 |
| DD | Asphalt Bank | T71 | Terrace 71 |
| DE | Asphalt Bank | T72 | Terrace 72 |
| DF | Asphalt Bank | T73 | Terrace 73 |
| DG | Asphalt Bank | T74 | Terrace 74 |
| DH | Asphalt Bank | T75 | Terrace 75 |
| DI | Asphalt Bank | T76 | Terrace 76 |
| DJ | Asphalt Bank | T77 | Terrace 77 |
| DK | Asphalt Bank | T78 | Terrace 78 |
| DL | Asphalt Bank | T79 | Terrace 79 |
| DM | Asphalt Bank | T80 | Terrace 80 |
| DN | Asphalt Bank | T81 | Terrace 81 |
| DO | Asphalt Bank | T82 | Terrace 82 |
| DP | Asphalt Bank | T83 | Terrace 83 |
| DQ | Asphalt Bank | T84 | Terrace 84 |
| DR | Asphalt Bank | T85 | Terrace 85 |
| DS | Asphalt Bank | T86 | Terrace 86 |
| DT | Asphalt Bank | T87 | Terrace 87 |
| DU | Asphalt Bank | T88 | Terrace 88 |
| DV | Asphalt Bank | T89 | Terrace 89 |
| DW | Asphalt Bank | T90 | Terrace 90 |
| DX | Asphalt Bank | T91 | Terrace 91 |
| DY | Asphalt Bank | T92 | Terrace 92 |
| DZ | Asphalt Bank | T93 | Terrace 93 |
| EA | Asphalt Bank | T94 | Terrace 94 |
| EB | Asphalt Bank | T95 | Terrace 95 |
| EC | Asphalt Bank | T96 | Terrace 96 |
| ED | Asphalt Bank | T97 | Terrace 97 |
| EE | Asphalt Bank | T98 | Terrace 98 |
| EF | Asphalt Bank | T99 | Terrace 99 |
| EG | Asphalt Bank | T100 | Terrace 100 |

| |
|----------|
| 1 |
| 2 3 |
| 5 6 4 |
| 8 9 7 |
| 11 12 10 |

Survey OPERATIONS

Smith Street, Skelmersdale, Lincs. WN5 8LN
 Tel: 01695 725662 Fax: 01695 51816
 Email: mail@survops.co.uk - www.survops.co.uk

Client: **Shepherd Gilmour**

Drawing Title: **Topographical Survey of Land at: Port Cheshire Ellesmere Port**

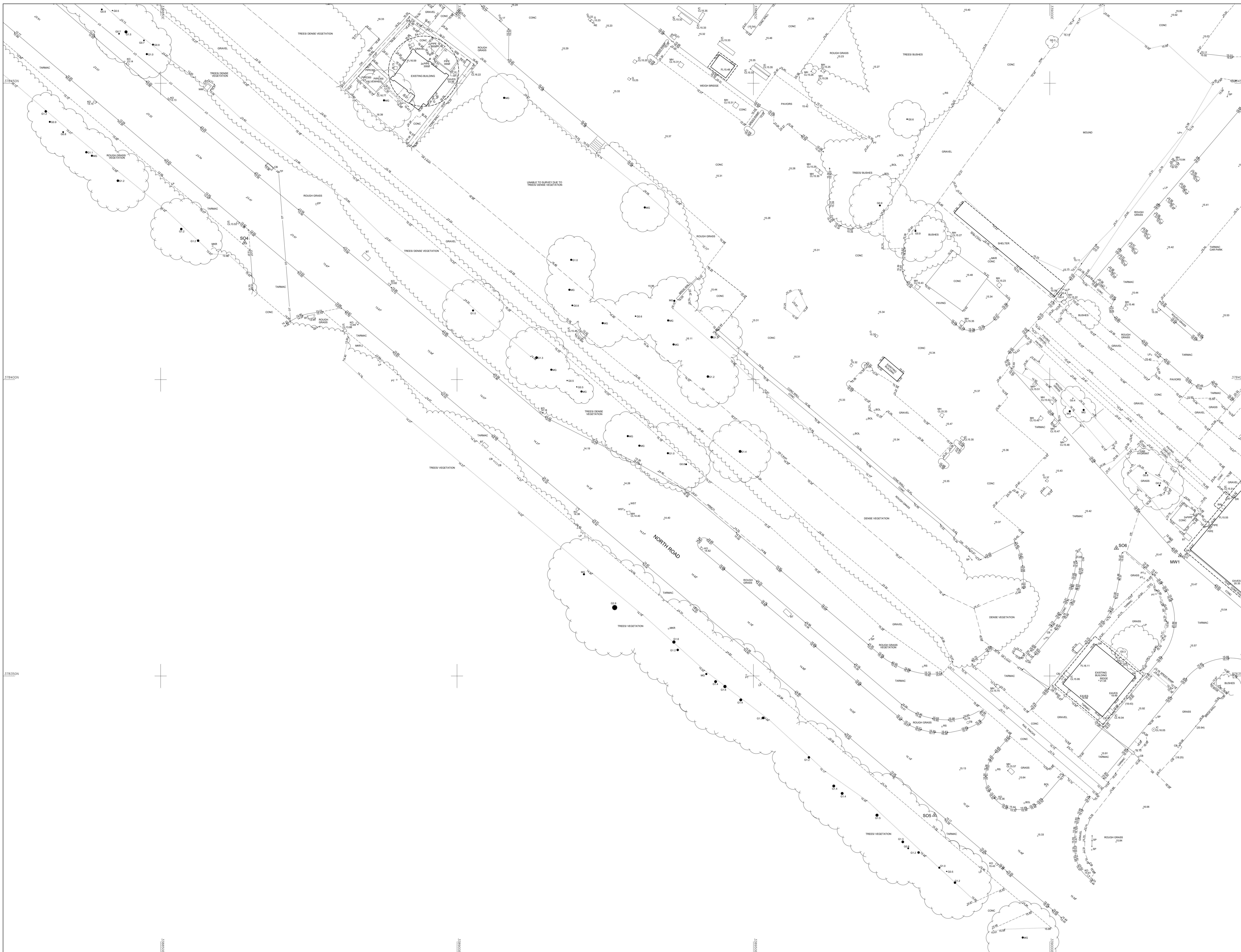
Sheet 10 of 12

Scale(s): **1:200** Surveyor: **CA/MW**

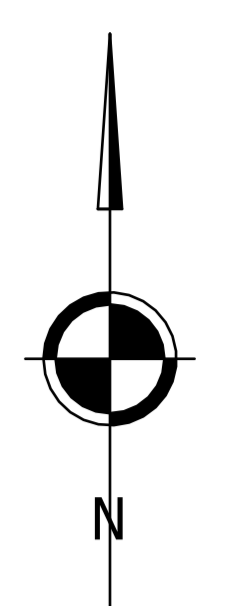
Date: **Jan 21** Drawn: **DIF**

Job Number: **20K288** Checked: **SO**

Sheet Size & Drg Number & Revision: **A0 20K288/010**



© Survey Operations Limited 2021
 Reproduction in whole or in part by any means is prohibited without the prior permission of Survey Operations Limited.



Note:
 The survey is plotted on a plane local to the site. Orientation to National Grid. All levels relate to Ordnance Datum, achieved using the OS National GPS Network. Survey Control Markers established for Mapping purposes only and should not be used for Construction without the written approval of Survey Operations Ltd.

| Point | Easting | Northing | Height |
|-------|-----------|-----------|--------|
| S01 | 138646.93 | 278207.68 | 10.03 |
| S02 | 138649.63 | 278206.00 | 9.22 |
| S03 | 138644.18 | 278223.71 | 15.27 |
| S04 | 138644.18 | 278223.71 | 15.27 |
| S05 | 138644.18 | 278223.71 | 15.27 |
| S06 | 138644.18 | 278223.71 | 15.27 |
| S07 | 138644.18 | 278223.71 | 15.27 |
| S08 | 138644.18 | 278223.71 | 15.27 |
| S09 | 138644.18 | 278223.71 | 15.27 |
| S10 | 138644.18 | 278223.71 | 15.27 |
| S11 | 138644.18 | 278223.71 | 15.27 |
| S12 | 138644.18 | 278223.71 | 15.27 |
| S13 | 138644.18 | 278223.71 | 15.27 |
| S14 | 138644.18 | 278223.71 | 15.27 |
| S15 | 138644.18 | 278223.71 | 15.27 |
| S16 | 138644.18 | 278223.71 | 15.27 |
| S17 | 138644.18 | 278223.71 | 15.27 |
| S18 | 138644.18 | 278223.71 | 15.27 |
| S19 | 138644.18 | 278223.71 | 15.27 |
| S20 | 138644.18 | 278223.71 | 15.27 |
| S21 | 138644.18 | 278223.71 | 15.27 |
| S22 | 138644.18 | 278223.71 | 15.27 |
| S23 | 138644.18 | 278223.71 | 15.27 |
| S24 | 138644.18 | 278223.71 | 15.27 |
| S25 | 138644.18 | 278223.71 | 15.27 |
| S26 | 138644.18 | 278223.71 | 15.27 |
| S27 | 138644.18 | 278223.71 | 15.27 |
| S28 | 138644.18 | 278223.71 | 15.27 |
| S29 | 138644.18 | 278223.71 | 15.27 |
| S30 | 138644.18 | 278223.71 | 15.27 |
| S31 | 138644.18 | 278223.71 | 15.27 |
| S32 | 138644.18 | 278223.71 | 15.27 |
| S33 | 138644.18 | 278223.71 | 15.27 |
| S34 | 138644.18 | 278223.71 | 15.27 |
| S35 | 138644.18 | 278223.71 | 15.27 |
| S36 | 138644.18 | 278223.71 | 15.27 |
| S37 | 138644.18 | 278223.71 | 15.27 |
| S38 | 138644.18 | 278223.71 | 15.27 |
| S39 | 138644.18 | 278223.71 | 15.27 |
| S40 | 138644.18 | 278223.71 | 15.27 |
| S41 | 138644.18 | 278223.71 | 15.27 |
| S42 | 138644.18 | 278223.71 | 15.27 |
| S43 | 138644.18 | 278223.71 | 15.27 |
| S44 | 138644.18 | 278223.71 | 15.27 |
| S45 | 138644.18 | 278223.71 | 15.27 |
| S46 | 138644.18 | 278223.71 | 15.27 |
| S47 | 138644.18 | 278223.71 | 15.27 |
| S48 | 138644.18 | 278223.71 | 15.27 |
| S49 | 138644.18 | 278223.71 | 15.27 |
| S50 | 138644.18 | 278223.71 | 15.27 |
| S51 | 138644.18 | 278223.71 | 15.27 |
| S52 | 138644.18 | 278223.71 | 15.27 |
| S53 | 138644.18 | 278223.71 | 15.27 |
| S54 | 138644.18 | 278223.71 | 15.27 |
| S55 | 138644.18 | 278223.71 | 15.27 |
| S56 | 138644.18 | 278223.71 | 15.27 |
| S57 | 138644.18 | 278223.71 | 15.27 |
| S58 | 138644.18 | 278223.71 | 15.27 |
| S59 | 138644.18 | 278223.71 | 15.27 |
| S60 | 138644.18 | 278223.71 | 15.27 |
| S61 | 138644.18 | 278223.71 | 15.27 |
| S62 | 138644.18 | 278223.71 | 15.27 |
| S63 | 138644.18 | 278223.71 | 15.27 |
| S64 | 138644.18 | 278223.71 | 15.27 |
| S65 | 138644.18 | 278223.71 | 15.27 |
| S66 | 138644.18 | 278223.71 | 15.27 |
| S67 | 138644.18 | 278223.71 | 15.27 |
| S68 | 138644.18 | 278223.71 | 15.27 |
| S69 | 138644.18 | 278223.71 | 15.27 |
| S70 | 138644.18 | 278223.71 | 15.27 |
| S71 | 138644.18 | 278223.71 | 15.27 |
| S72 | 138644.18 | 278223.71 | 15.27 |
| S73 | 138644.18 | 278223.71 | 15.27 |
| S74 | 138644.18 | 278223.71 | 15.27 |
| S75 | 138644.18 | 278223.71 | 15.27 |
| S76 | 138644.18 | 278223.71 | 15.27 |
| S77 | 138644.18 | 278223.71 | 15.27 |
| S78 | 138644.18 | 278223.71 | 15.27 |
| S79 | 138644.18 | 278223.71 | 15.27 |
| S80 | 138644.18 | 278223.71 | 15.27 |
| S81 | 138644.18 | 278223.71 | 15.27 |
| S82 | 138644.18 | 278223.71 | 15.27 |
| S83 | 138644.18 | 278223.71 | 15.27 |
| S84 | 138644.18 | 278223.71 | 15.27 |
| S85 | 138644.18 | 278223.71 | 15.27 |
| S86 | 138644.18 | 278223.71 | 15.27 |
| S87 | 138644.18 | 278223.71 | 15.27 |
| S88 | 138644.18 | 278223.71 | 15.27 |
| S89 | 138644.18 | 278223.71 | 15.27 |
| S90 | 138644.18 | 278223.71 | 15.27 |
| S91 | 138644.18 | 278223.71 | 15.27 |
| S92 | 138644.18 | 278223.71 | 15.27 |
| S93 | 138644.18 | 278223.71 | 15.27 |
| S94 | 138644.18 | 278223.71 | 15.27 |
| S95 | 138644.18 | 278223.71 | 15.27 |
| S96 | 138644.18 | 278223.71 | 15.27 |
| S97 | 138644.18 | 278223.71 | 15.27 |
| S98 | 138644.18 | 278223.71 | 15.27 |
| S99 | 138644.18 | 278223.71 | 15.27 |
| S00 | 138644.18 | 278223.71 | 15.27 |

STANDARD REFERENCE & ABBREVIATIONS

| | | | |
|----|---------|----|------------------|
| AL | Asphalt | SL | Street Level |
| AN | Asphalt | SP | Spot Height |
| AR | Asphalt | SR | Survey Reference |
| AS | Asphalt | SS | Survey Station |
| AT | Asphalt | ST | Street |
| AV | Asphalt | SV | Survey Value |
| AW | Asphalt | SW | Survey Width |
| AX | Asphalt | SY | Survey Year |
| AY | Asphalt | SZ | Survey Zone |
| AZ | Asphalt | T0 | Topography |
| BA | Asphalt | T1 | Topography |
| BB | Asphalt | T2 | Topography |
| BC | Asphalt | T3 | Topography |
| BD | Asphalt | T4 | Topography |
| BE | Asphalt | T5 | Topography |
| BF | Asphalt | T6 | Topography |
| BG | Asphalt | T7 | Topography |
| BH | Asphalt | T8 | Topography |
| BI | Asphalt | T9 | Topography |
| BJ | Asphalt | T0 | Topography |
| BK | Asphalt | T1 | Topography |
| BL | Asphalt | T2 | Topography |
| BM | Asphalt | T3 | Topography |
| BN | Asphalt | T4 | Topography |
| BO | Asphalt | T5 | Topography |
| BP | Asphalt | T6 | Topography |
| BQ | Asphalt | T7 | Topography |
| BR | Asphalt | T8 | Topography |
| BS | Asphalt | T9 | Topography |
| BT | Asphalt | T0 | Topography |
| BV | Asphalt | T1 | Topography |
| BW | Asphalt | T2 | Topography |
| BX | Asphalt | T3 | Topography |
| BY | Asphalt | T4 | Topography |
| BZ | Asphalt | T5 | Topography |
| CA | Asphalt | T6 | Topography |
| CB | Asphalt | T7 | Topography |
| CC | Asphalt | T8 | Topography |
| CD | Asphalt | T9 | Topography |
| CE | Asphalt | T0 | Topography |
| CF | Asphalt | T1 | Topography |
| CG | Asphalt | T2 | Topography |
| CH | Asphalt | T3 | Topography |
| CI | Asphalt | T4 | Topography |
| CJ | Asphalt | T5 | Topography |
| CK | Asphalt | T6 | Topography |
| CL | Asphalt | T7 | Topography |
| CM | Asphalt | T8 | Topography |
| CN | Asphalt | T9 | Topography |
| CO | Asphalt | T0 | Topography |
| CP | Asphalt | T1 | Topography |
| CQ | Asphalt | T2 | Topography |
| CR | Asphalt | T3 | Topography |
| CS | Asphalt | T4 | Topography |
| CT | Asphalt | T5 | Topography |
| CU | Asphalt | T6 | Topography |
| CV | Asphalt | T7 | Topography |
| CW | Asphalt | T8 | Topography |
| CX | Asphalt | T9 | Topography |
| CY | Asphalt | T0 | Topography |
| CZ | Asphalt | T1 | Topography |
| DA | Asphalt | T2 | Topography |
| DB | Asphalt | T3 | Topography |
| DC | Asphalt | T4 | Topography |
| DD | Asphalt | T5 | Topography |
| DE | Asphalt | T6 | Topography |
| DF | Asphalt | T7 | Topography |
| DG | Asphalt | T8 | Topography |
| DH | Asphalt | T9 | Topography |
| DI | Asphalt | T0 | Topography |
| DJ | Asphalt | T1 | Topography |
| DK | Asphalt | T2 | Topography |
| DL | Asphalt | T3 | Topography |
| DM | Asphalt | T4 | Topography |
| DN | Asphalt | T5 | Topography |
| DO | Asphalt | T6 | Topography |
| DP | Asphalt | T7 | Topography |
| DQ | Asphalt | T8 | Topography |
| DR | Asphalt | T9 | Topography |
| DS | Asphalt | T0 | Topography |
| DT | Asphalt | T1 | Topography |
| DU | Asphalt | T2 | Topography |
| DV | Asphalt | T3 | Topography |
| DW | Asphalt | T4 | Topography |
| DX | Asphalt | T5 | Topography |
| DY | Asphalt | T6 | Topography |
| DZ | Asphalt | T7 | Topography |
| EA | Asphalt | T8 | Topography |
| EB | Asphalt | T9 | Topography |
| EC | Asphalt | T0 | Topography |
| ED | Asphalt | T1 | Topography |
| EE | Asphalt | T2 | Topography |
| EF | Asphalt | T3 | Topography |
| EG | Asphalt | T4 | Topography |
| EH | Asphalt | T5 | Topography |
| EI | Asphalt | T6 | Topography |
| EJ | Asphalt | T7 | Topography |
| EK | Asphalt | T8 | Topography |
| EL | Asphalt | T9 | Topography |
| EM | Asphalt | T0 | Topography |
| EN | Asphalt | T1 | Topography |
| EO | Asphalt | T2 | Topography |
| EP | Asphalt | T3 | Topography |
| EQ | Asphalt | T4 | Topography |
| ER | Asphalt | T5 | Topography |
| ES | Asphalt | T6 | Topography |
| ET | Asphalt | T7 | Topography |
| EU | Asphalt | T8 | Topography |
| EV | Asphalt | T9 | Topography |
| EW | Asphalt | T0 | Topography |
| EX | Asphalt | T1 | Topography |
| EY | Asphalt | T2 | Topography |
| EZ | Asphalt | T3 | Topography |
| FA | Asphalt | T4 | Topography |
| FB | Asphalt | T5 | Topography |
| FC | Asphalt | T6 | Topography |
| FD | Asphalt | T7 | Topography |
| FE | Asphalt | T8 | Topography |
| FF | Asphalt | T9 | Topography |
| FG | Asphalt | T0 | Topography |
| FH | Asphalt | T1 | Topography |
| FI | Asphalt | T2 | Topography |
| FJ | Asphalt | T3 | Topography |
| FK | Asphalt | T4 | Topography |
| FL | Asphalt | T5 | Topography |
| FM | Asphalt | T6 | Topography |
| FN | Asphalt | T7 | Topography |
| FO | Asphalt | T8 | Topography |
| FP | Asphalt | T9 | Topography |
| FQ | Asphalt | T0 | Topography |
| FR | Asphalt | T1 | Topography |
| FS | Asphalt | T2 | Topography |
| FT | Asphalt | T3 | Topography |
| FU | Asphalt | T4 | Topography |
| FV | Asphalt | T5 | Topography |
| FW | Asphalt | T6 | Topography |
| FX | Asphalt | T7 | Topography |
| FY | Asphalt | T8 | Topography |
| FZ | Asphalt | T9 | Topography |
| GA | Asphalt | T0 | Topography |
| GB | Asphalt | T1 | Topography |
| GC | Asphalt | T2 | Topography |
| GD | Asphalt | T3 | Topography |
| GE | Asphalt | T4 | Topography |
| GF | Asphalt | T5 | Topography |
| GG | Asphalt | T6 | Topography |
| GH | Asphalt | T7 | Topography |
| GI | Asphalt | T8 | Topography |
| GJ | Asphalt | T9 | Topography |
| GK | Asphalt | T0 | Topography |
| GL | Asphalt | T1 | Topography |
| GM | Asphalt | T2 | Topography |
| GN | Asphalt | T3 | Topography |
| GO | Asphalt | T4 | Topography |
| GP | Asphalt | T5 | Topography |
| GQ | Asphalt | T6 | Topography |
| GR | Asphalt | T7 | Topography |
| GS | Asphalt | T8 | Topography |
| GT | Asphalt | T9 | Topography |
| GU | Asphalt | T0 | Topography |
| GV | Asphalt | T1 | Topography |
| GW | Asphalt | T2 | Topography |
| GX | Asphalt | T3 | Topography |
| GY | Asphalt | T4 | Topography |
| GZ | Asphalt | T5 | Topography |
| HA | Asphalt | T6 | Topography |
| HB | Asphalt | T7 | Topography |
| HC | Asphalt | T8 | Topography |
| HD | Asphalt | T9 | Topography |
| HE | Asphalt | T0 | Topography |
| HF | Asphalt | T1 | Topography |
| HG | Asphalt | T2 | Topography |
| HH | Asphalt | T3 | Topography |
| HI | Asphalt | T4 | Topography |
| HJ | Asphalt | T5 | Topography |
| HK | Asphalt | T6 | Topography |
| HL | Asphalt | T7 | Topography |
| HM | Asphalt | T8 | Topography |
| HN | Asphalt | T9 | Topography |
| HO | Asphalt | T0 | Topography |
| HP | Asphalt | T1 | Topography |
| HQ | Asphalt | T2 | Topography |
| HR | Asphalt | T3 | Topography |
| HS | Asphalt | T4 | Topography |
| HT | Asphalt | T5 | Topography |
| HU | Asphalt | T6 | Topography |
| HV | Asphalt | T7 | Topography |
| HW | Asphalt | T8 | Topography |
| HX | Asphalt | T9 | Topography |
| HY | Asphalt | T0 | Topography |
| HZ | Asphalt | T1 | Topography |
| IA | Asphalt | T2 | Topography |
| IB | Asphalt | T3 | Topography |
| IC | Asphalt | T4 | Topography |
| ID | Asphalt | T5 | Topography |
| IE | Asphalt | T6 | Topography |
| IF | Asphalt | T7 | Topography |
| IG | Asphalt | T8 | Topography |
| IH | Asphalt | T9 | Topography |
| II | Asphalt | T0 | Topography |
| IJ | Asphalt | T1 | Topography |
| IK | Asphalt | T2 | Topography |
| IL | Asphalt | T3 | Topography |
| IM | Asphalt | T4 | Topography |
| IN | Asphalt | T5 | Topography |
| IO | Asphalt | T6 | Topography |
| IP | Asphalt | T7 | Topography |
| IQ | Asphalt | T8 | Topography |
| IR | Asphalt | T9 | Topography |
| IS | Asphalt | T0 | Topography |
| IT | Asphalt | T1 | Topography |
| IU | Asphalt | T2 | Topography |
| IV | Asphalt | T3 | Topography |
| IV | Asphalt | T4 | Topography |
| IV | Asphalt | T5 | Topography |
| IV | Asphalt | T6 | Topography |
| IV | Asphalt | T7 | Topography |
| IV | Asphalt | T8 | Topography |
| IV | Asphalt | T9 | Topography |
| IV | Asphalt | T0 | Topography |
| IV | Asphalt | T1 | Topography |
| IV | Asphalt | T2 | Topography |