

## **LANGDALE ROAD PENSHAW.**

This below offers the proposal for the parking of vehicles and storage of materials during the construction stage of the properties. The construction of the properties is carried out in 2 phases, Phase 2 will commence once phase-1 is complete.

### **PHASE-1. BUILD 2 x SEMI DETACHED HOUSES.**

PARKING:-During the construction of the 2x semi detached houses (plots 2 & 3 on slide-2), contractors can park on the plot/foot print that is designated for the build of the detached house (plot-1) (Indicated in yellow on slide-3).

MATERIAL:- 3 possible areas are available for the storage of materials during phase-1 construction, materials can be stored is the area indicated in **GREEN** on slide -3.

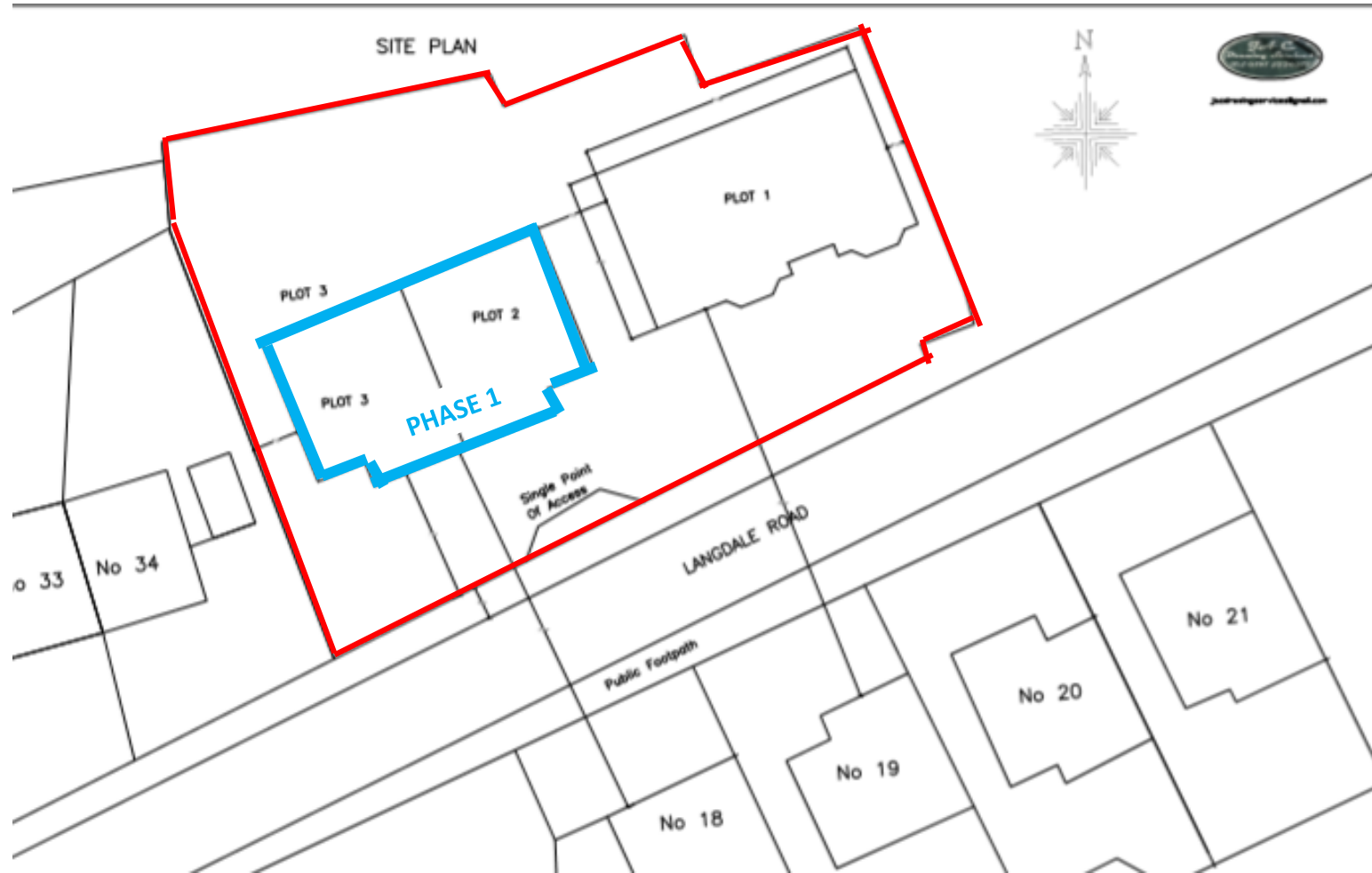
### **PHASE-2 BUILD THE DETACHED HOUSE.**

PARKING:-During the construction of the detached house (plots-1 on slide-2), contractors will be offered the front area (indicted in **YELLOW** on slide-4) as parking area.

Temporary additional parking can be offered to contractors during phase-2 in the adjacent stable yard (indicated in **YELLOW** on slide-5).

MATERIALS:- Phase-2 materials shall be stored on the area marked in green on slide-4.

PLOT BOUNDRY LINED IN RED



# PHASE-1

BOUNDARY OUT LINED IN RED

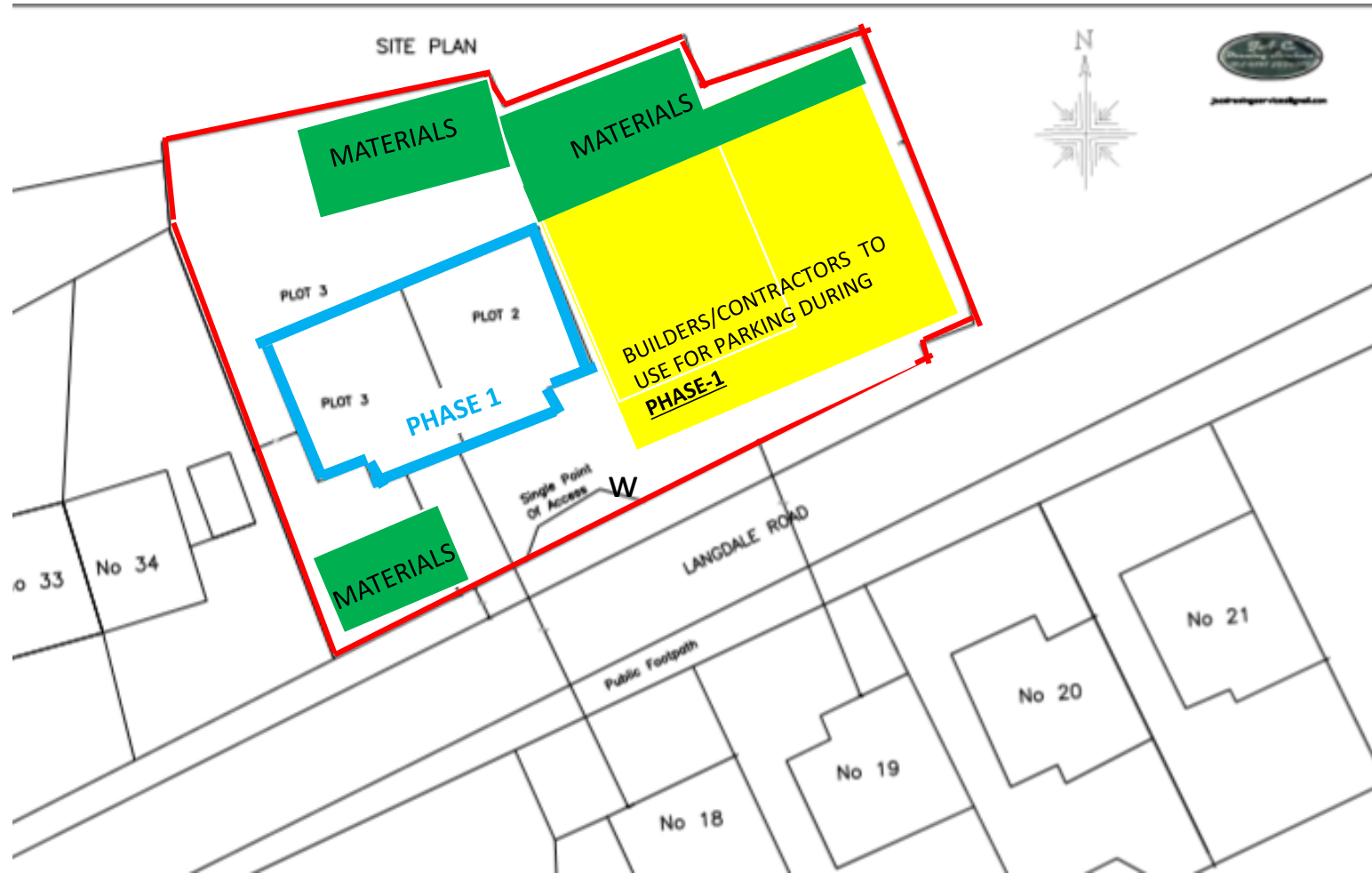
PLOT 2&3 OUT LINED IN BLUE

BUILDERS PARKING AREA IN YELLOW

MATERIAL STORAGE AREA IN GREEN



W wheel wash



## PHASE-2.

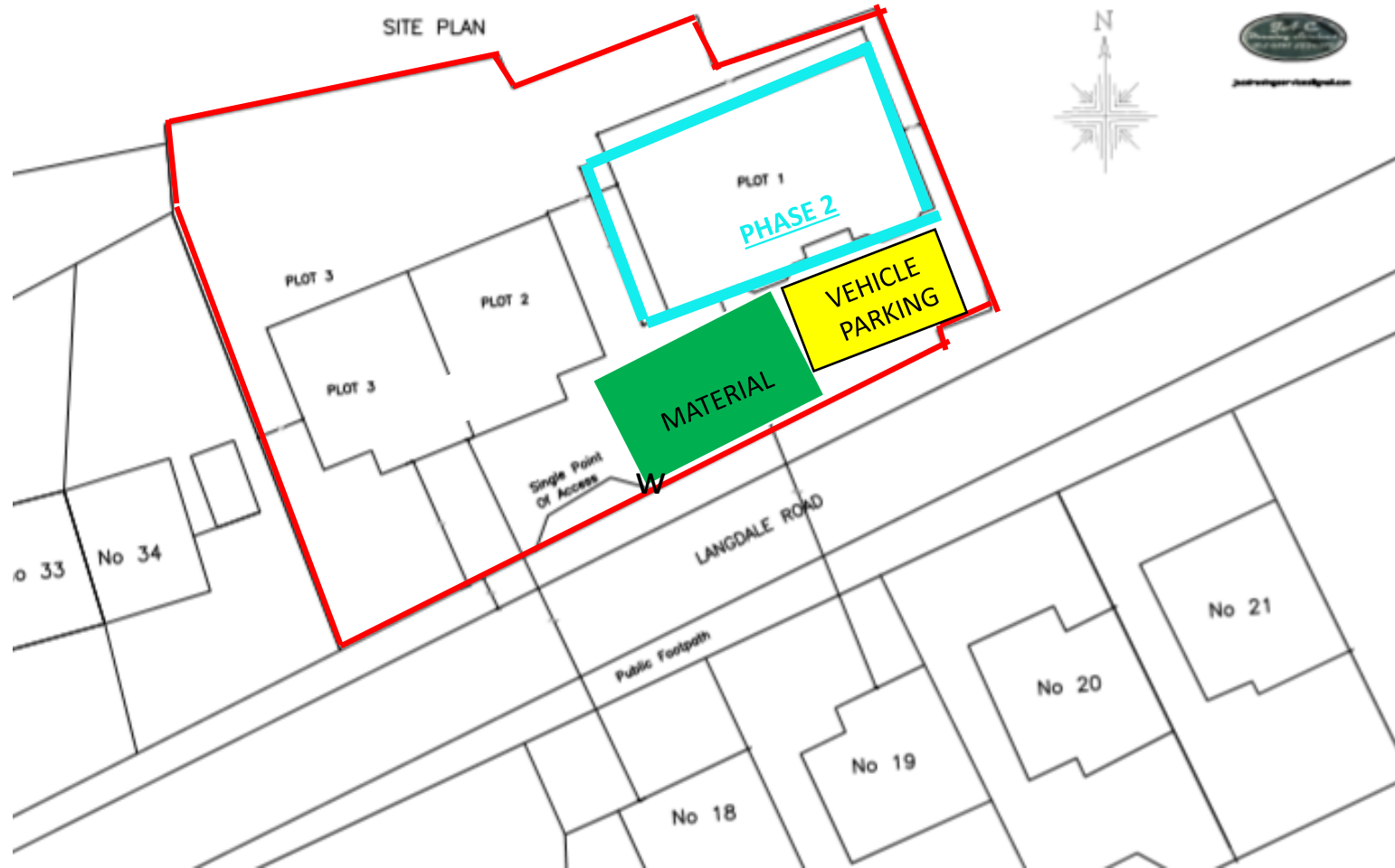
PLOT BOUNDRY LINED IN RED

BUILDERS PARKING AREA IN YELLOW

MATERIAL STORAGE AREA IN GREEN



w. Wheel wash



## PHASE-2.

Plot boundry marked in **red**

During phase-2 additional parking can be offered for builders/contractors in adjacent stable yard. Marked in **yellow**, easing congestion.



## LANGDALE ROAD PENSHAW, ROAD SIDE SITE/GROUND LEVEL SURVEY

7<sup>th</sup> Feburary 2020.

Site survey with the use of laser level technology was used to determine the fall/gradient of the road adjacent to the plot.

860m fall over 40mtr length.

860m fall over 40mtr length.

