

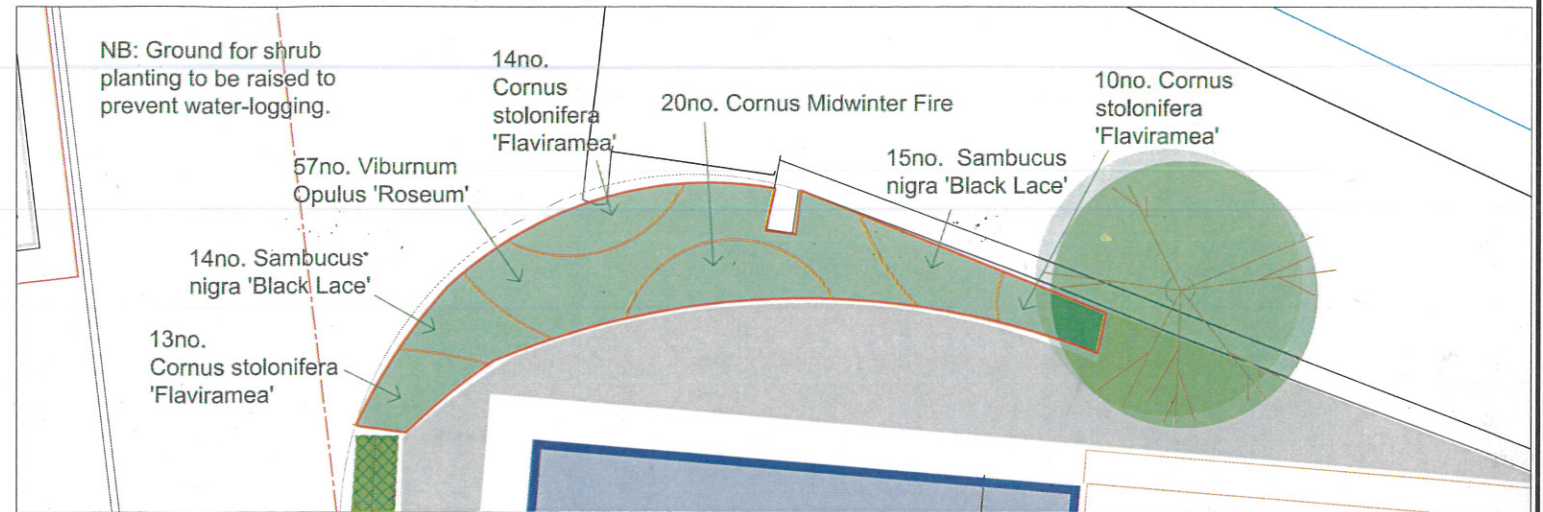
Soft Landscape General Layout Plan (Scale 1/250 @ A3)



**KEY**  
Trees and Vegetation

	Existing Trees to Remain		New Hedgerow Planting (See Annotation and Schedule)		EM8 Meadow Mixture (Meadow Mix for Seasonally Wet Ground)
	New Tree Planting (See Annotation and Schedule)		Ornamental Shrub Planting (See Schedules)		Amenity Grass

Detailed Shrub Planting Plan (Scale 1/200 @ A3)



Hedgerow Planting Schedule

Plant name	Height (cm)	Root Condition	Form	Length (lin.m)	Plants/lin.m	Total No. of Plants
<b>Hedgerows (Double staggered row at 330mm centres)</b>						
<i>Crataegus monogyna</i>	60-80	B	Transplant	53	6	318
<b>Total</b>						318

All new hedgerows to include post and 3 wire fencing where no other adjacent fencing type has been specified.

Standard Tree Planting Schedule

Name	Form	Age	Girth (cm)	Height (cm)	Clear stem (cm)	Root condition	Breaks	Nr of Trees
<i>Betula nigra</i>	Standard (extra heavy)	3x	12-14	350-425	175-200	RB	5	6

Shrub Planting Schedule

Plant name	Height (cm)	Root Condition	Size (L)	Habit	Breaks	Density (per m2)	Total Number Plants
<i>Cornus stolonifera 'Flaviramea'</i>	40-60	C	2L	Branched	3	3	40
<i>Cornus Midwinter Fire</i>	40-60	C	2L	Branched	3	3	20
<i>Sambucus nigra 'Black Lace'</i>	60-80	C	2L	Branched	3	3	29
<i>Viburnum opulus 'Roseum'</i>	40-60	C	3L	Branched	3	3	57
<b>Totals</b>							146

Trees and shrubs planted shall comply with BS.3936 (Specification of Nursery Stock) and shall be planted in accordance with BS.4428 (General Landscape Operations) and BS8545:2014 'Trees from nursery to dependence in the Landscape'. Planting also to be in accordance with accompanying NBS specification.

All planting stock to be clearly labelled on delivery with the full botanical name. Plant stock to be approved prior to delivery to site and planting and trees be set out by Landscape Architect. All topsoil to be of good quality AS-DUG in accordance with BS 3882:2015. Depths of topsoil (Turf -150mm), (Shrubs-300mm), Hedgerows (350mm) over free draining subsoil.

Organic soil improvement compost to be dug into all planting areas and used at 1cubic m per 10m2. All planting beds to be mulched in 75mm depth medium grade bark mulch immediately after planting.

If very wet or very dry conditions are found in proposed planting areas the landscape architect shall review planting locations and/or species.

Tree pits to be dug 400mm larger than rootball in any direction. Side and base of pit to be forked over to aid drainage help root establishment. Tree pit to be back-filled with a mix of:

- 1 part 'Melcourt topgrow' (or similar) tree planting compost;
- Mycorrhizal Fungi; and
- 3 parts good quality, as dug topsoil.

1m2 area of medium grade bark mulch to be placed at the base of each trees to a depth of 75mm. Mulch to be maintained at size and depth for two growing seasons.

Any queries in relation to planting schedules, layout or planting stock to be raised with Landscape Architect.

Suitable tree root barriers to be used on boundaries with hard-standing, walling, services, proposed and existing buildings.

Drawing not for construction.  
Do not scale from drawing.

## FOR PLANNING

Dock Road, Lytham. Proposed Units

**Soft Landscape General Layout Plan, Schedules and Specification**

SCALE: 1/250 & 1/200 @ A3 DATE: Sept 20

DRAWING: M628/DRL/LAND/01

