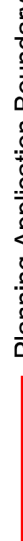
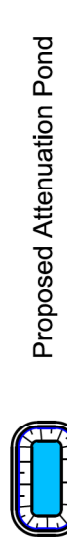



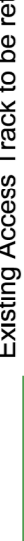
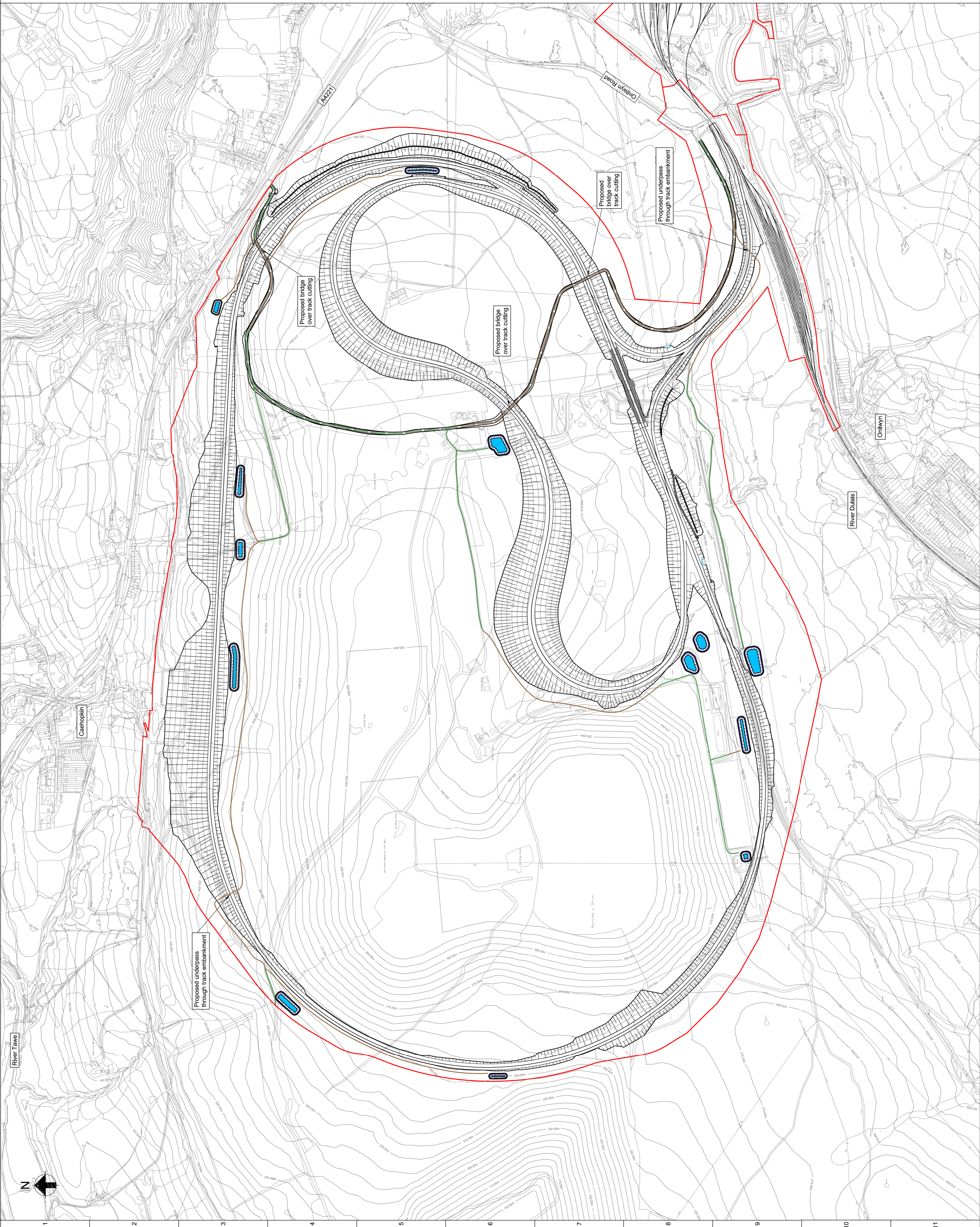


Legend

-  Planning Application Boundary
-  Proposed Attenuation Pond
-  Existing Access Track to be retained Asphalt Surface
-  Proposed Access Track Asphalt Surface
-  Existing Access Track to be retained Gravel/unbound surface
-  Proposed Access Track Gravel/unbound surface

Notes

1. Access tracks shown are to facilitate attenuation pond access and maintenance.
2. Access routes to be typically 3m wide.
3. Access track locations shown indicatively and subject to further design.



PO2	02/03/21	DS	JS	JS
Drawing Updated				
PO1	01/09/20	DO	JS	JS
Issued for Planning				
Issue	Date	By	Chkd	Appd

ARUP

4 Plemhead St, Capital Waleside
Cardiff, CF10 2PZ, F: +44(0)300 2072277
www.arup.com

Client
Welsh Government

Job Title
Global Centre for Rail Excellence

Drawing Title
Maintenance Access Routes

Scale at A1
1:5000

Discipline
Infrastructure

For Information
Drawing Status

Job No
264904

Issue
Drawing No
CG3075