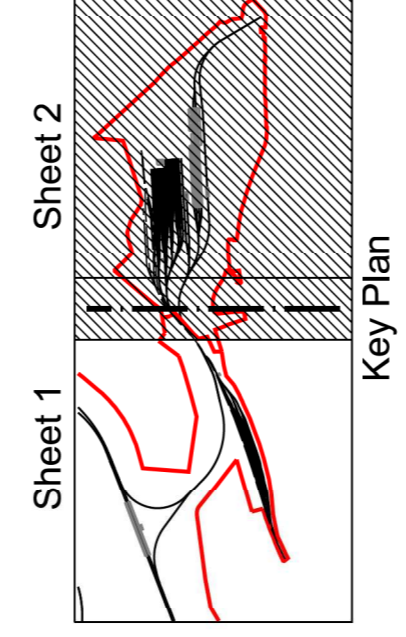


- Legend**
- Planning Application Boundary
 - Existing Watercourse
 - Existing Ridgeline
 - Existing Catchment
 - Existing Storm Drainage
 - Existing Private Foul Drainage
 - Existing DCWW Combined Sewer

- Notes**
1. All dimensions are in metres unless noted otherwise. All elevations are in metres Above Ordnance Datum (AOD). Do not scale.
 2. Existing catchments shown have been derived from the topography information from LIDAR survey. Existing catchments are shown for the washery site only and do not present whole river catchments.
 3. Existing Washery drainage shown traced from information provided by Celtic Energy.
 4. Existing watercourses as defined by the Ordnance Survey information shown.
 5. Existing DCWW combined sewer traced from asset information provided by DCWW.



PO1	17/07/20	DO	IA	JS
Issued for Planning				
Issue	Date	By	Chkd	Appd

ARUP

4 Plemhead St, Capital Waleside
Cardiff, CF10 0DZ, UK
F: +44(0)303 2047277
www.arup.com

Client
Welsh Government

Job Title
Global Centre for Rail Excellence

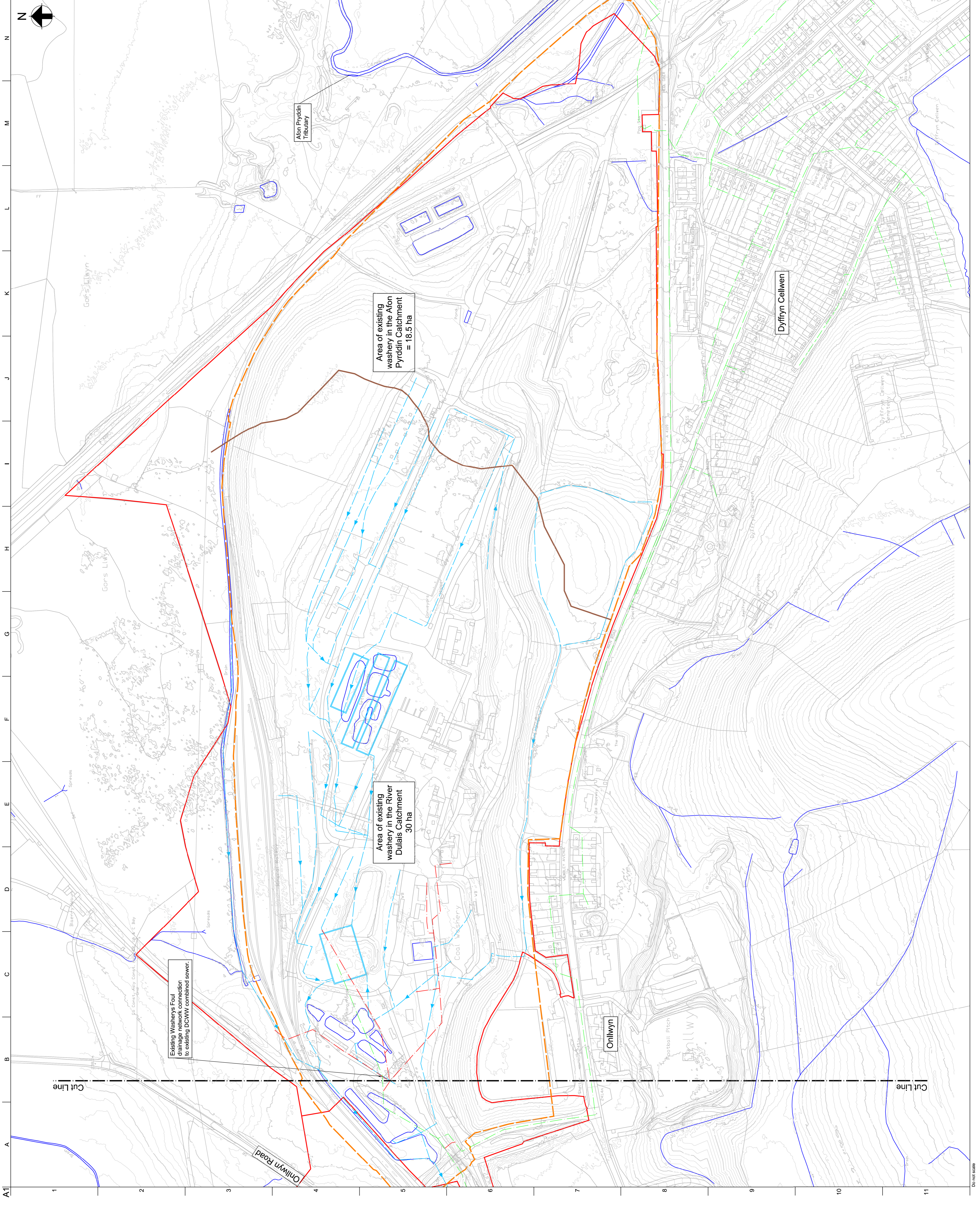
Drawing Title
**Washery Site
Existing Catchments and Drainage
Sheet 2 of 2**

Scale at A1
1:2000

Discipline
Civil

For Information
Drawing No
CG2503

Issue
P01



N
A1
1
2
3
4
5
6
7
8
9
10
11

