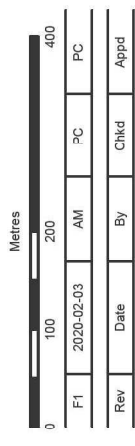


- | | |
|------------------------|-------------------|
| BF Bullfinch | M. Mistle Thrush |
| CK Cuckoo | MA Mallard |
| CU Curlew | MP Meadow Pipit |
| D. Duncock | RB Reed Bunting |
| GH Grasshopper Warbler | S. Skylark |
| HS House Sparrow | SG Starling |
| L. Lapwing | ST Song Thrush |
| LI Linnet | WH Whitethroat |
| LT Long-tailed Tit | WW Willow Warbler |

- Legend**
- Study Area
 - Transect 1
 - Transect 2
 - Transect 3
 - Transect 4
 - R -> Away
 - R -> Away, Call
 - R -> R Different Simultaneous
 - R -> Flight
 - R -> Flight, Call, Female
 - R -> Land
 - R -> Simultaneous
 - = Alarm
 - Call
 - R: Sight record
 - Song



Coordinate System: British National Grid
Source: Esri, DigitalGlobe, GeoEye, Earthstar Geographics, CNES/Airbus



63 St Thomas Street
Bristol
BS1 6JZ

Client
Welsh Government

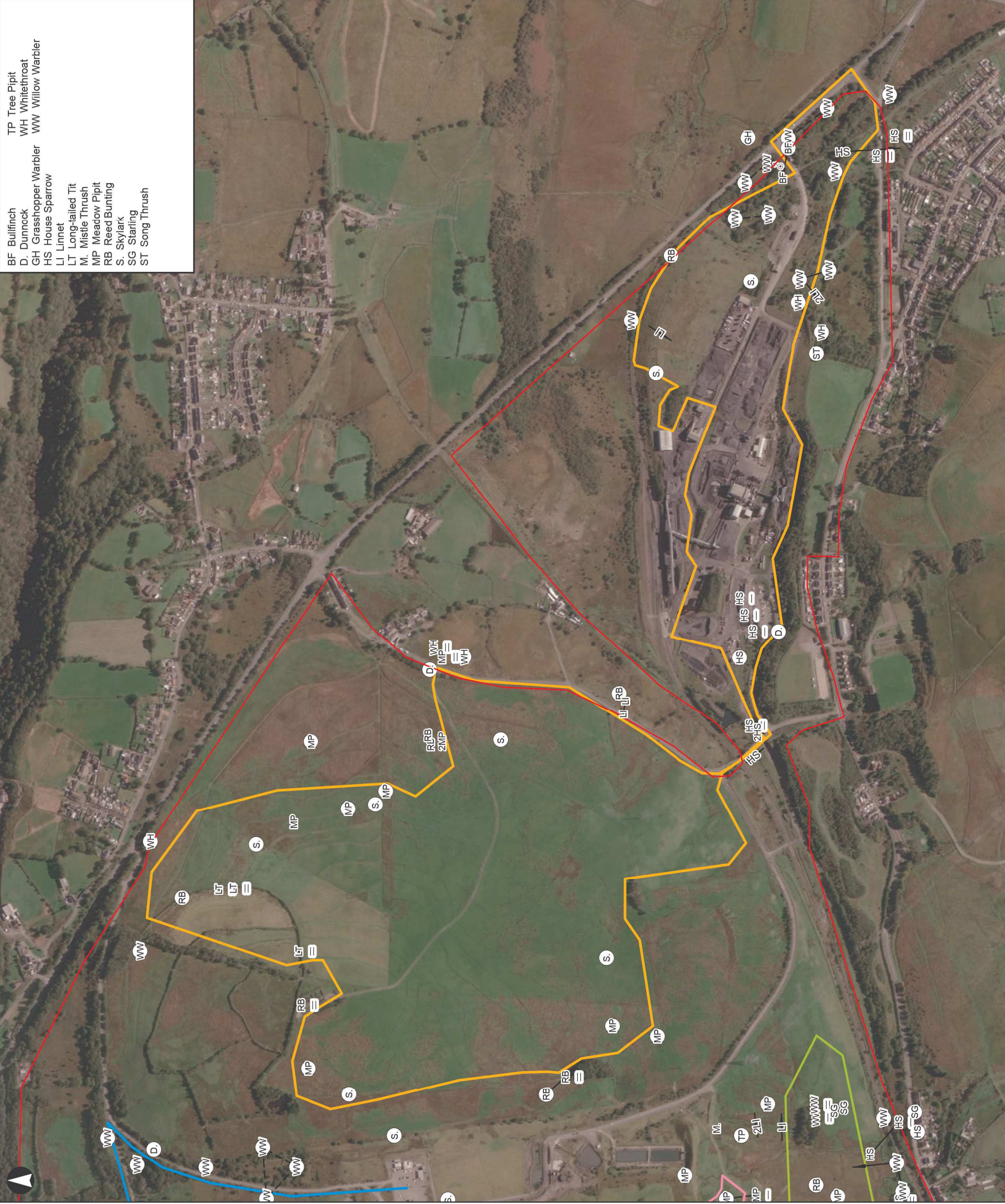
Project Title
Global Centre for Rail Excellence

Drawing Title
BBS Transect 3 - April Species of Conservation Significance

Scale of A3
1:7,750
Rate

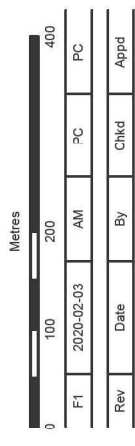
Stability
For Issue

| | |
|-------------|-----|
| Arup Job No | Rev |
| 264904 | F1 |
| Name | 007 |



- BF Bullfinch
- D. Duncock
- GH Grasshopper Warbler
- HS House Sparrow
- LI Linnet
- LT Long-tailed Tit
- M. Mistle Thrush
- MP Meadow Pipit
- RB Reed Bunting
- S. Skylark
- SG Starling
- ST Song Thrush
- TP Tree Pipit
- WH Whitethroat
- WW Willow Warbler

- Legend**
- Study Area
 - Transect 1
 - Transect 2
 - Transect 3
 - Transect 4
 - Aggressive
 - Away
 - R. R. Different Simultaneous
 - R. Flight
 - R. Flight, Alarm
 - R. Simultaneous
 - Song, two locations, same bird
 - Alarm
 - Call
 - Male
 - R. Sight record
 - Song



Coordinate System: British National Grid
 Source: Esri, DigitalGlobe, GeoEye, Earthstar Geographics, CNES/Airbus



63 St Thomas Street
 Bristol
 BS1 6JZ

Client
Welsh Government

Project Title
Global Centre for Rail Excellence

Drawing Title
**BBS Transect 3 - May
 Species of Conservation
 Significance**

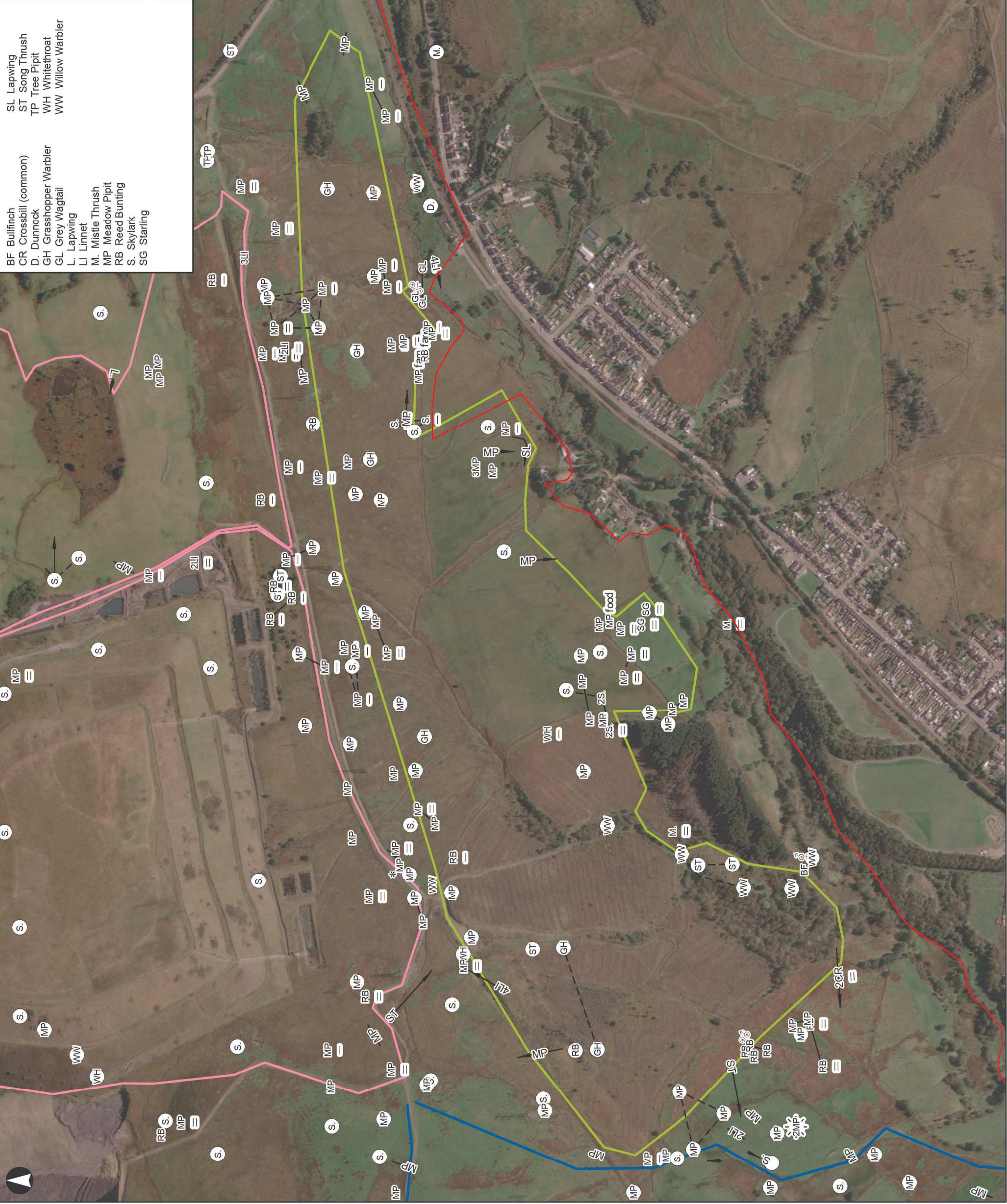
Scale of A3
1:7,750
 Note

Sustainability
For Issue

Arup Job No
264904

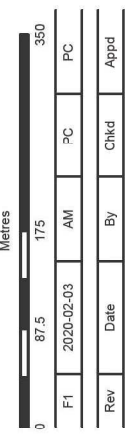
Rev
F1

Name
008



- BF Bullfinch
- CR Crossbill (common)
- D. Dunnock
- GH Grasshopper Warbler
- GL Grey Wagtail
- L. Lapwing
- LI Linnet
- M. Mistle Thrush
- MP Meadow Pipit
- RB Reed Bunting
- S. Skylark
- SG Starling
- SL Lapwing
- ST Song Thrush
- TP Tree Pipit
- WH Whitethroat
- WW Willow Warbler

- Legend**
- Study Area
- Transect 2
- Transect 3
- Transect 4
- Transect 5
- Away
- Away, Call
- R Different Simultaneous
- R Flight
- R Flight, Alarm
- R Land
- R Land, Song
- R Simultaneous
- Alarm
- Call
- fam Family
- Female
- Fight
- foodFood
- Male
- Nest
- Pair
- Sight record
- Song



Coordinate System: British National Grid
 Source: Esri, DigitalGlobe, GeoEye, Earthstar Geographics, CNES/Airbus



63 St Thomas Street
 Bristol
 BS1 6JZ

Client
Welsh Government

Project Title
Global Centre for Rail Excellence

Drawing Title
BBS Transect 3 - June Species of Conservation Significance

Scale of A3
1:6,750
 Note

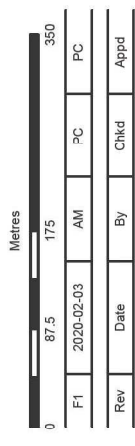
Sustainability
For Issue

| | |
|-------------|--------|
| Arup Job No | 264904 |
| Rev | F1 |
| Name | 009 |



- BF Bullfinch
- CK Cuckoo
- CU Curlew
- GH Grasshopper Warbler
- HS House Sparrow
- LI Linnet
- MA Mallard
- MP Meadow Pipit
- RB Reed Bunting
- S. Skylark
- SG Starling
- ST Song Thrush
- WH Whitethroat
- WW Willow Warbler

- Legend**
- Study Area
 - Transect 2
 - Transect 3
 - Transect 4
 - Transect 5
 - Away
 - Away, Alarm
 - Away, Call
 - R: Different Simultaneous
 - R: Flight
 - R: Flight, Call
 - R: Land
 - Land, Song
 - R: Simultaneous
 - = Alarm
 - Call
 - * Nest
 - R: Sighting record
 - Song



Coordinate System: British National Grid
 Source: Esri, DigitalGlobe, GeoEye, Earthstar Geographics, CNES/Airbus



63 St Thomas Street
 Bristol
 BS1 6JZ

Client
Welsh Government

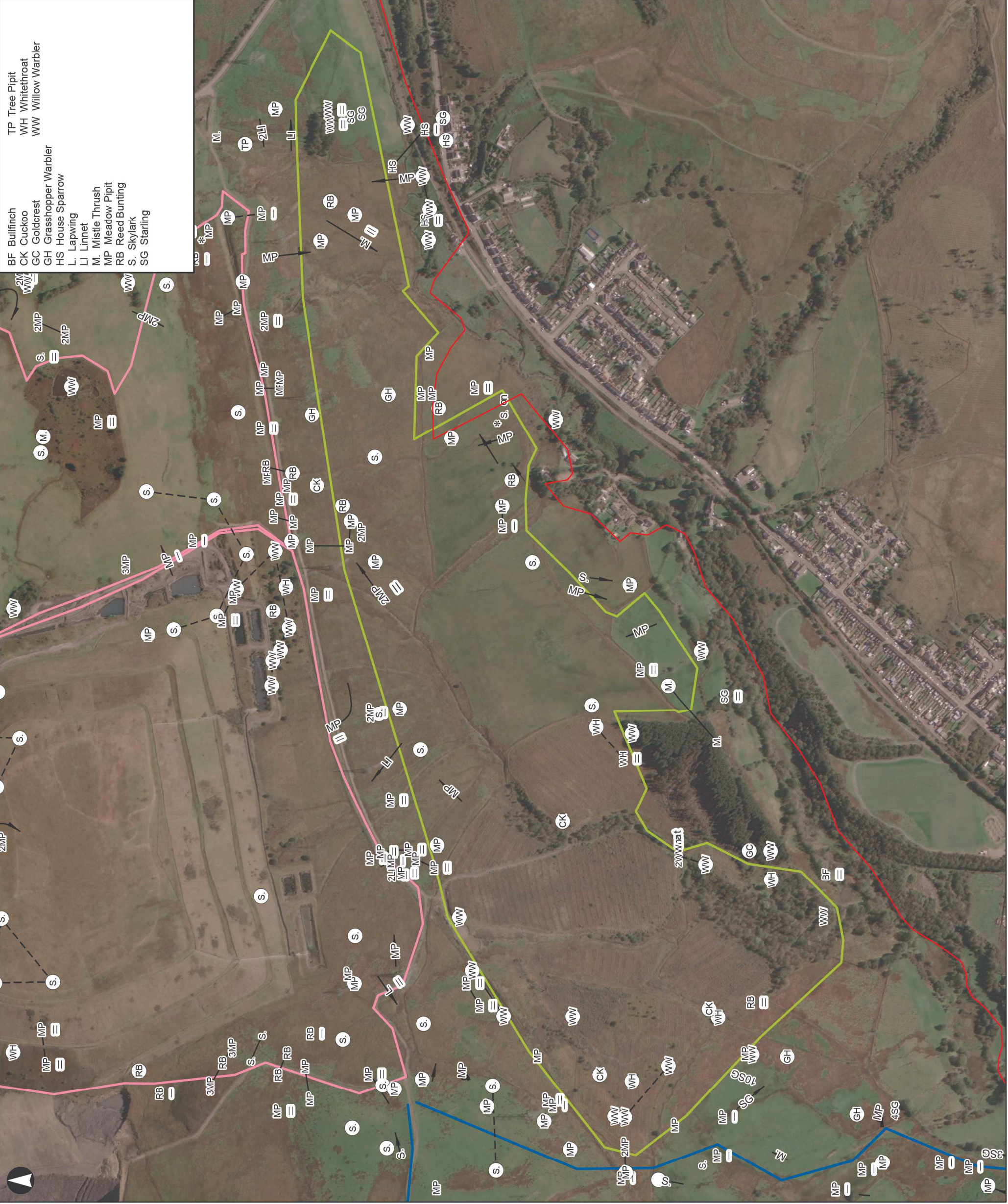
Project Title
**Global Centre for Rail
 Excellence**

Drawing Title
**BBS Transect 4 - April
 Species of Conservation
 Significance**

Scale of A3
1:6,750
 Note

Sustainability
For Issue

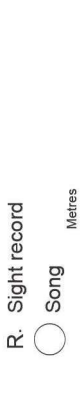
| | |
|-------------|--------|
| Arup Job No | 264904 |
| Rev | F1 |
| Name | 010 |



- TP Tree Pipit
- WH Whitethroat
- WW Willow Warbler
- BF Bullfinch
- CK Cuckoo
- GC Goldcrest
- GH Grasshopper Warbler
- HS House Sparrow
- L. Lapwing
- LI Linnet
- M. Mistle Thrush
- MP Meadow Pipit
- RB Reed Bunting
- S. Skylark
- SG Starling

- Study Area
- Transect 2
- Transect 3
- Transect 4
- Transect 5
- Aggressive
- R. Away
- R. Away, Alarm
- R. Different Simultaneous
- R. Flight
- R. Flight, Alarm
- R. Flight, Call
- R. Food Flight, Food
- R. Land
- Land, Song
- R. Simultaneous
- Song, two locations, same bird

- Alarm
- Call
- mat Nesting material
- * Nest
- * onOn
- R. Sight record
- Song



| Rev | Date | By | Chkd | Appd |
|-----|------------|----|------|------|
| F1 | 2020-02-03 | AM | PC | PC |

Coordinate System: British National Grid
 Source: Esri, DigitalGlobe, GeoEye, Earthstar Geographics, CNES/Airbus



63 St Thomas Street
 Bristol
 BS1 6JZ

Client
Welsh Government

Project Title
**Global Centre for Rail
 Excellence**

Drawing Title
**BBS Transect 4 - May
 Species of Conservation
 Significance**

Scale of A3
1:6,750
 Rate

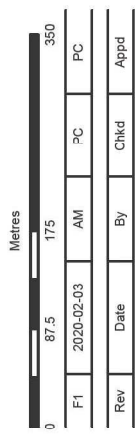
Sustainability
For Issue

| | |
|-------------|---------------|
| Arup Job No | 264904 |
| Rev | F1 |
| Name | 011 |



- BF Bullfinch
- CR Crossbill (common)
- D. Dunnock
- GH Grasshopper Warbler
- GL Grey Wagtail
- L. Lapwing
- LI Linnet
- M. Mistle Thrush
- MP Meadow Pipit
- RB Reed Bunting
- S. Skylark
- SG Starling
- SL Lapwing
- ST Song Thrush
- TP Tree Pipit
- WH Whitethroat
- WW Willow Warbler

- Legend
- Study Area
- Transect 2
- Transect 3
- Transect 4
- Transect 5
- Away
- Away, Call
- Away, Family
- Away, Family
- R-Different Simultaneous
- R-Flight
- R-Flight, Alarm
- R-Flight, Call
- R-Flight, Male
- Flight, Song
- Land
- Land, Female
- Land, Male
- Land, Song
- R-Simultaneous
- Alarm
- Alarm, Male
- Alarm, Pair
- Call
- Call, Family
- Family
- Female
- Flight
- Food
- Juv Juvenile
- Male
- Nest
- Pair
- Sight record
- Song



Coordinate System: British National Grid
 Source: Esri, DigitalGlobe, GeoEye, Earthstar Geographics, CNES/Airbus



63 St Thomas Street
 Bristol
 BS1 6JZ

Client
Welsh Government

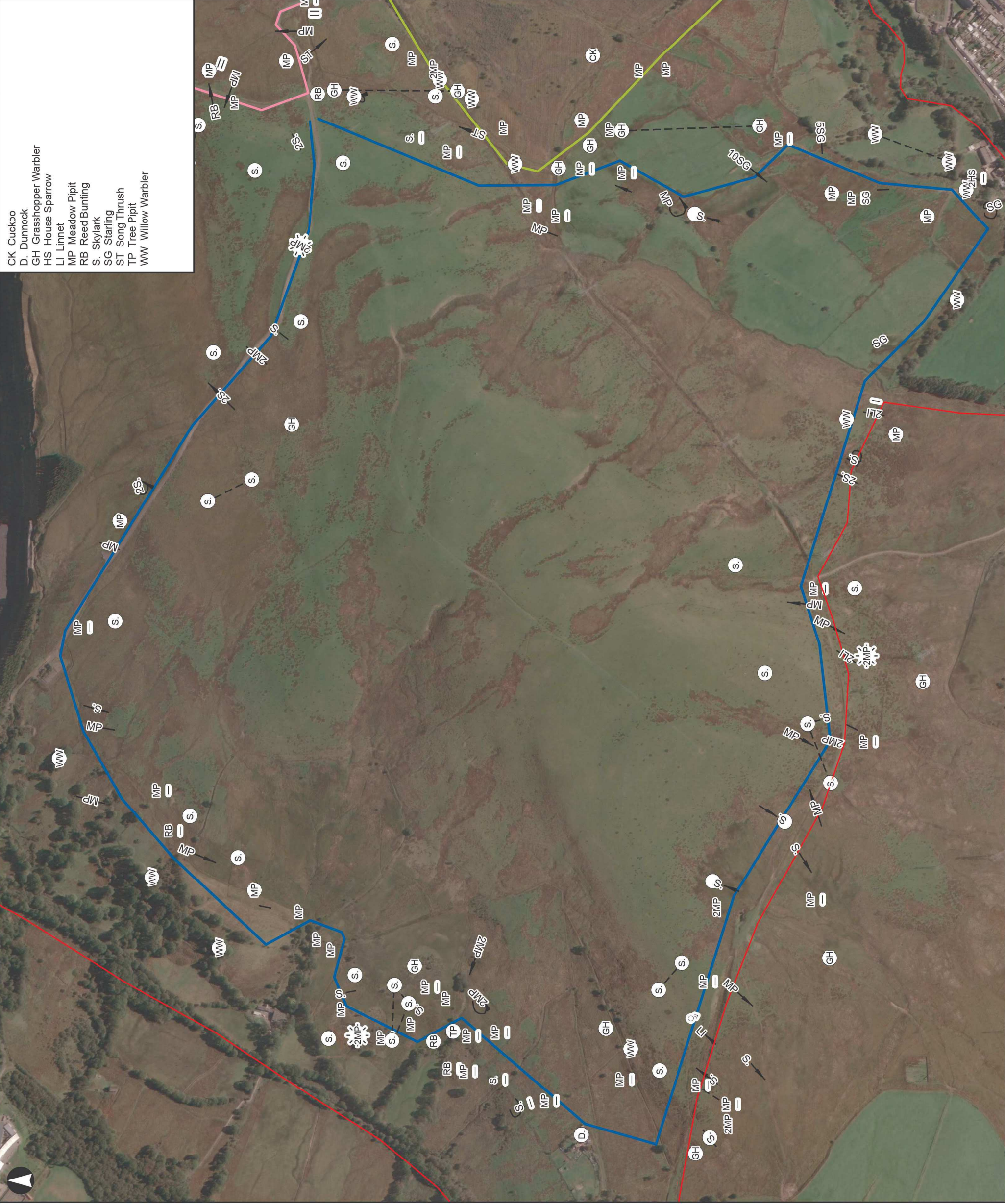
Project Title
Global Centre for Rail Excellence

Drawing Title
**BBS Transect 4 - June
 Species of Conservation
 Significance**

Scale of A3
1:6,750
 Note

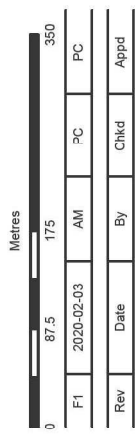
Sustainability
For Issue

| | |
|-------------|--------|
| Arup Job No | 264904 |
| Rev | F1 |
| Name | 012 |



- CK Cuckoo
- D. Dunnock
- GH Grasshopper Warbler
- HS House Sparrow
- LI Linnet
- MP Meadow Pipit
- RB Reed Bunting
- S. Skylark
- SG Starling
- ST Song Thrush
- TP Tree Pipit
- WW Willow Warbler

- Legend**
- Study Area
 - Transect 2
 - Transect 4
 - Transect 5
 - Away
 - Away, Alarm
 - R. Different Simultaneous
 - R. Flight
 - Flight, Aggressive
 - Flight, Call
 - Flight, Song
 - Land
 - Land, Male
 - Land, Song
 - Call
 - Flight
 - R. Sight record
 - Song



Coordinate System: British National Grid
 Source: Esri, DigitalGlobe, GeoEye, Earthstar Geographics, CNES/Airbus



63 St Thomas Street
 Bristol
 BS1 6JZ

Client
Welsh Government

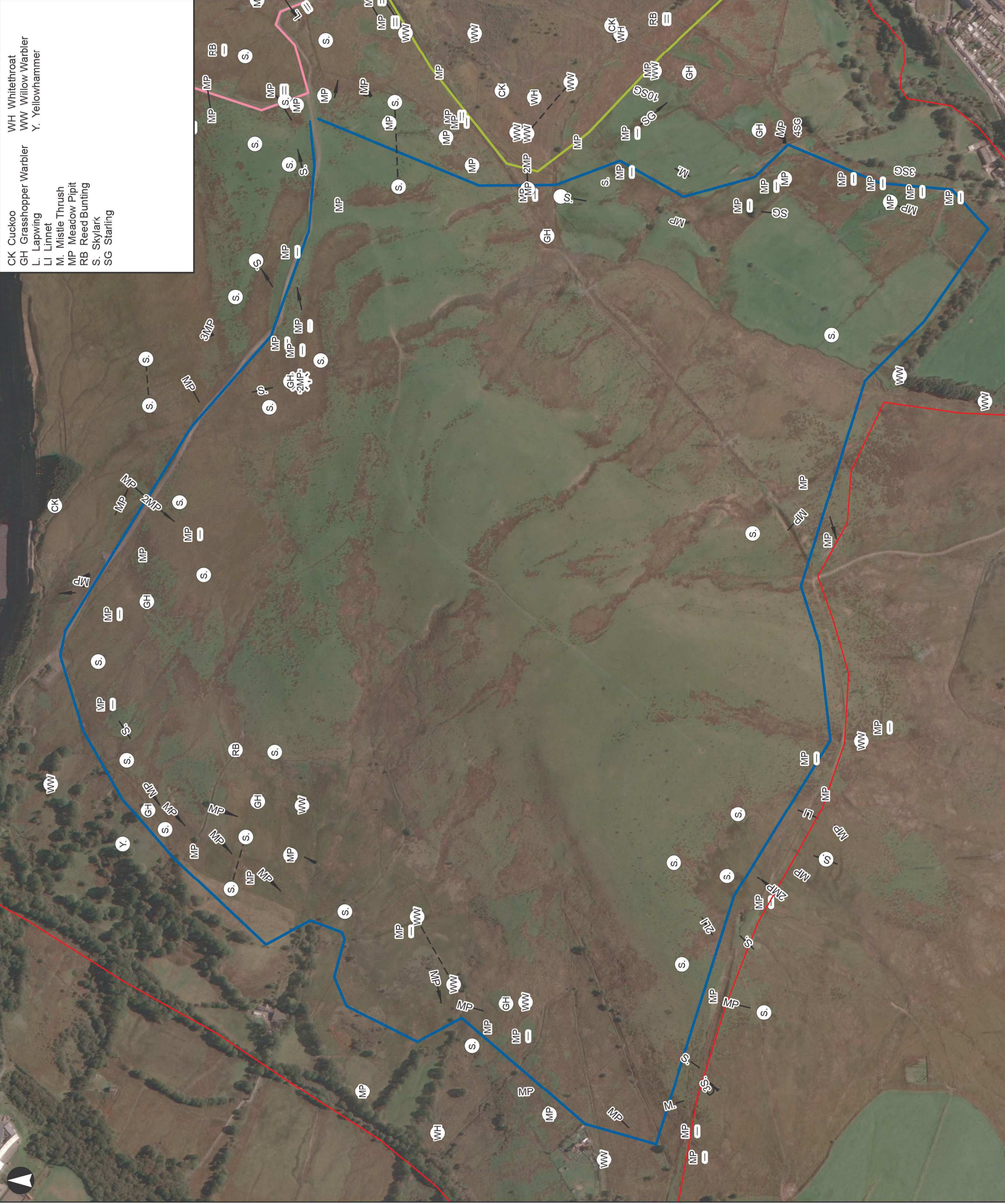
Project Title
Global Centre for Rail Excellence

Drawing Title
**BBS Transect 5 - April
 Species of Conservation
 Significance**

Scale of A3
1:6,750
 Date

For Issue
 Arup Job No
264904
 Rev
F1

Name
013



- CK Cuckoo
- GH Grasshopper Warbler
- L. Lapwing
- LI Linnet
- M. Mistle Thrush
- MP Meadow Pipit
- RB Reed Bunting
- S. Skylark
- SG Starling
- WH Whitethroat
- WW Willow Warbler
- Y. Yellowhammer

- Legend**
- Study Area
 - Transect 2
 - Transect 4
 - Transect 5
 - Away
 - R. - R. Different Simultaneous
 - .R.- Flight
 - R.- Flight, Alarm
 - Flight, Song
 - Land
 - Land, Song
 - R. Simultaneous
 - Song, two locations, same bird
 - Alarm
 - Call
 - Flight
 - R. Sight record
 - Song

Metres

| | | | | |
|-----|------------|----|------|------|
| F1 | 2020-02-03 | AM | PC | PC |
| Rev | Date | By | Chkd | Appd |

Coordinate System: British National Grid
 Source: Esri, DigitalGlobe, GeoEye, Earthstar Geographics, CNES/Airbus



63 St Thomas Street
 Bristol
 BS1 6JZ

Client
Welsh Government

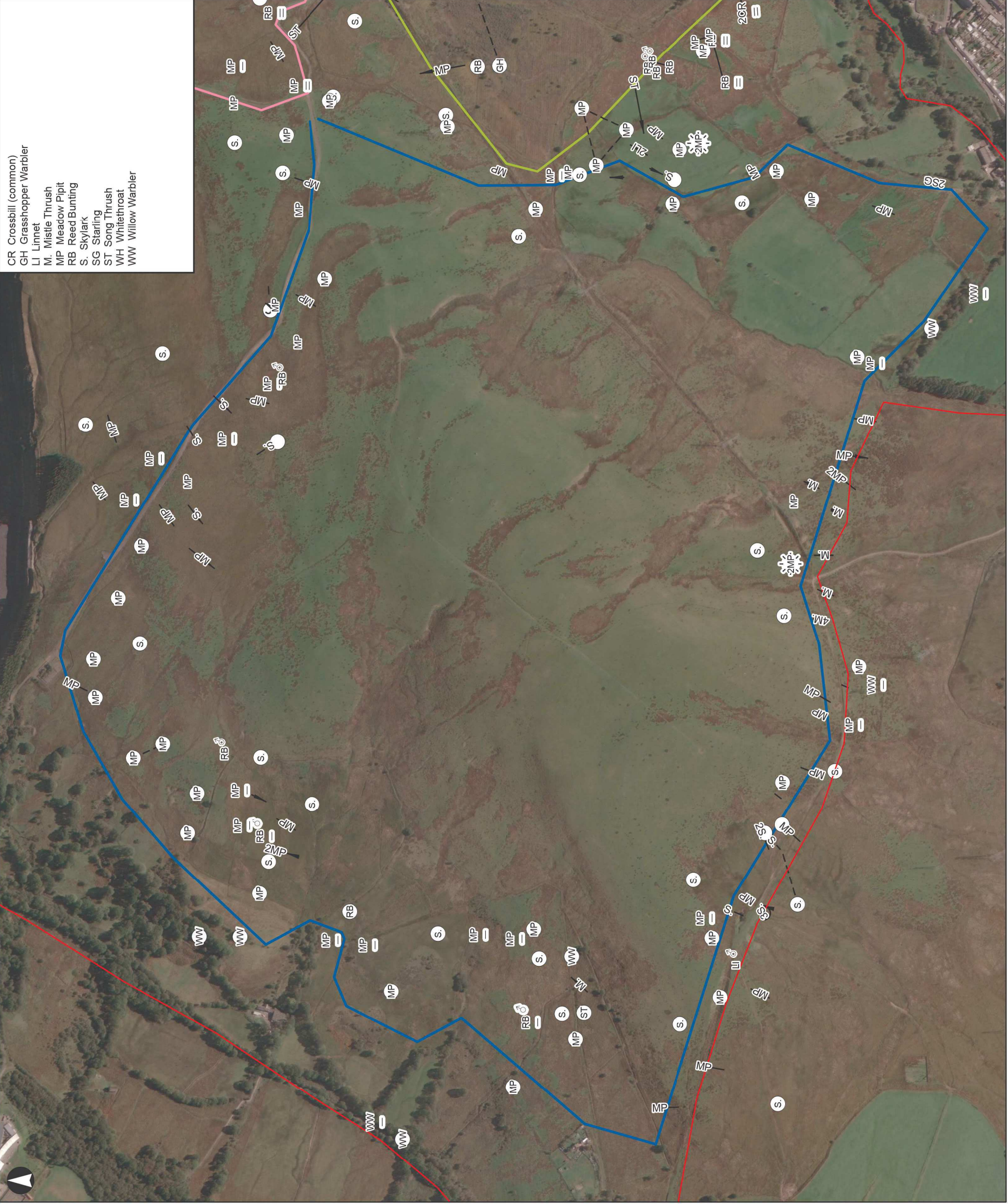
Project Title
**Global Centre for Rail
 Excellence**

Drawing Title
**BBS Transect 5 - May
 Species of Conservation
 Significance**

Scale of A3
1:6,750
 Date

For Issue
 Arup Job No
264904
 Rev
F1

Name
014



- CR Crossbill (common)
- GH Grasshopper Warbler
- LI Linnet
- M. Mistle Thrush
- MP Meadow Pipit
- RB Reed Bunting
- S. Skylark
- SG Starling
- ST Song Thrush
- WH Whitethroat
- WW Willow Warbler

- Legend**
- Study Area
 - Transect 2
 - Transect 4
 - Transect 5
 - Away
 - R. - R. Different Simultaneous
 - .R. - Flight
 - R. - Flight, Alarm
 - R. - Land
 - Land, Song
 - R. - R. Simultaneous
 - Alarm
 - Call
 - ♂ Call, Male
 - ♀ Female
 - ⊙ Fight
 - ♂ Male
 - R. Sight record
 - Song

Metres

| | | | |
|-----|------------|-----|------|
| 0 | 87.5 | 175 | 350 |
| F1 | 2020-02-03 | AM | PC |
| Rev | Date | By | Chkd |
| | | | Appd |

Coordinate System: British National Grid
 Source: Esri, DigitalGlobe, GeoEye, Earthstar Geographics, CNES/Airbus



63 St Thomas Street
 Bristol
 BS1 6JZ

Client
Welsh Government

Project Title
Global Centre for Rail Excellence

Drawing Title
**BBS Transect 5 - June
 Species of Conservation
 Significance**

Scale of A3
1:6,750
 Rate

Stability
For Issue
 Arup Job No
264904
 Name
015

Rev
F1