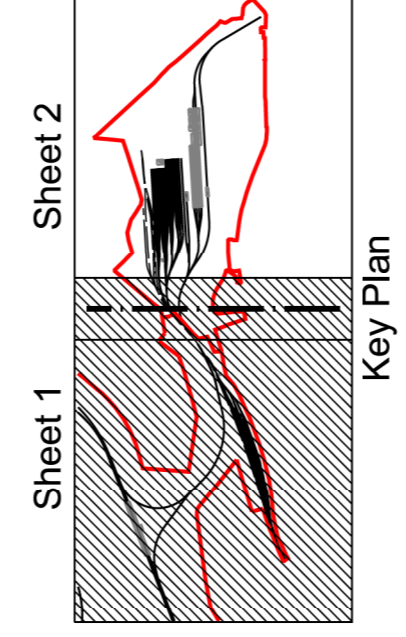


- Legend**
- Planning Application Boundary
 - Existing Watercourse
 - Proposed Catchment
 - Proposed Cut Off Ditch/Swale
 - Proposed Filler Drain
 - Proposed Culvert
 - Proposed Carrier Drain
 - Proposed Foul Drain
 - Proposed Foul Drain
 - Proposed Attenuation Pond Forebay
 - Proposed Attenuation Pond
 - Proposed Attenuation Pond
 - Existing DCWW Drainage Network

Notes

1. All dimensions are in metres unless noted otherwise. All elevations are in metres Above Ordnance Datum (AOD). Do not scale.
2. This drawing is for planning purposes only and is to be read in conjunction with the Drainage Strategy report.
3. For cut-off ditch typical details, refer to drawing C2505b.
4. The diameter of culverts and sizing of headwall structures are to be determined during subsequent design stages.
5. The attenuation ponds shown are indicative based upon the principles discussed in the drainage strategy report.
6. Foul drainage shown in this drawing and strategy is subject to agreement with DCWW. Foul strategy shown does not allow for trade effluent which, if required, is subject to discussion with DCWW and subsequently not shown.



Issue	Date	By	Chkd	Appd
P01	17/07/20	DO	IA	JS

Issued for Planning

ARUP

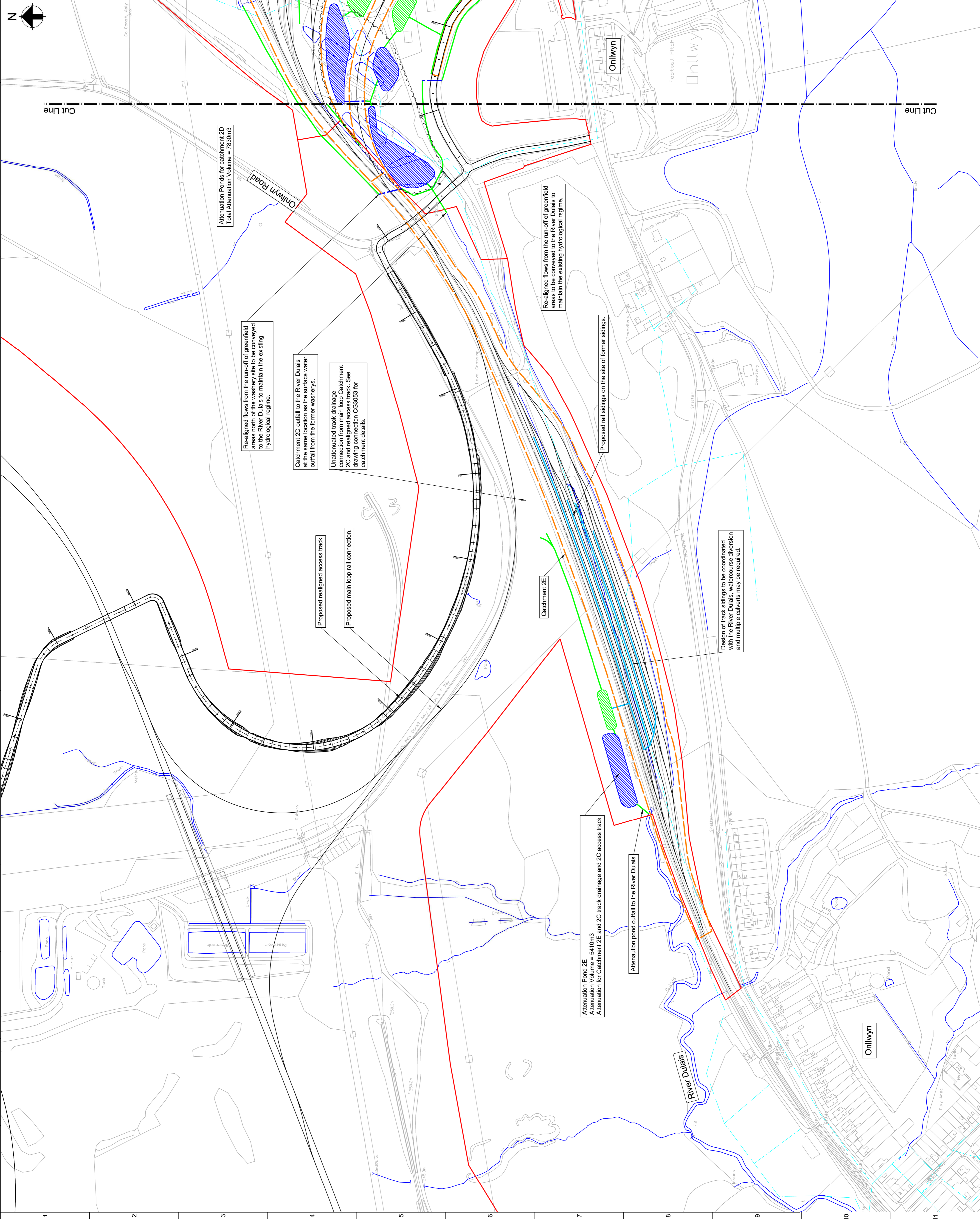
4 Plemhead St, Capital Waleside
Cardiff, CF10 2DP, UK
T +44(0)303 2047277
www.arup.com

Client
Welsh Government

Project Title
Global Centre for Rail Excellence

Drawing Title
**Washery Site
Proposed Drainage
Sheet 1 of 2**

Scale at A1	1:2000	Role
Subsidiary	Civil	
Job No		Rev
For Information		
Drawing No	264904	CG2504
		P01



Attenuation Ponds for catchment 2D
Total Attenuation Volume = 7830m³

Re-aligned flows from the run-off of greenfield areas north of the washery site to be conveyed to the River Dulais to maintain the existing hydrological regime.

Catchment 2D outfall to the River Dulais at the same location as the surface water outfall from the former washeries.

Unattenuated track drainage connection from main loop Catchment 2C and realigned access track. See drawing connection CG3053 for catchment details.

Proposed realigned access track

Proposed main loop rail connection.

Re-aligned flows from the run-off of greenfield areas to be conveyed to the River Dulais to maintain the existing hydrological regime.

Proposed rail sidings on the site of former sidings.

Design of track sidings to be coordinated with the River Dulais, watercourse diversion and multiple culverts may be required.

Attenuation Pond 2E - 5410m³
Attenuation for Catchment 2E and 2C track drainage and 2C access track.

Attenuation pond outfall to the River Dulais

