

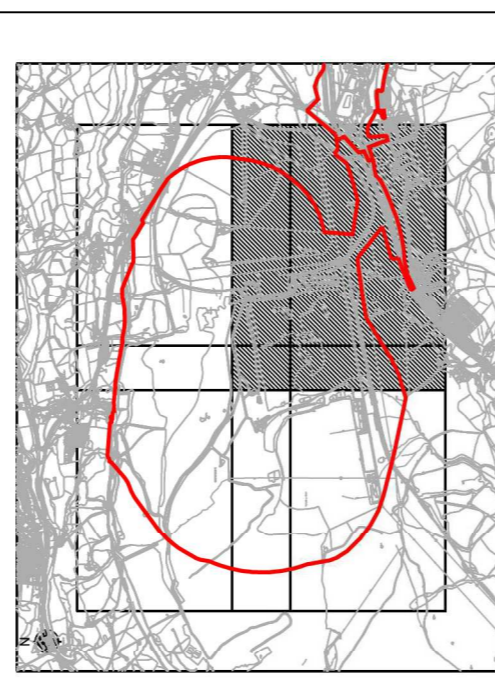
Legend

- Planning Application Boundary
- Existing Watercourse
- Restoration Watercourse to be Removed / Discontinued
- Restoration Watercourse to be Diverted
- Proposed Catchment
- Proposed Cut Off Ditch
- Proposed Pond
- Proposed Carrier Drain
- Proposed Filter Drain
- Proposed Culvert
- Proposed Carrier Drain
- Proposed Filter Drain

Notes

1. All dimensions are in metres unless noted otherwise. All elevations are in metres Above Ordnance Datum (AOD). Do not scale.
2. This drawing is for planning purposes only and is to be read in conjunction with the Drainage Strategy report.
3. For cut-off ditch typical details, refer to drawing CG3055.
4. The diameter of culverts and sizing of headwall structures is to be determined during subsequent design stages.
5. Existing watercourses that will be removed as part of the site restoration works have not been shown for clarity.
6. The restoration watercourses have been shown based on the current restoration proposals for the site. Should the restoration works be undertaken at the same time as the proposed works, the restoration watercourses shown as to be removed will not be installed.
7. The attenuation ponds shown are indicative based on the sizing determined from hydraulic calculations as discussed in the Drainage Strategy report. The depth and profile may change in subsequent design stages to accommodate topography and improve aesthetics.

Keyplan



PD2	12/03/21	DS	JS	JS	JS
Drawing Updated					
PD1	17/07/20	DO	IA	JS	JS
Issued for Planning					
Issue	Date	By	Checked	Approved	

ARUP

4 Plinthead St, Capital Waleside
 Cardiff, CF10 2AZ, UK
 T +44(0)303 2047277
 www.arup.com

Client
Welsh Government

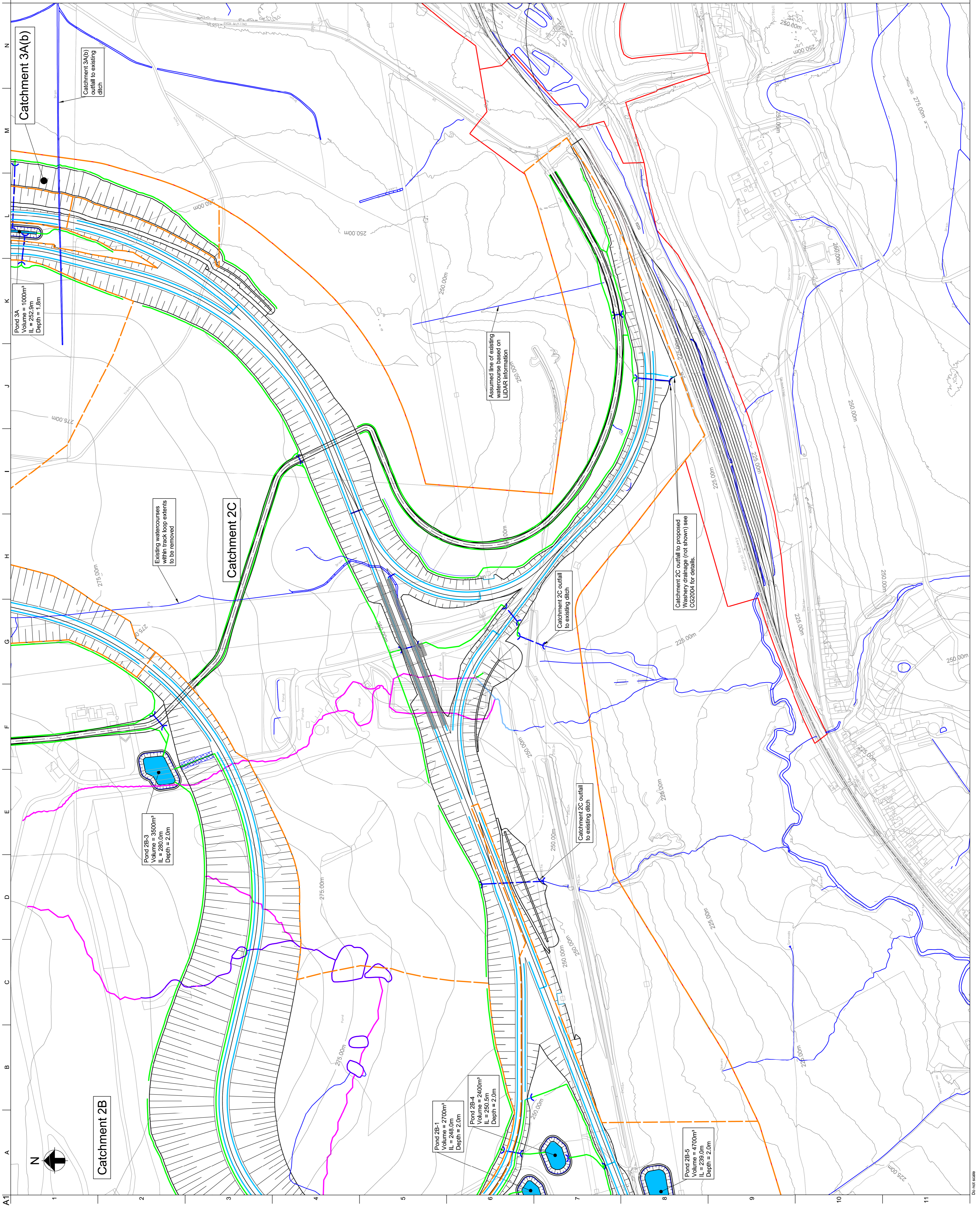
Job Title
Global Centre for Rail Excellence

Drawing Title
Proposed Drainage
 Sheet 4 of 4

Scale of A1
 1:2500

Discipline
 Infrastructure

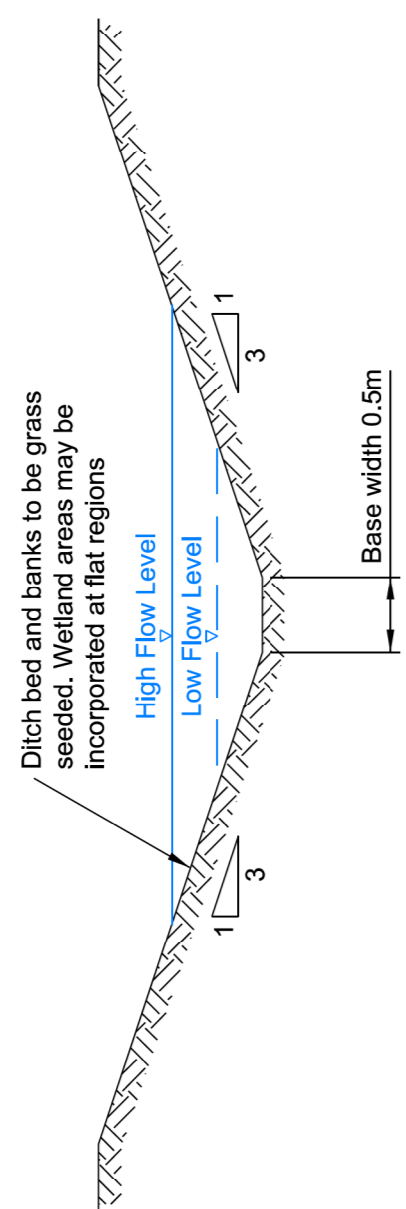
For Information
 Drawing No
CG3053
 Job No
264904
 Issue
P02



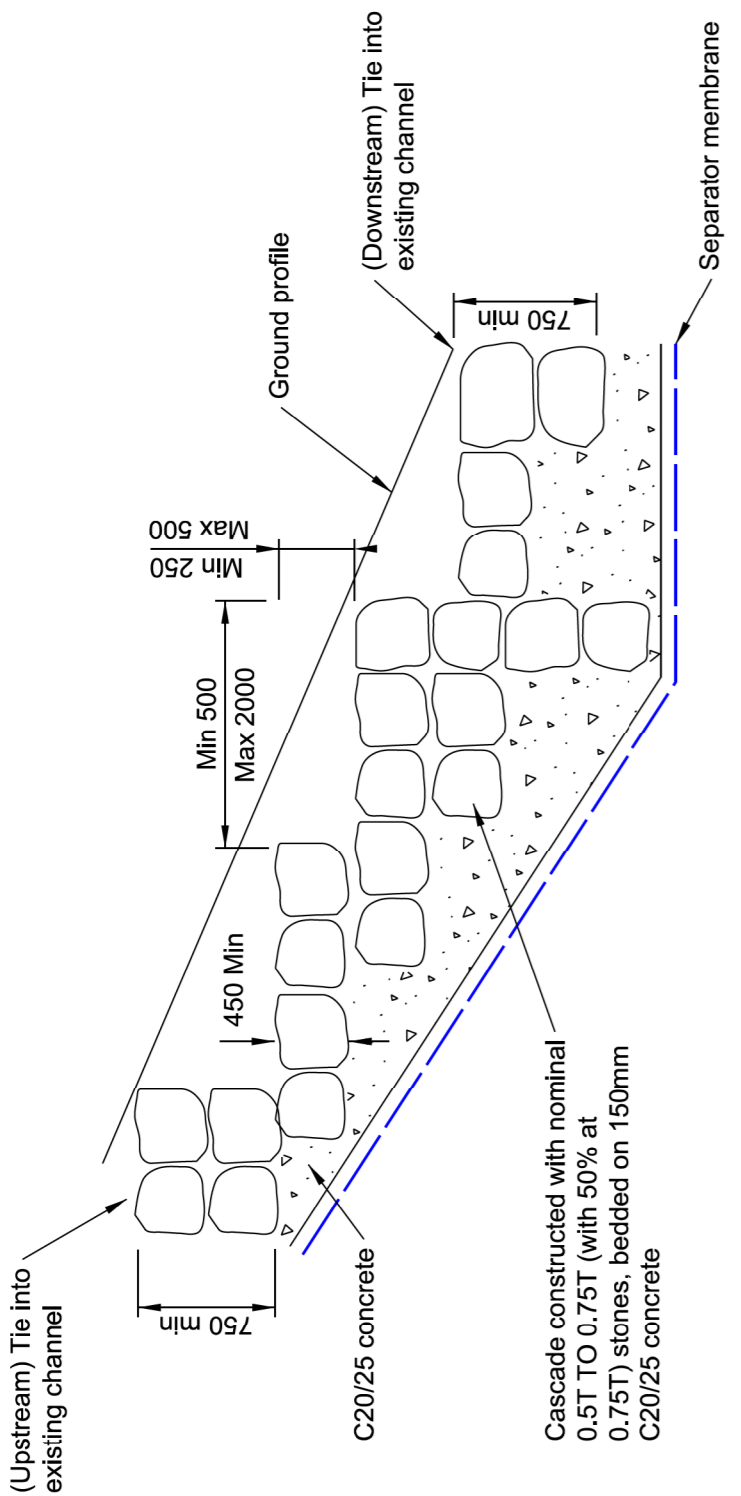
- Notes**
- All dimensions are in metres unless noted otherwise. All elevations are in metres Above Ordnance Datum (AOD). Do not scale.
 - This drawing is for planning purposes only and is to be read in conjunction with the Drainage Strategy report.
 - For drainage plans, refer to CG3050 to CG3053.
 - Grass lined channels to be used in areas of shallow longitudinal gradient, low flow and low velocity. Stone lined channels to be used in locations of medium longitudinal gradient and medium flow and velocity. Rock reinforced channels to be used in high velocity areas steeper than 1:12.
 - Details shown for information only, subject to detailed design.

A1 1 2 3 4 5 6 7 8 9 10 11

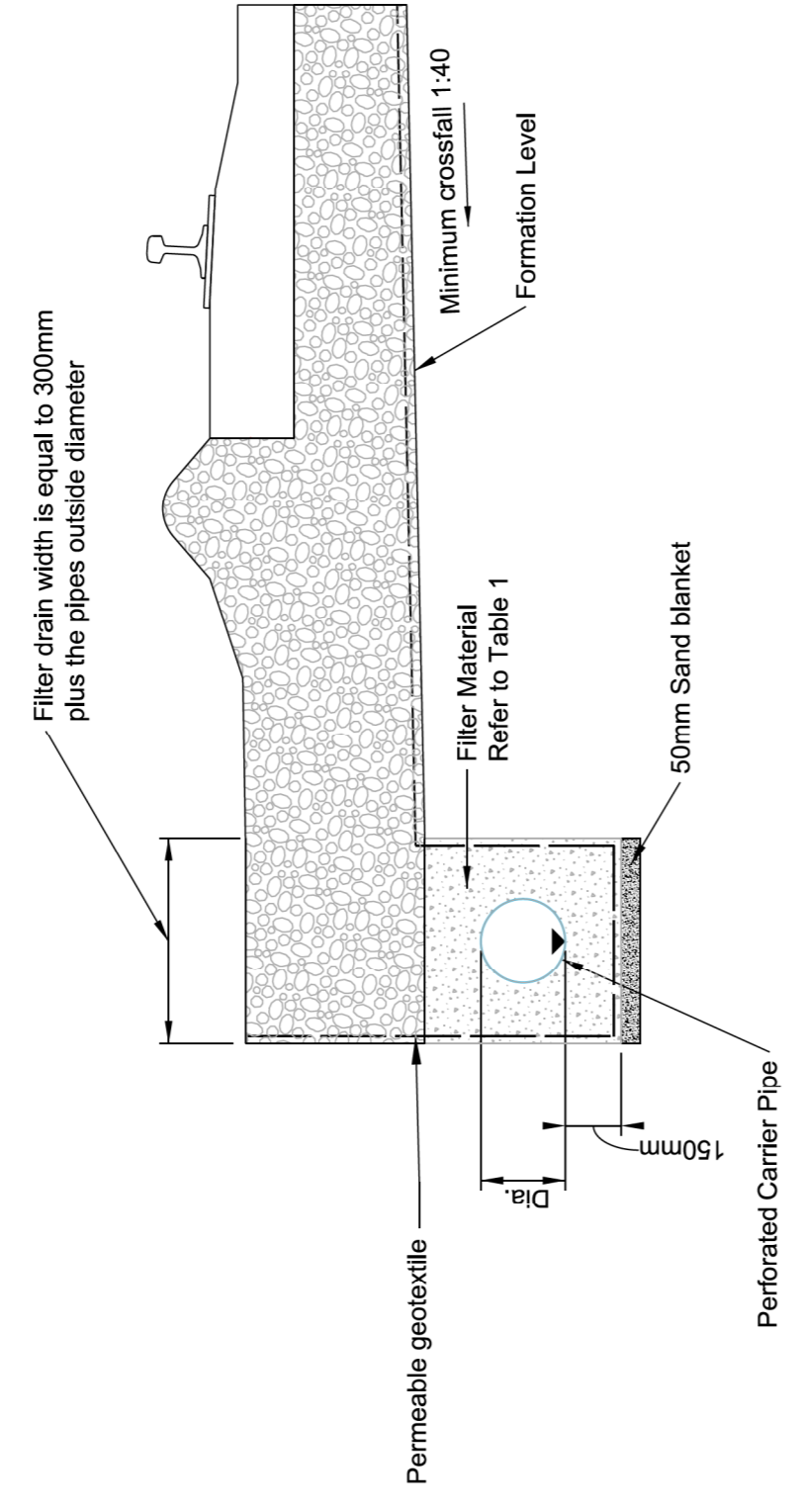
N M L K J I H G F E D C B A



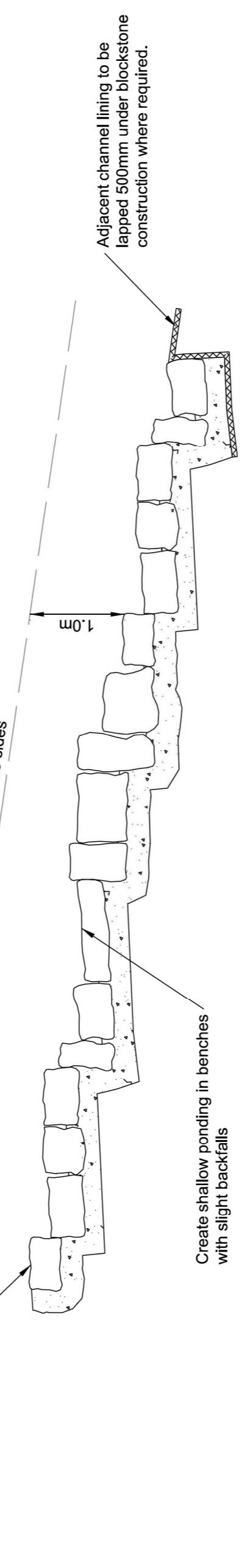
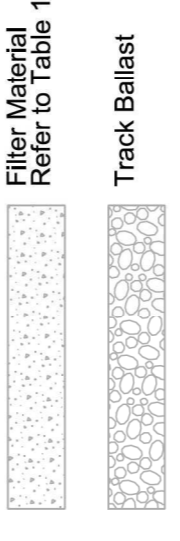
Typical Section - Grass Lined Channel (See Note 4)
N.T.S.



Typical Cascade Detail
N.T.S.



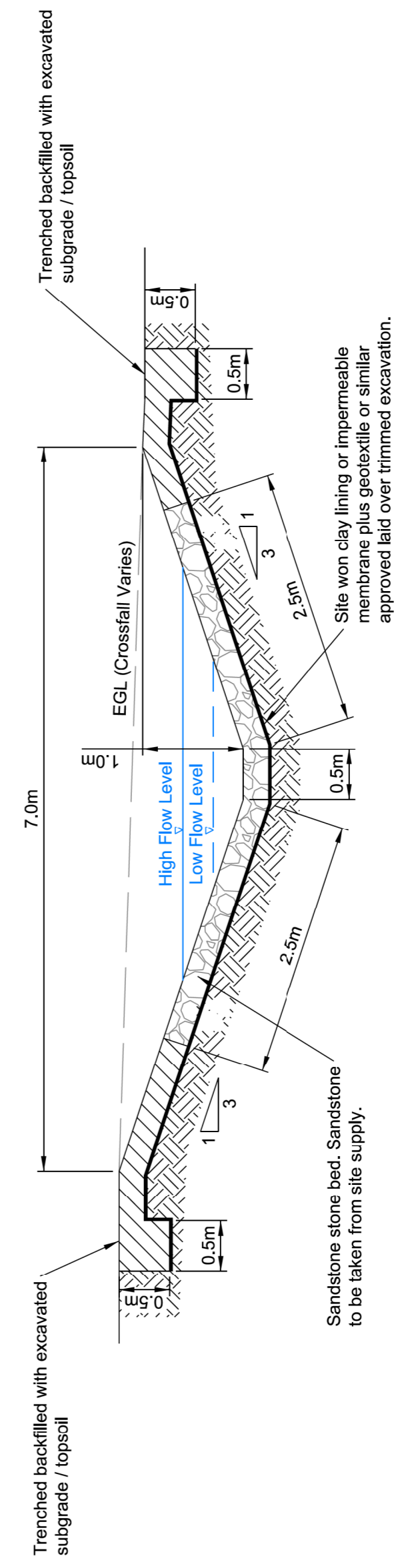
Example Filter / Track Drainage
N.T.S.



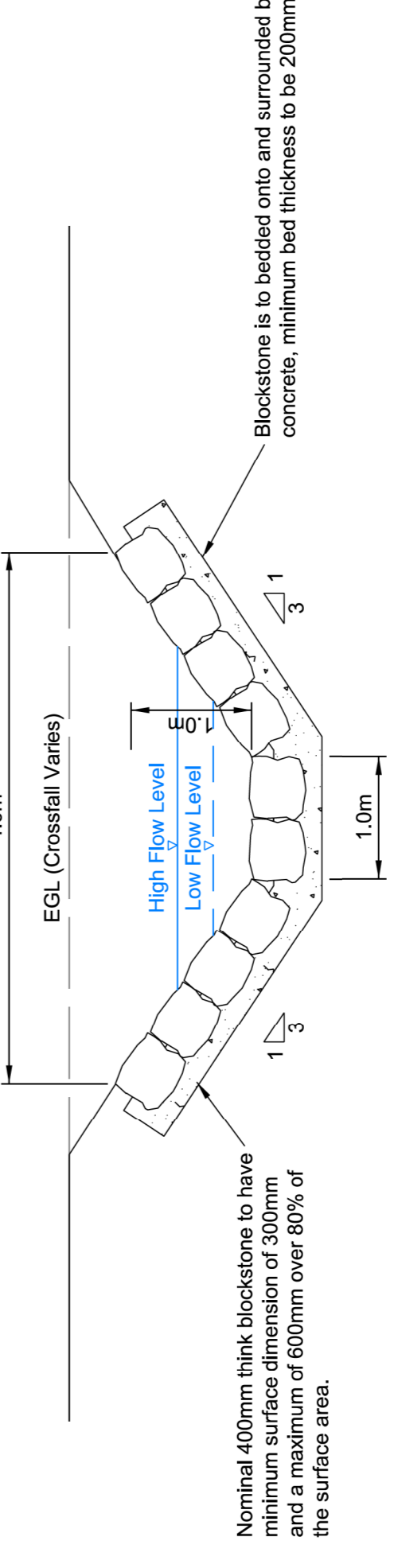
Typical Longitudinal Section - Rock Reinforced Ditch
N.T.S.

Aggregate to BS 12620	Aggregate to BS 12620
10, 14 or 20mm Nominal Single Size Or 14 to 5mm Graded Or 20 to 5mm Graded	10, 14 or 20mm Nominal Single Size Or 14 to 5mm Graded Or 20 to 5mm Graded Or 40 to 5mm Graded
140 to 400	> 400
OR IN ACCORDANCE WITH PIPE MANUFACTURERS BEDDING SPECIFICATION	

Table 1 - Example Requirements For Pipe Bedding And Filter Details



Typical Section - Stone Bedded Ditch (See Note 4)
N.T.S.



Detail C - Rock Reinforced Ditch (See Note 4)
N.T.S.

P01	17/07/20	DO	IA	JS
Issued for Planning				
Issue	Date	By	Chkd	Apprd

ARUP

4 Pleinhead St, Capital Waleside
Cardiff, CF10 2DT, F +44(0)30 2072277
www.arup.com

Client
Welsh Government

Job Title
Global Centre for Rail Excellence

Drawing Title
Typical Channel and Pond Details

Scale: as A1
As Shown

Discipline
CIVILS

Drawing Status
For Information

Job No
264904

Drawing No
CG3055

Issue
P01