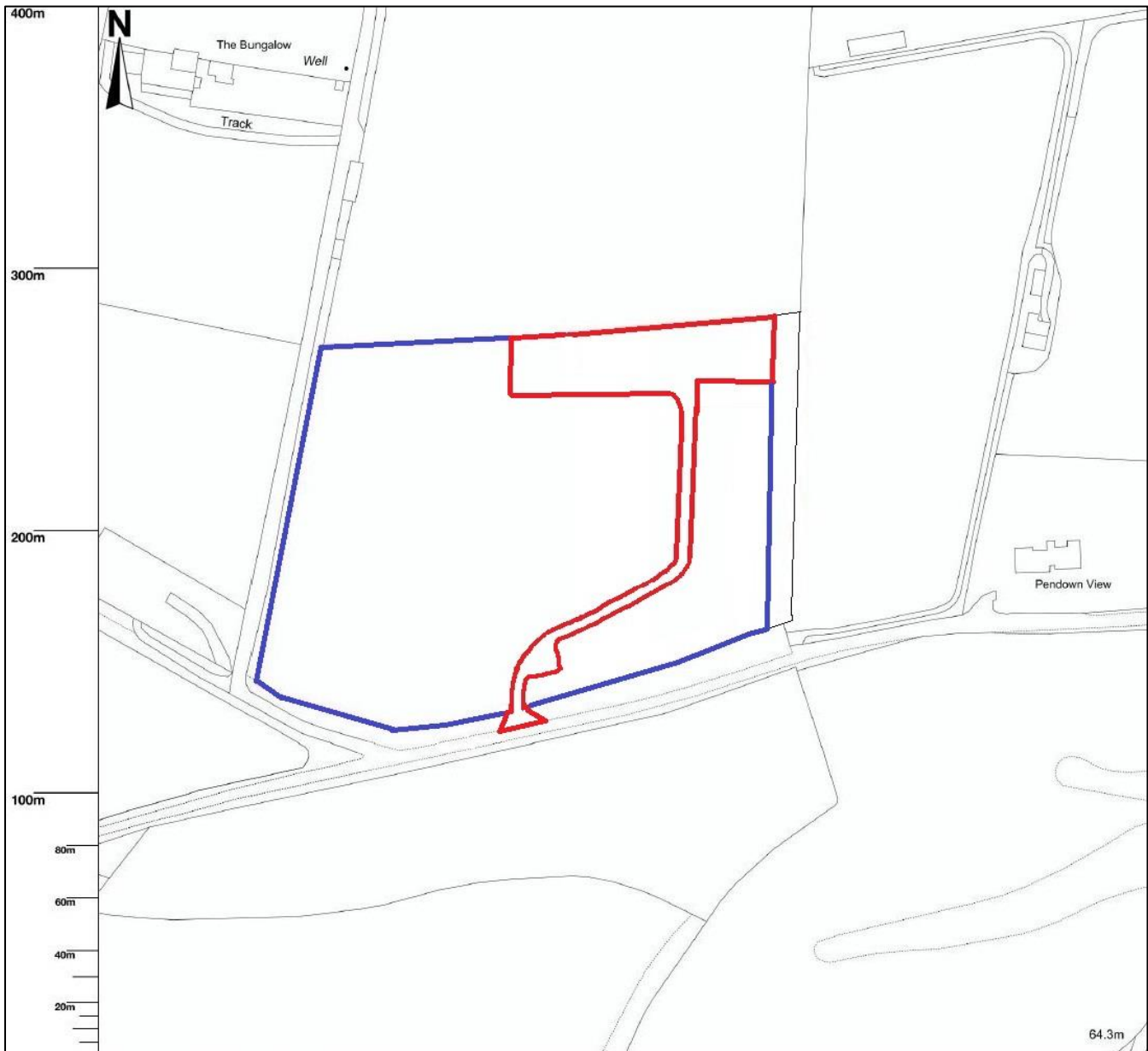


Land west of Pendown View, Killiow, Kea, TR3 6AE



Scale: 1:2500 @ A4

Map area bounded by: 180248,42548 180648,42948. Produced on 28 October 2020 from the OS National Geographic Database. Reproduction in whole or part is prohibited without the prior permission of Ordnance Survey. © Crown copyright 2020. Supplied by UKPlanningMaps.com a licensed OS partner (100054135). Unique plan reference: p16buk/527298/714375