



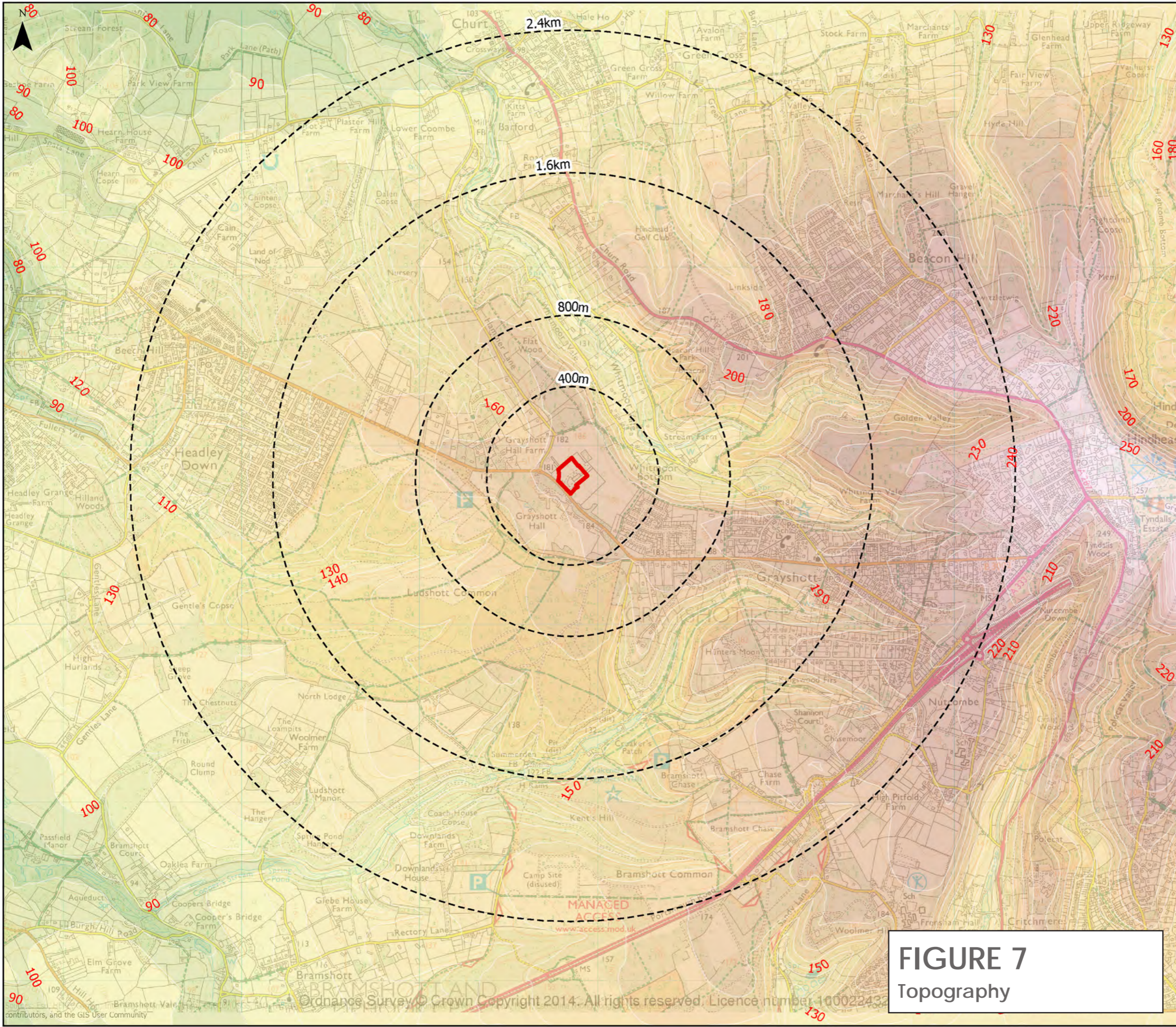
Site Boundary

FIGURE 6
Aerial Drone Imagery



Applegarth Farm, Grayshott, Hindhead
Aerial Drone Imagery

drawn by	checked by	date
SDJ	TBR	Jan 21
job/FIG no.	scale	paper size
291-Figure 6	NTS	A3



NOTES
Do not scale this drawing. All discrepancies to be clarified with project Landscape Architect.
This drawing is the property of Urban Wilderness Ltd and is issued on the condition it is not reproduced, retained or disclosed to any unauthorised person, either wholly or in part without written consent of Urban Wilderness Ltd.

Site Boundary [Red outline]

Site Study Area [Dashed black outline]

Topographic values

- [Green] ≤60
- [Light Green] ≤70
- [Yellow-Green] ≤80
- [Yellow] ≤90
- [Light Yellow] ≤100
- [Yellow-Orange] ≤110
- [Orange] ≤120
- [Light Orange] ≤130
- [Orange] ≤140
- [Light Orange] ≤150
- [Orange] ≤160
- [Light Brown] ≤170
- [Brown] ≤180
- [Light Brown] ≤190
- [Brown] ≤200
- [Light Brown] ≤210
- [Brown] ≤220
- [Light Brown] ≤230
- [Pink] ≤240
- [Light Pink] ≤250
- [Pink] ≤260
- [Light Pink] ≤270

rev	details	date



7 Saw Mill Yard, Water Lane, Holbeck, Leeds
LS11 5WH
www.urbanwilderness.co.uk
design@urbanwilderness.co.uk
0113 4720 300
Registered in Scotland SC371979

client
Big Apple Ventures

project
Applegarth Farm

drawing title
**Landscape and Visual Impact Assessment
Topography**

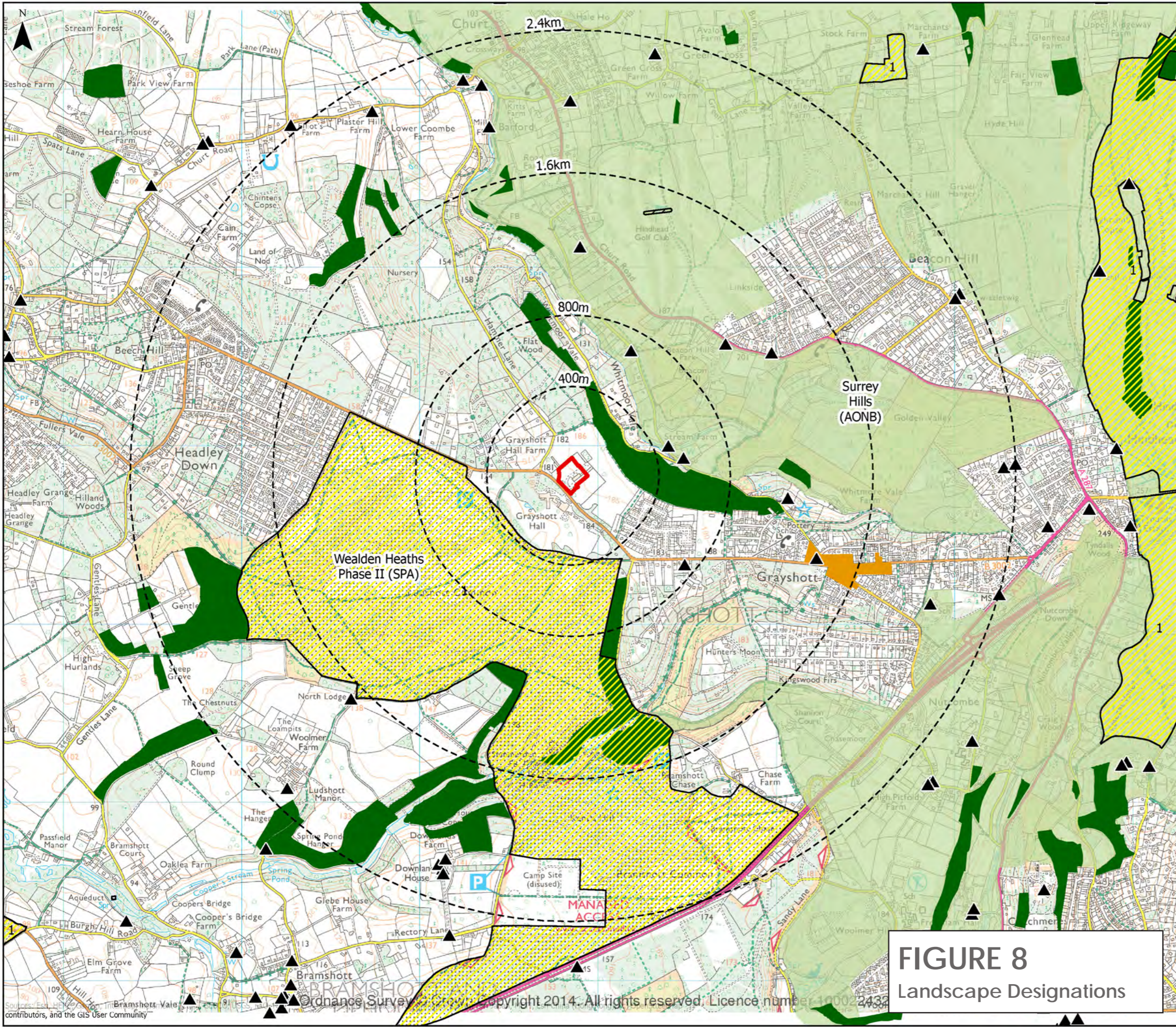
drawing status
PLANNING

drawn by	checked by	date
LJM	TBR	25 Feb 21

scale	paper size
1:20,000	A3

job/dwg no.	rev.
291-UW-P-003	-

FIGURE 7
Topography



NOTES
 Do not scale this drawing. All discrepancies to be clarified with project Landscape Architect.
 This drawing is the property of Urban Wilderness Ltd and is issued on the condition it is not reproduced, retained or disclosed to any unauthorised person, either wholly or in part without written consent of Urban Wilderness Ltd.

- ▭ Site Boundary
- Site Study Area
- ▲ Grade II Listed Buildings
- Sites of Special Scientific Interest (SSSI)
- Scheduled Monuments
- Ancient Woodland
- Grayshott Conservation Area
- Areas of Outstanding Natural Beauty (AONB)
- Special Protection Areas (SPA)

rev	details	date



7 Saw Mill Yard, Water Lane, Holbeck, Leeds
 LS11 5WH
www.urbanwilderness.co.uk
design@urbanwilderness.co.uk
 0113 4720 300
 Registered in Scotland SC371979

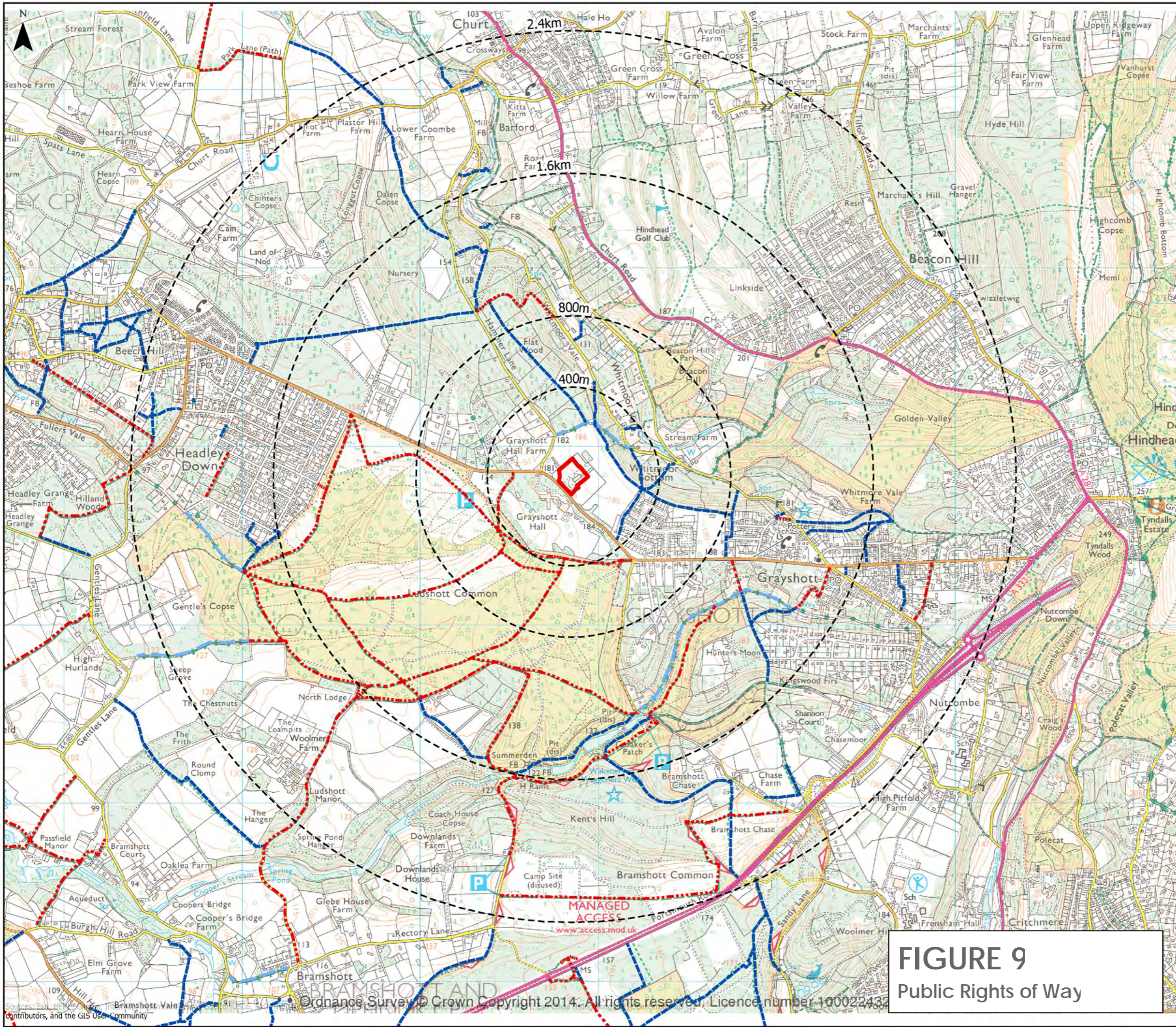
client
Big Apple Ventures

project
Applegarth Farm

drawing title
**Landscape and Visual Impact Assessment
 Landscape Designations**

drawing status		
PLANNING		
drawn by	checked by	date
LJM	TBR	25 Feb 21
scale	paper size	
1:20,000	A3	
job/dwg no.	rev.	
291-UW-P-004	-	

FIGURE 8
Landscape Designations



NOTES
 Do not scale this drawing. All discrepancies to be clarified with project Landscape Architect.
 This drawing is the property of Urban Wilderness Ltd and is issued on the condition it is not reproduced, retained or disclosed to any unauthorised person, either wholly or in part without written consent of Urban Wilderness Ltd.

- Site Boundary
- Site Study Area
- Byway Open to All Traffic
- Bridleway
- Public Footpath
- Restricted Byway

rev details date



7 Saw Mill Yard, Water Lane, Holbeck, Leeds
 LS11 5WH
www.urbanwilderness.co.uk
design@urbanwilderness.co.uk
 0113 4720 300
 Registered in Scotland SC371979

client
Big Apple Ventures
 project
Applegarth Farm

drawing title
**Landscape and Visual Impact Assessment
 Rights of Way**

drawing status PLANNING		
drawn by LJM	checked by TBR	date 25 Feb 21
scale 1:20,000		paper size A3
job/dwg no. 291-UW-P-006		rev. -

FIGURE 9
Public Rights of Way