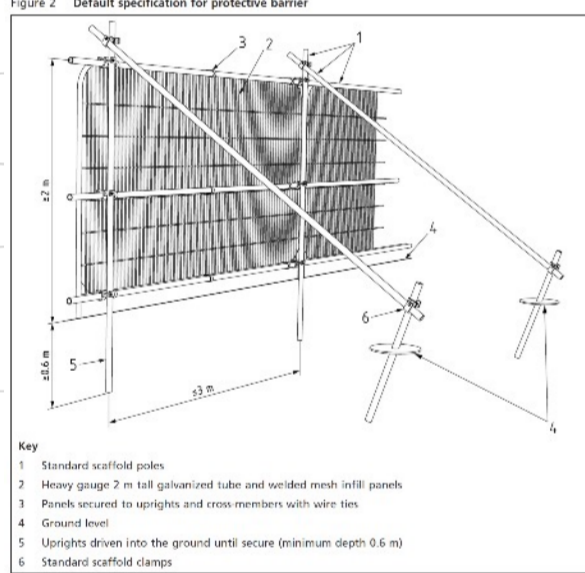
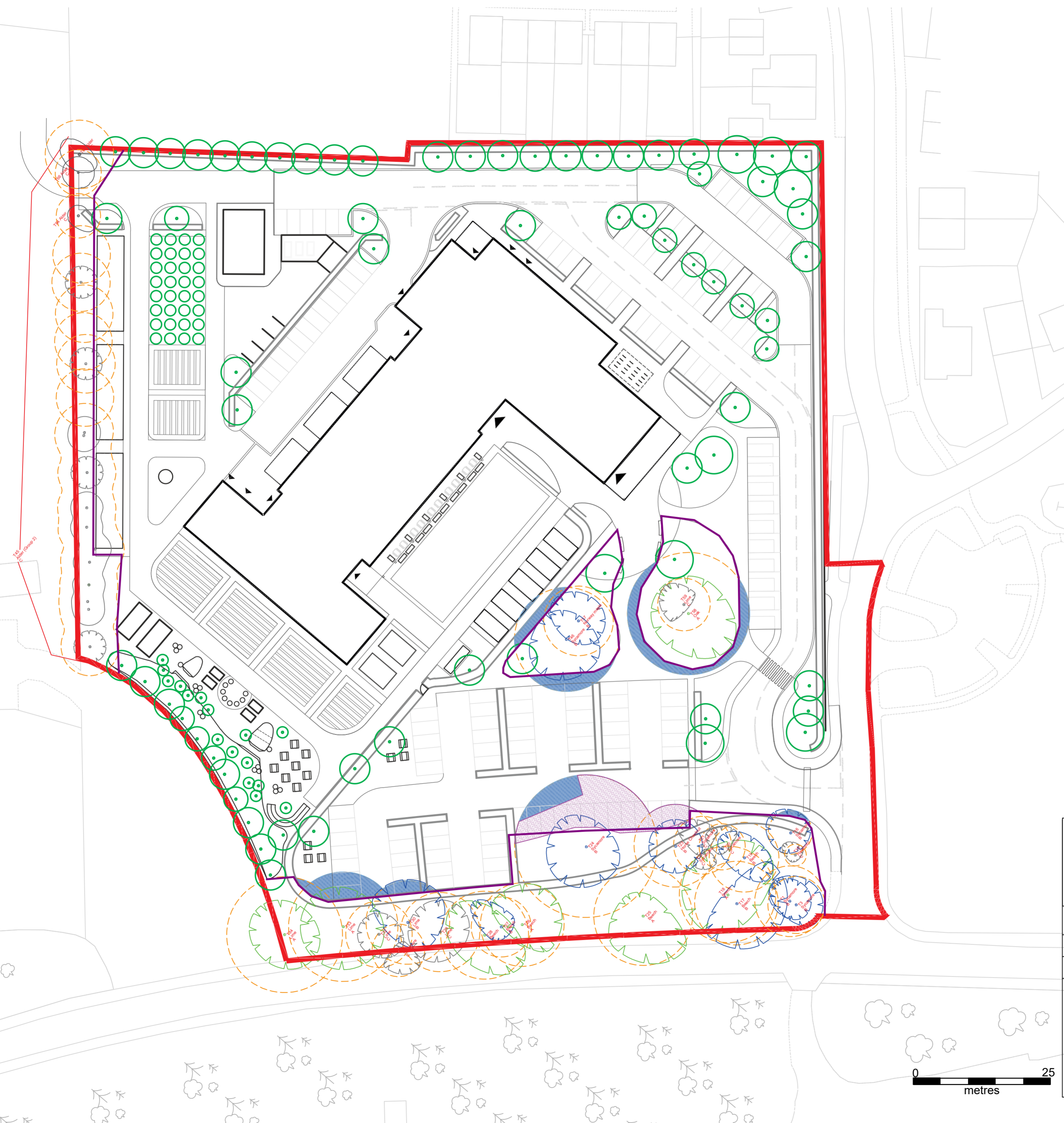
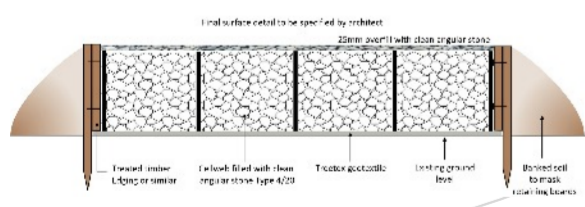


- KEY**
- Red line
  - Proposed Tree
  - Root Protection Area (RPA)
  - No-Dig Construction method required
  - Existing asphalt surface within RPA to be removed and top surface replaced with new asphalt.
  - Category A\* Tree (For Retention)
    - T18 Beech
    - T25 Beech
    - T26 Beech
    - T28 Beech
    - T28 Beech
    - T33 Lime
    - T34 Lime
    - T58 Oak
  - Category B\* Tree (For Retention)
    - T1 Sycamore
    - T3 Sycamore
    - T16 Sycamore
    - T17 Beech
    - T19 Beech
    - T23 Horse Chestnut
    - T24 Sycamore
    - T27 Beech
    - T30 Lime
    - T46 Sycamore
    - T57 Norway Maple
  - Category C\* Tree (For Retention)
    - T15 Hawthorn
    - T20 Sycamore
    - T21 Sycamore
    - T22 Sycamore
    - T29 Lime
    - T31 Sycamore
    - T32 Lime
    - T45 Group 2 Alder
    - T59 Lime
    - T64 Alder
    - T66 Alder
    - T67 Alder

Figure 2 Default specification for protective barrier



Sign to be attached to protective fencing



**MARTIN DOBSON ASSOCIATES**  
 ARBORICULTURAL CONSULTANCY

info@martindobson.org.uk / 01420 488342

Site: Applegarth Farm, Grayshot, Hampshire, GU26 6JL 1:500@A2

Plan - Tree Retention Plan Feb 2021

**Key:**

- Category A
- Category B
- Category C
- Category U

**Category**

- Category A
- Category B
- Category C
- Category U

**Root Protection Area**

- Root Protection Area

**2 m high protective fencing**

- 2 m high protective fencing

**Ground protection**

- Ground protection

**Crown Spread**

- Crown Spread

**Tree Number**

- Tree Number

**Species**

- Species

**Category**

- Category

