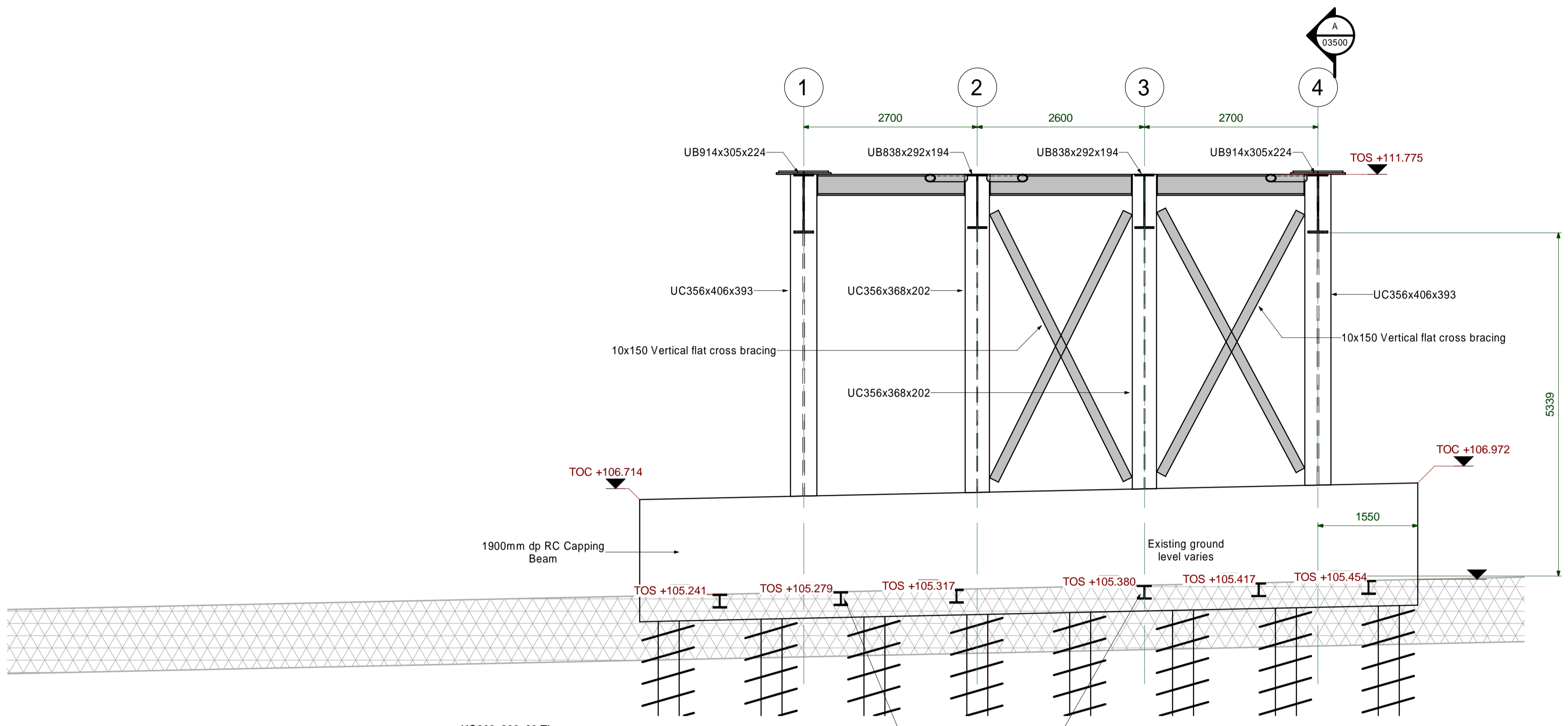
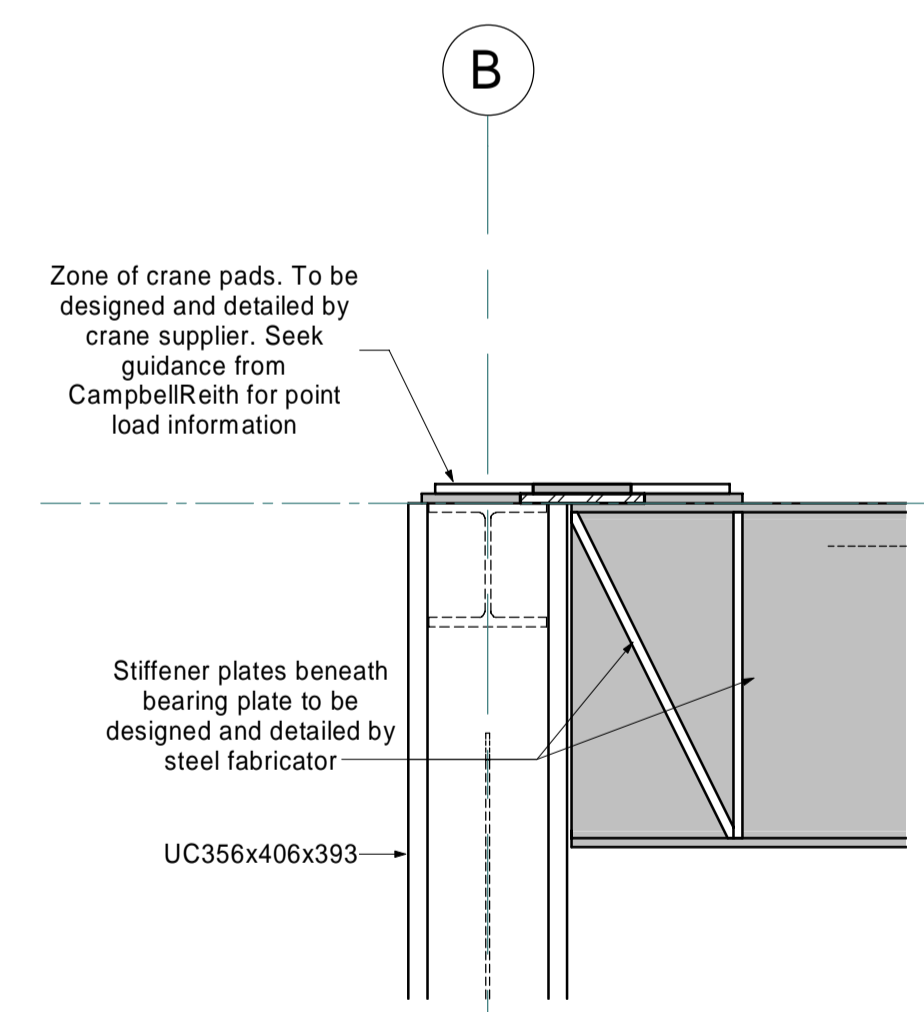


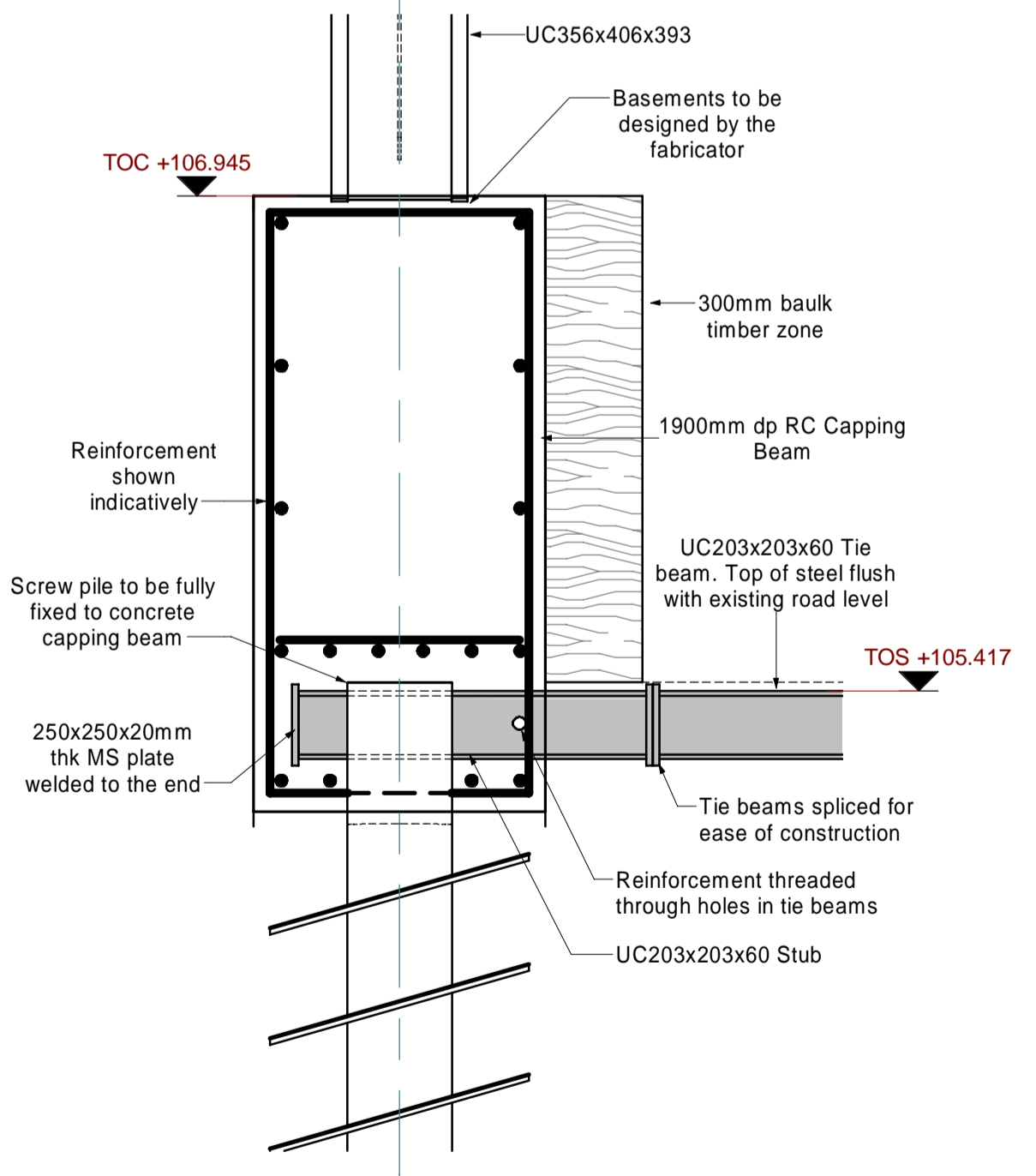
**A Section**  
1 : 50



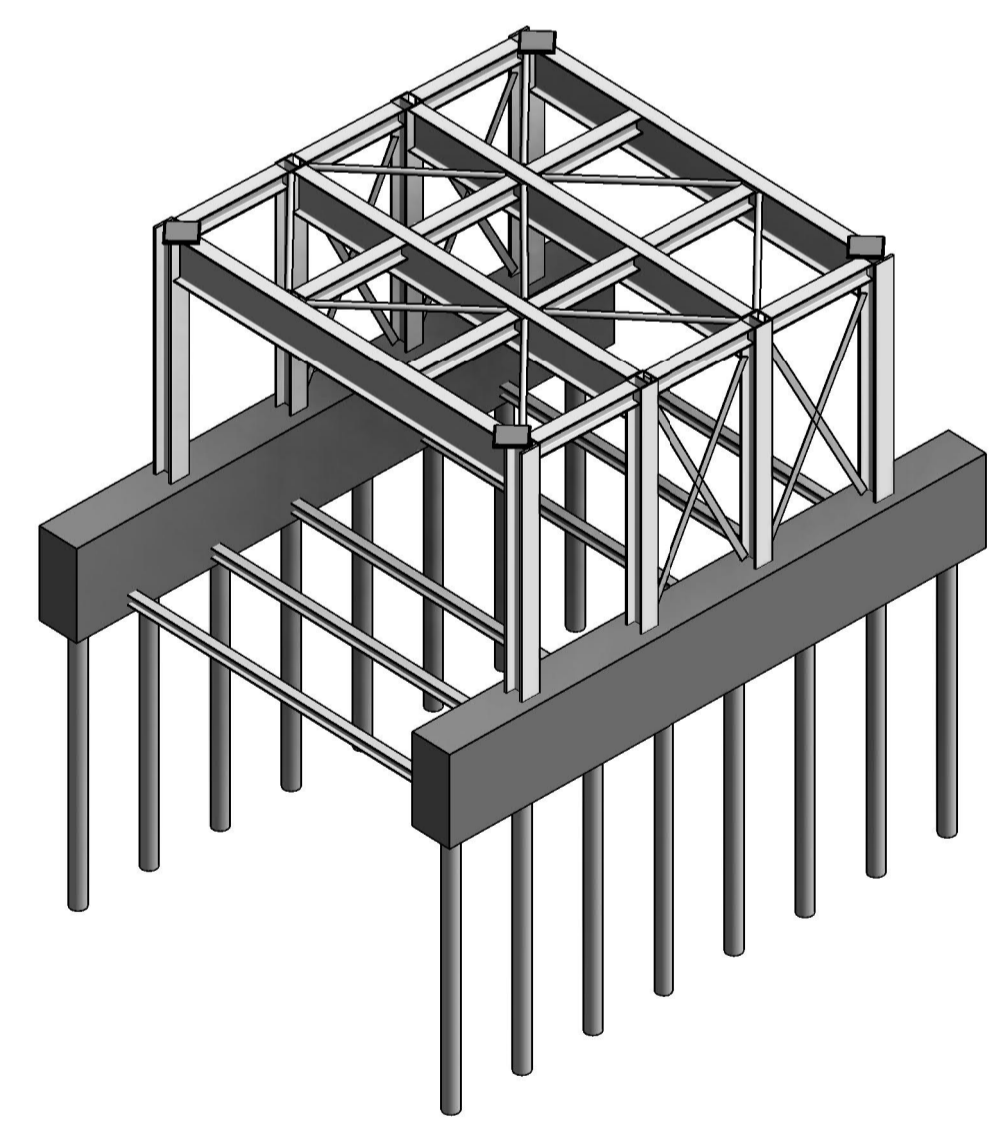
**B Section**  
1 : 50



**1 Detail**  
1 : 20



**2 Detail**  
1 : 20



**Full Isometric View**

- Notes:-**
- All pile loads to be designed for a minimum of:
    - Vertical load = 700kN (SLS)
    - Horizontal load = 60kN (SLS) and
    - Moment = 100kNm (SLS)
  - All steelwork to have a minimum connection force of:
    - Moment = 25kNm
    - Shear = 75kN
    - Tension = 75kN
  - All steelwork connections directly supporting crane loads are also to be checked for fatigue resistance in accordance with BS EN 13001-3-1 (as documented by CIRIA C761 "Tower Crane Construction and Tie Design" Clause A2.2).

**Notes**

- Do not scale from this drawing on print or electronically. Work from figured dimensions only.
- No deviation from the details on this drawing is allowed without CampbellReith's prior permission in writing.
- Read this drawing with all Architect's, Service Engineer's and CampbellReith's relevant details, specifications and drawings.
- All work is to be done in accordance with the relevant specifications issued by CampbellReith, British Standard Codes of Practice, Statutory Requirements and the Contract Documents.
- Drawing status:
  - P: Preliminary Evolving drawings for approvals, tenders, billings etc.
  - C: Construction Fully developed drawings issued under instructions for construction
  - 6: Only status C drawings to be used for construction.
- Submittal code:
  - Work in progress
  - S0 - Work in progress
  - Shading (Non-continuous)
  - S1 - For coordination, S2 - For information, S3 - For internal review and comment, S4 - For construction approval.
  - Documentation (For contractor purposes)
  - D1 - For Costing, D2 - For Tender, D3 - For contractor design, D4 - for manufacturer/procurement.
  - Construction
  - A - For construction, B - For construction but with comments (i.e. areas in abeyance), CR - Construction Record (Final Construction ONLY. Any deviations to that which is on site is not the liability of CampbellReith)

**CampbellReith**  
consulting engineers

London 020 7340 1700 Manchester 0161 819 3060  
 Surrey 01737 784 500 Birmingham 01675 467 484  
 Bristol 0117 916 1066 Dubai 00 971 4345 7088

© CampbellReith Hill LLP 2020 CR Project No.: 13367

REV	DATE	DESCRIPTION
P05	05.10.2020	Gridlines simplified and relocated.
P04	28.08.2020	Steel beam and column sizes revised. Tie beams added and locations adjusted. Details 1 and 2 added.
P03	20.07.2020	Pile sizes revised.
P02	14.07.2020	Tie beams added flush with existing road. North end foundation moved West by 500mm.
C01	08.07.2020	Issued for planning.

Bulding: 000NE-Northen Estates	Drawing Title: Northern Estates Crane Gantry Section A and B
Project Title: 000NE-Northen Estates	Drawing No.: 2131-CRH-90-ZZ-S-XX-DR-03500
Drawing Status: S2 - Suitable for Information	Date: 07.01.20
Drawn By: AJT	Scale @ A1: As indicated
Approved By: BS	Rev: C01

**HOUSES OF PARLIAMENT**

Parliamentary Estates Directorate  
 14 Tothill Street  
 London SW1H 9NB