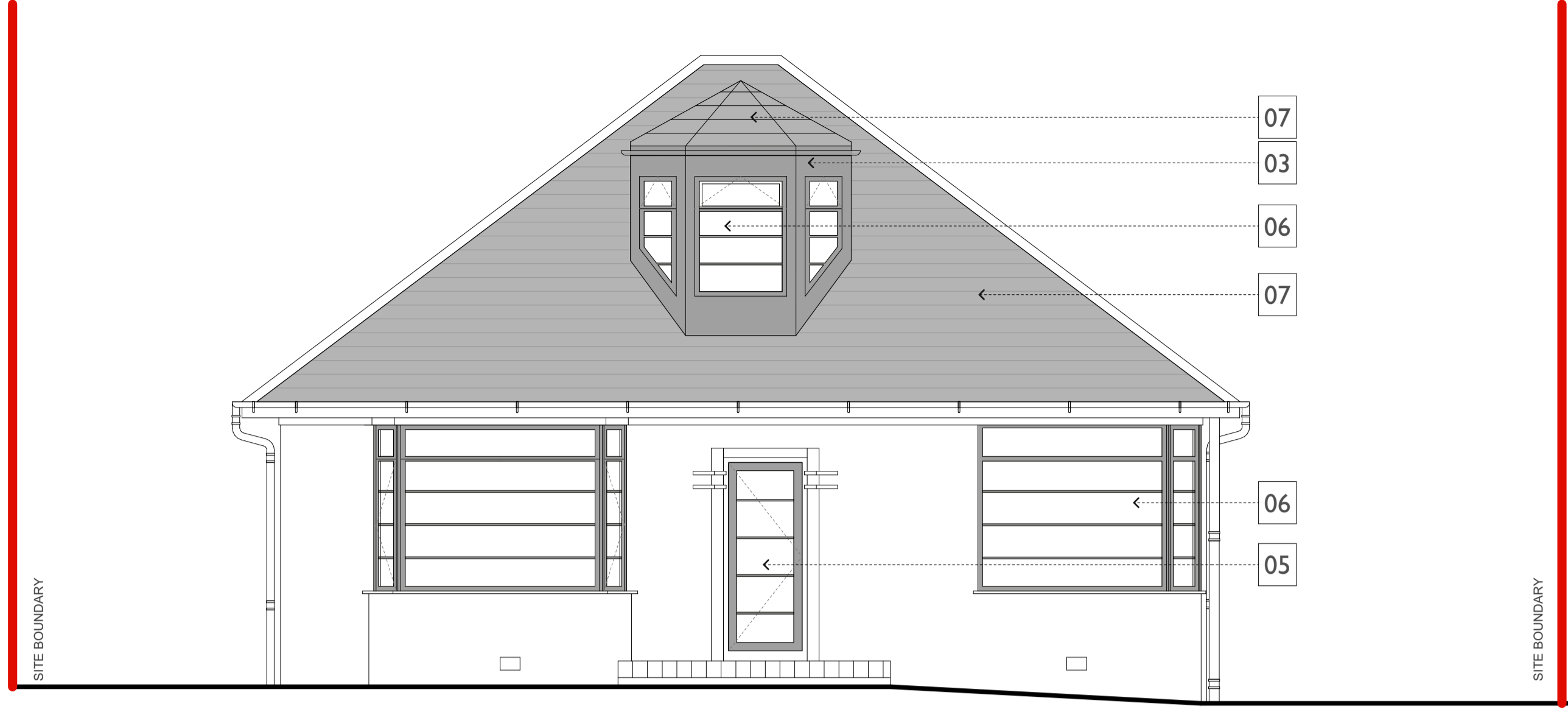
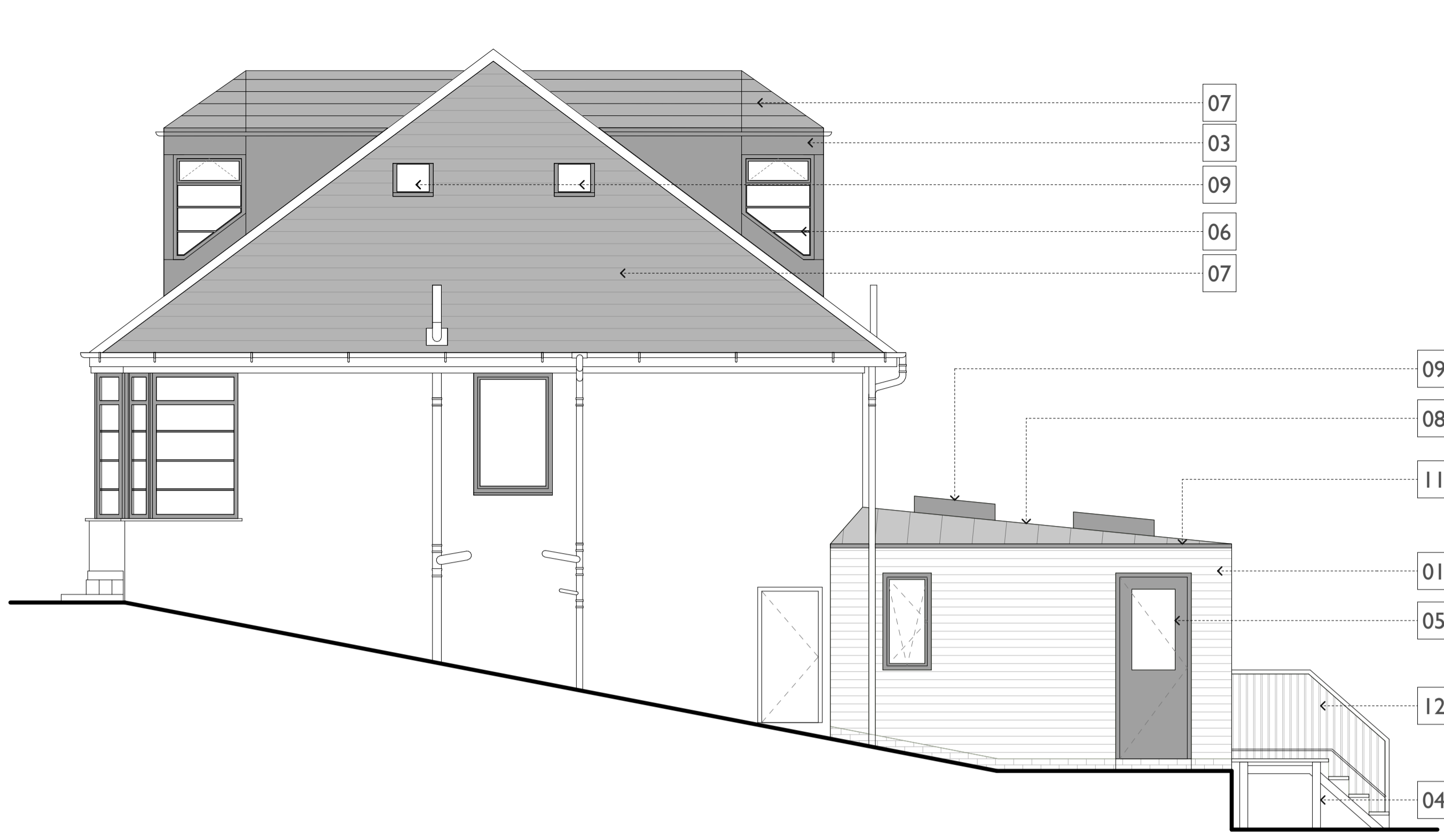


- PROPOSED MATERIALS KEY:**
- HORIZONTAL NATURAL TIMBER CLADDING
 - THROUGH-COLOURED RENDER, COLOUR TBC
 - PPC PAINTED ALUMINIUM CLADDING
 - FACING BRICK CLADDING
 - CLEAR GLAZED ALUMINIUM DOOR SYSTEM WITH PPC PAINT FINISH
 - CLEAR GLAZED ALUMINIUM WINDOW SYSTEM WITH PPC PAINT FINISH
 - CONCRETE ROOF TILE
 - SINGLE-PLY POLYMERIC ROOFING MEMBRANE, GREY
 - CLEAR GLAZED VELUX ROOF WINDOWS
 - PPC PAINTED ALUMINIUM RAINWATER GOODS
 - PPC PAINTED ALUMINIUM FLASHING
 - TIMBER DECK AND STEPS WITH PAINTED MILD STEEL RAILINGS



Proposed South Elevation

1:50



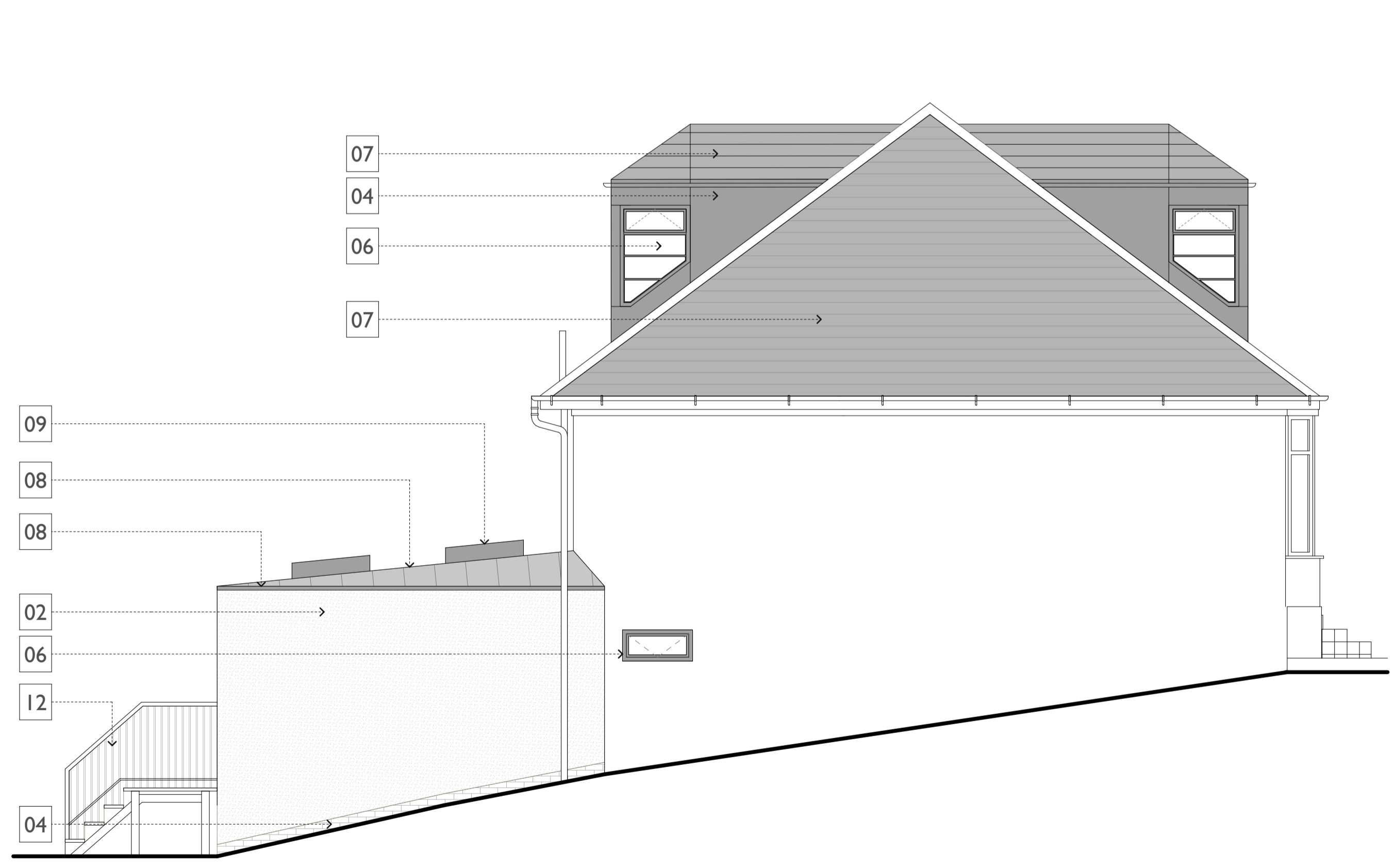
Proposed East Elevation

1:50



Proposed North Elevation

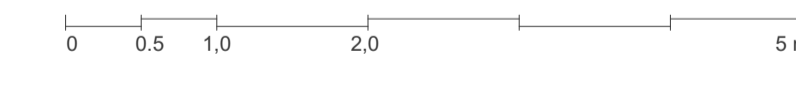
1:50



Proposed West Elevation

1:50

REV	DATE	DESCRIPTION	DRAWN	CHECK
-	28.03.21	Draft Planning Issue	GW	CH



architects
Dyer

T +44 (0)1386 764 716
 www.groupdyer.com

DRAWING STATUS
 -
 PROJECT
 Laing House

TITLE
 Proposed Elevations

SCALE (A1)
 1:50

PROJECT NO. / DRAWING NO.
 21005-A(GA)P-302