

# whitworth

18 Hatter Street, Bury St Edmunds, Suffolk IP33 1NE

T: 01284 760421

E: [info@whitworth.co.uk](mailto:info@whitworth.co.uk)

W: [www.wcp-architects.com](http://www.wcp-architects.com)

## WORKS TO THE ROYAL OAK, MONK SOHAM

### WINDOW SCHEDULE

Note! All room references are in relation to existing plan drawing no 01

Ground Floor	
Kitchen east 	Overall in good condition, C19, well detailed with monkey tail ironmongery. Small amount of local repair to leftmost casement and cill. Repair and redecorate.
Bathroom north 	C20, Modern window with deterioration to cill and casements, replace with sympathetic detailed casement with slimlite glazing
Study north 	Overall in good condition, well detailed C19, with monkey tail ironmongery. Small amount of local repair required. Repair and redecorate.
Study south	



Overall in good condition, uniquely proportioned window. C19. Cill in poor condition. Replace cill, repair and redecorate.



Dining room east



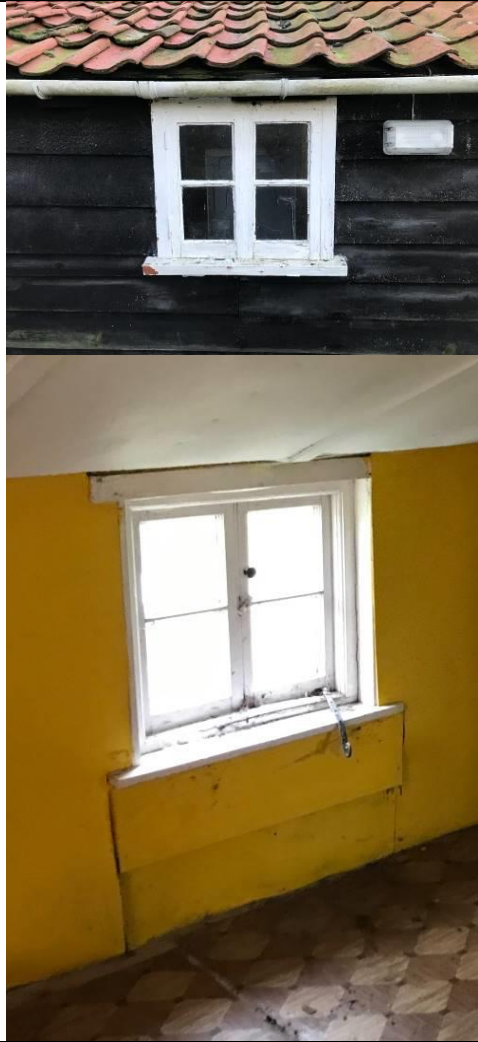
Dining room west

Modern window midC20 with deterioration to cill and casements, replace with sympathetic detailed casement with slimlite glazing



Sitting room west

	<p>Modern window midC20 with deterioration to cill and casements, replace with sympathetic detailed casement with slimlite glazing</p>
<p>Rear lobby east</p>	<p>Modern window midC20 in Ok condition, to be removed.</p>
	
<p>Rear lobby west (internal)</p>	<p>Horizontal sliding sash, installed presumably when the dwelling was used as a public house. In good condition and an important feature of the development of the dwelling, to be retained.</p>
	
<p>Lean-to store north</p>	<p>Modern window, midC20 replace with sympathetic detailed casement with slimlite glazing</p>
	
<p>Lean-to store east</p>	



Smaller traditional C19 casement at low level, deterioration to frame, monkey tail stay, other ironmongery replaced with C20 knob and latch. Window to be removed, retain monkey tail stay for use elsewhere.

<b>First Floor</b>	
Bed 1 north	



C19 3 light casement, in very poor condition to cill, frame, mullions and base of casement. Replace with sympathetically detailed slimlite 3 light casement.

Stairwell east

Coloured glass fixed window to stair, to be repaired and redecorated.



Upstairs lounge east



C19 3 light casement window. In Ok condition, to be repaired and redecorated.

Exploration of internal cill and head to see if original diamond mullion mortise holes are present.

Upstairs lounge west



C19 3 light casement window. In Ok condition, to be repaired and redecorated.

Diamond mullion mortice holes present to head to be left on show.

Bed 2 south



Modern window, midC20 replace with sympathetic detailed casement with slimlite glazing



Bed 2 west



Original C16 diamond mullion window present within frame, previously infilled with a lime mortar and lime render externally. Later rendered over with cement based render and covered internally with hardboard. High historic value to the dwelling and area. The mullions have suffered wood worm damage potentially due to the cement render and linings.

Infill sections to be removed and condition of mullions assessed and conserved through sympathetic repair. Window to be exposed and new slimlite glazed casement installed externally. 3no casements to line up with mullions.



Bed 3 south



Cill and base of casements in poor condition, window to be replaced with sympathetic detailed slimlite casement.