

Roof cladding in natural grey P6R fibre cement with either Vented, Alternate Vented or closed ridge. With 20 No.9ft 6ins 8oz SAB Class 3 Rooflights with red caps as per health and safety requirements. All rainwater goods i.e. grey PVC gutters and grey PVC downpipes.

Side Cladding down 11ft 6ins below eaves level in vertical 0.5mm plastic coated box profile with Metsec side rails. Concrete Panels 95mm thick x 1500mm high.

NOTES

Foundation design allows for a safe ground bearing capacity of 150kN/sqm. *Client to confirm actual capacity.* Soil analysis to be arranged by client if required. Steelwork shotblast to BS SA 2.5 Painted 75 microns Zinc Phosphate High Build Primer - Colour 14C39 Green.

The entire footprint of the building and a further 3.5m clear working area must be provided to the building for the duration of the erecting works. The ground must be suitably prepared with stone to provide a firm, level and smooth operating surface. It is advisable to lay a geotextile membrane below the stone to prevent sinkage. This must be done to prevent un-safe plant operations.

All concrete and plant supplied and installed by customer.

Prior to commencement of erection, holding down bolts must have the cones used while installing the holding down bolts completely removed. Shufflebottom Ltd. will not remove the cones.

Holding down bolts must be grouted by others after hand-over/completion of steel erection.

Shufflebottom Ltd. will not work within 2m of any materials containing asbestos or other site hazards. If you are unsure of the materials within a 2m distance of any point of work of the new build you should undertake a survey. In the event Shufflebottom Ltd. suspect material containing asbestos is present or other site hazards are present, we will undertake our works in so far as possible up to the 2m radius and others must complete at no expense to Shufflebottom Ltd.

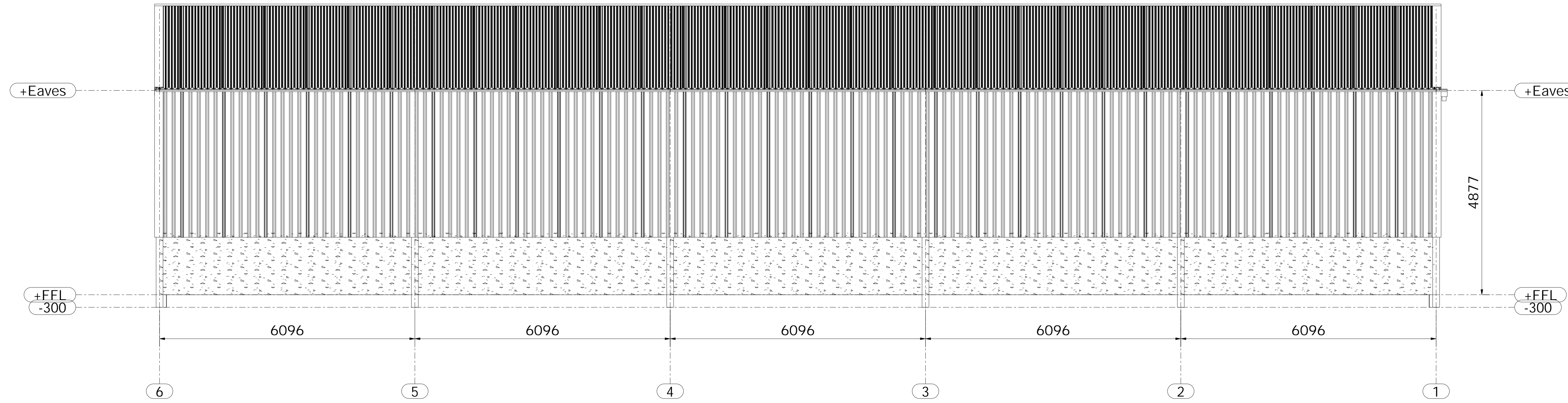
The supply of materials and the construction will be undertaken in accordance with BS5502/ BS5950/ EN1090:2 (whichever applies on the confirmation/ order). All tolerances, permitted deviations, manufacturers manuals and specifications of all products and services as stated and referred to within the applicable documentation will prevail.

All dimensions are from centre to centre of steelwork on foundation plan unless noted otherwise. Except in the case of angles and channels where dimensions are taken from the outside face of the angle and channel.

This is how we have interpreted your requirements. If this is incorrect can you please notify us verbally or in writing within 7 days of receiving your drawing.

Note:

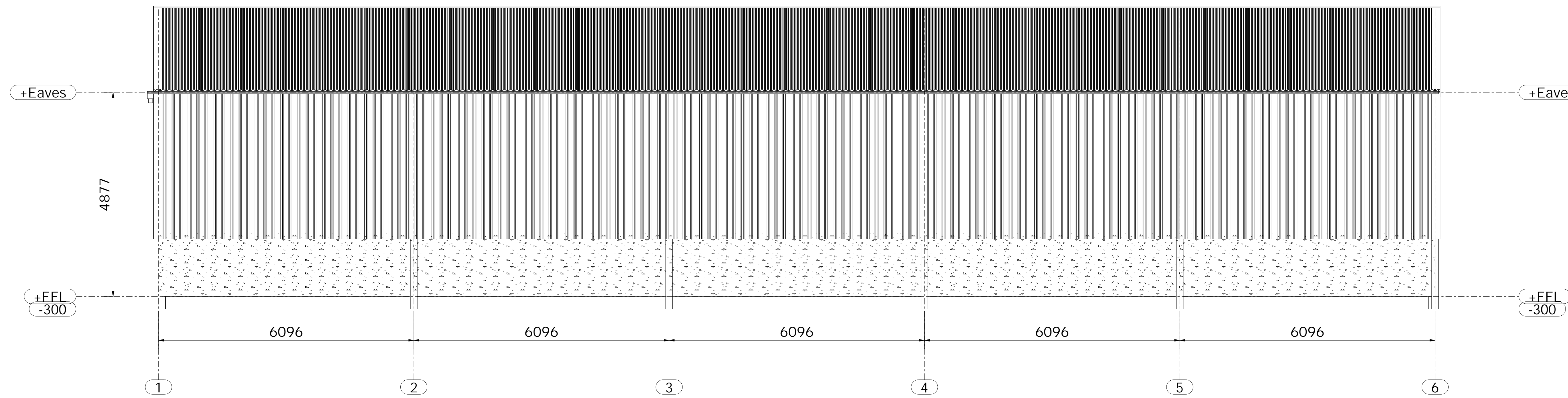
Mass concrete foundations to be grade C25/30 with a minimum O.P.C content of 275Kg/m³. A max water cement ratio 0.65 and 20mm nominal size aggregate.



Elevation on GL A 1:50

Roof cladding in natural grey P6R fibre cement with either Vented, Alternate Vented or closed ridge. With 20 No.9ft 6ins 8oz SAB Class 3 Rooflights with red caps as per health and safety requirements. All rainwater goods i.e. grey PVC gutters and grey PVC downpipes.

Side Cladding down 11ft 6ins below eaves level in vertical 0.5mm plastic coated box profile with Metsec side rails. Concrete Panels 95mm thick x 1500mm high.

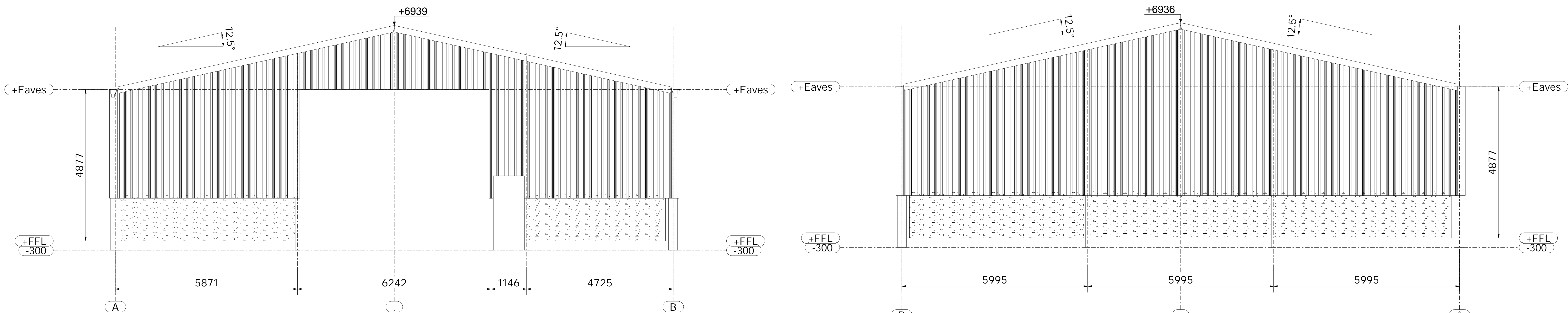


Elevation on GL B 1:50

Gable Cladding down 11ft 6ins below eaves level in vertical 0.5mm plastic coated box profile with Metsec side rails. Concrete Panels 95mm thick x 1500mm high.

GL 1 Openings: 1No. opening 20ft wide x 16ft high 1No. opening 3ft wide x 7ft high

Gable Cladding down 11ft 6ins below eaves level in vertical 0.5mm plastic coated box profile with Metsec side rails. Concrete Panels 95mm thick x 1500mm high.



Elevation on GL 1 1:50

Elevation on GL 6 1:50

REV MARK	REVISION DESCRIPTION	REVISION DATE
Shufflebottom Ltd Cross Hands Business Park Cross Hands Llanelli, Carmarthenshire SA14 6RE - Tel: 01269 831831		
		
DRAWING TITLE	Elevations	
CONTRACT	HAYNES	
MODELLED BY	CB	
CONTRACT NO	D13737	ISSUE DATE 29.03.2021
DRAWING No	G [2]	SCALE 1:50
		REVISION No.