

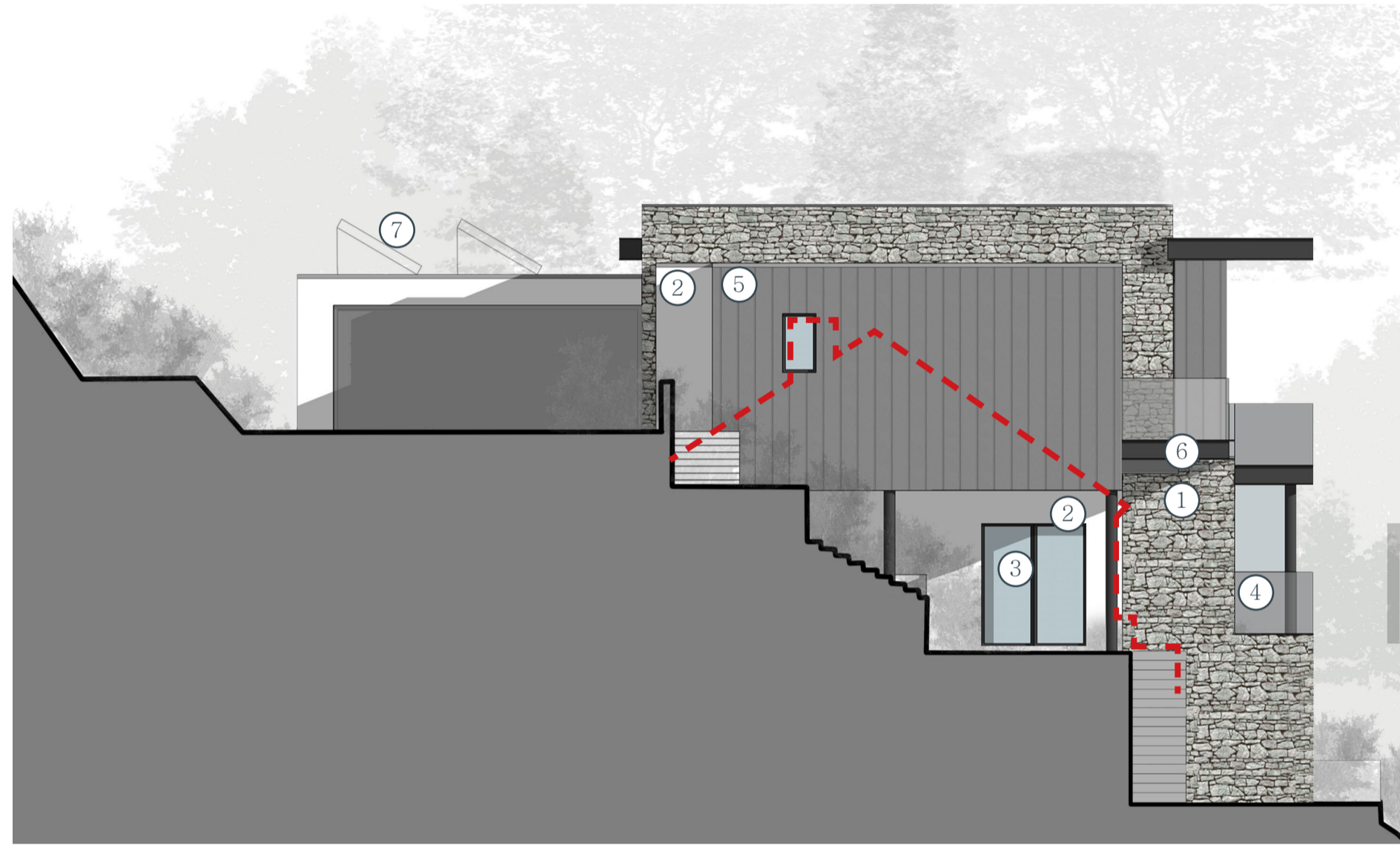
PROPOSED NORTH ELEVATION

MATERIALS KEY:

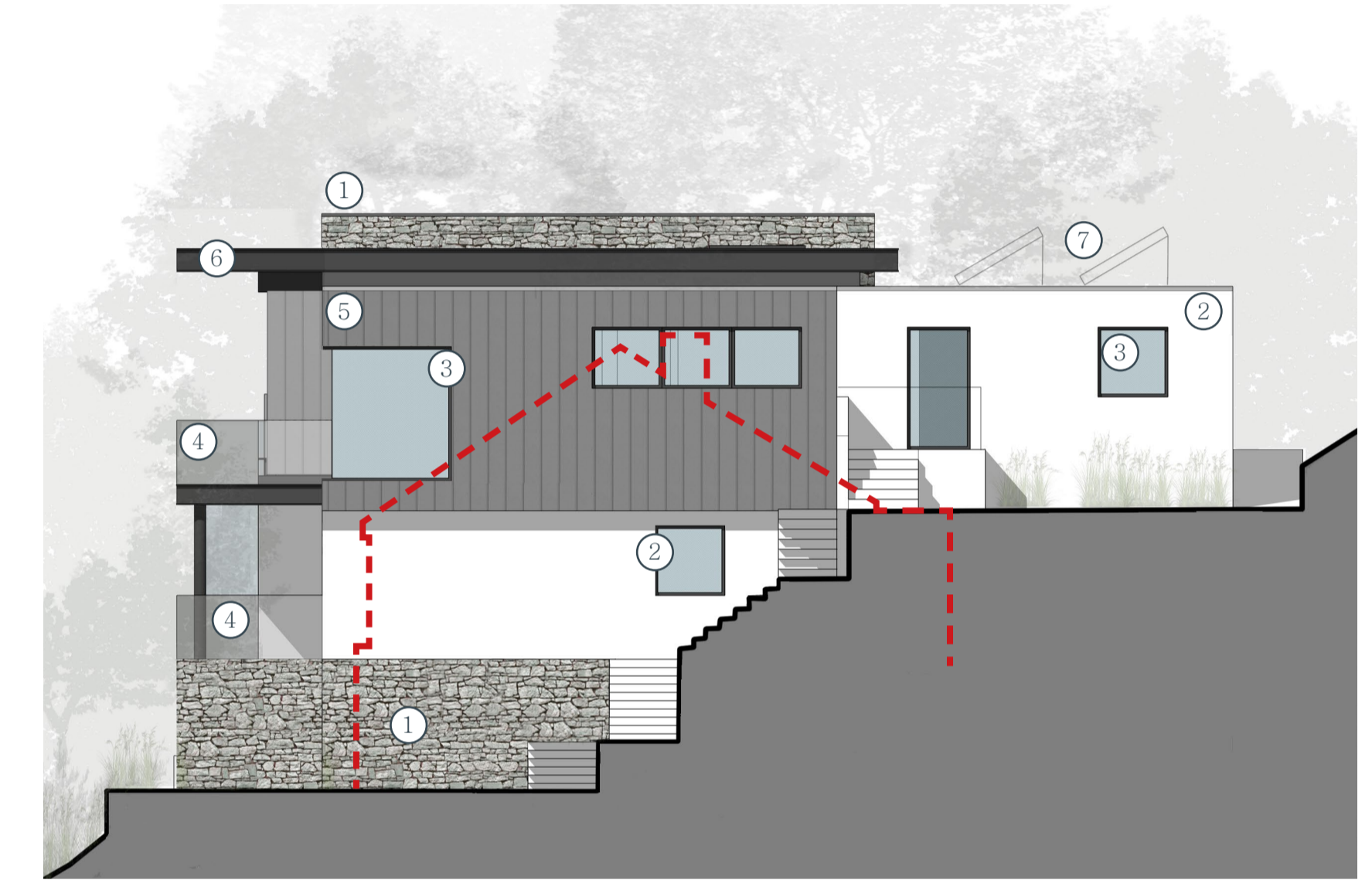
1	Natural stone
2	Render
3	Aluminium windows and doors
4	Glazed balustrade
5	Metal cladding - dark grey
6	Metal profiles - dark grey
7	PV panels



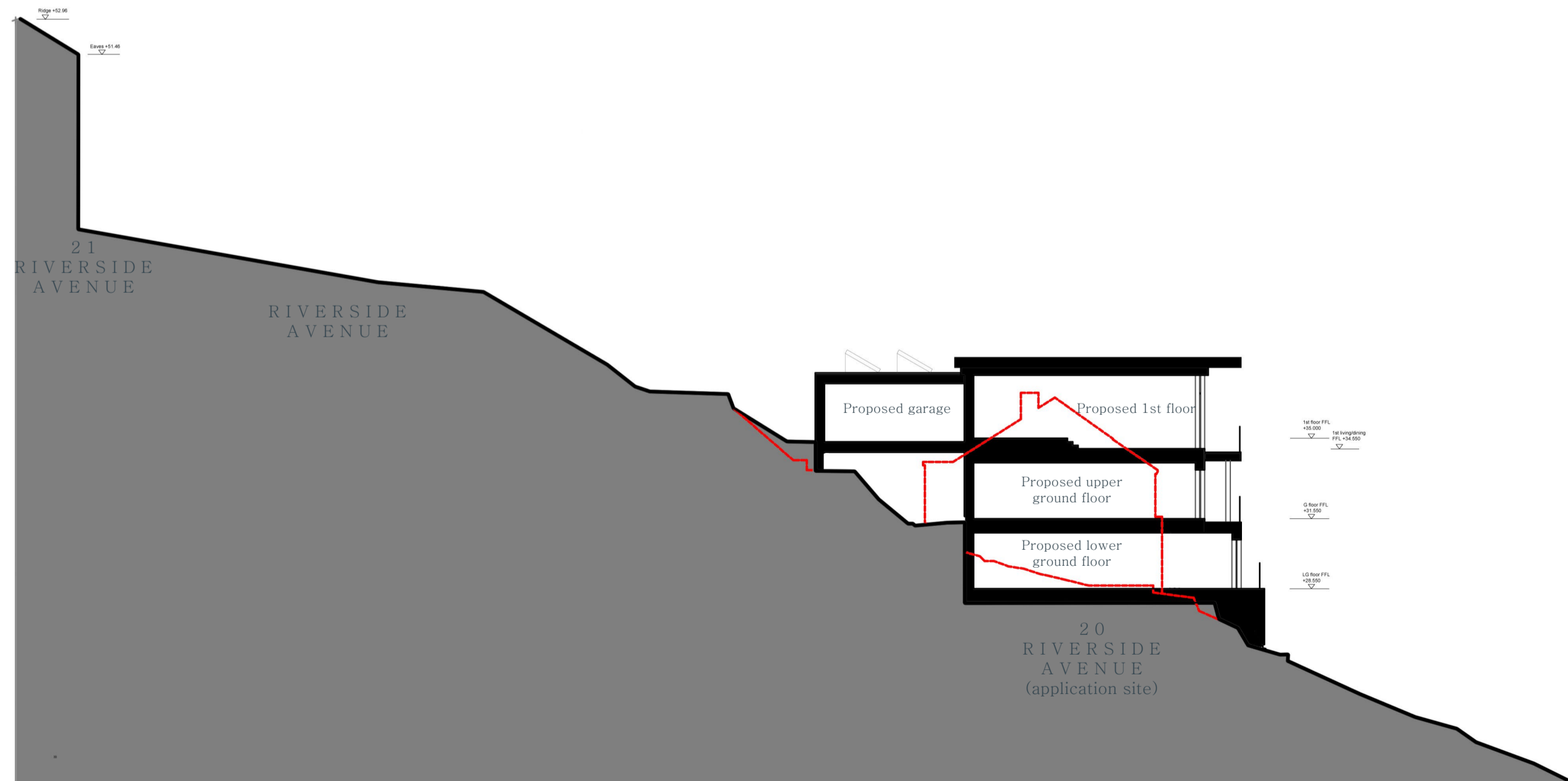
PROPOSED SOUTH ELEVATION



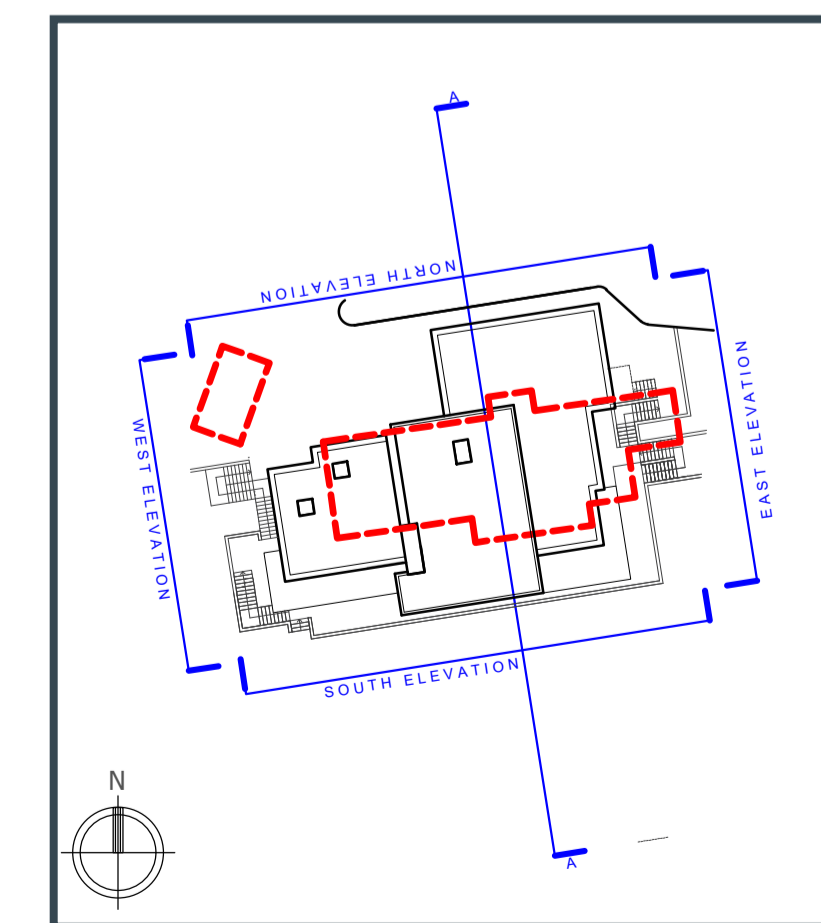
PROPOSED WEST ELEVATION



PROPOSED EAST ELEVATION



PROPOSED SECTION AA



KEY PLAN

Rev A Issued March 2021 For Non-Material Amendment

studioarc

67 Lemon Street
TRURO
TR1 2PN
t: 01872 274200
www.studio-arc.co.uk

project title
ARC_089_Riverside Avenue

drawing title
Proposed Elevations

scale
1:100 @ A1

date
Jan 2020

drawn by
LB

status planning	drawing number GA03	revision A
---------------------------	-------------------------------	----------------------