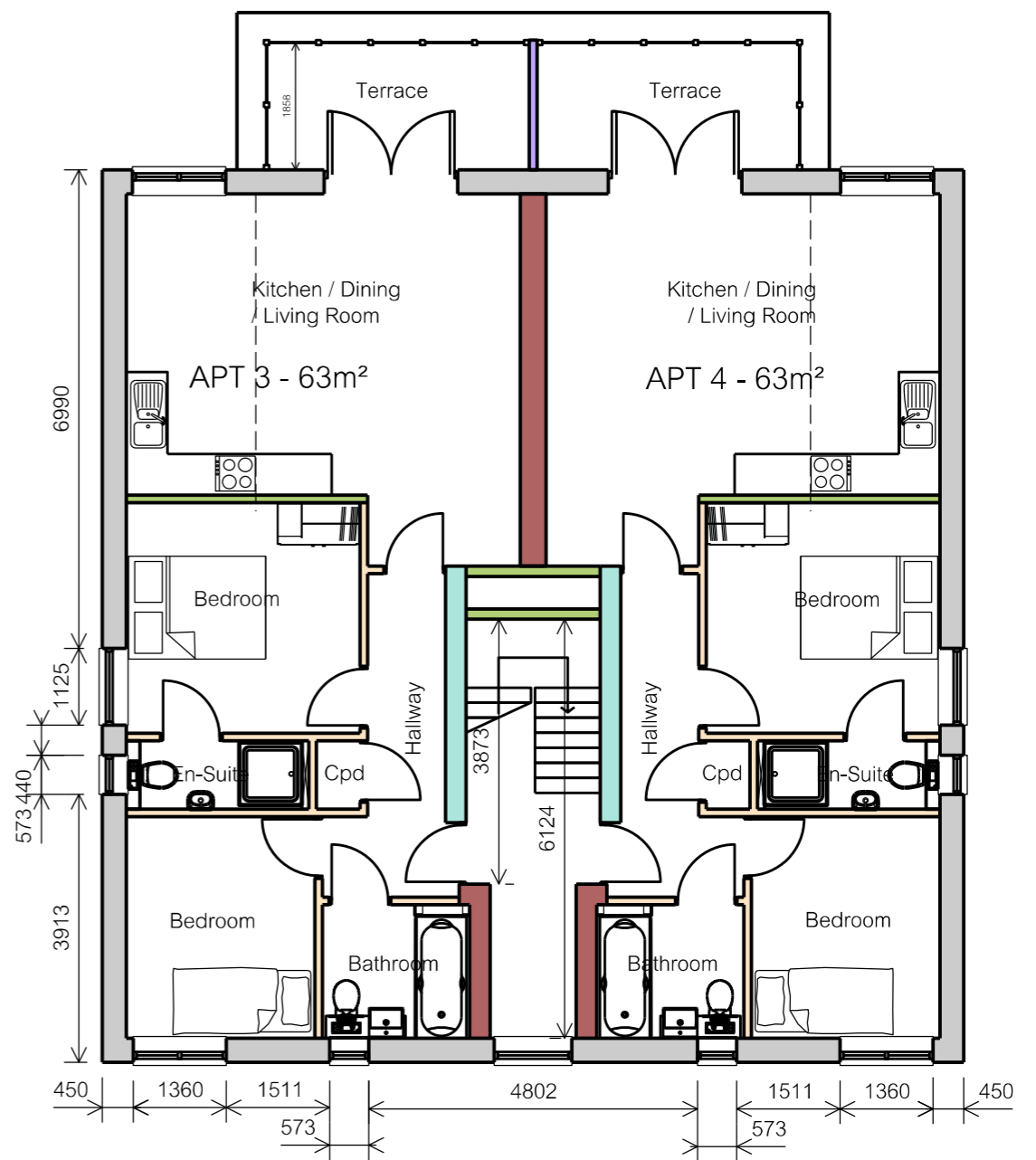
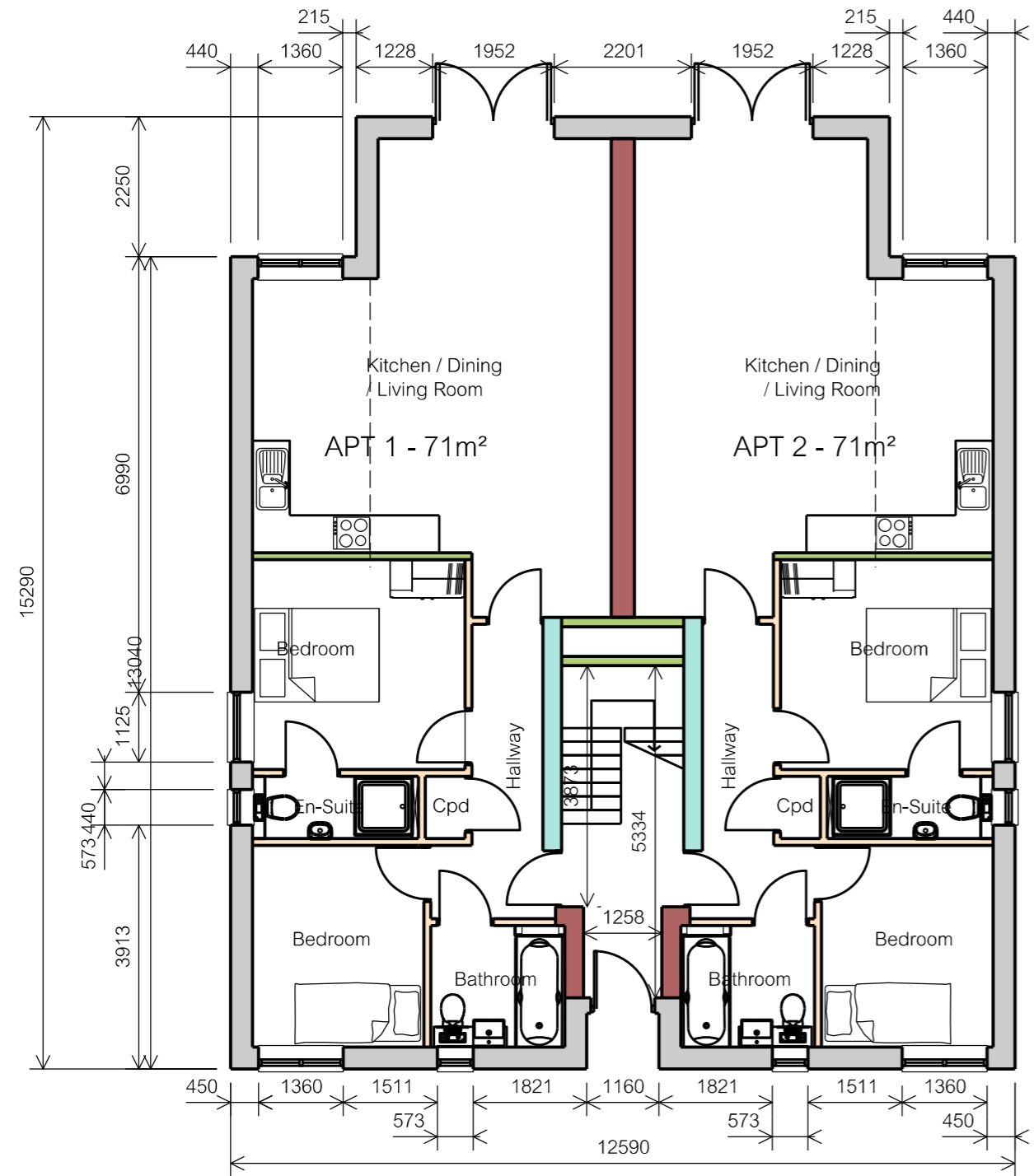


GROUND FLOOR

FIRST FLOOR



- Cavity wall - u-value: 0.14W/m²K (render) 0.15W/m²K (brick)
100mm Celcon lightweight blockwork with 25mm Weber Pral.M through colour render, 100mm Kingspan K108 cavity insulation board, 50mm residual cavity, 100mm Celcon lightweight concrete block, 12.5mm plasterboard with dot & dab fixing, skimmed & painted
OR
100mm fair faced brickwork, 100mm Kingspan K108 cavity insulation board, 50mm residual cavity, 100mm Celcon lightweight concrete block, 12.5mm plasterboard with dot & dab fixing, skimmed & painted
- Party Wall Type A - Robust Detail E-WM-17 - 325mm thk
100mm lightweight block each leaf, 75mm cavity full fill with Isover RD Party Wall insulation, dot & dab plasterboard, skimmed & painted
- Party Wall Type B - Robust Detail E-EM-2 - 301mm thk
100mm lightweight block each leaf, 75mm cavity full fill with Isover RD Party Wall insulation, 10mm Thistle Hardwall & 3mm Thistle Multifinish skim coat, painted
- Internal Stud Wall - 110mm thk
75x38mm sw studs @ 600mm ctrs, 75mm Isover APR1200 acoustic insulation to cavity, 15mm Soundbloc board each side, skimmed & painted
- Party Wall / Smoke Vent Shaft Wall / Load Bearing Bedroom Wall - 113mm thk each leaf / 130mm to bedroom
Dense concrete block, fair faced within the smoke vent, plaster finish to the visible faces with 10mm Thistle Hardwall and 3mm Thistle Multifinish skim coat, painted. Plasterboard lining to bedroom

footprint reduced load bearing wall to bedroom revision	MN MN by	21.02.21 14.08.20 date	B A index
---	----------------	------------------------------	-----------------

New Apartments
4 Bladon Close
Oxford OX2 8AD
Ground & First Floor GA Plan