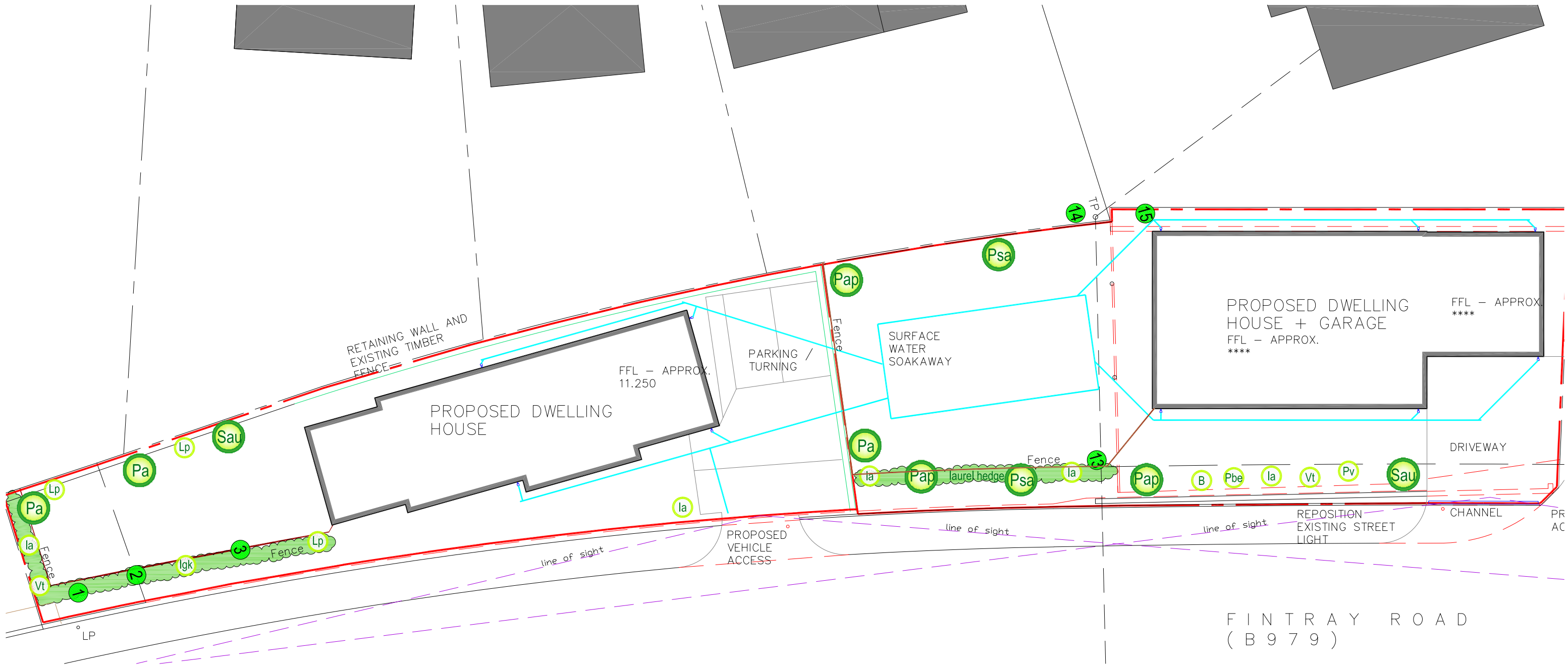
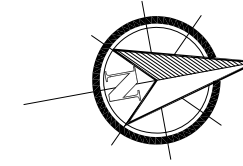


Landscape Planting

Site at Fintray Road, Blackburn



Planting Methodology

Tree pits will be dug 1.0m square x 0.8m in depth. A friable loam topsoil will be added to the planting pits, to which will be added a slow release fertiliser.

The rootballed trees will be anchored to the ground using a triangular arrangement of stakes with cross-bracing over the top of the rootball. This system fixes the rootball to the ground, and as the topsoil is returned to the planting pit and firmed in, forms a rigid structure to hold the rootball and prevent movement.

Planting Procedure

1. Dig planting pit.
2. Install root ball anchoring triangle.
3. Infill topsoil (loam) mix and firm in regularly as backfilling continues.
4. Water rootball.

Tree and Shrub Maintenance

Years 1 - 5: April - September
Water when necessary in times of drought.
Hand weed trees and shrubs to ensure removal of competitive weed species.
Firm in trees and shrubs twice yearly, at the start of the growing season and again at the end.

Year 6: Remove stakes and tree ties.

Retained trees

Code	Quantity	Species	Size
Pa	3	Prunus avium	2.1 - 2.5m
Pap	3	Prunus avium plena	2.1 - 2.5m
Psa	2	Prunus sargentii	2.1 - 2.5m
Sau	2	Sorbus aucuparia	2.1 - 2.5m

Laurel Hedging

29 Prunus rotundifolia plants 60 - 90cm
To be planted at 1.0m intervals, interspersed with large shrubs or trees as shown.

Shrub Planting

Ia	5	Ilex aquifolium	5.0 litre
B	1	Buddleia	5.0 litre
Igk	1	Ilex gold king	5.0 litre
Lp	3	Lonicera periclymenum	3.0 litre
Pbe	1	Philadelphus belle etoile	5.0 litre
Pv	1	Philadelphus virginale	5.0 litre
Vt	2	Viburnum tinus	5.0 litre



project:	
Proposed New Houses at Fintray Road, Blackburn	
Client:	Inspire Property
Date:	25th February 2015
Drawing:	FRB-1502-LS
CAD File:	
Scale:	1:200 at A3
Orgh:	