

Appendix 3: Photographs



Fig. 7: General view from the south-west (CPAT 4900-0001)

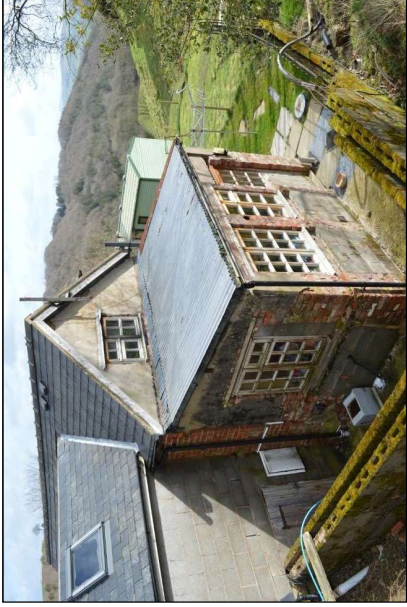


Fig. 8: The southern extension (CPAT 4900-0002)



Fig. 9: Modern extensions to ground and first floor (CPAT 4900-0003)

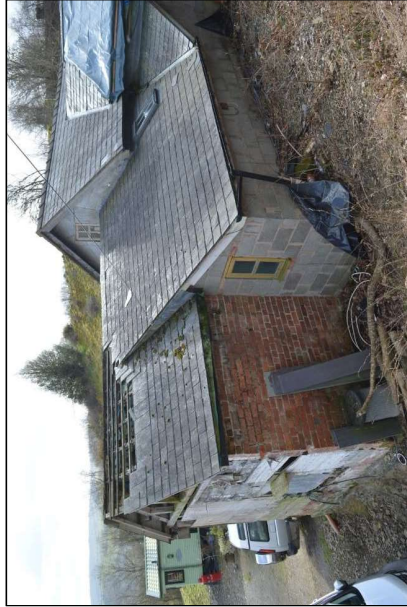


Fig. 10: The north end of the house (CPAT 4900-0004)



Fig. 11: The west end of the first floor extension (CPAT 4900-0005)



Fig. 12: The southern extension (CPAT 4900-0006)



Fig. 13: General view from the east (CPAT 4900-0007)



Fig. 14: The core of the 19th century house (CPAT 4900-0008)

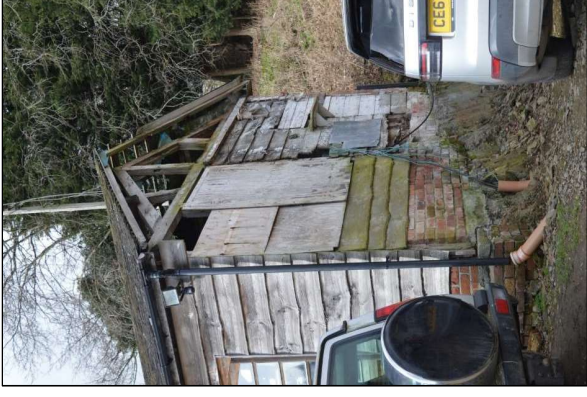


Fig. 15: The north end of the former byre (CPAT 4900-0009)



Fig. 16: The east side of the former byre (CPAT 4900-0010)



Fig. 17: The west side and north end of the former byre (CPAT 4900-0011)



Fig. 18: The join between the southern extension and the 19th century house (CPAT 4900-0012)



Fig. 19: Modern foundations of the bay window (CPAT 4900-0013)



Fig. 20: South-eastern part of the 19th century house (CPAT 4900-0014)



Fig. 21: The modern porch on the east side of the house (CPAT 4900-0015)



Fig. 23: Timber frame at the north-east corner of the house (CPAT 4900-0017)



Fig. 22: The southern end of the surviving timber frame (CPAT 4900-0016)



Fig. 24: The east side of the house (CPAT 4900-0018)



Fig. 25: Timber frame, note the upper panels are later (CPAT 4900-0019)



Fig. 26: Stone and brick plinth at the north-east corner of the house (CPAT 4900-0020)

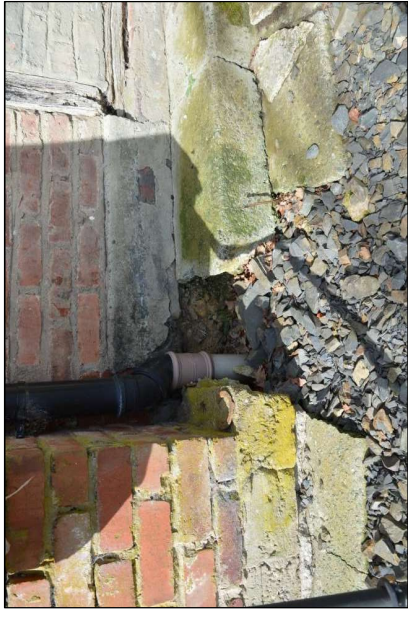


Fig. 27: Foundations at the south end of the surviving timber frame (CPAT 4900-0021)

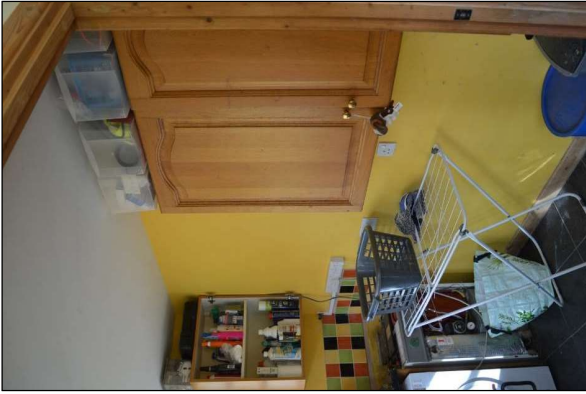


Fig. 28: The south end of the house in the modern extension (CPAT 4900-0022)



Fig. 29: False fireplace in the centre of the house (CPAT 4900-0023)

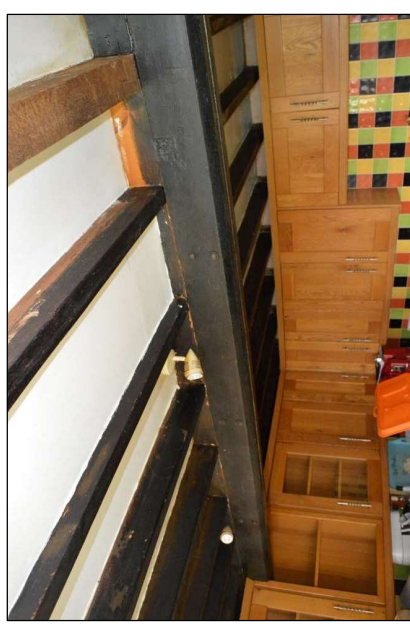


Fig. 30: Bolted together beam in the kitchen (CPAT 4900-0024)



Fig. 31: The bolts in the main kitchen beam (CPAT 4900-0025)



Fig. 32: Some of the structure hidden by the false fireplace (CPAT 4900-0026)

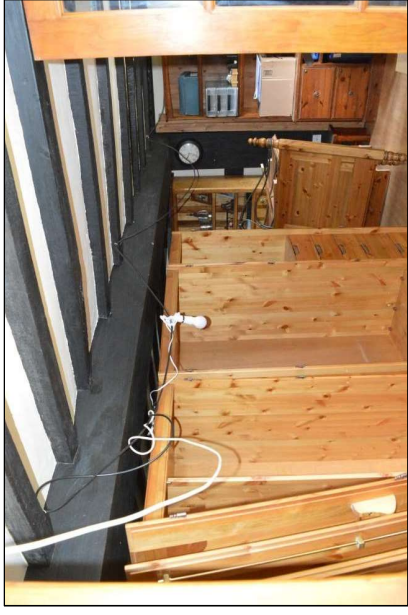


Fig. 33: False beam masking the steel girder in the living room (CPAT 4900-0027)

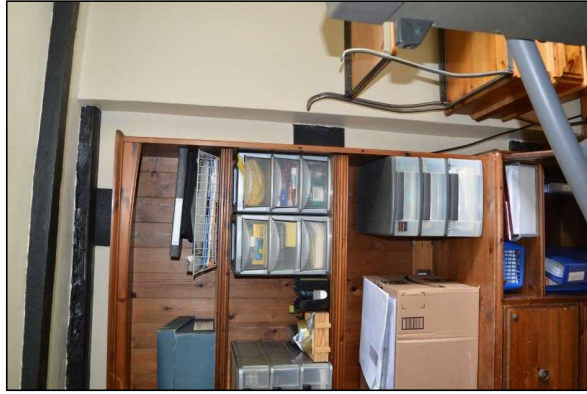


Fig. 34: Internal view of the north end of the house (CPAT 4900-0028)



Fig. 35: Internal view of the north end of the house (CPAT 4900-0029)



Fig. 36: The stairs to the first floor, on the west side of the 19th-century house (CPAT 4900-0030)



Fig. 37: Modern toilet to north of the stairs (CPAT 4900-0031)



Fig. 38: The timber frame at the north end of the house (CPAT 4900-0032)



Fig. 39: West end of the frame showing the original roof pitch (CPAT 4900-0033)



Fig. 41: West end of the frame showing the plinth (CPAT 4900-0035)

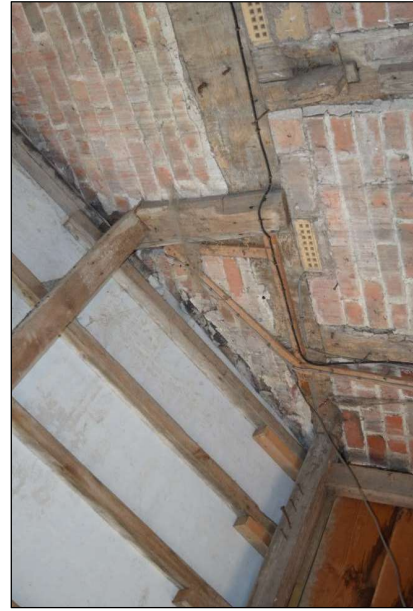


Fig. 40: East end of the frame showing the roof of the former byre (CPAT 4900-0034)

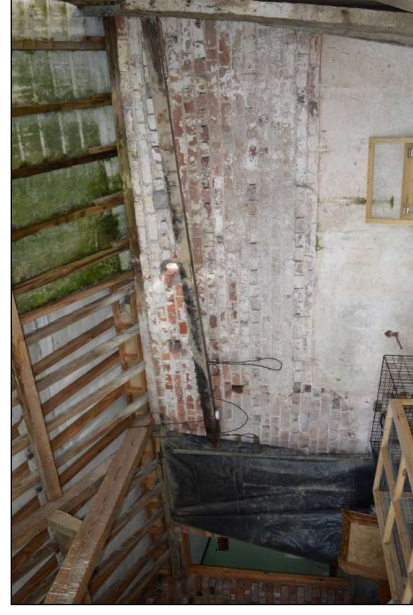


Fig. 42: West wall of the former byre (CPAT 4900-0036)



Fig. 43: Central truss of the former byre (CPAT 4900-0037)



Fig. 44: Northern truss of the former byre (CPAT 4900-0038)



Fig. 45: The north wall of the former byre (CPAT 4900-0039)

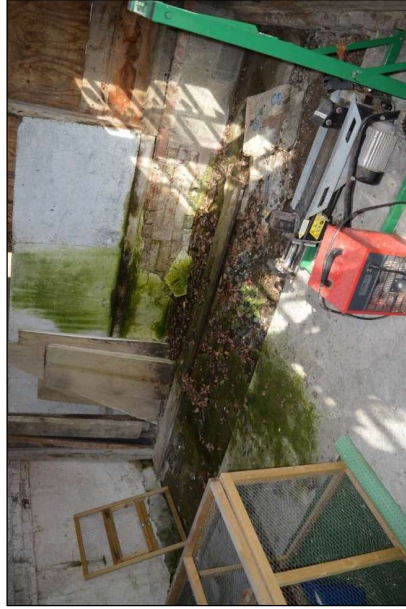


Fig. 46: Sleeper wall and possible drainage channel at north end of former byre (CPAT 4900-0040)



Fig. 47: East wall of former byre with modern doors (CPAT 4900-0041)

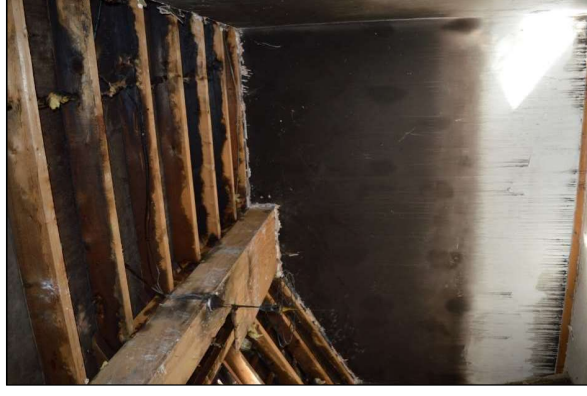


Fig. 48: Fire damaged bedroom 4 (CPAT 4900-0042)



Fig. 49: Fire damaged bedroom 3 (CPAT 4900-0043)



Fig. 50: Fire damaged landing and bathroom (CPAT 4900-0044)



Fig. 51: Steel beam above the bathroom (CPAT 4900-0045)



Fig. 52: Landing and entrance to bedrooms 1 and 2 (CPAT 4900-0046)



Fig. 53: West side of bedroom 1 (CPAT 4900-0047)



Fig. 54: Steel beam attached to apex of timber frame in bedroom 1 (CPAT 4900-0048)



Fig. 57: En-suite bathroom for bedroom 1 (CPAT 4900-0051)



Fig. 56: Modern dormer window in bedroom 1 (CPAT 4900-0050)

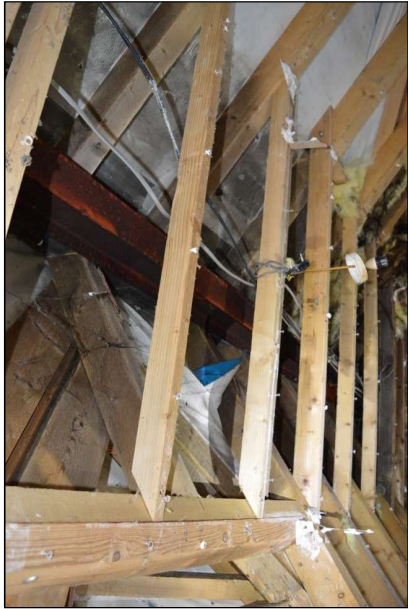


Fig. 55: Steel beam forming ridge line in bedroom 1 (CPAT 4900-0049)

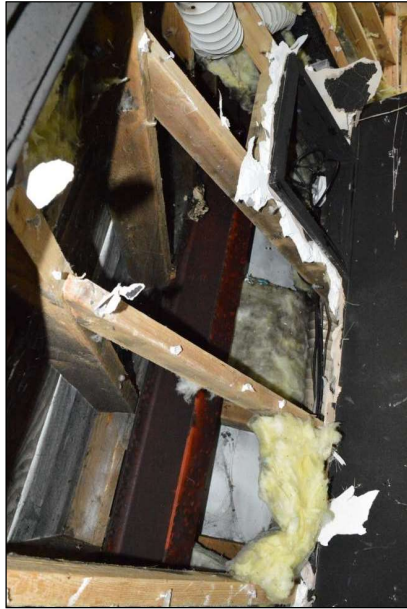


Fig. 58: Steel beam supporting the ridge in bedroom 2 (CPAT 4900-0052)

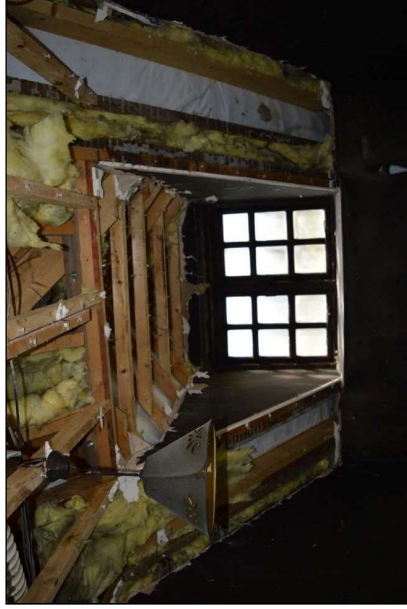


Fig. 59: Modern dormer window in bedroom 2 (CPAT 4900-0053)



Fig. 60: West side of bedroom 2 (CPAT 4900-0054)

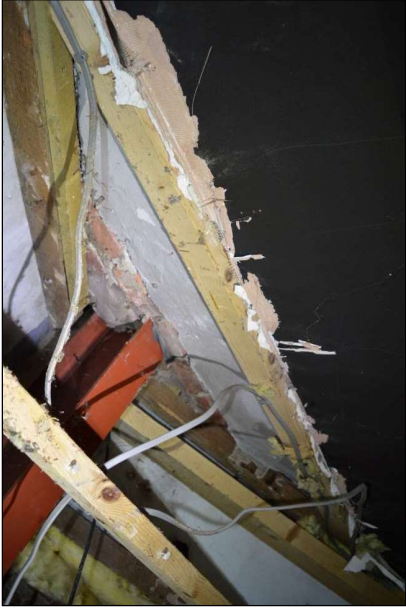


Fig. 61: Steel beam set into the south wall of the 19th century house (CPAT 4900-0055)

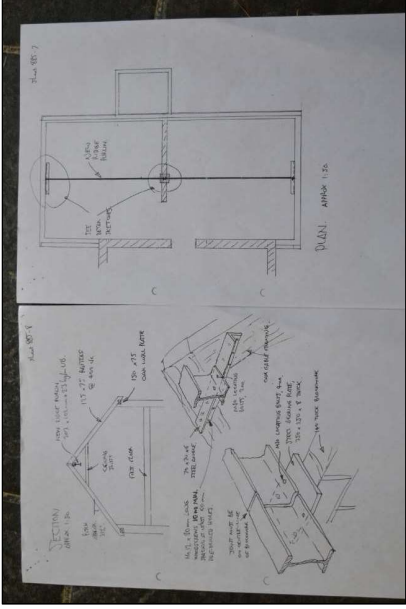


Fig. 62: Drawing from 2004 showing plan of steel beam layout (CPAT 4900-0056)

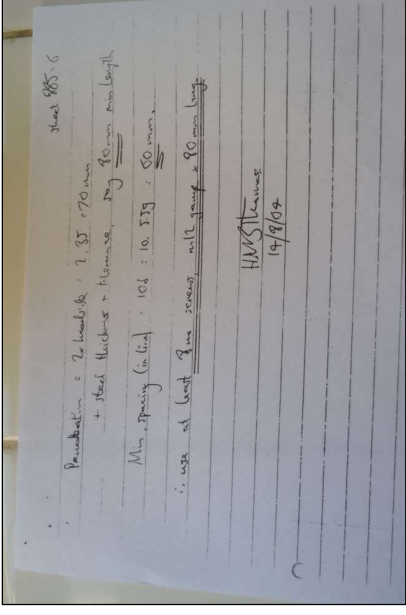


Fig. 63: Date following Fig. 62 (CPAT 4900-0057)