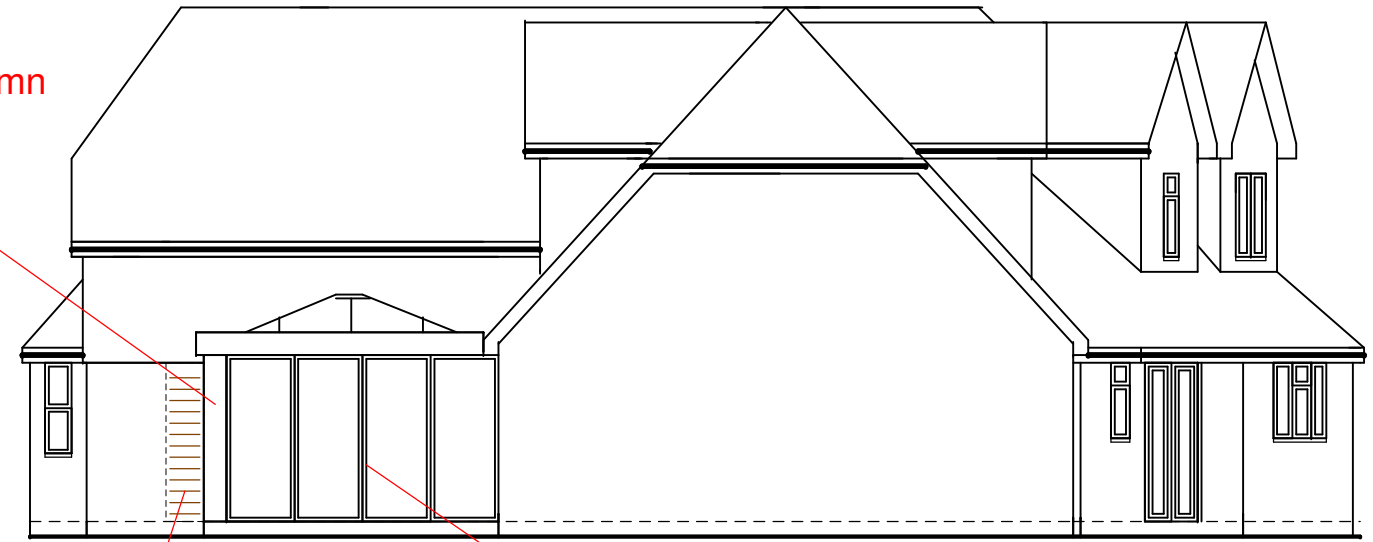


front (west) elevation

corner column  
grey

3.20  
2.70

grey upvc frames



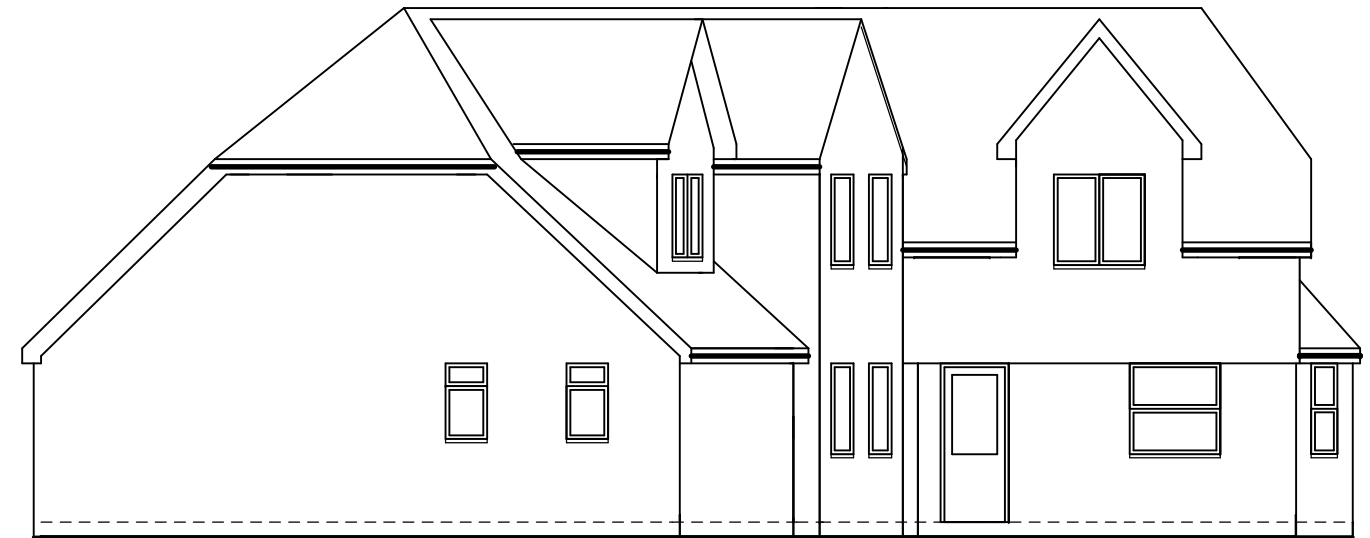
right (south) elevation

new  
brickwork

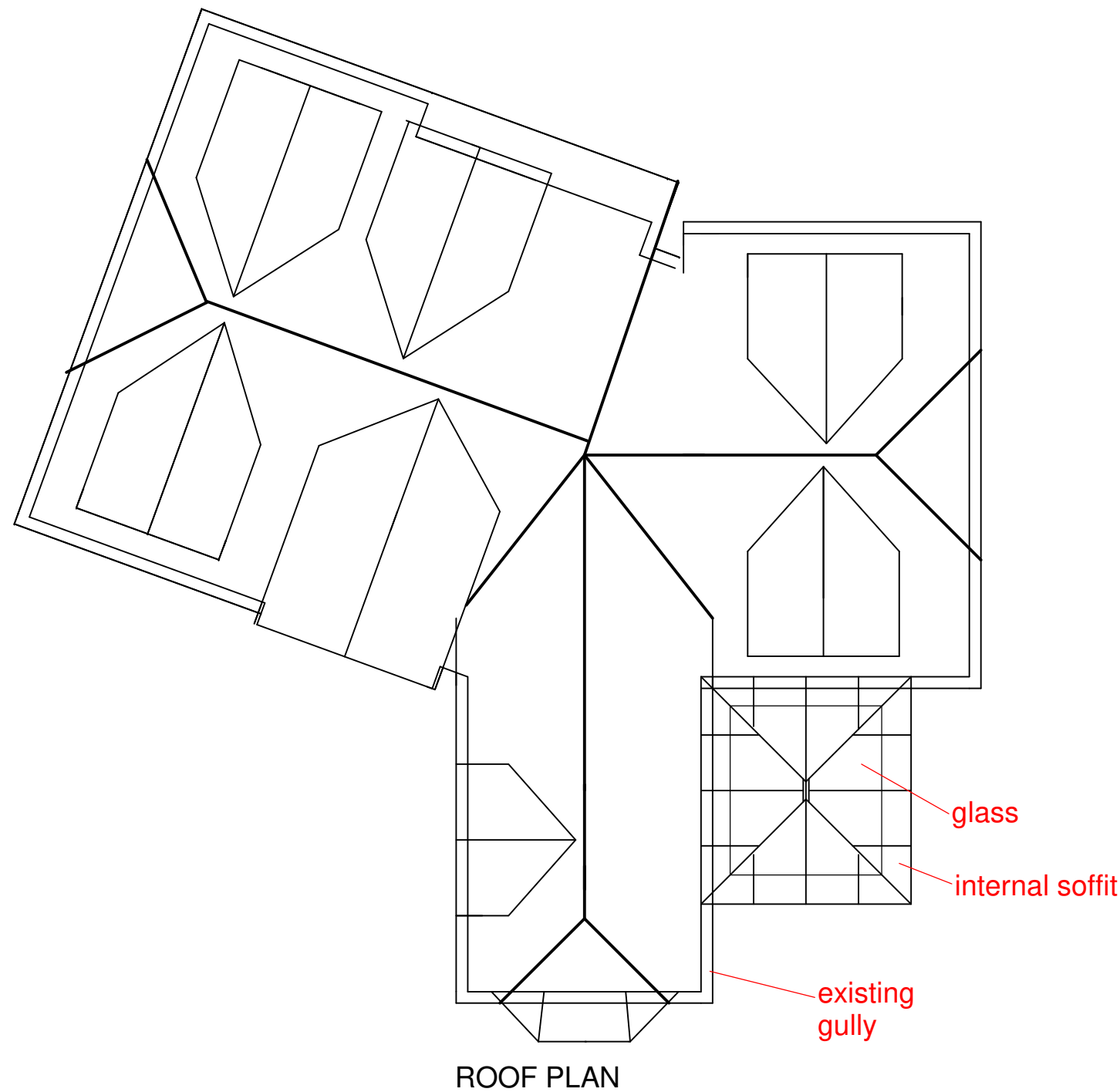
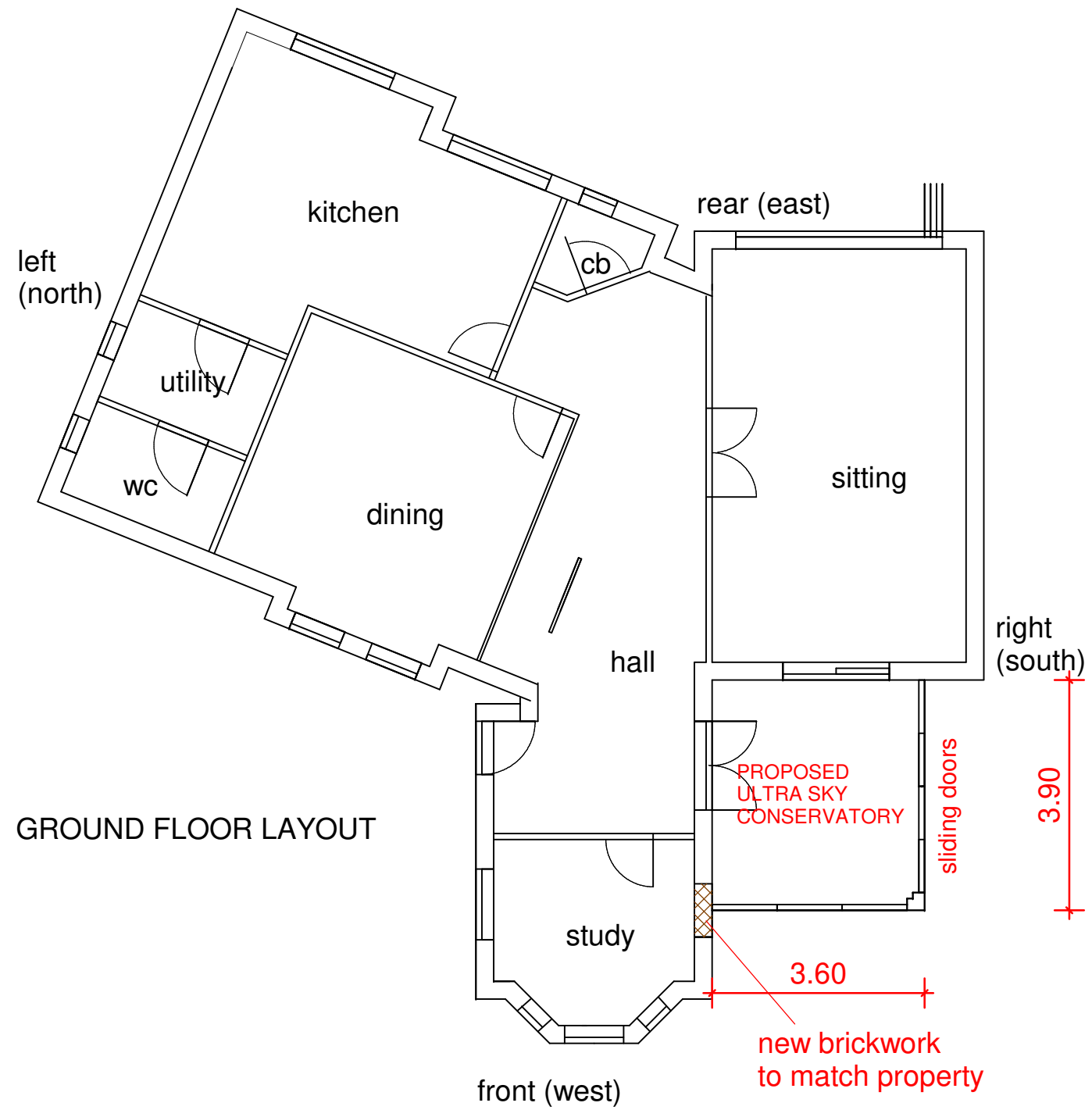
upvc sliding doors



rear (east) elevations



left (north) elevation



**PROPOSED ULTRA SKY CONSERVATORY**  
 width 3.6m, projection 3.9m, hgt to eaves 2.7m, hgt to ridge 3.2m  
 brickwork to DPC to match property, unit fully glazed, frames/rafters  
 grey upvc, sliding doors, glazing clear, roof material glass,  
 internal roof soffit

drainage to existing gully, boundary fence hgt to remain same

