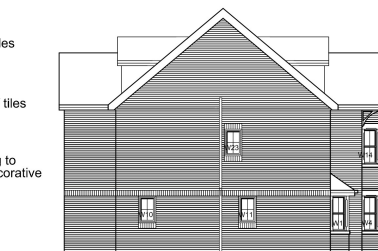


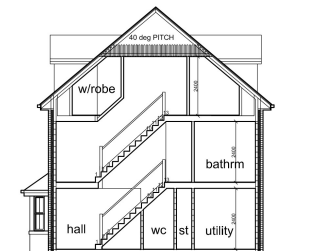
# the WINDSOR A Plot 1 & 4



**FRONT ELEVATION**



**SIDE ELEVATION**

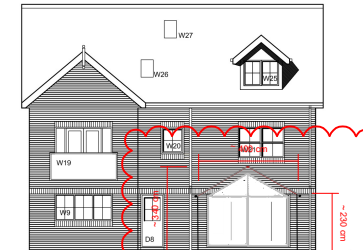


**SECTION A**



The materials to be used on the external elevations of the extension will be similar in appearance to those on the existing dwelling as defined on this drawing.

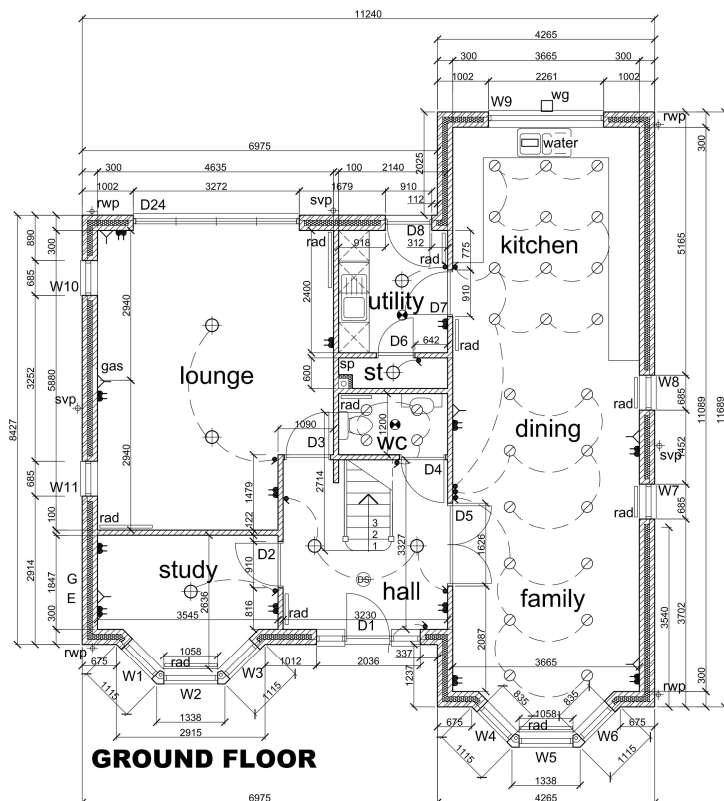
**SIDE ELEVATION**



**REAR ELEVATION**

ref	opening width	opening height	lintel	length	door width	notes
D1	2036	2100			838	pt M access
D2	910	2100			838	
D3	910	2100			838	
D4	910	2100			838	
D5	1626	2100			2x762	double
D6	762	2100			686	cloaks cupd
D7	910	2100			838	
D8	910	2100			838	external
D9	838	2100			762	
D10	838	2100			762	
D11	838	2100			686	linen cupd
D12	838	2100			762	
D13	838	2100			762	
D14	838	2100			762	
D15	838	2100			762	
D16	762	2100			686	linen cupd
D17	838	2100			762	
D18	838	2100			762	
D19	838	2100			762	
D20	838	2100			762	
D21	838	2100			762	
D22	838	2100			762	
D23	838	2100			762	
D24	3272	2100				bi-fold doors

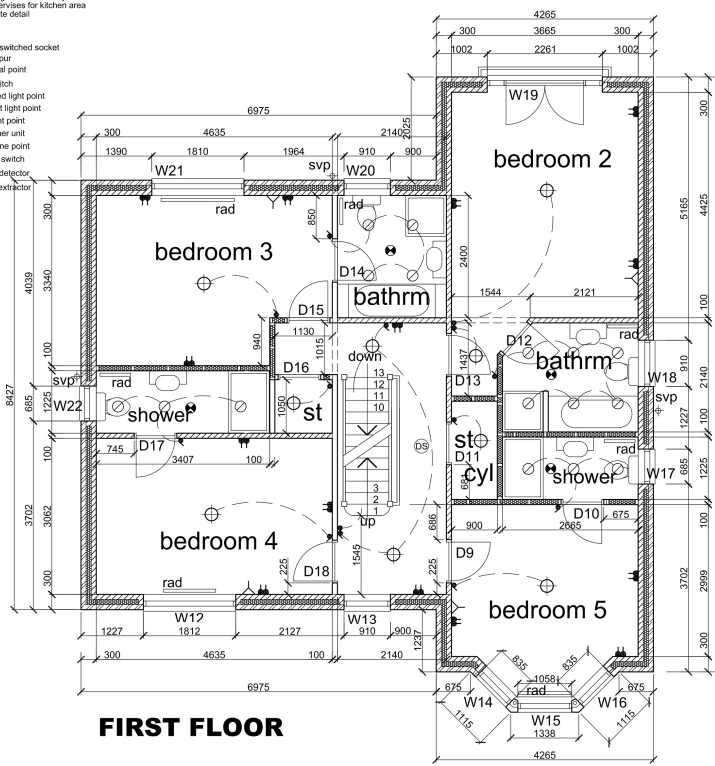
ref	opening width	opening height	lintel	length	notes
W1	835	1350			bay window
W2	1058	1350			bay window
W3	835	1350			bay window
W4	835	1350			bay window
W5	1058	1350			bay window
W6	835	1350			bay window
W7	685	1200			
W8	685	1200			
W9	2260	1050			
W10	685	1050			obscure glazed
W11	685	1050			obscure glazed
W12	1612	1200			
W13	910	1200			
W14	835	1350			bay window
W15	1058	1350			bay window
W16	835	1350			bay window
W17	685	1050			obscure glazed
W18	910	1050			obscure glazed
W19	2260	2100			juliet balcony
W20	910	1050			obscure glazed
W21	1810	1200			
W22	910	1050			obscure glazed
W23	1580	1050			dormer
W24	910	1050			obscure glazed
W25	1580	1050			dormer
W26	780	980			noctlight
W27	780	980			noctlight
W28	910	1050			



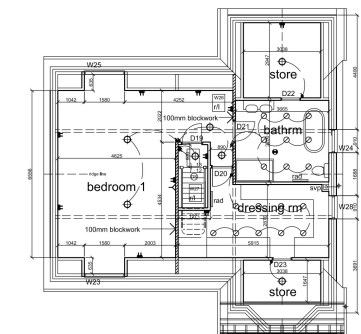
**GROUND FLOOR**

KEY

- double switched socket
- fixed spur
- TV aerial point
- light switch
- recessed light point
- pendant light point
- wall light point
- consumer unit
- telephone point
- isolator switch
- smoke detector
- ceiling extractor



**FIRST FLOOR**



**SECOND FLOOR**

**FYLDE DESIGN**  
associates

the **WINDSOR A**  
Garstang Golf Club, Bowgreave  
**BAXTER CONSTRUCTION**