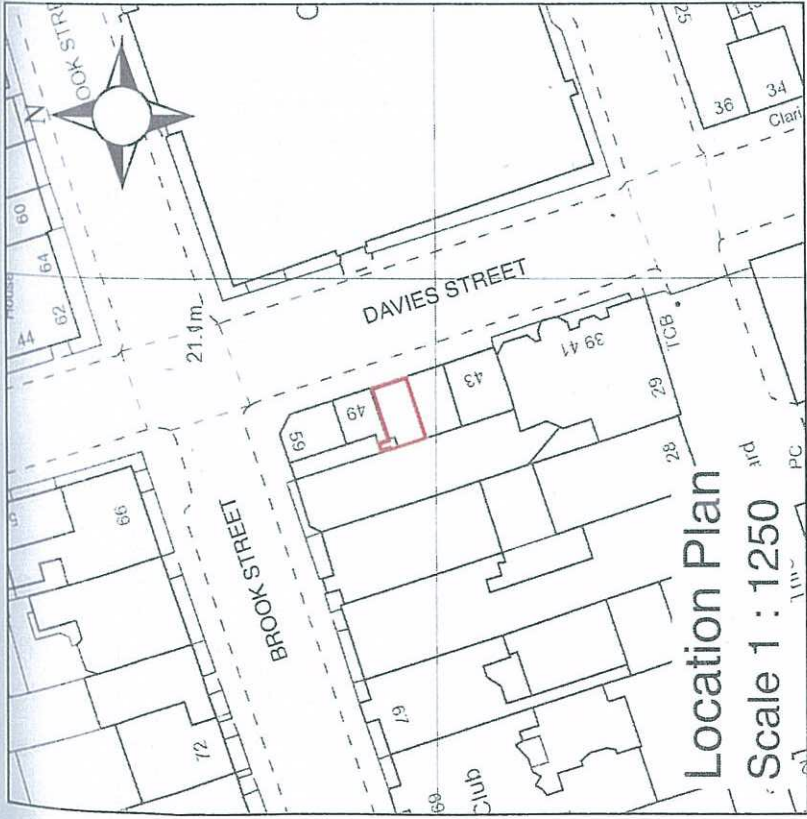


Commercial Premises
47 Davies Street
London
W1K 4LY

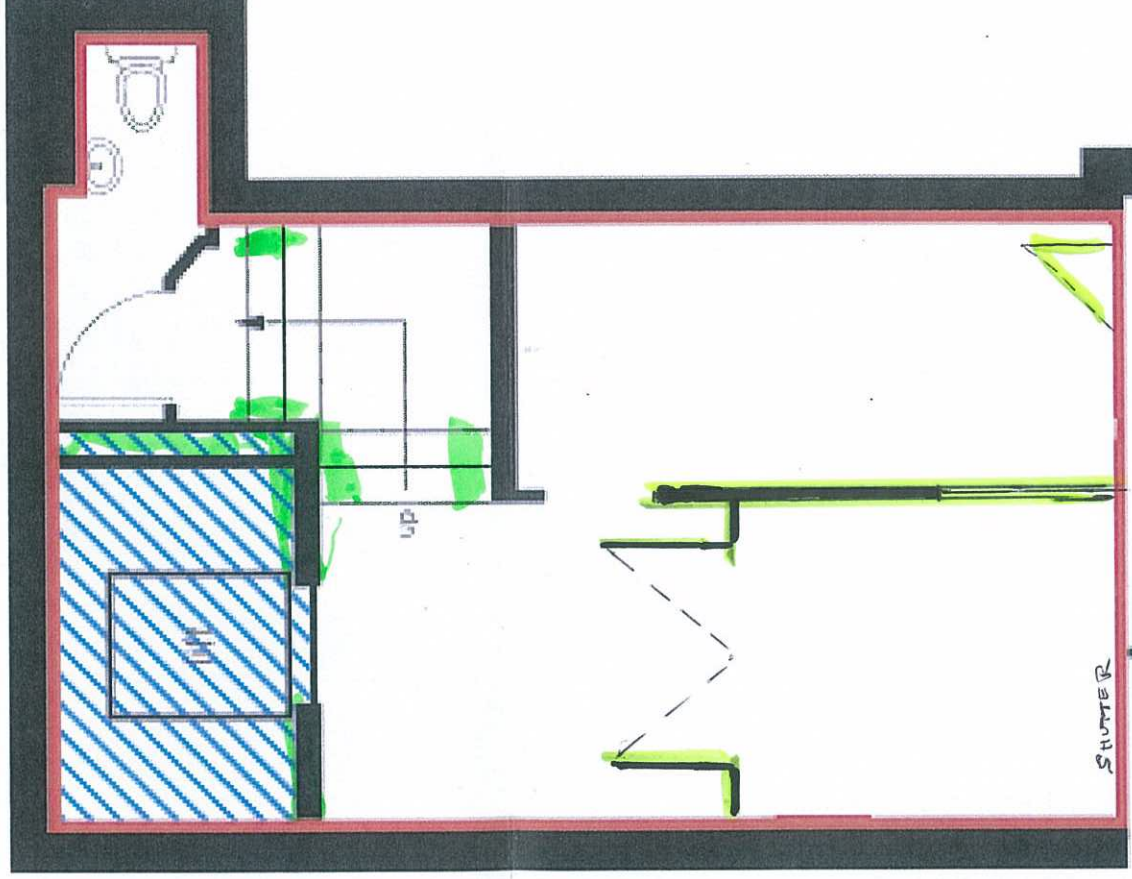
Scale 1:100

Ground Floor



PROPOSED WORKS

1. REMOVE STEEL SHUTTER AND ADAPT EXISTING TIMBER S/F TO MATCH OR COMPLEMENT THAT TO NO. 45 (SEE PHOTO)
2. REMOVE PARTITIONS ETC HIGHLIGHTED IN YELLOW, MAKE GOOD AND LEVEL FLOORS - NEW COVERING. REINSTALL PASTERBOARD SUSPENDED CEILING AS NEC.
3. CONVERT LIFT SHAFT AREA (BLUE MARKED) TO STORE OR
4. REMOVE R/C LIFT SHAFT WALLS ADS. STEPS AND RE-POSITION W.C. AT LOWER LEVEL.



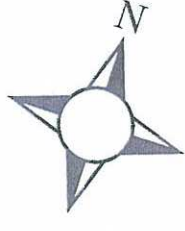
PAVEMENT

DAVIES STREET



SCALE BAR AT 1:100

X Maxwell
Max's Khoo
J Cameron



NOTES	Magnolia Square Limited 57 Rathbone Place London W1T 1JU	020 7479 4855	EXTENT OF DENSE
	PRINT AT A4		
PROJECT	47 Davies Street London W1K 4LY		
MEASURED SURVEY			
DRAWING TITLE	LEASEPLAN		
SCALE	1:100	DATE	Nov 2017
DRAWING NUMBER	1		12747

PARTITIONS NOT SHOWN ON LEASE PLAN TO BE REMOVED FULL HEIGHT (NON LOAD BEARING)
PARTITIONS & STRUCTURE TO BE REMOVED?



Steve Willimont <stevewillimont@gmail.com>

WILDTHINGS - Davies Street Proposed Alterations

Louise - Wild Things Flowers <louise@wildthingsflowers.co.uk>
To: Steve Willimont <sw@willimont.com>

19 February

Dear Steve,

Thank you for emailing. It was a pleasure to meet you we are happy with your proposal. Regarding the front elevation of the store front, we would require one door and a glazed front sin shop next door.
Please let us know when it is convenient for you to visit, and we will be there to let you in,



Kind regards,

Louise

Wild Things Flowers - Mayfair

Mob. 07525653155
Tel. 0207 4953030
47 Davies Street, Mayfair, London, W1K 4LY
<https://wildthingsflowers.co.uk>

[Quoted text hidden]

<INITIAL SKETCH PROPOSAL.pdf>