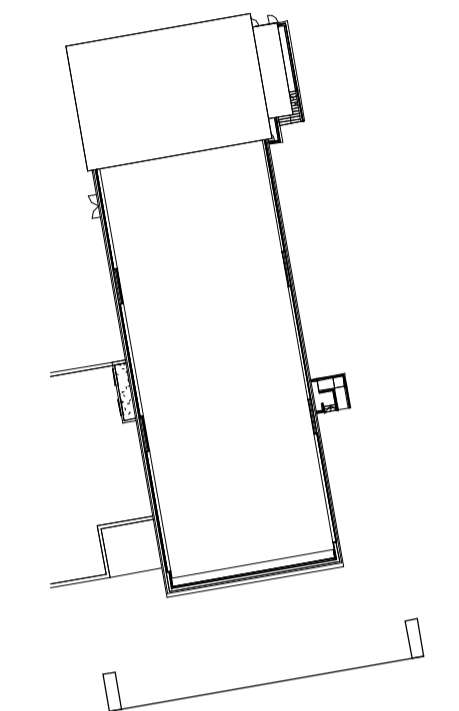


DO NOT SCALE ANY DIMENSIONS OFF THIS DRAWING. ANY DISCREPANCIES BETWEEN THIS DRAWING AND OTHER INFORMATION ARE TO BE REFERRED TO MCM ARCHITECTURE LIMITED. WHERE THE DRAWING RELATES TO AN EXISTING BUILDING OR COMPLETED CONSTRUCTION THE CONTRACTOR IS RESPONSIBLE FOR CHECKING THAT THERE IS NO CONFLICT BETWEEN ACTUAL BUILDING DIMENSIONS AND DRAWING DIMENSIONS. IN THE EVENT OF DISCREPANCIES BETWEEN THIS DRAWING AND SUBCONTRACTORS APPROVED WORKING DRAWINGS FOR RELEVANT BUILDING COMPONENTS, THE SUBCONTRACTORS DRAWING SHALL TAKE PRECEDENCE. ANY CONFLICTS ARISING OUT OF INFORMATION AS NOTED ABOVE MUST BE REPORTED IMMEDIATELY TO MCM ARCHITECTURE LIMITED. THIS DRAWING IS THE COPYRIGHT OF MCM ARCHITECTURE LIMITED. ALL DIMENSIONS ARE IN MILLIMETRES UNLESS OTHERWISE STATED.

Planning - Legend

Key Plan



Material Key

- Proposed Render - StoColor System Grey 37203
- Proposed Render - StoColor System White 32109
- Glazing
- Aluminium Panels

P01 20/01/21 ISSUED FOR PLANNING MK AT
 REV DD/MM/YY PURPOSE OF ISSUE DRN BY CHK BY

CLIENT
Aspects RTM Limited

PROJECT
Aspects - Facade Replacement
 Sutton, South London

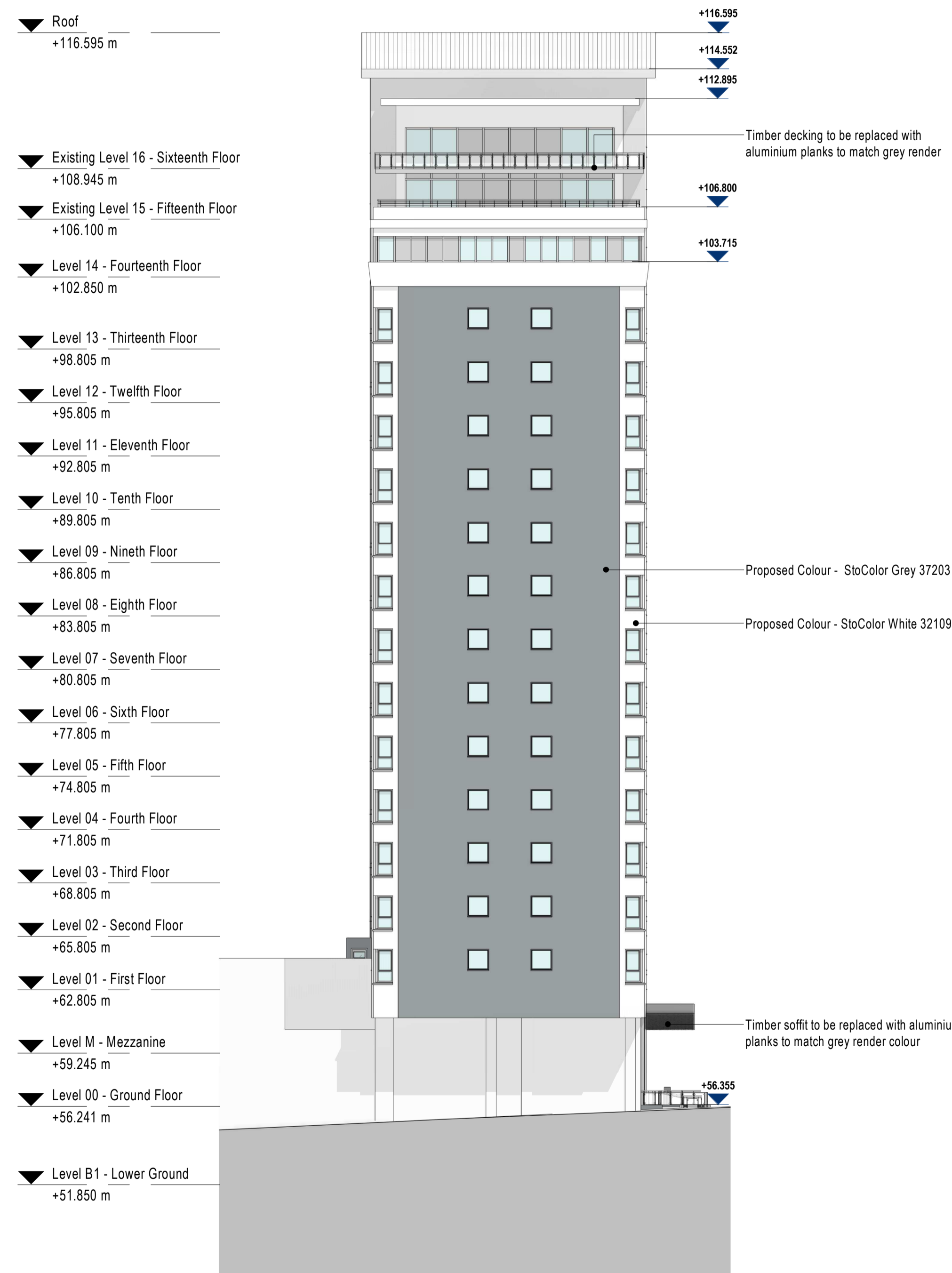
DRAWING TITLE
Proposed South Elevation

MCM PROJECT NUMBER SCALE
P20-049 As indicated @ A1

STATUS
Planning

DRAWING NUMBER
20049-MCM-XX-ZZ-DR-A-01126 P01

PROJ CODE	ORG	VOL	LVL	TYP	ROL	SERIES/NO	REV



- ▼ Roof +116.595 m
- ▼ Existing Level 16 - Sixteenth Floor +108.945 m
- ▼ Existing Level 15 - Fifteenth Floor +106.100 m
- ▼ Level 14 - Fourteenth Floor +102.850 m
- ▼ Level 13 - Thirteenth Floor +98.805 m
- ▼ Level 12 - Twelfth Floor +95.805 m
- ▼ Level 11 - Eleventh Floor +92.805 m
- ▼ Level 10 - Tenth Floor +89.805 m
- ▼ Level 09 - Ninth Floor +86.805 m
- ▼ Level 08 - Eighth Floor +83.805 m
- ▼ Level 07 - Seventh Floor +80.805 m
- ▼ Level 06 - Sixth Floor +77.805 m
- ▼ Level 05 - Fifth Floor +74.805 m
- ▼ Level 04 - Fourth Floor +71.805 m
- ▼ Level 03 - Third Floor +68.805 m
- ▼ Level 02 - Second Floor +65.805 m
- ▼ Level 01 - First Floor +62.805 m
- ▼ Level M - Mezzanine +59.245 m
- ▼ Level 00 - Ground Floor +56.241 m
- ▼ Level B1 - Lower Ground +51.850 m

Proposed South Elevation
 1 : 200