

A short distance away are Churchdown Hill (2) (aka Chosen Hill)



and Robinswood Hill Country Park (3)



which both have car parks and opportunities for long or short walks through woods and grassland, with beautiful views.

Cycling

Local cycle routes are set out on the following website:

<https://www.routeyou.com/en-gb/location/bike/47301854/cycling-in-brockworth-overview-of-all-cycle-routes>

Off-road cycle routes are available in North Woodchester, near Stroud:

<https://www.woodchesterparish.org.uk/community/bike-trails>

The Cannop Valley in the Forest of Dean:

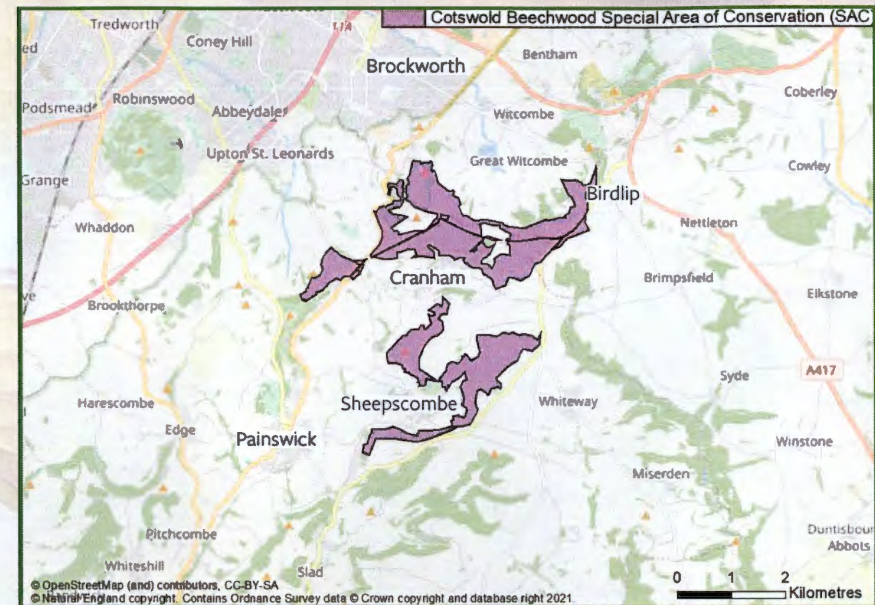
<https://www.forestryengland.uk/cannop-cycle-centre>

Special facilities for mountain bikers are available at nearby Flyup Bike Park:

<http://www.flyupdownhill.co.uk/>

For BMX riders at Churchdown Community Centre BMX track.

Protect our Cotswold Beechwoods Special Area of Conservation



Beechwoods grow naturally on the steep Cotswold slopes that rise above Brockworth. The woods shown on the map are internationally important for the special plants and animals that live there.

In much the same way as we hope that South American governments will protect their rainforests for the good of the world, we have an international responsibility to protect the plants and animals in our Cotswold Beechwoods. More information about the woods and the associated open common land can be found at:

<http://publications.naturalengland.org.uk/publication/4845529003458560?category=59026>

Unfortunately the sensitive habitats in the Beechwoods and commons are being affected by increasing numbers of visitors. Tracks are multiplying and widening and the ground flora is being eroded or damaged by cyclists, walkers and horse-riders. Dogs running free disturb the wildlife and their faeces is bad for both the flora and the livestock that grazes the commons.

Please be considerate about these special places. Alternative walking and cycling opportunities are outlined over-leaf.

If you do decide to visit the Beechwoods, please:

- Park in the designated areas, not on verges or informal spaces
- Walk on the marked footpaths and do not trample the vegetation
- Do not cycle when in the beechwoods
- Keep your dog on a lead
- Pick up after your dog.



Walking and Cycling in Brockworth and Around

There are many attractive walks and cycle routes to enjoy in this area. The map shows some great places to walk.



Walking

Route 1 leads along Golf Club Lane to Nuthill, with lovely views over Prinknash and the Severn Vale. It also passes through an ancient part of Upton St Leonards before circling back.

