

- This drawing is to be read in conjunction with all relevant engineering drawings and specifications.
- All dimensions are in millimetres unless stated otherwise.
- The contractor is to verify all dimensions on site and is responsible for the accuracy setting-out.
- Do not scale from this drawing. All sizes scaled from this drawing will be approximate and should be checked on site by the user, if in doubt ask.

Automatic sliding doors to be installed in accordance with BS 7036: 1996 inclusive of the following:
 The door must fail safely to the open position.
 The door must be provided with a monitored fail-safe system for opening the door from any position in the event of mains supply failure and also in the event of failure of the opening sensing device.
 The door must open automatically from any position in the event of activation of the fire alarm in the fire alarm zone within which the door is situated.

Denotes Travel Distance to place of safety.
 "Place of safety" as noted above design to 3 categories:
 • direct escape
 • internal escape
 • external escape.

Direct escape
 Occupants can escape from a building directly to a place of safety by way of a final exit door without using an internal or external escape route.

Internal escape
 Occupants escape from fire using enclosed corridors and stairs inside the building to reach a final exit door from the building, which leads to a place of safety.

External escape
 External escape routes include external escape stairs, access decks and flat roofs.

- (A) Ceiling Mounted Light Fitting
- (A) Wall Mounted Light Fitting with Emergency Pack
- (E) Illuminated Emergency Exit (running man)
- (P) PIR Detector
- (S) Light Switch
- (D) Double Socket
- (F) Extract Fan
- (FAP) Fire Alarm Panel
- (G) Fire Alarm Break Glass Unit
- (C) Combined Detector Sounder

SPECIFICATION NOTES

All works to be carried out in accordance with the building (Scotland) regulations 2015 and all current amendments.

All new works, products and processes are to be in accordance with the relevant British Standards and Manufacturers guidance.

ASBESTOS
 The client is to provide an up to date Asbestos Report prior to commencement of any works to existing building.

FIRE PROTECTION
Escape Routes
 Travel distances to be in compliance with the requirement of maximum 18m in one direction and 45m when in more than one direction.

Fire Alarm System
 The fire alarm system shall comply with protection of property category L1.
 New fire alarm system shall be tied in or interlinked with existing Fire alarm system.

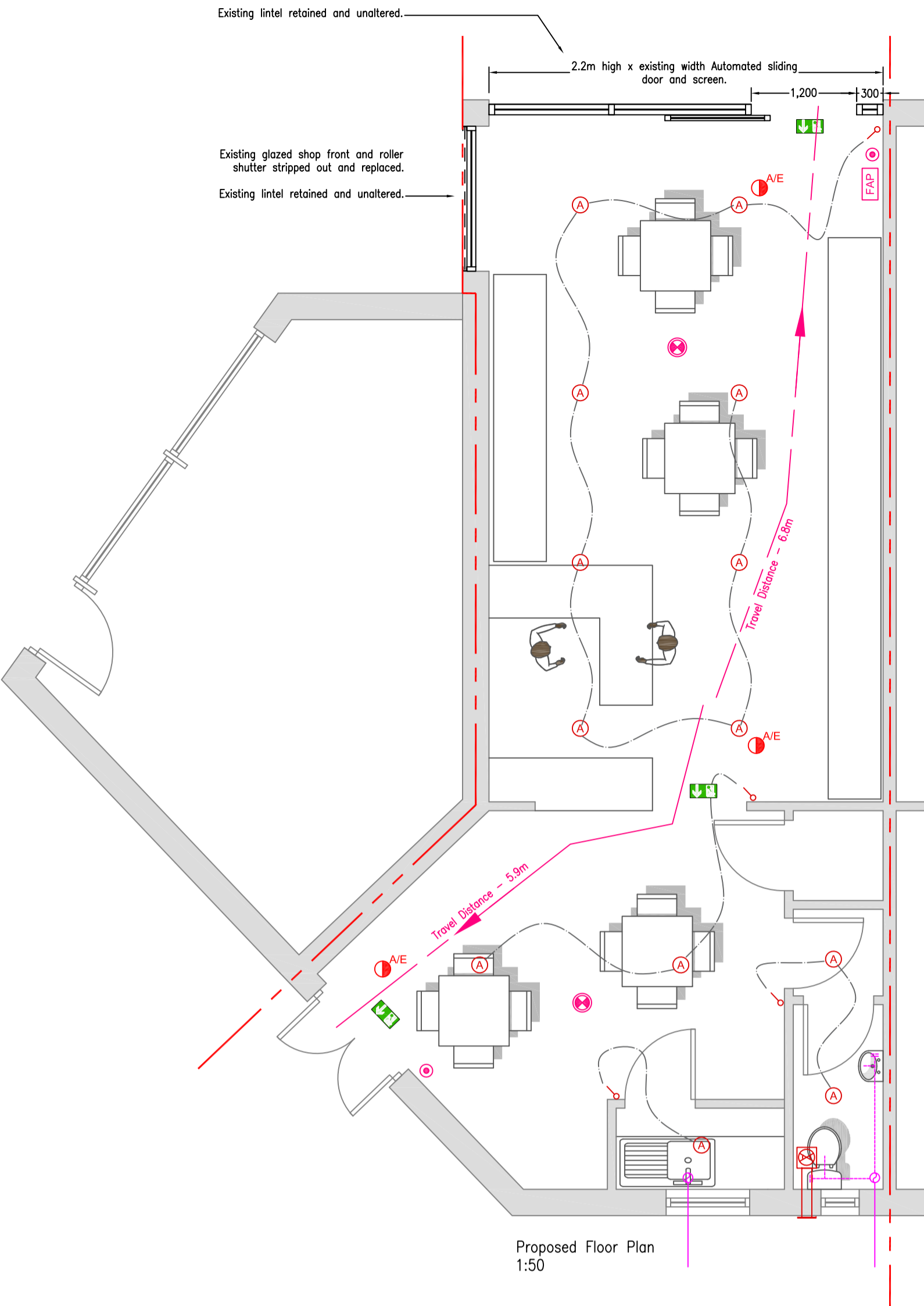
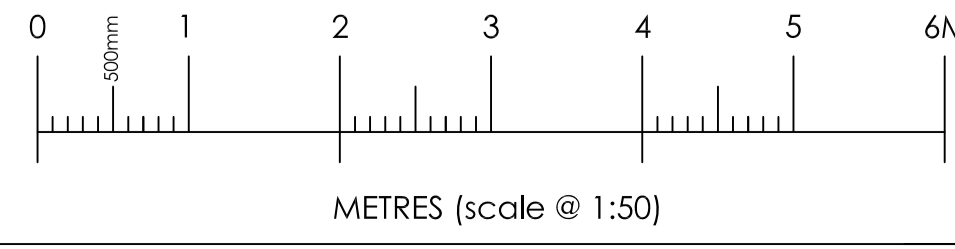
Automatic detection to be provided suitable for use at operating temperature of +4°C.

Emergency Lighting
 The emergency lighting installation shall comply with BS 5266:2005 in full and to local Building Control and Fire Officer requirements. The system shall include the required number of self-contained emergency luminaires having 3-hour duration, provided to cover all means of escape throughout the building. The provision of illuminated exit signs (BS 5499 pt 1990) having European directive format is to be included. Testing facility to be on every general lighting circuit supplying emergency luminaires. This will comprise of key switches that shall break the charging circuit to the luminaires thereby switching operation of the emergency lamps to the emergency battery pack. The key switch is to be complete with neon indicator and buzzer and is to be located in the local distribution cupboard.
 All steelwork columns to external walls with boundary conditions are to be fire protected with intumescent applied coating up to the underside of the rafters, to achieve 60min duration resistance to fire.

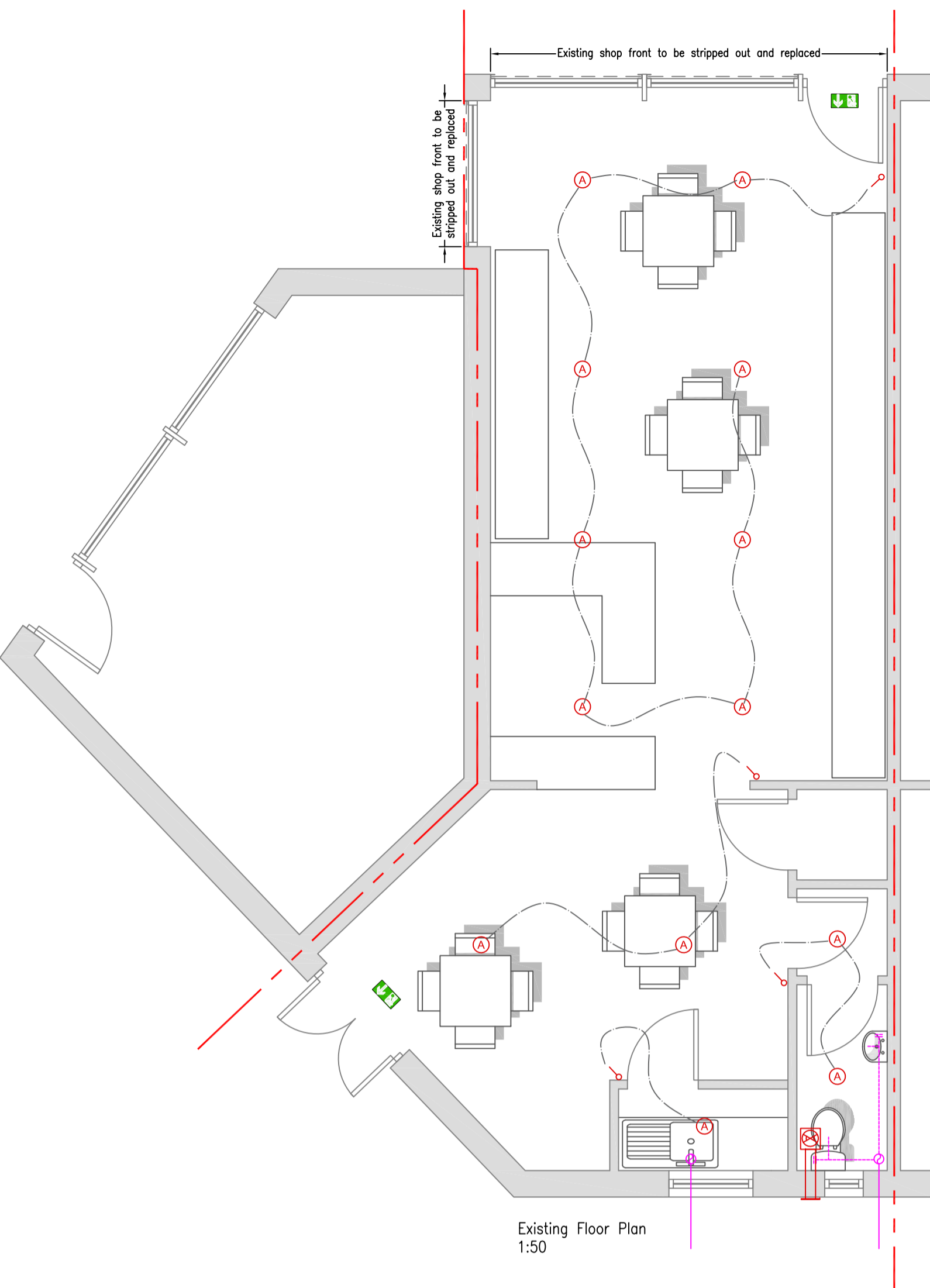
ELECTRICS
 All electrical installations are to comply with the relevant requirements of BS 7671:2018 and to be undertaken by a contractor with membership to SELECT or NIC/EC.
 All electrical work to comply with the up to date IEE Regulations.
 All sockets to be double at located 400mm above ffl.
 All light switches to be located between 900 & 1050mm above the ffl.

LIGHTING
 New areas to be provided by surface mounted LED fittings with emergency packs to suit the fire strategy to provide 450 LUX 1000mm d/FL with PIR controlled switching designed by specialist contractor.

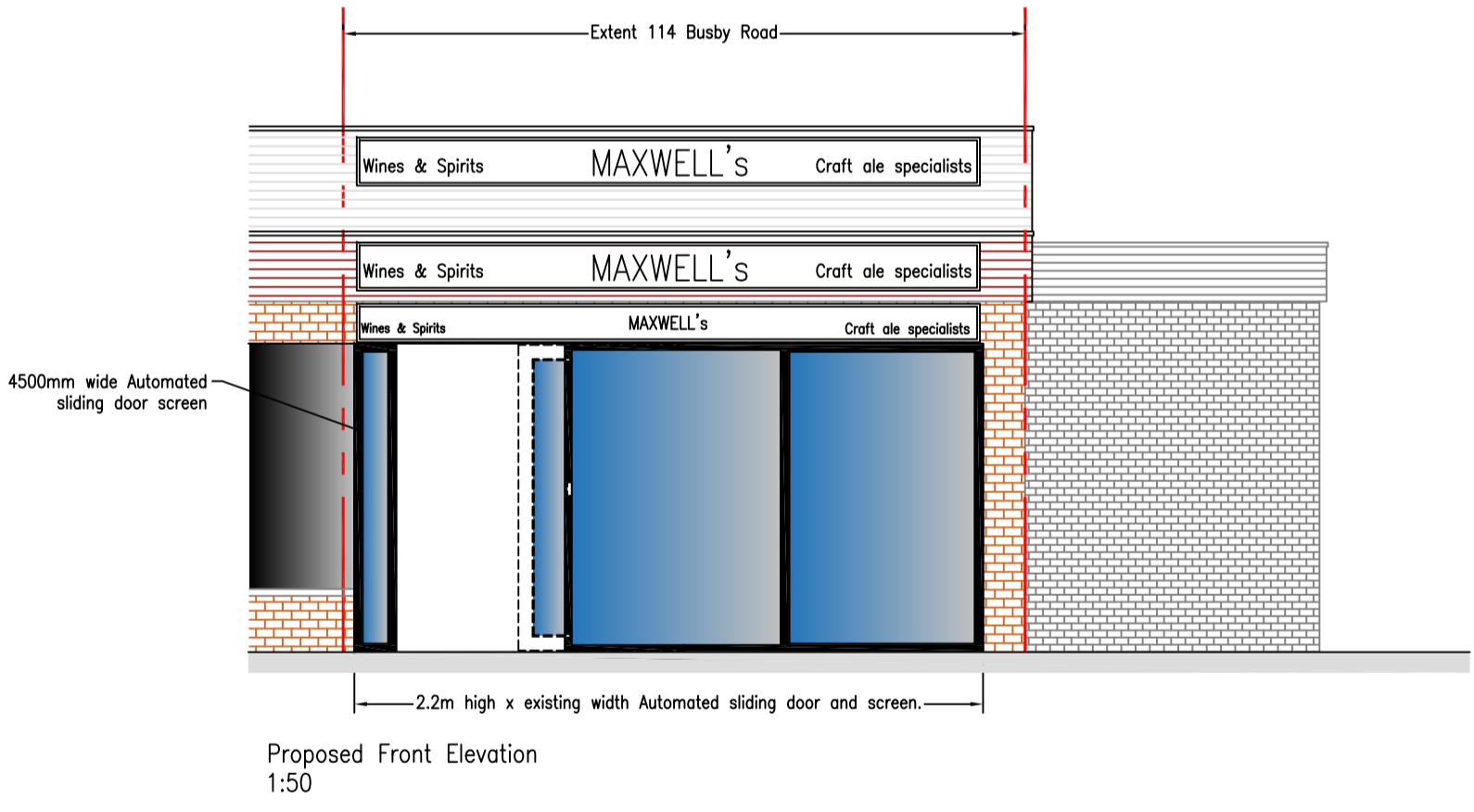
OR	Description	By	Date
 Design Solutions Ltd International House Suite 3/3 Stanley Boulevard Hamilton International Technology Park Hamilton G72 8BN Tel: 01568 404840 Email: dsd@dsdesign.co.uk			
Drawn: BUILDING WARRANT Project Name: Proposed new shopfront, 114 Busby Rd, Clarkston, Glasgow G76 8BG Drawn: Proposed Alterations.			
Rev	Description	By	Date
1	ISSUED		5/3/21



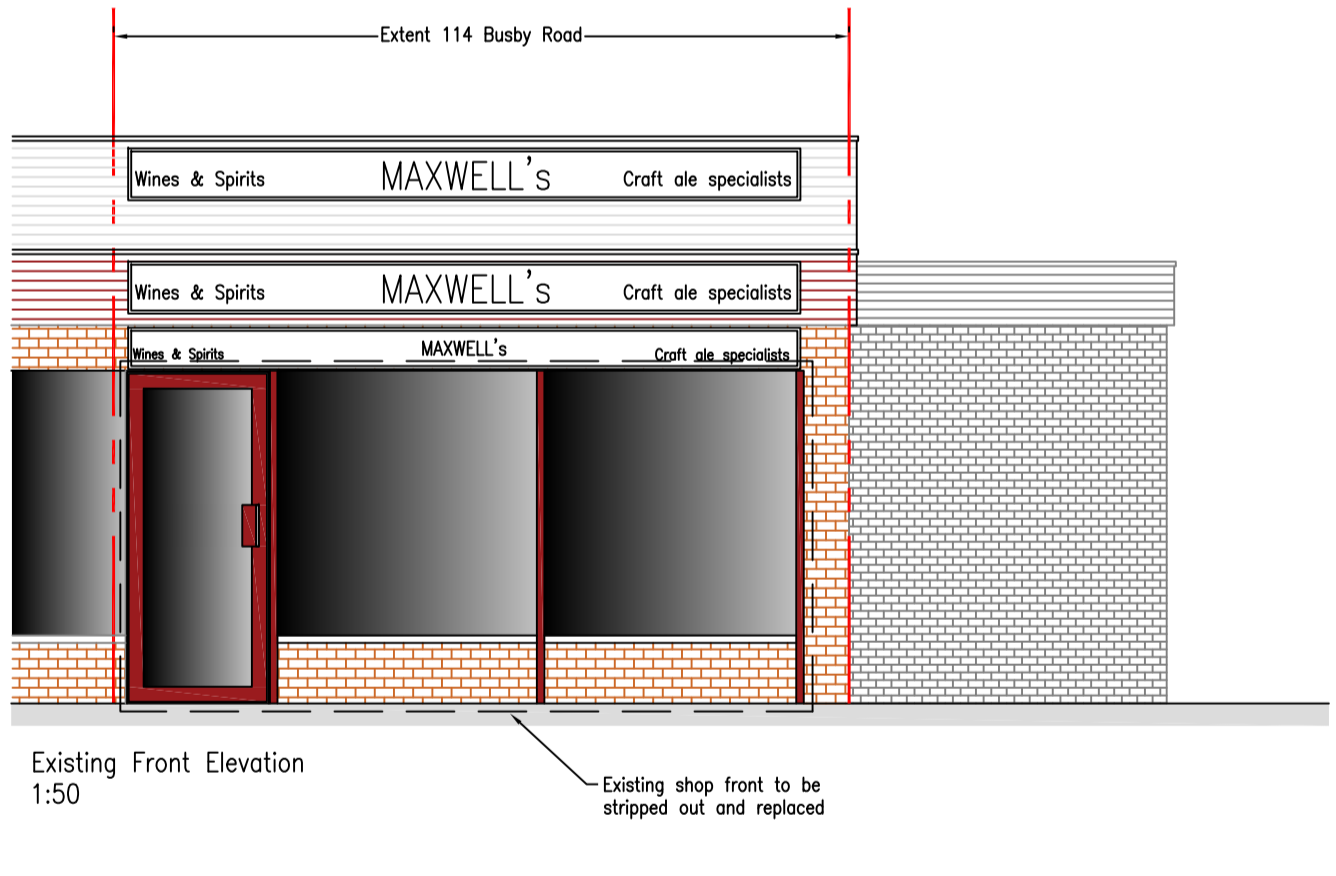
Proposed Floor Plan 1:50



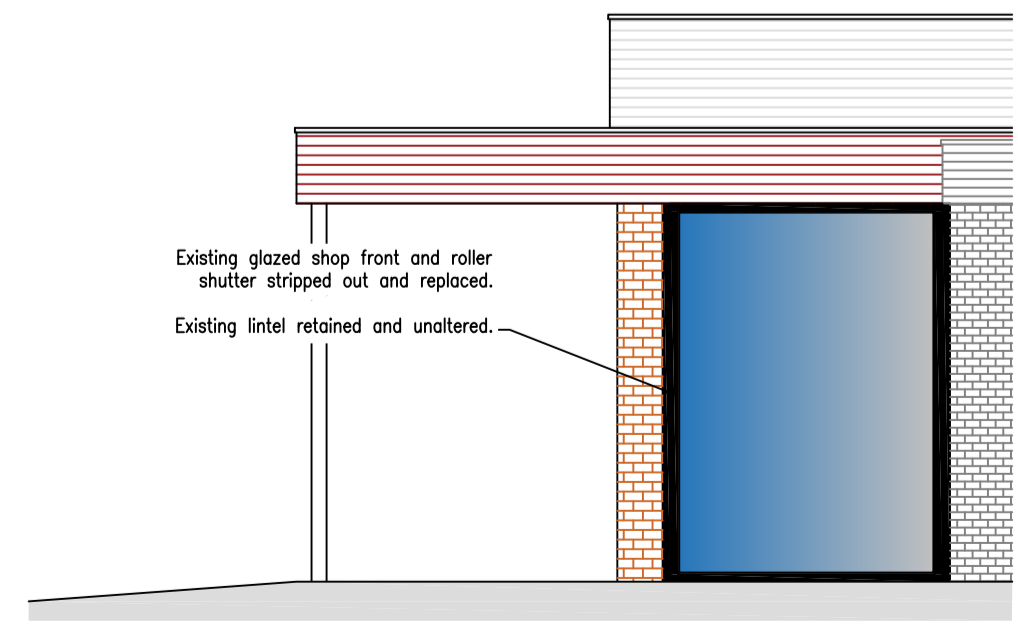
Existing Floor Plan 1:50



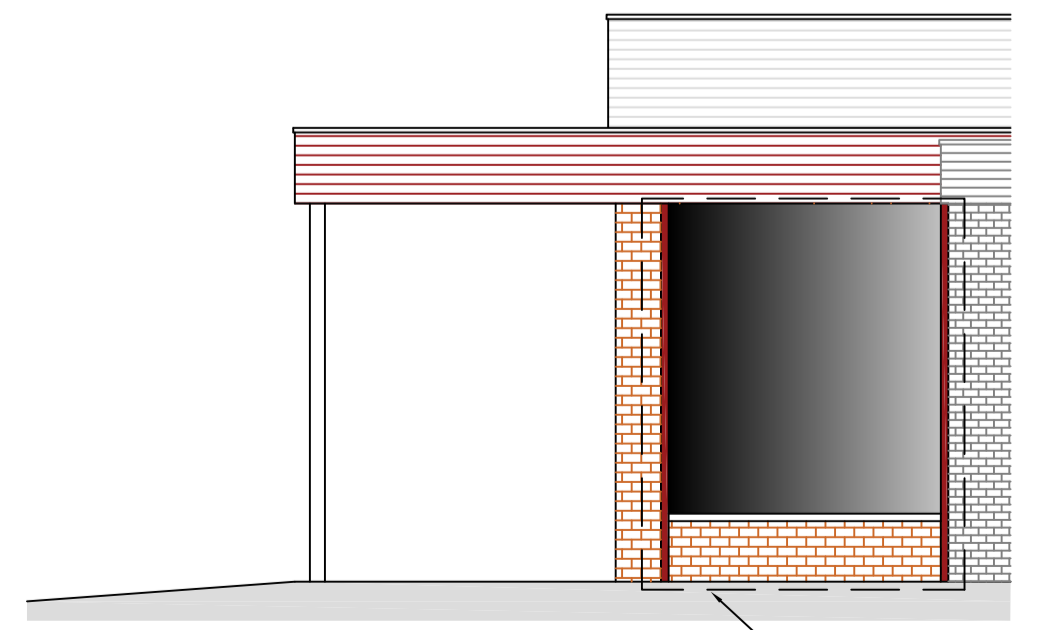
Proposed Front Elevation 1:50



Existing Front Elevation 1:50



Proposed Side Elevation 1:50



Existing Side Elevation 1:50