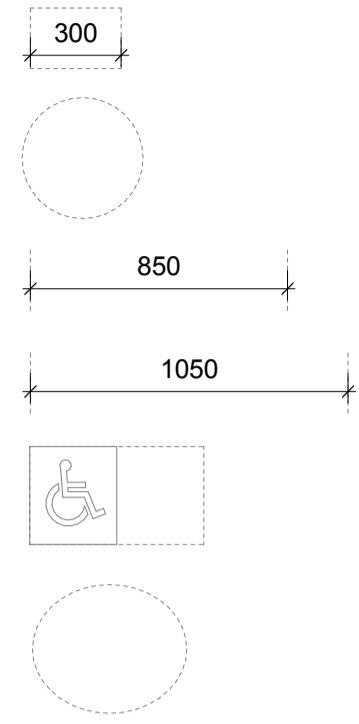


**Part M(3) Space Requirements for Wheelchair User Dwellings:**

**General:**



Min. 300mm nib provided to the leading edge of doors, 200mm to following edge

Min. 1500mm clear turning circle inside entrance, in front of door when closed

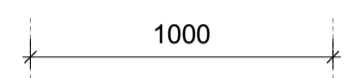
Min. 850mm door clear opening width

Min. 1050mm clear hallway width, or 1200mm when approach to door is not head on

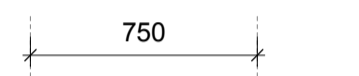
Min. 1100mm x 1700mm wide space must be allocated for wheelchair transfer / storage

Min. 1500mm x 1800mm turning ellipse to kitchen

**Bedrooms:**

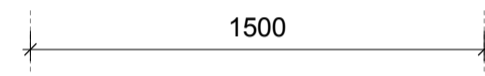


Principle double bedroom to provide 1000mm wide clear access zone to both sides and foot of the bed and 1200mm x 1200mm manoeuvring space to either side of the bed



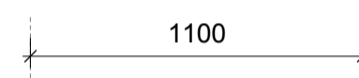
Every bedroom to provide a clear 750mm access route from door to the window, along with a 1200mm x 1200mm manoeuvring space.

**Accessible Bathrooms:**



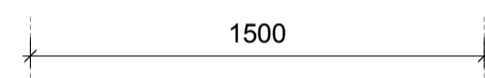
Provide a 1500mm clear turning circle

Accessible bathroom door to open out

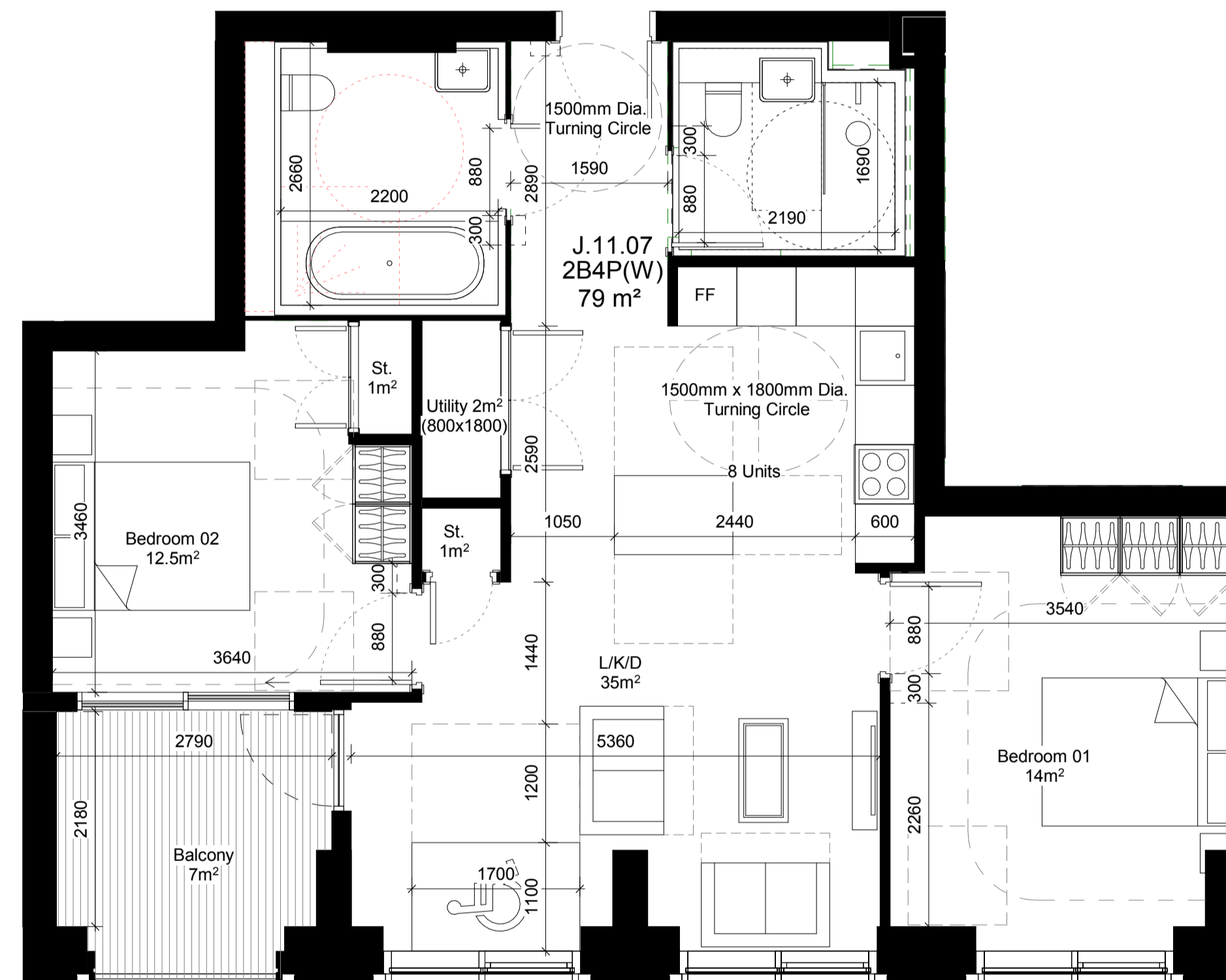


Provide clear area of 1100mm in front of WC, and 1000mm to the side

**Private Outdoor Space**

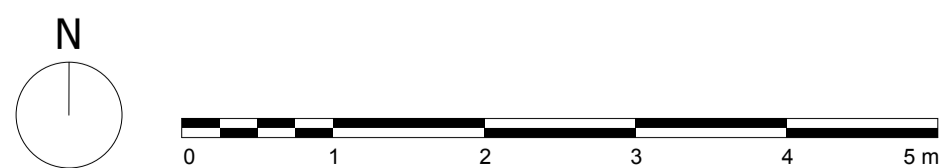
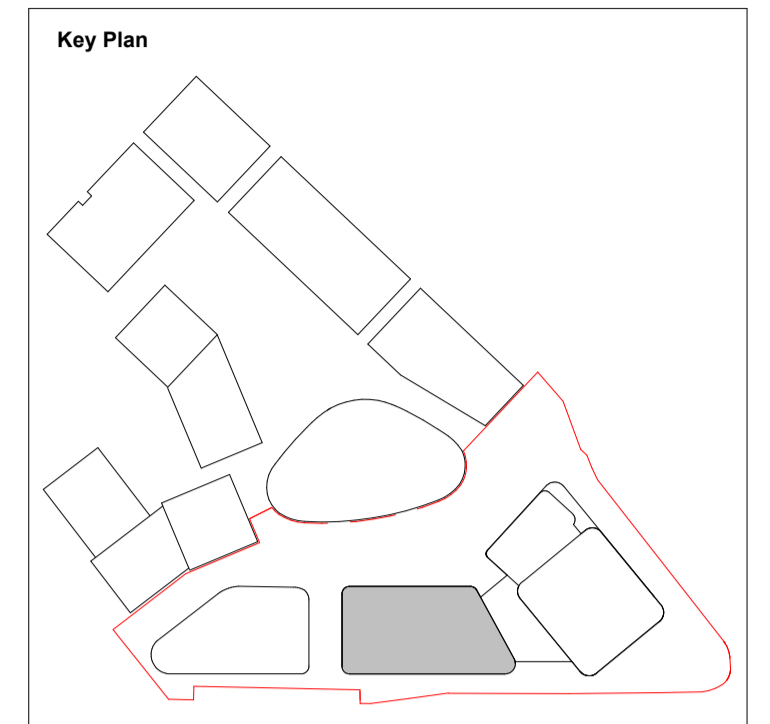


1500mm minimum clear width



Do not scale from this drawing. All dimensions to be checked on site. All omissions and discrepancies to be reported to the Architect immediately

This work is copyright and shall not be reproduced or used for any other purpose without the written permission of Squire and Partners.



Description	Date	Chk	Rev
Issued for Planning	26/03/21		P1

**SQUIRE & PARTNERS**

Squire and Partners LLP  
The Department Store  
248 Ferndale Road, London SW9 8FR  
T: 020 7278 5555

info@squireandpartners.com  
www.squireandpartners.com

Project  
**Paddington Green Police Station**  
London, W2

Title  
**Block J - Wheelchair accessible Typical 06**  
Level 11  
**Apartment J.04.07**

Suitability Status  
**S2 For Information**

Date Scale @ ISO A1 Job Number  
**26.03.21 1:50 15044**

Drawing Number Revision  
**15044-SQP-02-11-DP-A-PL01209 P1**