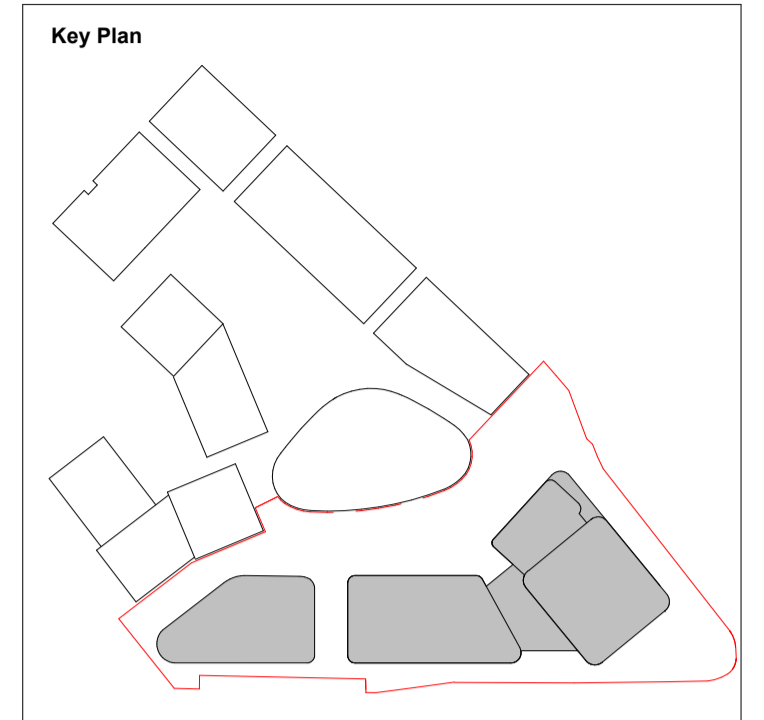


Do not scale from this drawing. All dimensions to be checked on site. All omissions and discrepancies to be reported to the Architect immediately

This work is copyright and shall not be reproduced or used for any other purpose without the written permission of Squire and Partners.



Key

	Proposed Planning Boundary
	PGPS Site Boundary
	Cycle Shortfall Reallocation

**Basement 1 Residential Cycle Provisions**

Block I = 338 Josta + 18 Sheffield  
= 356 Cycle Spaces

Block J = 244 Josta + 32 Sheffield  
= 276 Cycle Spaces

Block K = 246 Josta  
= 246 Cycle Spaces

828 Josta + 50 Sheffield  
**TOTAL = 878 Cycle Spaces**

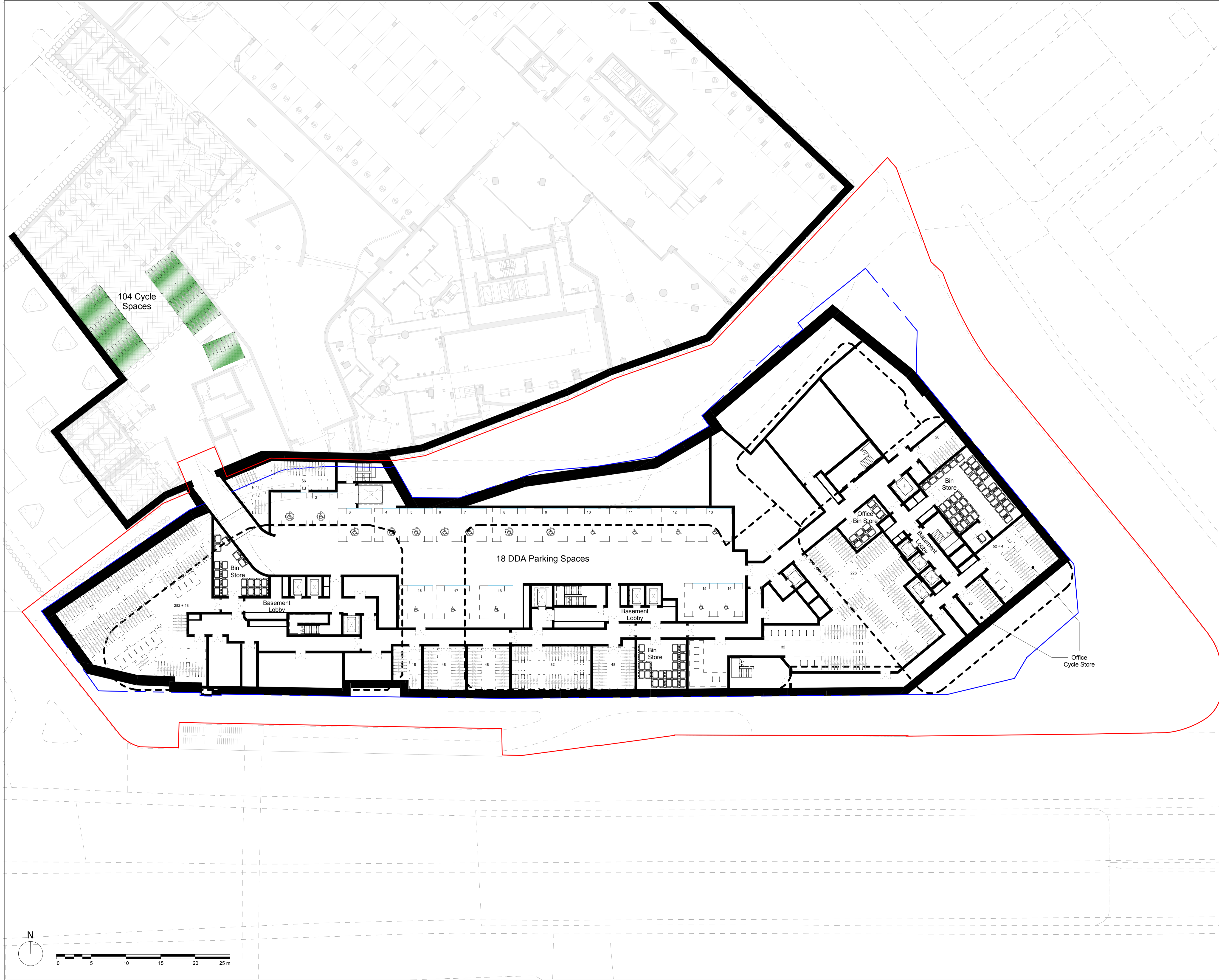
Target = 982 Cycle Spaces  
(including 50 Sheffield)

**104 shortfall Cycle Spaces provided in WEG**

**Basement 1 Office/Workspace Provisions**

Block K = 71 Josta + 4 Sheffield  
**TOTAL = 75 Cycle Spaces**

**Overall Total = 953 Cycle Spaces provided in PGPS Basement -1**



Issued For Planning	26/03/21	P1
Description	Date	Chk Rev

**SQUIRE & PARTNERS**

Squire and Partners LLP  
The Department Store  
248 Ferndale Road, London SW9 8FR  
T: 020 7278 5555  
info@squireandpartners.com  
www.squireandpartners.com

Project  
Paddington Green Police Station  
London, W2

Title  
Proposed Basement -1

Suitability	Status	Job Number
S2	For Information	15044
Date	Scale @ ISO A1	Job Number
26.03.21	1 : 250	15044
Drawing Number	Revision	
15044-SQP-ZZ-B1-DP-A-PL01103	P1	