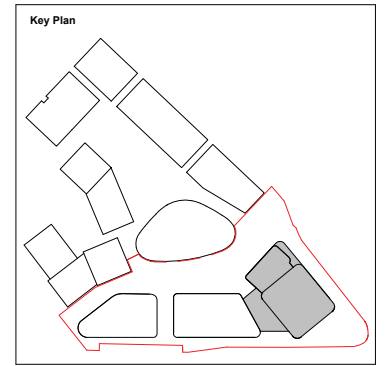


Do not scale from this drawing. All dimensions to be checked on site. All omissions and discrepancies to be reported to the Architect immediately

This work is copyright and shall not be reproduced or used for any other purpose without the written permission of Squire and Partners.



Block K - Typical 01, Levels 3-10 Private

Wheelchair Accessible Unit  
Ref: 15044-SQP-03-ZZ-DP-A-PL01216

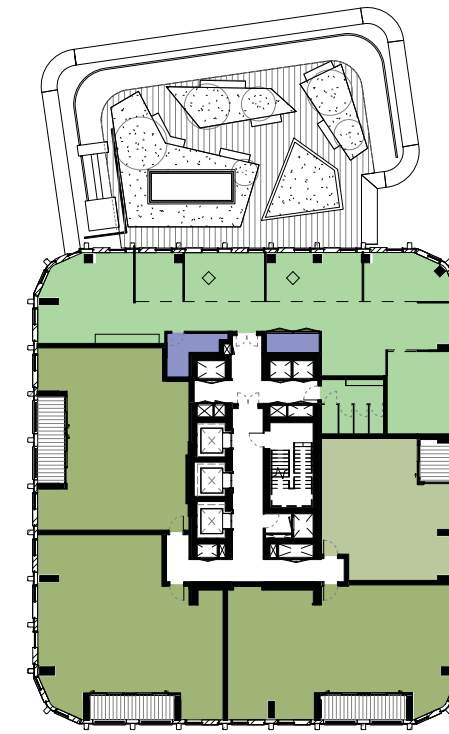


Block K - Typical 02, Levels 11-15 Private

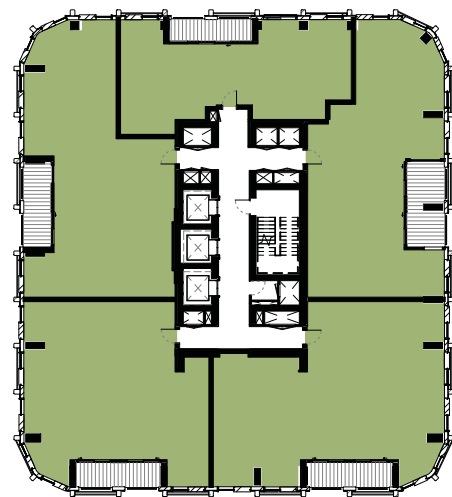
Wheelchair Accessible Unit  
Ref: 15044-SQP-03-ZZ-DP-A-PL01216



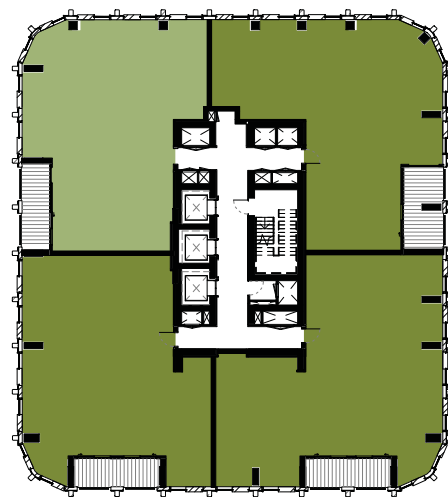
Block K - Typical 03, Levels 16-24 Private



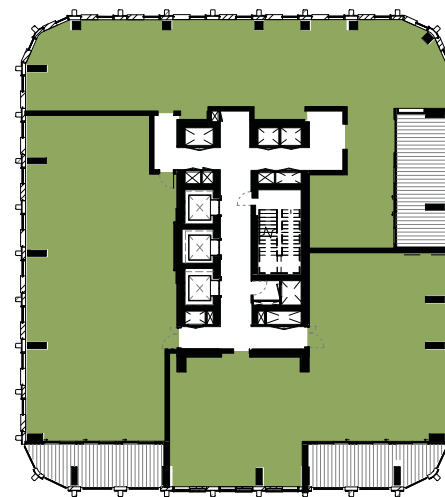
Block K - Residents Lounge, Level 25 Private



Block K - Typical 04, Levels 26-29 Private



Block K - Typical 05, Level 30 Private



Block K - Penthouse Typical - Level 31 Private

Tenure: PRIVATE

- 1 Bed
- 2 Bed
- 3 Bed
- 4 Bed

Tenure: INTERMEDIATE

- 1 Bed
- 2 Bed

Tenure: SOCIAL RENTED

- 1 Bed
- 2 Bed
- 3 Bed
- 4 Bed

CATEGORY M(4)3 (WHEELCHAIR) ADAPTABLE APARTMENTS

Issued for Planning	26/03/21	P1
Description	Date	Chk Rev

## SQUIRE & PARTNERS

Squire and Partners LLP  
The Department Store  
248 Finsdale Road, London SW9 8FR  
T: 020 7278 5555

info@squireandpartners.com  
www.squireandpartners.com

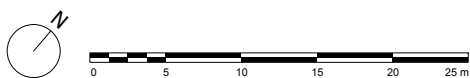
Project  
Paddington Green Police Station  
London, W2

Title  
Block K  
Proposed Mix and Tenure Plan

Suitability Status  
S2 For Information

Date Scale @ ISO A1 Job Number  
26.03.21 1:250 15044

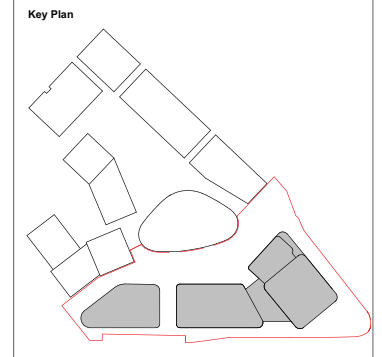
Drawing Number Revision  
15044-SQP-03-ZZ-DP-A-PL01252 P1



Do not scale from this drawing. All dimensions to be checked on site. All omissions and discrepancies to be reported to the Architect immediately

This work is copyright and shall not be reproduced or used for any other purpose without the written permission of Squire and Partners.

- Bike Store
- Resi Cycle lift
- Office Cycle lift
- Users link between lift cycling facilities / bike store
- Bike Store Shortfall



Key

	Proposed Planning Boundary
	PGPS Site Boundary
	Cycle Shortfall Reallocation

**Basement 1 Residential Cycle Provisions**

Block I = 338 Josta + 18 Sheffield  
= 356 Cycle Spaces

Block J = 244 Josta + 32 Sheffield  
= 276 Cycle Spaces

Block K = 246 Josta  
= 246 Cycle Spaces

828 Josta + 50 Sheffield  
**TOTAL = 878 Cycle Spaces**

Target = 982 Cycle Spaces  
(including 50 Sheffield)

**104 shortfall Cycle Spaces provided in WEG**

**Basement 1 Office/Workspace Provisions**

Block K = 71 Josta + 4 Sheffield  
**TOTAL = 75 Cycle Spaces**

**Overall Total = 953 Cycle Spaces provided in PGPS Basement -1**

Issued For Planning	26/03/21	P1
Description	Date	Chk Rev

**SQUIRE & PARTNERS**

Squire and Partners LLP  
The Department Store  
248 Finsdale Road, London SW9 8FR  
T: 020 7278 5555

info@squireandpartners.com  
www.squireandpartners.com

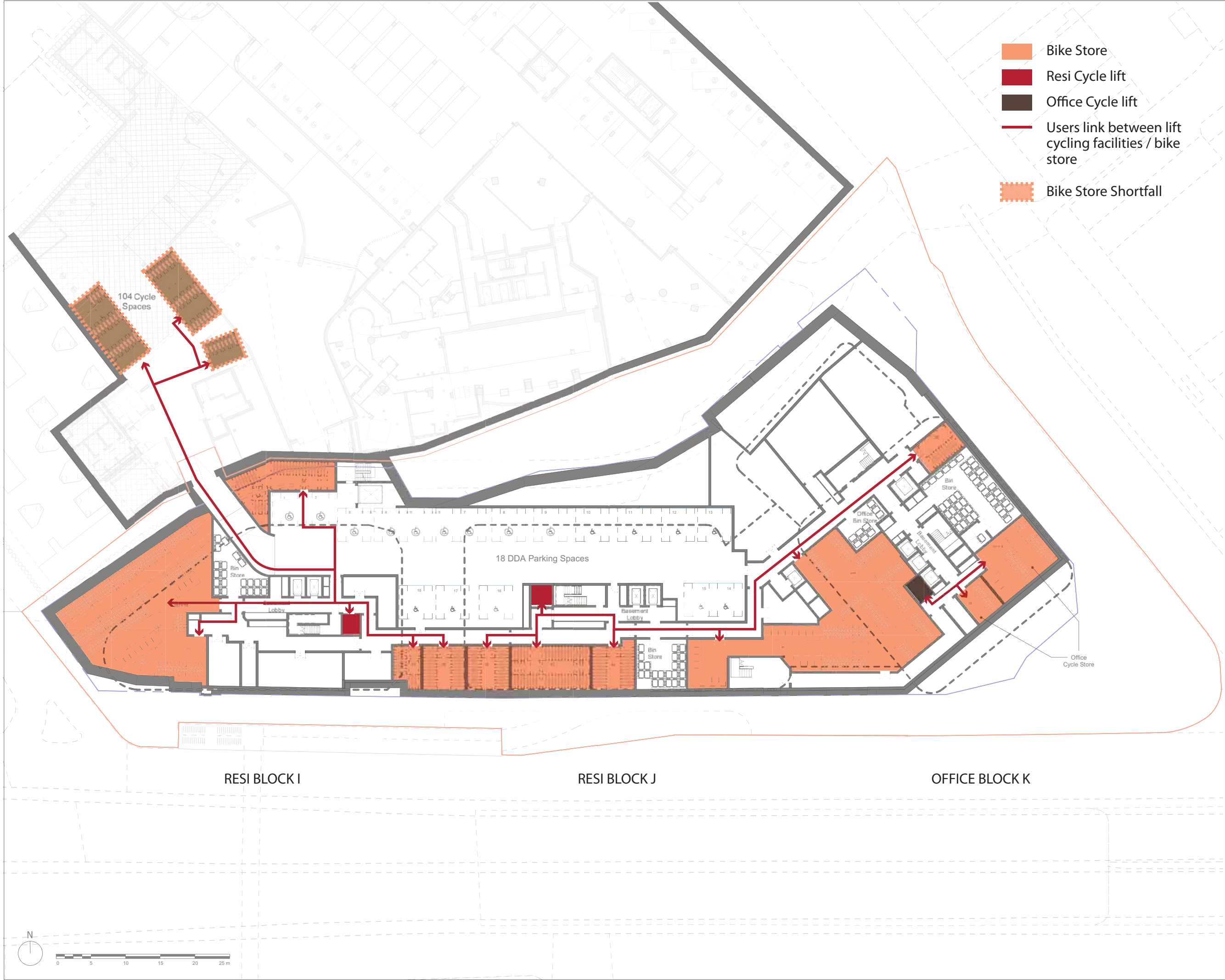
Project  
Paddington Green Police Station  
London, W2

Title  
Proposed Basement Cycle Strategy Plan

Suitability Status  
**S2 For Information**

Date Scale @ ISO A1 Job Number  
26.03.21 1 : 250 15044

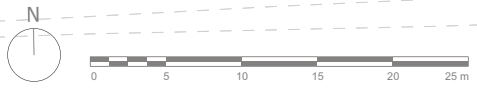
Drawing Number Revision  
15044-SQP-ZZ-B1-DR-A-PL01161 P1



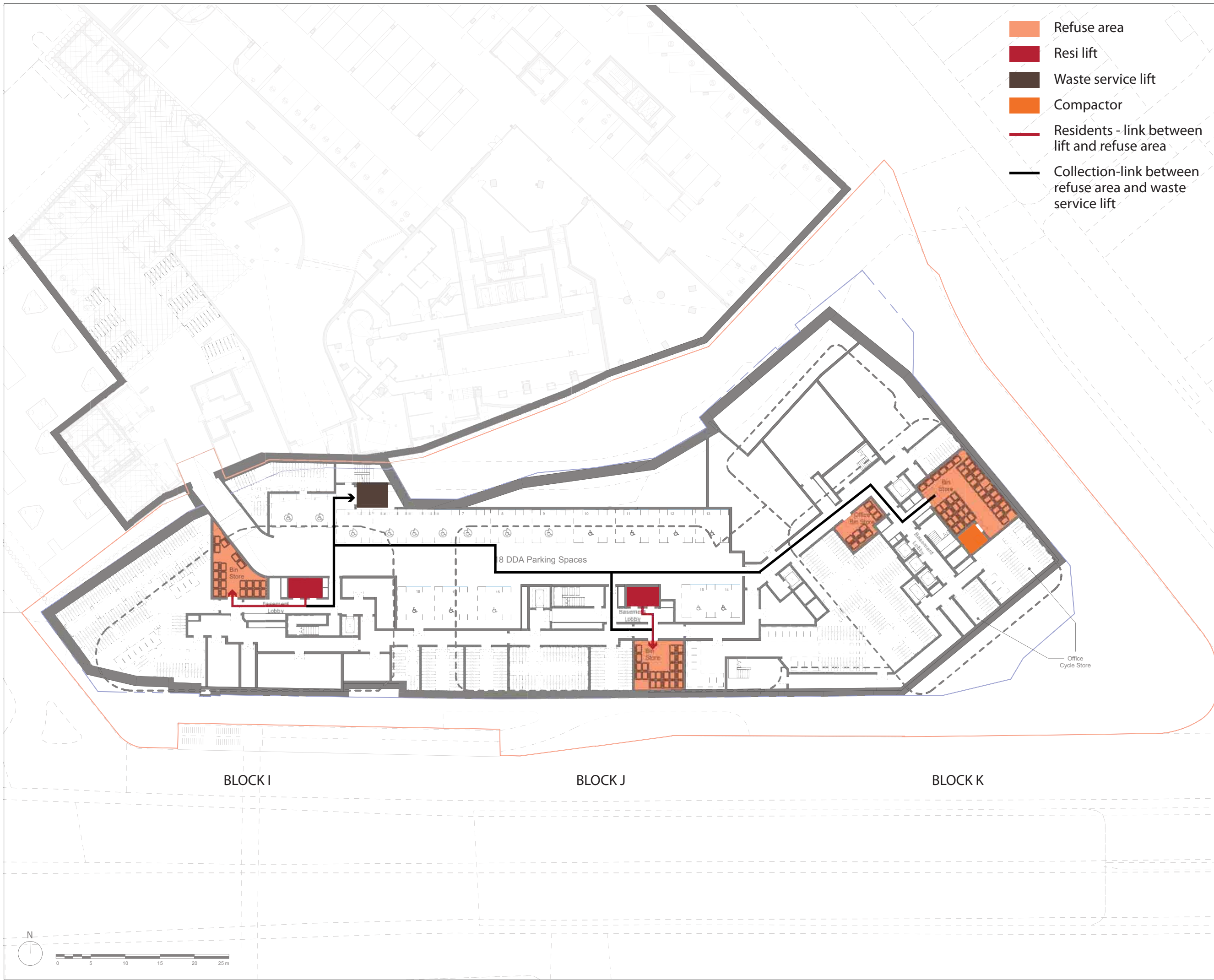
RESI BLOCK I

RESI BLOCK J

OFFICE BLOCK K



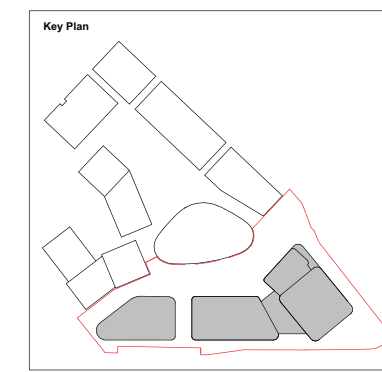




- Refuse area
- Resi lift
- Waste service lift
- Compactor
- Residents - link between lift and refuse area
- Collection-link between refuse area and waste service lift

Do not scale from this drawing. All dimensions to be checked on site. All omissions and discrepancies to be reported to the Architect immediately

This work is copyright and shall not be reproduced or used for any other purpose without the written permission of Squire and Partners.



**Key**

<span style="border-bottom: 2px solid red; width: 20px; display: inline-block;"></span>	Proposed Planning Boundary
<span style="border-bottom: 2px dashed blue; width: 20px; display: inline-block;"></span>	PGPS Site Boundary

Issued For Planning	26/03/21	P1
Description	Date	Chk Rev

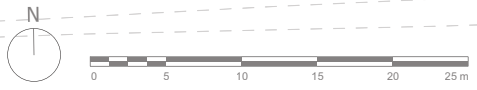
## SQUIRE & PARTNERS

Squire and Partners LLP  
 The Department Store  
 248 Farnside Road, London SW9 8FR  
 T: 020 7278 5555  
 info@squireandpartners.com  
 www.squireandpartners.com

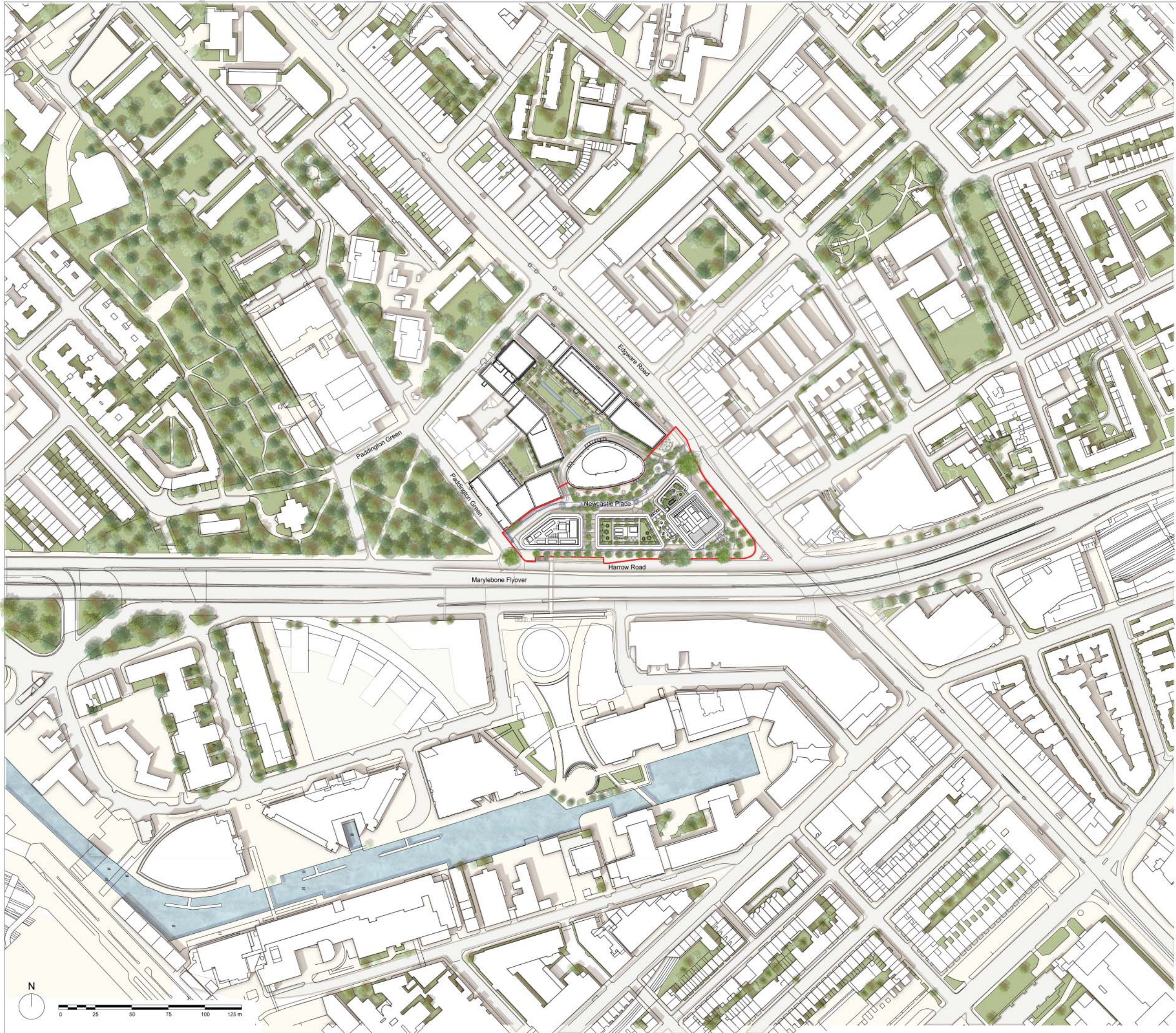
**Project**  
 Paddington Green Police Station  
 London, W2

**Title**  
 Proposed Basement Waste Strategy Plan

Suitability	Status	Scale @ ISO A1	Job Number
S2	For Information	1 : 250	15044
Date	26.03.21	Drawing Number	15044-SQP-ZZ-B1-DR-A-PL01160
			Revision P1







Do not scale from this drawing. All dimensions to be checked on site. All omissions and discrepancies to be reported to the Architect immediately

This work is copyright and shall not be reproduced or used for any other purpose without the written permission of Squire and Partners.

Key

	Planning Application Site Boundary
	PGPS Site Boundary

Issued for Planning	26/03/21	P1
Description	Date	Chk Rev

## SQUIRE & PARTNERS

Squire and Partners LLP  
 The Department Store  
 248 Fendale Road, London SW9 8FR  
 T: 020 7276 5555  
 info@squireandpartners.com  
 www.squireandpartners.com

Project  
**Paddington Green Police Station**  
 London, W2

Title  
**Proposed Location Plan**

Suitability	Status	Job Number
S2	For Information	15044
Date	Scale @ ISO A1	Revision
26.03.21	1:1250	15044
Drawing Number		Revision
15044-SQP-ZZ-ZZ-DP-A-PL01101		P1



