

3.7 Waste Collection

On the nominated waste collection days, the WCC waste management contractor will enter the site via the WEG car park/service area access ramp and will park their RCV in the service bay immediately adjacent to the waste presentation area provided.

The indicative parking location for the WCC RCV is shown in Figure 3.12.

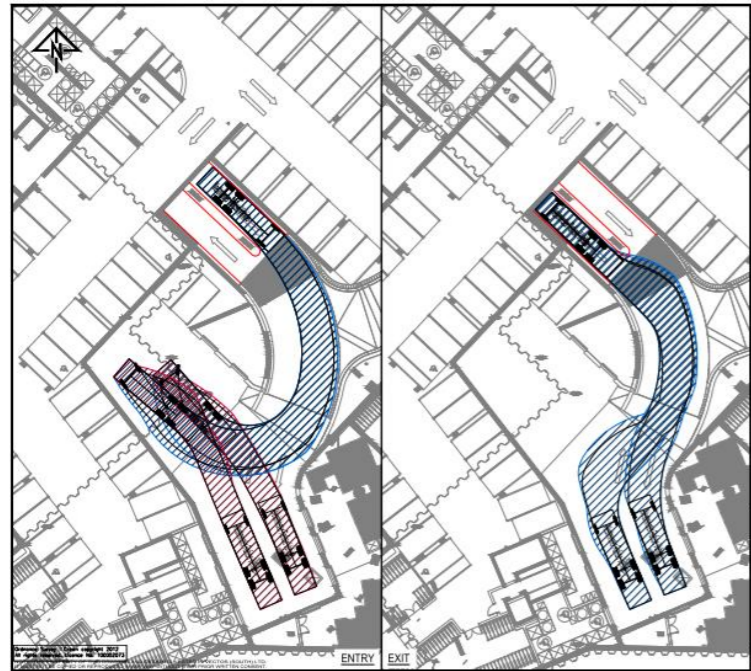


Figure 3.13 - RCV Swept Paths

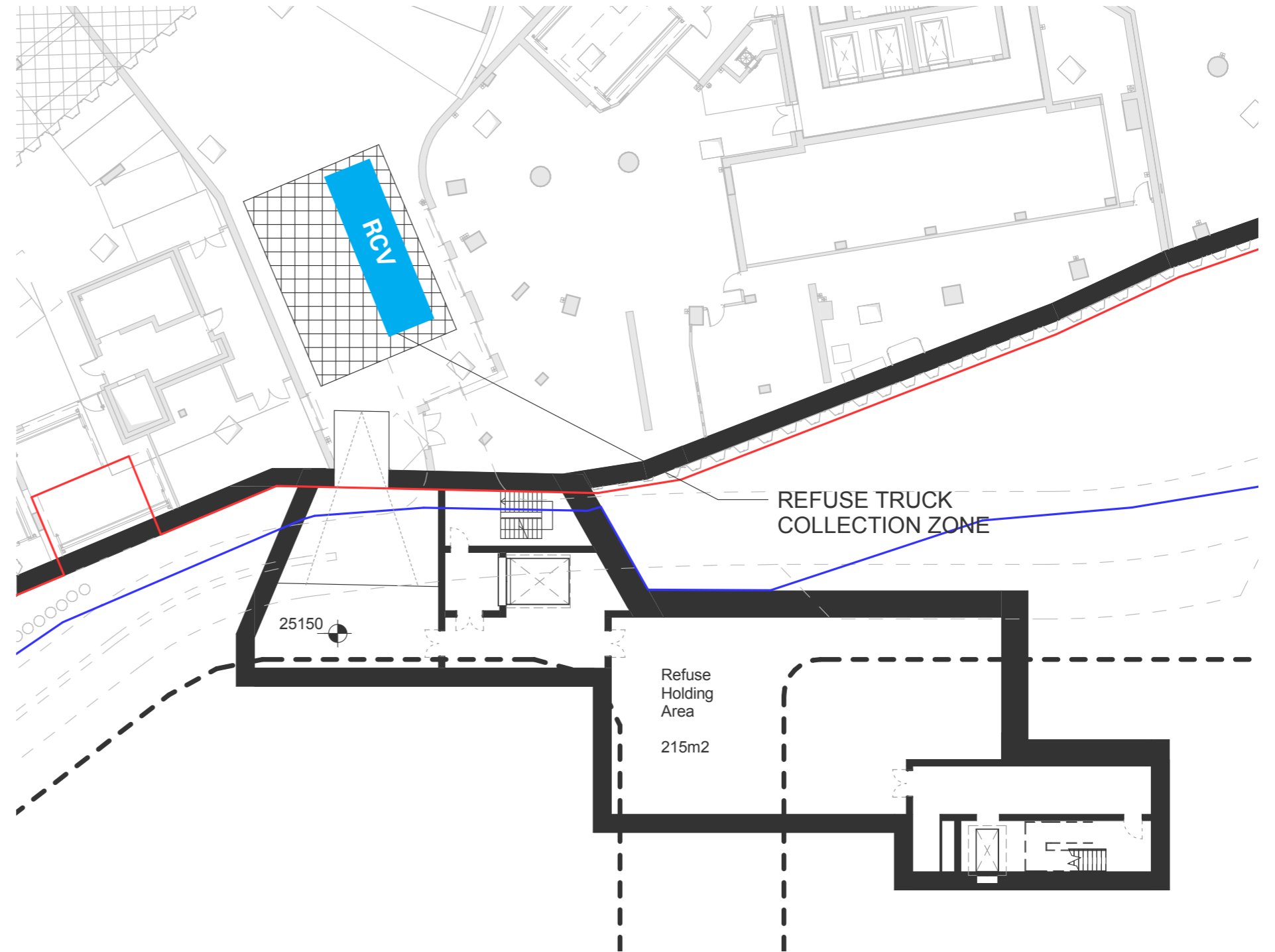


Figure 3.12 - RCV Parking Location

4.0 Management of Operational Waste - Residential Amenity Space

4.1 Introduction

This section outlines the strategy which will be adopted to manage the waste arising from the residential amenity space within the Proposed Development once operational.

4.2 Waste Generation Model - Residential Amenity Space

The proposed private residential amenity space within the Proposed Development is located at ground floor level within Block K and contains a virtual golf room.

The proposed residential amenity facilities will be designated for the sole use of the residents and no commercial activities will be undertaken.

The residential amenity space is in effect an extension of the residential dwellings within the Proposed Development and will therefore be classified as municipal waste. It is therefore considered that the waste generation levels will be minimal and are included within the residential waste calculations detailed in Chapter 3 of this report.

4.3 Proposed Waste management strategy - Residential amenity space

Any waste generated within the residential amenity space will be stored in domestic-style waste containers/bins (Figure 4.2) within the various amenity areas.

The waste will be regularly removed from the bins in the residential amenity spaces by the on-site FM team as part of their ongoing daily cleaning activities, and will be transported to the main residential waste storage area where it will be placed in the appropriate compactor (refuse or recyclables).

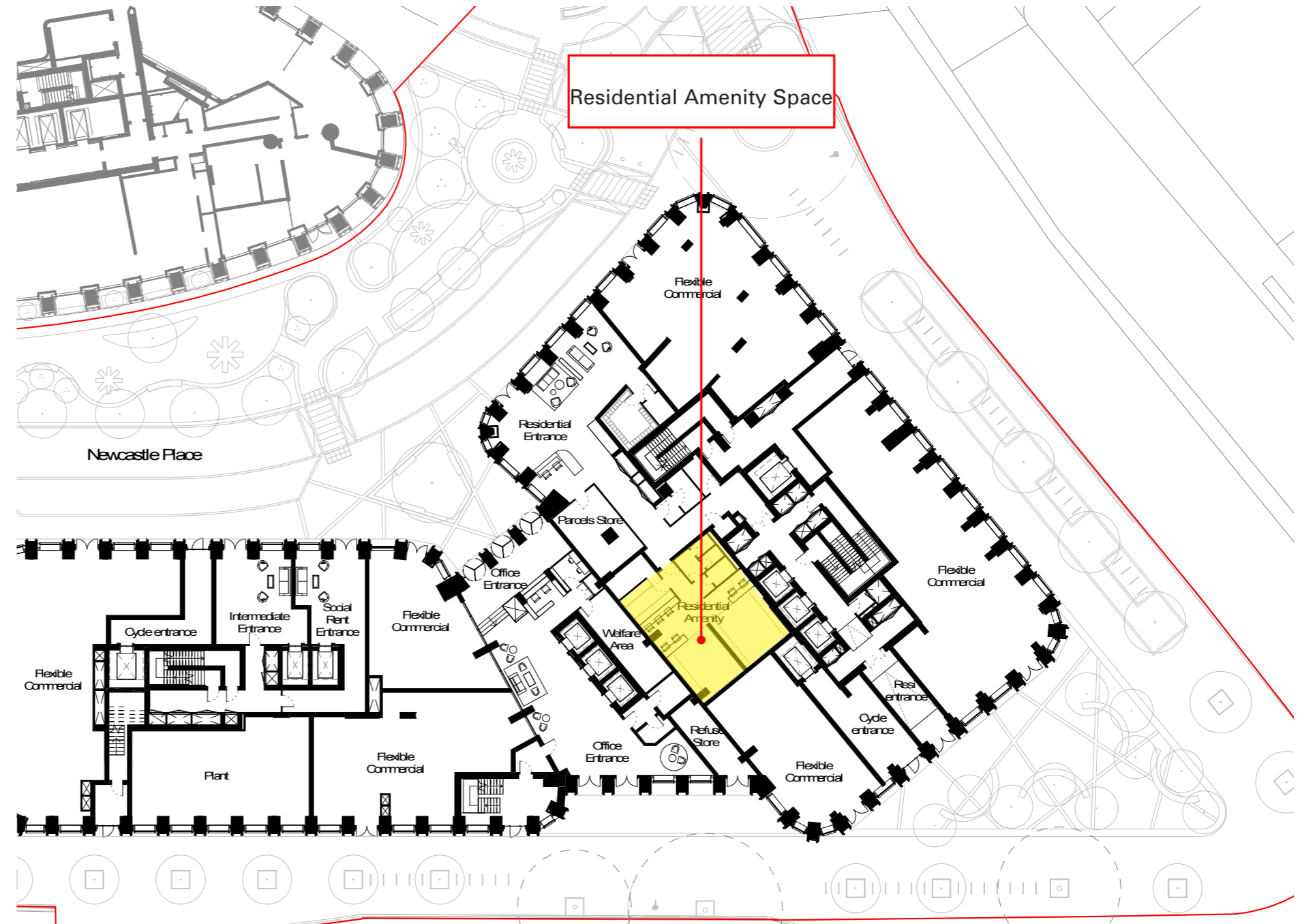


Figure 4.1 - Residential Amenity Space Location



Figure 4.2 - Examples of Domestic Style Waste Containers/Bins