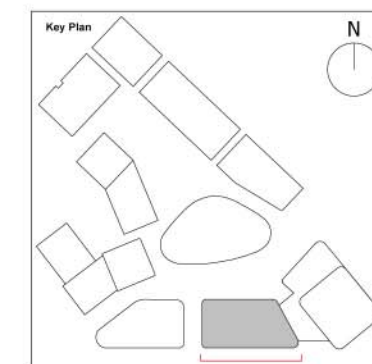
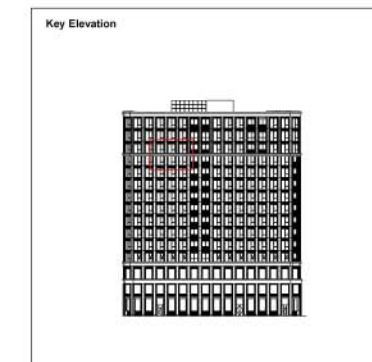


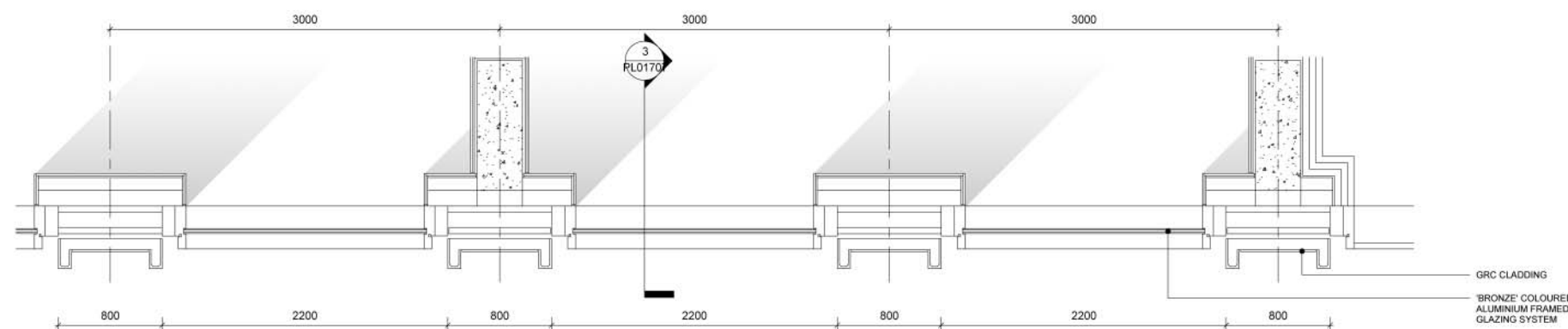
Do not scale from this drawing. All dimensions to be checked on site. All omissions and discrepancies to be reported to the Architect immediately

This work is copyright and shall not be reproduced or used for any other purpose without the written permission of Squire and Partners



1 Block J - Bay Study 04 - Elevation
1:25

3 Block J - Bay Study 04 - Section
1:25



2 Block J - Bay Study 04 - Plan
1:25

Issued for Planning	26/03/21	P1
Description	Date	Chk Rev

SQUIRE & PARTNERS

Squire and Partners LLP
The Department Store
248 Ferndale Road, London SW9 8FR
T: 020 7278 5555
info@squireandpartners.com
www.squireandpartners.com

Project
Paddington Green Police Station

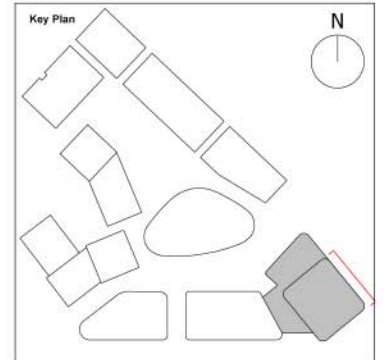
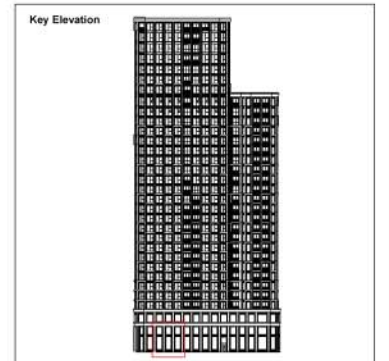
Title
Proposed Elevation
Block J
Typical Bay Study 04

Suitability Status
S2 For Information

Date	Scale @ ISO A1	Job Number
26.03.21	1:25	15044
Drawing Number	Revision	
15044-SQP-ZZ-ZZ-DB-A-PL01707	P1	

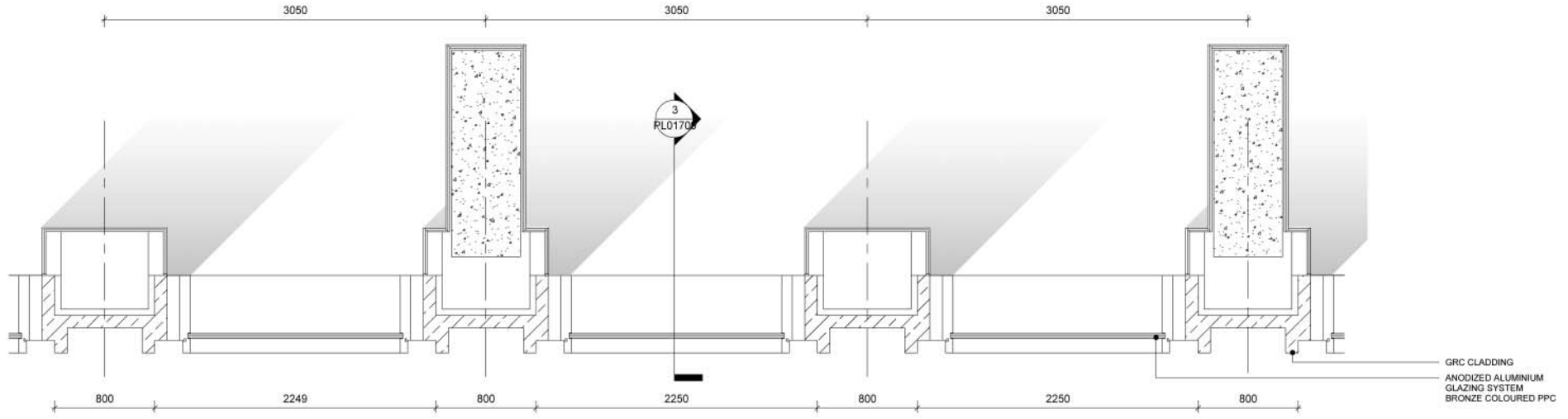
Do not scale from this drawing. All dimensions to be checked on site. All omissions and discrepancies to be reported to the Architect immediately

This work is copyright and shall not be reproduced or used for any other purpose without the written permission of Squire and Partners.



1 Block K - Bay study 01 - Elevation
1:25

3 Block K - Bay study 01 - Section
1:25



2 Block K - Bay study 01 - Plan
1:25

Issued for Planning	25/03/21	P1
Description	Date	Chk Rev

SQUIRE & PARTNERS

Squire and Partners LLP
The Department Store
248 Ferndale Road, London SW9 8FR
T: 020 7278 5555
info@squireandpartners.com
www.squireandpartners.com

Project
Paddington Green Police Station

Title
Proposed Elevation
Block K
Typical Bay Study 01

Suitability Status
S2 For Information

Date Scale @ ISO A1 Job Number
26.03.21 1:25 15044

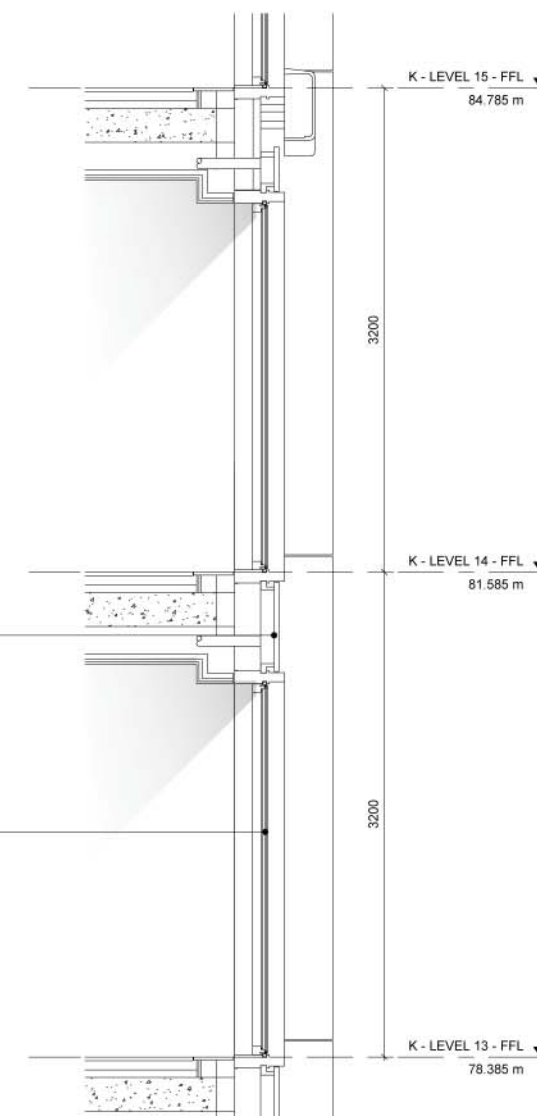
Drawing Number Revision
15044-SQP-ZZ-ZZ-DB-A-PL01709 P1

Do not scale from this drawing. All dimensions to be checked on site. All omissions and discrepancies to be reported to the Architect immediately

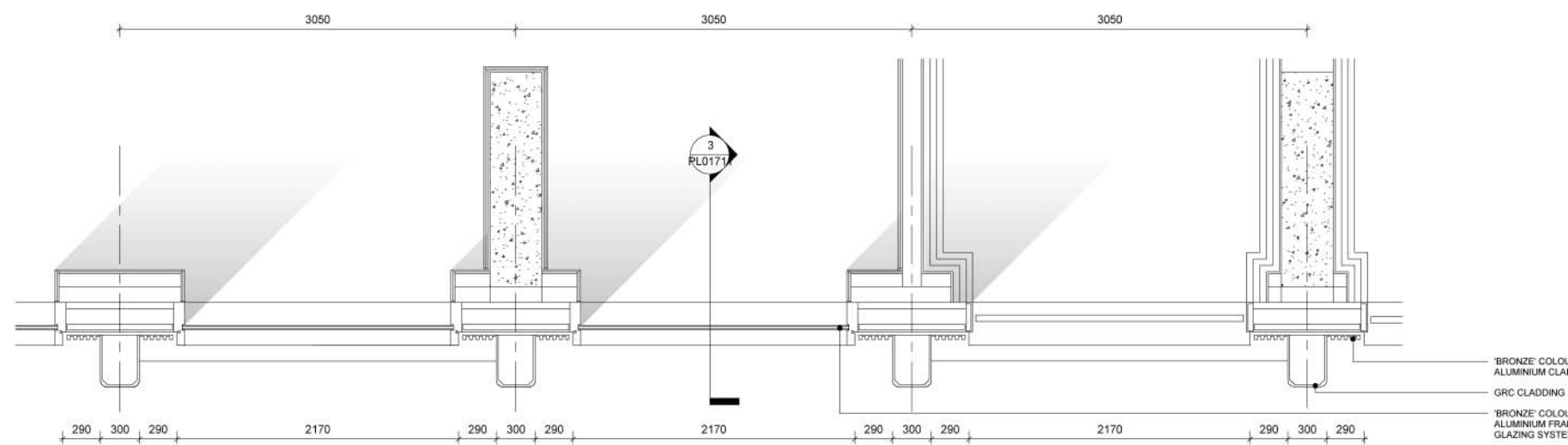
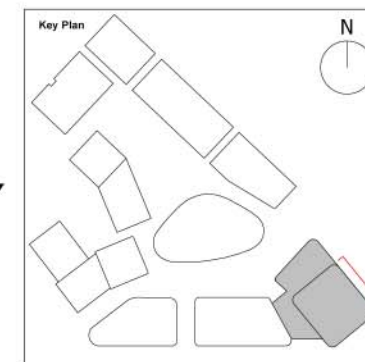
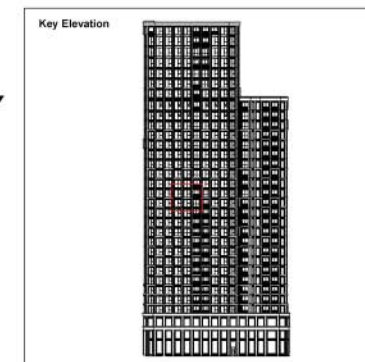
This work is copyright and shall not be reproduced or used for any other purpose without the written permission of Squire and Partners



1 Block K - Bay study 03 - Elevation
1:25



3 Block K - Bay study 03 -Section
1:25



2 Block K - Bay study 03 - Plan
1:25

Issued for Planning	26/03/21	P1
Description	Date	Chk Rev

SQUIRE & PARTNERS

Squire and Partners LLP
The Department Store
248 Ferndale Road, London SW9 8FR
T: 020 7278 5555
info@squireandpartners.com
www.squireandpartners.com

Project
Paddington Green Police Station

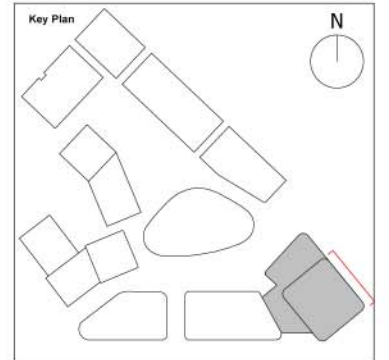
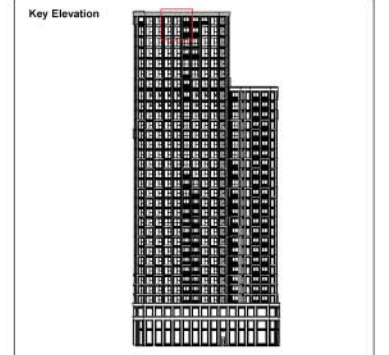
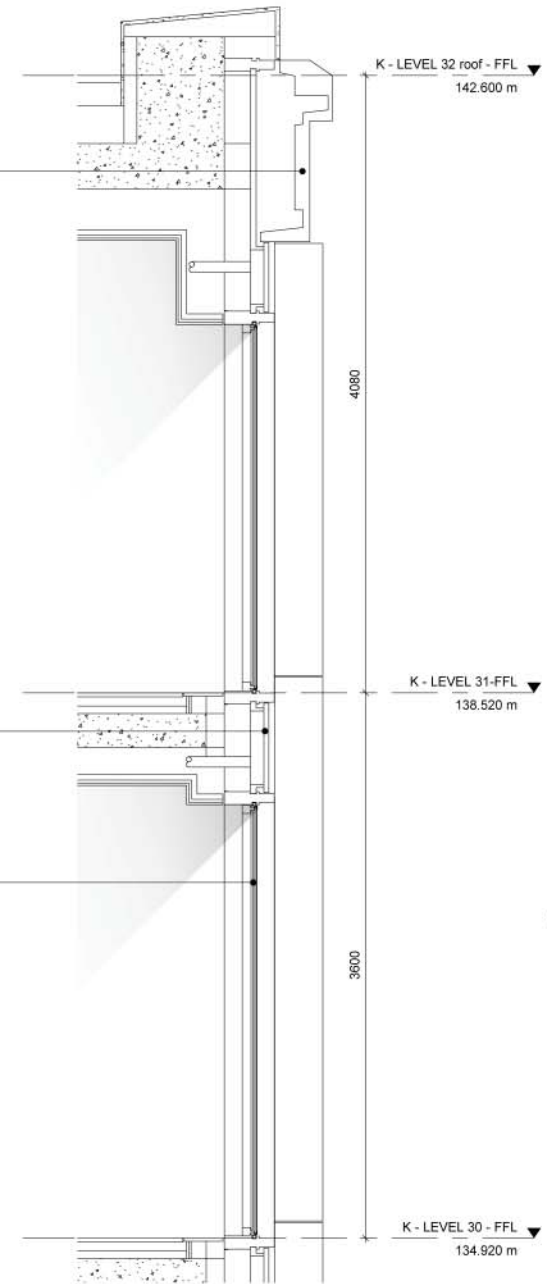
Title
Proposed Elevation
Block K
Typical Bay Study 03

Suitability Status
S2 For Information

Date	Scale @ ISO A1	Job Number
26.03.21	1:25	15044
Drawing Number	Revision	
15044-SQP-ZZ-ZZ-DB-A-PL01711	P1	

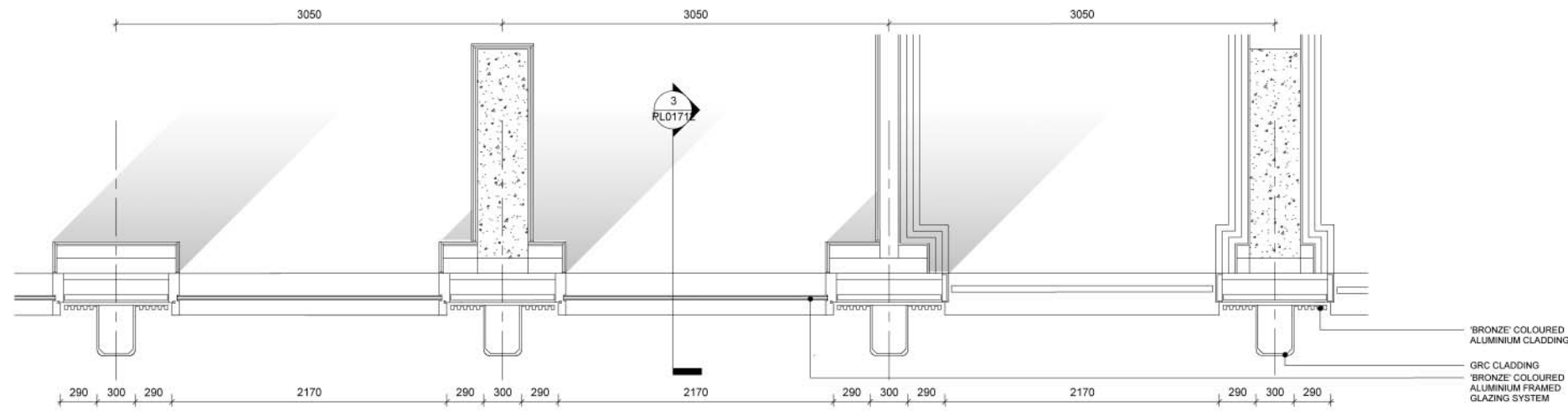
Do not scale from this drawing. All dimensions to be checked on site. All omissions and discrepancies to be reported to the Architect immediately

This work is copyright and shall not be reproduced or used for any other purpose without the written permission of Squire and Partners.



1 Block K - Bay study 04 - Elevation
1:25

3 Block K - Bay study 04 - Section
1:25



2 Block K - Bay study 04 - Plan
1:25

Issued for Planning	26/03/21	P1
Description	Date	Chk Rev

SQUIRE & PARTNERS

Squire and Partners LLP
The Department Store
248 Ferndale Road, London SW9 8FR
T: 020 7278 5555
info@squireandpartners.com
www.squireandpartners.com

Project
Paddington Green Police Station

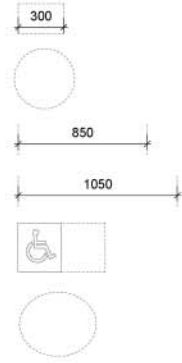
Title
Proposed Elevation
Block K
Typical Bay Study 04

Suitability Status
S2 For Information

Date	Scale @ ISO A1	Job Number
26.03.21	1:25	15044
Drawing Number	Revision	
15044-SQP-ZZ-ZZ-DB-A-PL01712	P1	

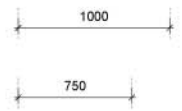
Part M(3) Space Requirements for Wheelchair User Dwellings:

General:



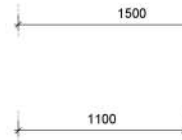
- Mn. 300mm nib provided to the leading edge of doors, 200mm to following edge
- Mn. 1500mm clear turning circle inside entrance, in front of door when closed
- Mn. 850mm door clear opening width
- Mn. 1050mm clear hallway width, or 1200mm when approach to door is not head on
- Mn. 1100mm x 1700mm wide space must be allocated for wheelchair transfer / storage
- Mn. 1500mm x 1800mm turning ellipse to kitchen

Bedrooms:



- Principle double bedroom to provide 1000mm wide clear access zone to both sides and foot of the bed and 1200mm x 1200mm manoeuvring space to either side of the bed
- Every bedroom to provide a clear 750mm access route from door to the window, along with a 1200mm x 1200mm manoeuvring space.

Accessible Bathrooms:



- Provide a 1500mm clear turning circle
- Accessible bathroom door to open out
- Provide clear area of 1100mm in front of WC, and 1000mm to the side

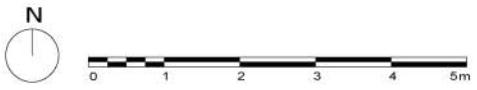
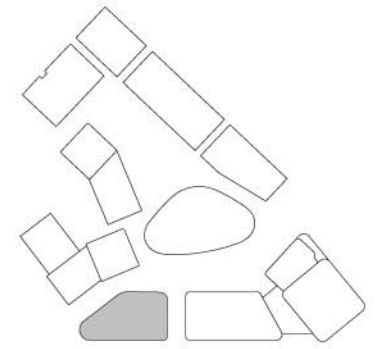
Private Outdoor Space



- 1500mm minimum clear width

Do not scale from this drawing. All dimensions to be checked on site. All omissions and discrepancies to be reported to the Architect immediately

This work is copyright and shall not be reproduced or used for any other purpose without the written permission of Squire and Partners.



Issued for Planning	26/03/21	P1
Description	Date	OK Rev

SQUIRE & PARTNERS

Squire and Partners LLP
The Department Store
248 Finsbury Road, London, E2 8ER
T: 020 7278 5555

info@squireandpartners.com
www.squireandpartners.com

Project
Paddington Green Police Station
London, W2

Title
Block 1 - Wheelchair accessible Typical 02
Level 00
Apartment 1.0.02

Suitability Status
S2 For Information

Date Scale @ ISO A1 Job Number
As indicated 15044

Drawing Number Revision
15044-SQP-01-00-DP-A-FL01201 P1