

1.3 Focal points and views

1.4.1 Established trees & avenue of hornbeams

Up-lighting co-ordinated with landscape architect proposals

1.4.2 Arrival water feature /piazza with seating

Lighting to illuminate water sculpture. Detail to be coordinated with sculpture specification. Low level lighting to benches and benches specification to be coordinated with the landscape architect.

1.4.3 Harrow Road to Newcastle Place Pedestrian link

A linear avenue of planting signposts a through-route from Harrow road to Newcastle place. This planting and pathway will be illuminated by accent lighting within the granite setts in line with landscape architects proposals.

1.4.4 Focal Artwork

The junction of Edgware Road will be regenerated to expand the high quality landscaping on the corner of Edgware and Harrow Road. An illuminated Artwork will serve as a focal point to the plaza.

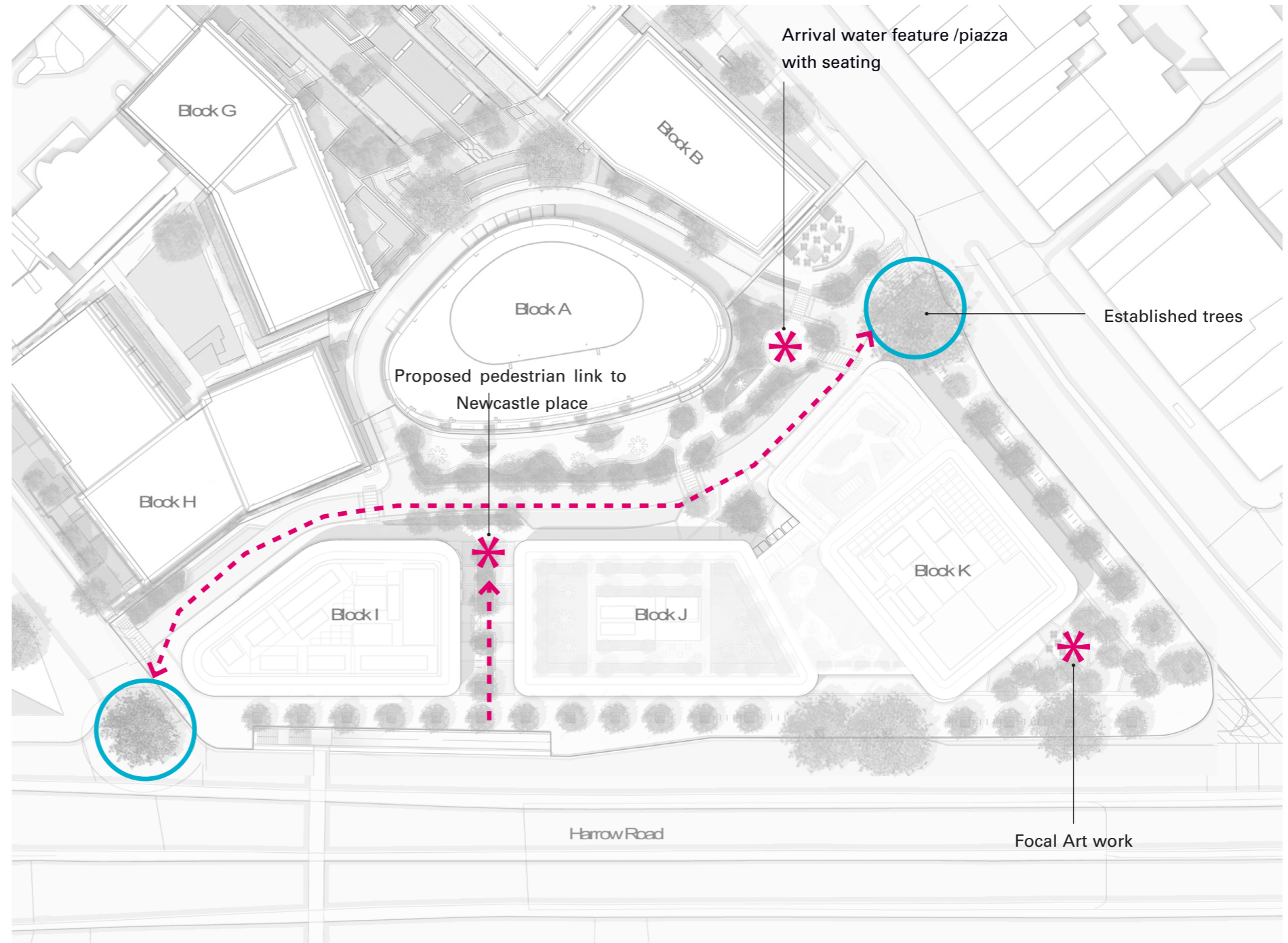
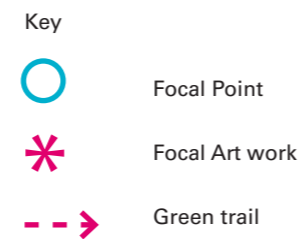


Figure 1.3 Focal Edges and Focal Points from Murdoch Wickham landscape proposals



1.4 Exterior landscape lighting

1.5.1 Mood board

- Focal point to road entrance for navigation [Fig 1.4]
- Street lighting to road & pavement [Fig 1.5]
- Low level lighting to trees & furniture [Fig 1.6]
- Accent lighting to bosque & planters [Fig 1.7 & Fig 1.8]
- Lighting to art/sculpture [Fig 1.9]
- Diffuse lighting to building entrances [Fig 1.10]
- Path lighting to guide perambulation [Fig 1.11]



Figure 1.4



Figure 1.5



Figure 1.6



Figure 1.7



Figure 1.8

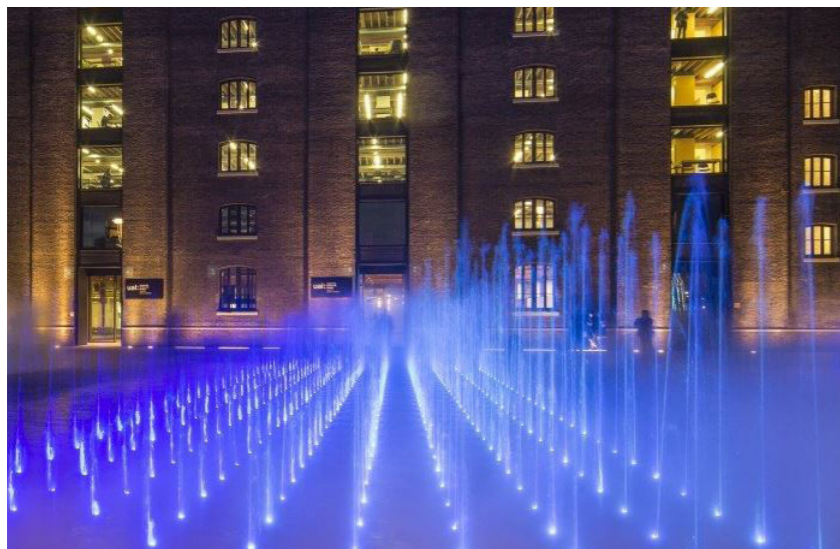


Figure 1.9



Figure 1.10



Figure 1.11

2.0 Roof Gardens

2.1 Private Residential Gardens

Residents roof gardens are proposed to both Block J and Block K. These amenity spaces will have a low light level and low glare lighting to ensure resident privacy.

Short poles or bollards will illuminate pathways. With accent lighting provided to greenery and under lighting to seating in line with landscape architects proposals.

2.2 Biodiverse roof (restricted access)

Accent lighting provided to greenery

2.3 Office terraces

Ambient lighting provided through the office facade.

Recessed floor wash light proposed to direct light to the terrace deck. The light requires a 50mm diameter cut-out. Lighting will be discrete and avoid glare when viewing from all directions.



*Floor recessed luminaire
 Manufacturer: Lucelight
 Product: Rondò 1.1
 Dimensions: D: 100mm W: 26mm*

Figure 2.1

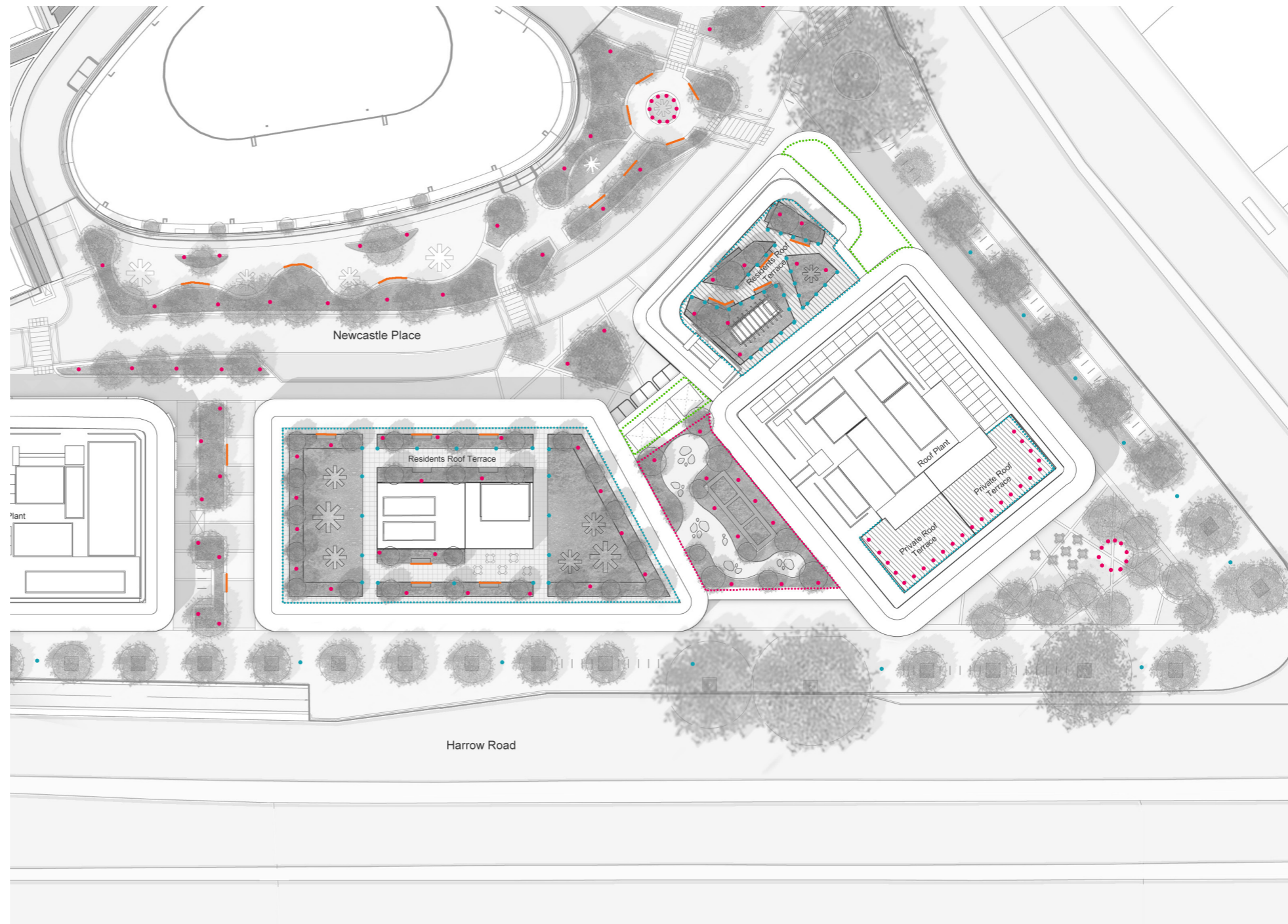


Figure 2.2 Roof garden lighting strategy

Key

- Extent of residents roof garden
- Extent of biodiverse roof scape
- Extent of Office terrace
- Strip lighting to seating
- Accent lighting
- Pathway lighting