

Part M(3) Space Requirements for Wheelchair User Dwellings:

General:

300



Min. 300mm nib provided to the leading edge of doors, 200mm to following edge

850

1050



Min. 1500mm clear turning circle inside entrance, in front of door when closed

Min. 850mm door clear opening width

Min. 1050mm clear hallway width, or 1200mm when approach to door is not head on

Min. 1100mm x 1700mm wide space must be allocated for wheelchair transfer / storage

Min. 1500mm x 1800mm turning ellipse to kitchen

Bedrooms:

1000

Principle double bedroom to provide 1000mm wide clear access zone to both sides and foot of the bed and 1200mm x1200mm manoeuvring space to either side of the bed

750

Every bedroom to provide a clear 750mm access route from door to the window, along with a 1200mm x 1200mm manoeuvring space.

Accessible Bathrooms:

1500

Provide a 1500mm clear turning circle

Accessible bathroom door to open out

1100

Provide clear area of 1100mm in front of WC, and 1000mm to the side

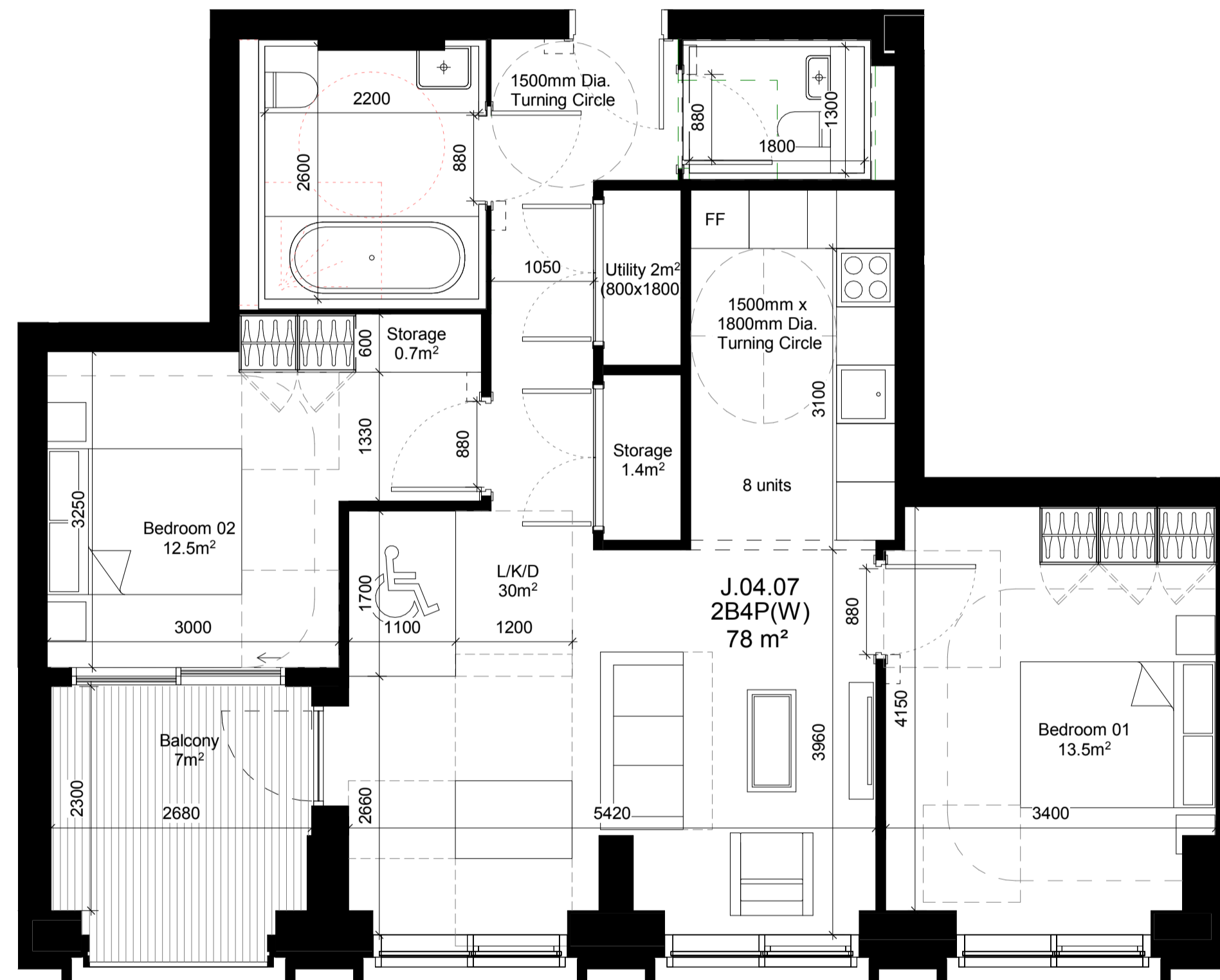
Private Outdoor Space

1500

1500mm minimum clear width

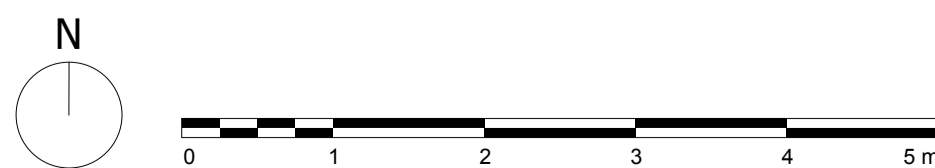
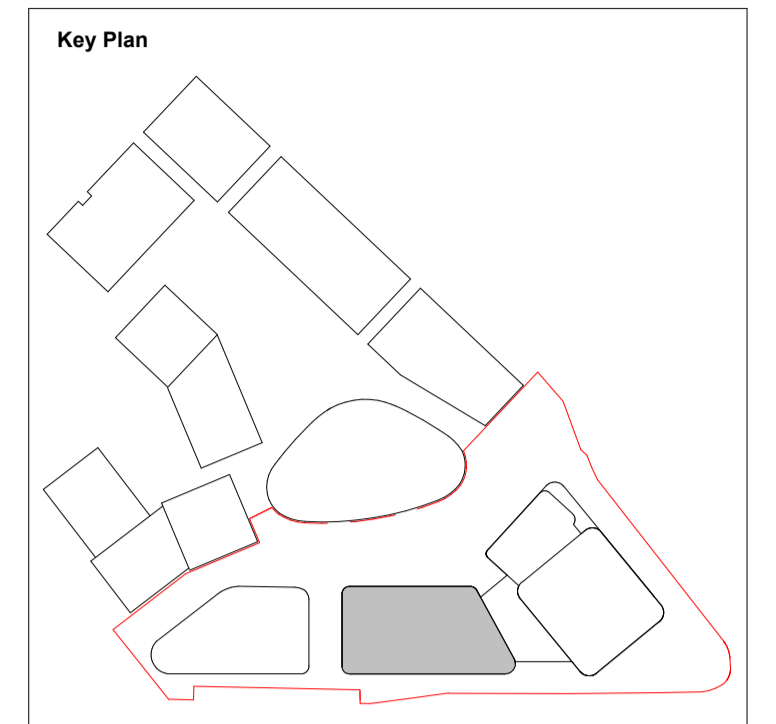
Note:

Typical Apartment applies to levels 3-10 (8no. total)



Do not scale from this drawing. All dimensions to be checked on site. All omissions and discrepancies to be reported to the Architect immediately

This work is copyright and shall not be reproduced or used for any other purpose without the written permission of Squire and Partners.



Issued for Planning	26/03/21	P1
Description	Date	Chk Rev

SQUIRE & PARTNERS

Squire and Partners LLP
The Department Store
248 Ferndale Road, London SW9 8FR
T: 020 7278 5555

info@squireandpartners.com
www.squireandpartners.com

Project
Paddington Green Police Station
London, W2

Title
Block J - Wheelchair accessible Typical 01
Levels 03-10
Apartment J.04.07

Suitability Status
S2 For Information

Date Scale @ ISO A1 Job Number
26.03.21 1:50 15044

Drawing Number Revision
15044-SQP-02-ZZ-DP-A-PL01204 P1