

### 3.0 Management of operational waste - Residential

#### 3.1 Introduction

This section outlines the strategy which will be adopted to manage the residential waste arising from the Proposed Development once operational.

#### 3.2 Waste generation metrics

Estimated residential waste generation levels from the Proposed Development have been quantified based on weekly waste generation metrics sourced from WCC's planning guidance 'Recycling and Waste Storage Requirements' dated 2015-2016 (hereafter referred to as 'the Guidance').

##### 3.2.1 WCC waste generation metrics:

- Dry recycling 60L (20L paper, 20L glass, 20L other) per bedroom
- General waste 30L per bedroom
- Food waste 10L per bedroom.

The Proposed Development will be provided with three waste storage areas at basement level which are located in close proximity to the service cores of the apartment buildings. These waste storage areas will be used by the residents within each of the apartment blocks.

Commercial bin storage will be separated from the residential stores and labelled as such.

Based on the waste generation metrics in paragraph 3.2.1, Table 3.1 outlines the estimated residential waste arising per block/waste store.

#### 3.3 Proposed waste management strategy - General

##### 3.3.1 Commercial waste generation and storage

Daily collection assumed with waste store sized to store two days' waste (to account for missed collection).

- Waste store area: 55.05 m<sup>2</sup>

##### 3.3.2 Residential waste generation and storage

Weekly collection assumed as per WCC guidance with waste store sized to store seven day's waste.

- Waste store area: 269.80 m<sup>2</sup>

#### 3.4 Individual residential properties

Each residential property will be provided with a segregated waste bin, which will be fixed into an appropriate kitchen unit.

The segregated waste bin will contain sufficient individual receptacles to allow the segregation of the waste in accordance with the Guidance.

##### 3.4.1 An example of a suitable segregated waste bin is shown in figure 3.2.



Figure 3.2 Segregated Waste Bin

The segregated waste bin shown in Figure 3.2 includes the following bin capacities:

- Recyclables: 30 litres; and
- Refuse: 19 litres.

The proposed segregated waste bin will be fitted into a single kitchen unit with a minimum width of 500mm.

In addition, WCC will provide a suitable food waste caddy for the collection and storage of food waste once this service has been implemented.

#### 3.5 Proposed Block-specific waste strategies

Each of the following sections outlines the waste management strategy for the waste storage areas located in Blocks I, J and K.

Figure 3.3 shows the location of block-specific waste storage areas provided within the Proposed Development at basement level.

#### Residential Refuse and Recycling

##### Total storage capacity required (litres)

		General Waste 30LxB	Food Waste 10LxB	Recycling 60LxB	
<b>Block K</b>					
Studio	32	960	320	1,920	
1 beds	83	2,490	830	4,980	
2 beds	77	4,620	1,540	9,240	
3 beds	91	8,190	2,730	16,380	
4 beds	6	720	240	1,440	
<b>TOTAL</b>		<b>16,980</b>	<b>5,660</b>	<b>33,960</b>	<b>56,600</b>
<b>Block J</b>					
1 beds	19	570	190	1,140	
2 beds	56	3,360	1,120	6,720	
3 beds	34	3,060	1,020	6,120	
4 beds	1	120	40	240	
<b>TOTAL</b>		<b>7,110</b>	<b>2,370</b>	<b>14,220</b>	<b>23,700</b>
<b>Block I</b>					
1 beds	95	2,850	950	5,700	
2 beds	54	3,240	1,080	6,480	
3 beds	7	630	210	1,260	
4 beds	1	120	40	240	
<b>TOTAL</b>		<b>6,840</b>	<b>2,280</b>	<b>13,680</b>	<b>22,800</b>
<b>TOTAL</b>					<b>103,100</b>

Figure 3.1 - Estimated Residential Waste

3.5.1 Blocks I, J and K

It is proposed that waste storage areas will be provided at basement level (refer to Figure 3.3) in close proximity to each of the service cores. These waste storage areas will be the location that all residential refuse, recyclable and food waste generated from the individual blocks will be stored prior to collection. Bins will be labelled R (for recycling), O (for food waste) and W (for general waste).

Based on the Guidance and the estimated waste arising summarised in the table at Figure 3.1 at the previous page, Figure 3.4 outlines the number and types of bins that will be required to service each of the Blocks assuming a weekly waste collection frequency.

It is proposed that each of the block-specific waste storage areas will have sufficient space to accommodate the numbers of bins shown in Figure 3.4.

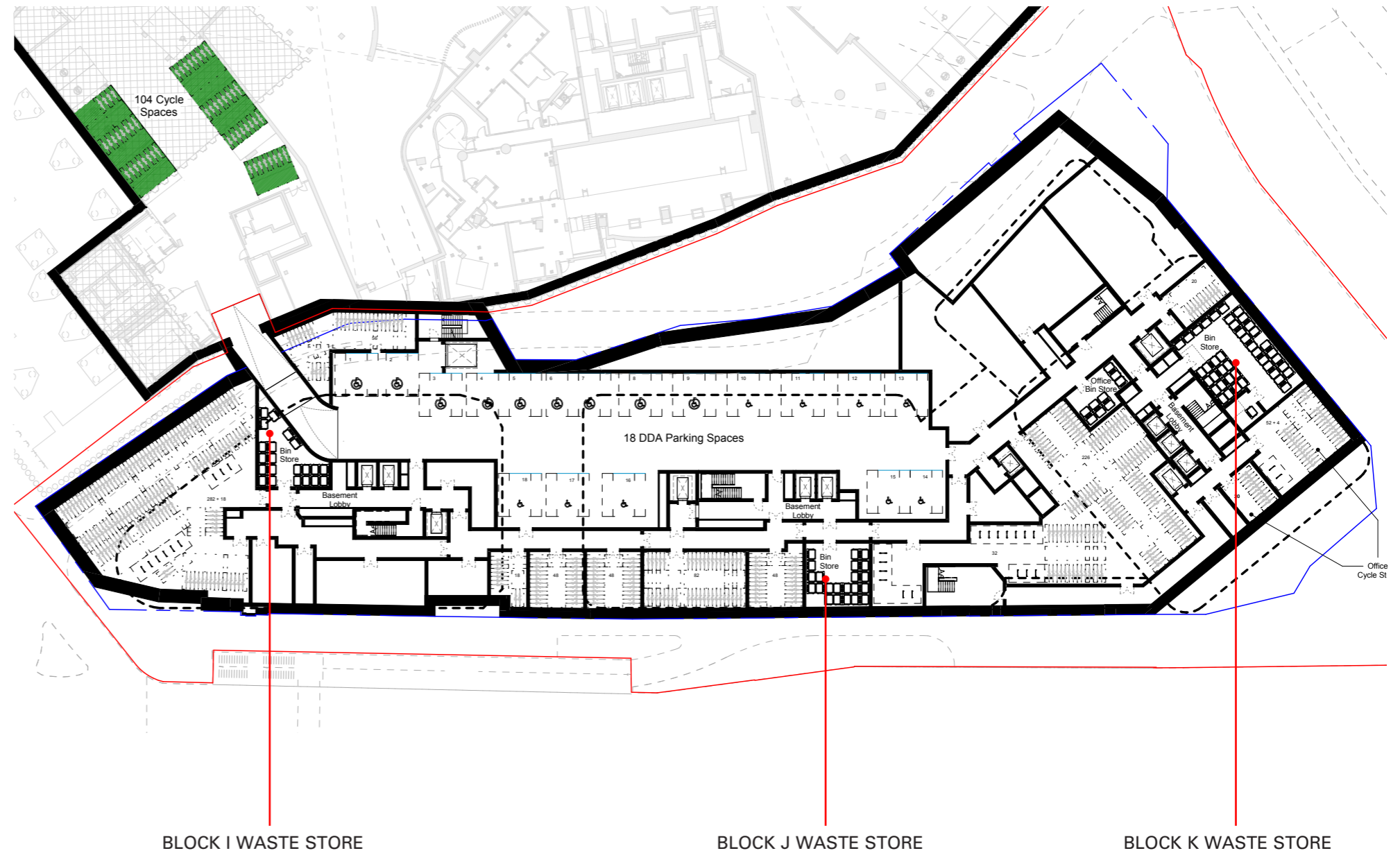


Figure 3.3 - Location of Resi Waste Storage Areas

	Waste generation per week (L)	1100L Euro bin
<b>Block J</b>		
General Waste	7,110	6
Food Waste	2,370	2
Recycling	14,220	13
<b>TOTAL</b>		<b>22</b>
<b>Block I</b>		
General Waste	6,840	6
Food Waste	2,280	2
Recycling	13,680	12
<b>TOTAL</b>		<b>21</b>

\*Note: Eurobins are 1260x980x1370 (wxdxh)

Figure 3.4 - Estimated Waste Generation and Bin Requirements